

SK350_{LC}
SK350LC-11E

KOBELCO

Performance  Design

SK350_{LC}

- Bucket capacity:
1.20 – 1.80 m³
- Engine power:
210 kW / 1,900 min⁻¹
- Operating weight:
37,000 kg




Note: This catalogue may contain attachments and optional equipment that are not available in your area. And it may contain photographs of machines with specifications that differ from those of machines sold in your areas. Please consult your nearest KOBELCO distributor for those items you require. Specialist equipment is needed to use this machine in demolition work. Before using it please contact your KOBELCO dealer. Due to our policy of continuous product improvements all designs and specifications are subject to change without advance notice. Copyright by **KOBELCO CONSTRUCTION MACHINERY CO., LTD.** No part of this catalogue may be reproduced in any manner without notice.

KOBELCO CONSTRUCTION MACHINERY CO., LTD.

5-15, Kitashinagawa 5-chome, Shinagawa-ku, Tokyo 141-8626 JAPAN
Tel: +81 (0) 3-5789-2146 Fax: +81 (0) 3-5789-2135
www.kobelcocm-global.com

Inquiries To:

Bulletin No. SK350LC-11E-TUR-101-2309E

 Complies with the EU Stage V
exhaust emission regulation

We Save You Fuel
Achieving a Low-Carbon Society



Performance Design

SK350LC of KOBELCO has realised a completely new value by harmonising PERFORMANCE – greater efficiency and productivity with an increased power and speed and DESIGN – operator-based operability and comfort, refusing to accept any compromises. In pursuit of unique and matchless machines which are unforgettable once you use them, KOBELCO will continue to rise to meet every challenge.

THE ULTIMATE IN SIMPLE AND ELEGANT DESIGN

Our pursuit of functional beauty and aesthetic sense produced a new interior design.

Jog dial

This jog dial integrates multiple functions to realise simple operations. Even with gloved hands, the operator can set various machine conditions without stress.

LED backlights

The switches and dials have LED backlights – they provide a bright, clear view in the dark and set a luxurious mood.



UNFORGETTABLE COMFORT

Air suspension seat

A GRAMMER* seat is installed as standard equipment, which achieves excellent shock absorption and superior ride comfort.

*GRAMMER is trademark of GRAMMER AG, registered in Germany and other countries.

Multi Vent Air Conditioner

Cool air is blown from multiple outlets toward the operator's body for more comfortable operation.

Ergonomic Lever Angles

Operators can move levers horizontally without twisting their wrists, reducing fatigue.



New Hydraulic Control

Our newly upgraded hydraulic control system responds to shorter lever strokes than previous models, delivering swifter, more precise movement and improved lever operability.

LED Interior Light

Interior lights turn on and off automatically when the door is open or the ignition is turned to the OFF position. This ensures safe entry and exit in the dark.

Parallel wipers secure a wide field of view





SAFETY ON FULL DISPLAY

Standard 3 Sides Safety Camera System

Our high-resolution, large display shows right, left and rear side cameras together. Multiple display allows the operator to customize viewing needs to enhance operator awareness and jobsite safety.



Large 10-Inch Color Monitor

The easy-to-operate menu screen and recognizable icons assist the operator to select the most important information needed to ensure jobsite safety and machine control.



Dial in the Right Information

Simply turn the jog dial to the right or left to select an operational feature, then press the dial to confirm selection.





Max. bucket digging force (Arm 3.30 m)

Normal: **222** kN

With power boost: **244** kN

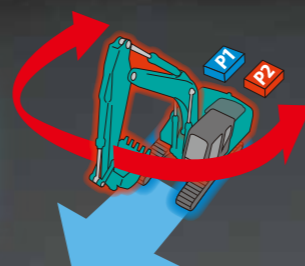
Lift capacity

18,060 kg

(Reach: 4.50 m Boom: 6.50 m Arm: 3.30 m Bucket: without Shoe: 600 mm <Heavy Lift> At Ground Level)

Independent Travel

Selecting Independent Travel dedicates one hydraulic pump to travel and one to the attachment on a continuous basis, allowing for a smooth and constant movement speed even while swinging or using the boom or attachment. With Independent Travel, safely carrying a large pipe across a job site is a breeze.



EXPERIENCING A COMPETENT PERFORMANCE

Excellent machine stability, plus an EU Stage V compliant engine

The new SK350LC is equipped with a Isuzu Stage V compliant engine, which has a higher torque value. Superior balance between engine output and torque contributes to more efficient performance than the previous models. In addition, the DPF replacement interval has been extended.

Model: ISUZU 6HK1

Engine output

210 kW / **1,900** min⁻¹



GREATER MULTI-FUNCTION CAPABILITIES

Attachment mode

The flow rate and working pressure modes of the bucket, breaker, nibbler, and rotating grapple are set before delivery, which allows you to start operating immediately. Mode settings for other attachments, such as the tilt rotator, can easily be added or changed.



EASY MAINTENANCE



Standard Overhead Top Guard Level II

The standard overhead cab guard can be tilted open with gas damper* for easy window cleaning. Meets standard top guard level II requirements. (ISO 10262)



Engine Maintenance

Lower service platform makes engine service easier.



Two-stage air filter



DEF/AdBlue® Tank

The DEF/AdBlue® fill is located inside the locking tool box.



Left side (radiator and cooling system elements)

Laid out for easy access to radiator and cooling system.



Right Side (Ground Level Maintenance)



1 Fuel Filter 2 Pre-Filter with Integrated Water Separator



3 Engine oil filter

Note: AdBlue® is a registered trademark of the Verband der Automobilindustrie e.V. (VDA).
*Gas damper is not applicable for 2 piece boom specification.

DURABILITY YOU CAN TRUST

Enhanced body rigidity for 35-ton class machines

The SK350LC machines are widely used in mid-scale construction projects and harsh worksites. The components have been reviewed and improvements have been made to their durability to ensure stable performance in such environments.



Panels and supports

The right and left side panels and rear supports have been thicker to enhance body rigidity.



Bucket cylinder rod pin

The increased diameter of the bucket cylinder rod pin contributes to enhanced durability for various types of attachments.

CONVENIENT AND SENSIBLE EQUIPMENT



Engine start password

A password is required when starting the engine for greater security. The initial password must be set at our workshop.



Wiper adjustment function

In addition to the intermittent wiper mode and continuous wiper mode, the one-time wiper mode was added.



Parallel wiper Sun screen (Option)



Console mount

The console-integrated seat allows for comfortable operation.



DAB+ radio (FM/AM & AUX & USB & Bluetooth® & hands-free telephone)

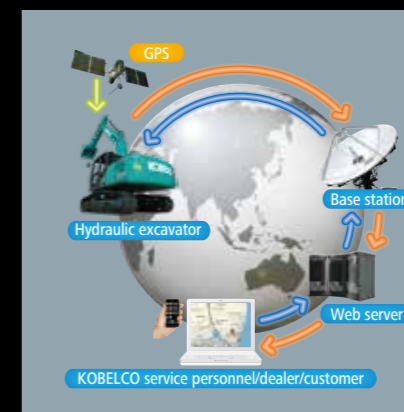


USB port/12V power outlet



Smartphone holder

You can use the holder with your smartphone connected to the USB port.



GEOSCAN

GEOSCAN

GEOSCAN allows you to use the Internet to manage information from your office for machines operating in all areas. This provides a wide range of support for your business operations.

Specifications



Engine

Model	ISUZU 6HK1
Type	Direct injection, water-cooled, 4-cycle diesel engine with turbocharger, intercooler complies with EU Stage V exhaust emission regulation
No. of cylinders	6
Bore and stroke	115 mm x 125 mm
Displacement	7.790 L
Rated power output	198 kW/1,900 min ⁻¹ (ISO 9249)
	210 kW/1,900 min ⁻¹ (ISO 14396)
Max. torque	1,011 N•m/1,500 min ⁻¹ (ISO 9249)
	1,080 N•m/1,500 min ⁻¹ (ISO 14396)



Hydraulic System

Pump	
Type	Axial piston pumps + extra gear pump + pilot gear pump
Max. discharge flow	2 x 294 L/min, 1 x 44.3 L/min, 1 x 19 L/min
Relief valve setting	
Boom, arm and bucket	34.3 MPa {350 kgf/cm ² }
Power Boost	37.8 MPa {385 kgf/cm ² }
Travel circuit	35.8 MPa {365 kgf/cm ² }
Swing circuit	29.5 MPa {300 kgf/cm ² }
Control circuit	5.0 MPa {50 kgf/cm ² }
Pilot control pump	Gear type
Main control valve	8-spool
Oil cooler	Air cooled type



Swing System

Swing motor	One fixed displacement piston motor
Brake	Hydraulic; locking automatically when the swing control lever is in neutral position
Parking brake	Oil disc brake, hydraulic operated automatically
Swing speed	10.0 min ⁻¹
Swing torque	120 kN•m



Attachments

Backhoe bucket and combination

Use	Backhoe bucket					
	Normal digging			Light-duty		
Bucket capacity	ISO heaped	m ³	1.20	1.40	1.60	1.80
	With side cutter	mm	1,240	1,420	1,570	-
Opening width	Without side cutter	mm	1,110	1,300	1,450	1,680
	No. of teeth		4	5	5	5
Bucket weight		kg	930	1,070	1,140	1,200
Combination	2.60 m short arm		○	○	◎	△
	3.30 m standard arm		○	◎	△	×

◎ Standard ○ Recommended △ Loading only × Not recommended



Travel System

Travel motors	2 x axial-piston, two-step motors
Travel brakes	Hydraulic brake per motor
Parking brakes	Oil disc brake per motor
Travel shoes	48 each side
Travel speed	5.6/3.3 km/h
Drawbar pulling force	321 kN (ISO 7464)
Gradeability	70 % {35°}



Cab & Control

Cab	
All-weather, sound-suppressed steel cab mounted on the high suspension mounts filled with silicone oil and equipped with a heavy, insulated floor mat.	
Control	
Two hand levers and two foot pedals for travel	
Two hand levers for excavating and swing	
Electric rotary-type engine throttle	
Noise levels	
External	106 dB(A) (2000/14/EC)
Operator	73 dB(A) (ISO 6396)



Boom, Arm & Bucket

Boom cylinders	140 mm x 1,550 mm
Arm cylinder	170 mm x 1,788 mm
Bucket cylinder	150 mm x 1,193 mm



Refilling Capacities & Lubrications

Fuel tank	503 L
Cooling system	41.4 L
Engine oil	48.6 L
Travel reduction gear	2 x 8.0 L
Swing reduction gear	1 x 7.4 L
Hydraulic oil tank	245 L tank oil level 410 L hydraulic system
DEF/Urea tank	83 L



Working Ranges

Unit: mm

Boom	6.50 m	
	Arm	
	Short 2.60 m	Standard 3.30 m
Range		
a- Max. digging reach	10,610	11,260
b- Max. digging reach at ground level	10,400	11,060
c- Max. digging depth	6,860	7,560
d- Max. digging height	10,260	10,580
e- Max. dumping clearance	7,060	7,370
f- Min. dumping clearance	3,320	2,620
g- Max. vertical wall digging depth	5,840	6,610
h- Min. swing radius	4,460	4,310
i- Horizontal digging stroke at ground level	4,210	5,820
j- Digging depth for 2.4 m (8') flat bottom	6,670	7,400
Bucket capacity ISO heaped m ³	1.60	1.40

Digging Force (ISO 6015)

Unit: kN

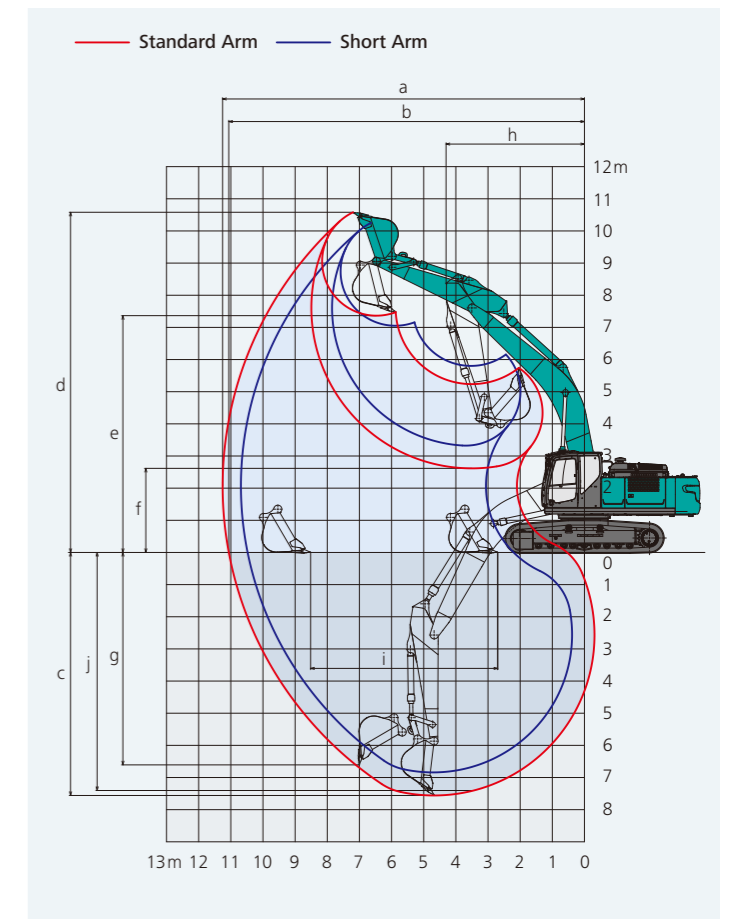
Arm length	Short 2.60 m	Standard 3.30 m
Bucket digging force	221 243*	222 244*
Arm crowding force	205 225*	163 180*

*Power Boost engaged.



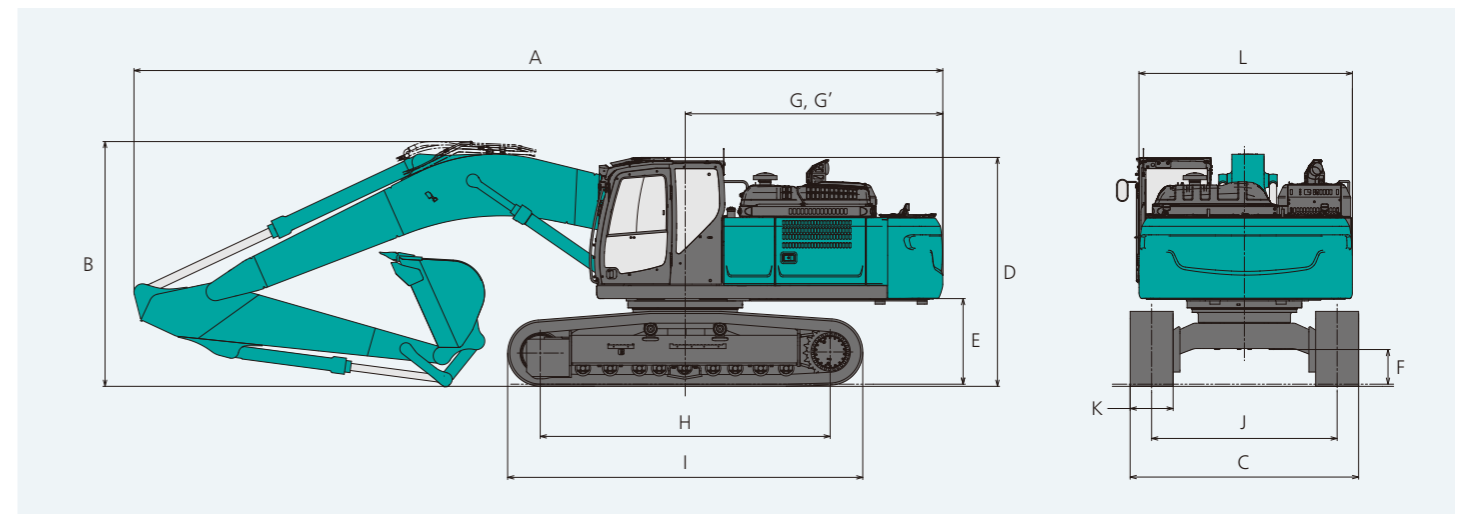
Dimensions

Arm length	Short 2.60 m	Standard 3.30 m
A Overall length	11,380	11,300
B Overall height (to top of boom)	3,690	3,420
C Overall width of crawler	3,190	
D Overall height (to top of cab)	3,200	
E Ground clearance of rear end*	1,190	
F Ground clearance*	485	



G Tail swing radius	3,600
G' Distance from centre of swing to rear end	3,600
H Tumbler distance	4,050
I Overall length of crawler	4,960
J Track gauge	2,590
K Shoe width	600
L Overall width of upperstructure	2,980

*Without including height of shoe

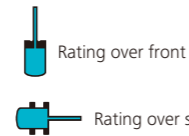
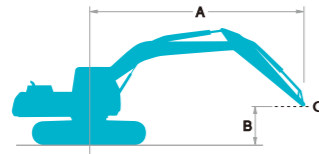


Operating weight & ground pressure

In standard trim, with standard boom, 3.30 m arm, and 1.40 m³ ISO heaped bucket

Shaped		Triple grouser shoes (even height)	
Shoe width	mm	600	
Overall width of crawler	mm	3,190	
Ground pressure	kPa	69	
Operating weight	kg	37,000	

Lift Capacities



A: Reach from swing centreline to arm top
 B: Arm top height above/below ground
 C: Lift point
 Bucket: Without bucket
 Relief valve setting: 37.8 MPa(385 kgf/cm²)

SK350LC		Boom: 6.50 m Arm: 3.30 m Bucket: without Shoe: 600 mm (Heavy Lift)															
B	A	1.5 m		3.0 m		4.5 m		6.0 m		7.5 m		9.0 m		At max. reach		Radius	
		Rating over front	Rating over side or 360 degrees	Rating over front	Rating over side or 360 degrees	Rating over front	Rating over side or 360 degrees	Rating over front	Rating over side or 360 degrees	Rating over front	Rating over side or 360 degrees	Rating over front	Rating over side or 360 degrees	Rating over front	Rating over side or 360 degrees		
9.0 m	kg														*6,370	*6,370	6.56 m
7.5 m	kg									*7,810	*7,810				*5,840	*5,840	7.86 m
6.0 m	kg									*7,930	*7,930				*5,640	*5,640	8.71 m
4.5 m	kg														*5,650	5,480	9.25 m
3.0 m	kg														*5,830	5,110	9.52 m
1.5 m	kg														*6,200	4,980	9.54 m
G.L.	kg														*6,830	5,070	9.33 m
-1.5 m	kg														*7,890	5,410	8.85 m
-3.0 m	kg	*17,520	*17,520	*22,280	*22,280	*16,380	13,810	*12,490	9,080	*9,690	7,040	8,400	5,430	*6,200	4,980	9.54 m	
-4.5 m	kg			*18,200	*18,200	*13,800	*13,800	*10,490	9,330						*8,540	7,810	6.88 m

SK350LC		Boom: 6.50 m Arm: 2.60 m Bucket: without Shoe: 600 mm (Heavy Lift)															
B	A	3.0 m		4.5 m		6.0 m		7.5 m		At max. reach		Radius					
		Rating over front	Rating over side or 360 degrees	Rating over front	Rating over side or 360 degrees	Rating over front	Rating over side or 360 degrees	Rating over front	Rating over side or 360 degrees	Rating over front	Rating over side or 360 degrees						
7.5 m	kg														*8,760	8,640	7.06 m
6.0 m	kg														*9,360	*9,360	8.00 m
4.5 m	kg														*10,470	*10,470	8.58 m
3.0 m	kg														*9,030	7,510	8.58 m
1.5 m	kg														*12,800	9,350	8.89 m
G.L.	kg														*10,200	6,920	8.89 m
-1.5 m	kg														*8,480	5,460	8.89 m
-3.0 m	kg	*19,180	*19,180	*15,120	13,900	*11,730	9,140								*9,090	6,050	8.15 m
-4.5 m	kg	*14,570	*14,570	*11,740	*11,740										*9,110	7,120	7.29 m
	kg														*8,590	*8,590	5.95 m

- Notes:**
- Do not attempt to lift or hold any load that is greater than these lift capacities at their specified lift point radius and heights. Weight of all accessories must be deducted from the above lift capacities.
 - Lift capacities are based on machine standing on level, firm, and uniform ground. User must make allowance for job conditions such as soft or uneven ground, out of level conditions, side loads, sudden stopping of loads, hazardous conditions, experience of personnel, etc.
 - Arm top defined as lift point.
 - The above lift capacities are in compliance with ISO 10567. They do not exceed 87% of hydraulic lift capacity or 75% of tipping load. Lift capacities marked with an asterisk(*) are limited by hydraulic capacity rather than tipping load.
 - Operator should be fully acquainted with the Operator's and Maintenance Instructions before operating this machine. Rules for safe operation of equipment should be adhered to at all times.
 - Lift capacities apply to only machine as originally manufactured and normally equipped by KOBELCO CONSTRUCTION MACHINERY CO., LTD.

Standard and Optional Equipment



● =Std ○ =Opt — = N/A

Category	Description	SK350LC-11E	
ENGINE	ISUZU 6HK1 engine (EU Stage V compliant)	●	
	Exhaust DOC DPF SCR system	●	
	Alternator 24 V/90 A	●	
	Starter motor 24 V/5 kW	●	
	Batteries 2 x 12 V (140 Ah)	●	
	Fan suction type cooling system	●	
	Auto deceleration function	●	
	Auto Idle Stop (AIS)	●	
	HYDRAULIC SYSTEM	3 work modes H,S,Eco	●
		Power Boost (37.8 MPa (385 kgf/cm²))	●
Heavy lift mode		●	
Pressure release function		●	
Independent travel function		●	
Auto warm up system		●	
Proportional Hand Control (for EGN&B piping)		●	
Hydraulic oil VG46		●	
PIPING		EGN&B piping	●
		QH piping	●
CABIN	Air suspension seat with heating	●	
	10-inch colour monitor	●	
	LED door light	●	
	Air-conditioner	●	
	DAB+ radio (FM/AM & AUX & USB & Bluetooth® & hands-free telephone)	●	
	Harness for CAB four lights and CAB yellow flasher	●	
	Parallel wiper	●	
	12 V power supply	●	
	Sun screen	○	
	Rain visor	○	
LIGHTS	LED work lights ; 2 on Boom, 1 on upper frame, 2 on rear counterweight	●	
	LED work lights; 2 on Cab top front	○	
WORKING EQUIPMENT	Standard boom (6.50 m)	●	
	Standard HD arm (3.30 m) with rock guard	●	
	Short HD arm (2.60 m) with rock guard	○	
	OHK hook	●	
COUNTERWEIGHT	Semi heavier C/W (TTL 8,590 kg)	●	
UNDERCARRIAGE	600 mm steel shoe	●	
	Track guide (one per side)	●	
	Additional track guides (two additional per side)	○	
	Lower frame guard	●	
SAFETY	Engine emergency stop switch	●	
	Pump emergency mode (KPSS release switch)	●	
	Emergency accel dial	●	
	Emergency manual valve for lowering attachment	●	
	Over load alarm	●	
	Safety valve for boom & arm cylinder	●	
	ROPS compliant cab (ISO 12117-2:2008)	●	
	OPG Level II top guard (ISO 10262:1998)	●	
	OPG Level II front guard (ISO 10262:1998)	○	
	Eagle-eye view camera (Rear, Right, Left)	●	
Seatbelt indicator on display	●		
OTHERS	Travel alarm	○	
	Extended handrail	○	
	Tool box	●	
	Refuelling pump	●	
	Harness for engine room light	●	
	RAL color	○	
	GEOSCAN	●	

*The air conditioning system on this machine contains fluorinated greenhouse gas HFC-134a (GWP 1430). Quantity of gas 0.9 kg (CO₂ equivalent 1.3 t).
 Note: Bluetooth® is a registered trademark of the Bluetooth SIG Inc.