

SK300_{LC}
SK300LC-11E

KOBELCO

Performance  Design

SK300_{LC}

- Bucket capacity:
0.60 – 1.40 m³
- Engine power:
210 kW / 1,900 min⁻¹
- Operating weight:
31,300 – 32,400 kg




Note: This catalogue may contain attachments and optional equipment that are not available in your area. And it may contain photographs of machines with specifications that differ from those of machines sold in your areas. Please consult your nearest KOBELCO distributor for those items you require. Specialist equipment is needed to use this machine in demolition work. Before using it please contact your KOBELCO dealer. Due to our policy of continuous product improvements all designs and specifications are subject to change without advance notice. Copyright by **KOBELCO CONSTRUCTION MACHINERY CO., LTD.** No part of this catalogue may be reproduced in any manner without notice.

KOBELCO CONSTRUCTION MACHINERY CO., LTD.

5-15, Kitashinagawa 5-chome, Shinagawa-ku, Tokyo 141-8626 JAPAN
Tel: +81 (0) 3-5789-2146 Fax: +81 (0) 3-5789-2135
www.kobelcocm-global.com

Inquiries To:

SK300LC-11E-TUR-101-2402XXEX

 Complies with the EU Stage V
exhaust emission regulation

We Save You Fuel
Achieving a Low-Carbon Society



Performance X Design

SK300LC of KOBELCO has realised a completely new value by harmonising PERFORMANCE and DESIGN.

Performance enhancements offer greater efficiency and productivity along with increased power and speed. Design improvements provide the ultimate in comfort and control.

KOBELCO refuses to compromise, creating machines that meet every challenge.

SK300LC

THE ULTIMATE IN SIMPLE DESIGN

In our pursuit of functional beauty and styling, we created an all new interior design focused with the operator in mind.

Jog Dial

This dial integrates multiple functions into a single, easy to use interface. Even with gloves on, the operator can make the adjustments they need.

LED Illumination

Dials and buttons are now backlit to provide a bright, clear view in any lighting condition.



UNFORGETTABLE COMFORT

Air suspension seat

A GRAMMER* seat is installed as standard equipment, which achieves excellent shock absorption and superior ride comfort.

*GRAMMER is trademark of GRAMMER AG. registered in Germany and other countries.

Multi Vent Air Conditioner

Cool air is blown from multiple outlets toward the operator's body for more comfortable operation.

Ergonomic Lever Angles

Operators can move levers horizontally without twisting their wrists, reducing fatigue.



New Hydraulic Control

Our newly upgraded hydraulic control system responds to shorter lever strokes than previous models, delivering swifter, more precise movement and improved lever operability.

LED Interior Light

Interior lights turn on and off automatically when the door is open or the ignition is turned to the OFF position. This ensures safe entry and exit in the dark.

Parallel wipers secure a wide field of view





SAFETY ON FULL DISPLAY

Standard 3 Sides Safety Camera System

Our high-resolution, large display shows right, left and rear side cameras together. Multiple display allows the operator to customize viewing needs to enhance operator awareness and jobsite safety.



Large 10-Inch Color Monitor

The easy-to-operate menu screen and recognizable icons assist the operator to select the most important information needed to ensure jobsite safety and machine control.



Dial in the Right Information

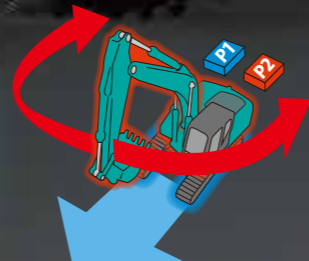
Simply turn the jog dial to the right or left to select an operational feature, then press the dial to confirm selection.





Independent Travel

Selecting Independent Travel dedicates one hydraulic pump to travel and one to the attachment on a continuous basis, allowing for a smooth and constant movement speed even while swinging or using the boom or attachment. With Independent Travel, safely carrying a large pipe across a job site is a breeze.



Max. bucket digging force (Arm 3.10 m)

Normal: **188** kN

With power boost: **208** kN

Lift capacity

16,150 kg

(Reach: 4.50 m Boom: 6.20 m Arm: 3.10 m Bucket: Without Counterweight: 5,540 kg Shoe: 600 mm <Heavy Lift> At Ground Level)

EXPERIENCING A COMPETENT PERFORMANCE

Excellent machine stability, plus a EU Stage V compliant engine

The new SK300LC is equipped with a Stage V compliant engine, which has a higher torque value. Superior balance between engine output and torque contributes to more efficient performance than the previous models. In addition, the DPF maintenance interval has been extended.

Model: ISUZU 6HK1

Engine output

210 kW/1,900 min⁻¹



GREATER MULTI-FUNCTION CAPABILITIES

Attachment mode selection

The auxiliary flow rates for the bucket, breaker, nibbler, and rotating are all now adjustable by the operator through the monitor, allowing you to change tools quickly and easily. Mode settings for other attachments like the tilt rotator can be added or changed.



EASY MAINTENANCE



Standard Overhead Top Guard Level II
The standard overhead cab guard can be tilted open with gas damper for easy window cleaning. Meets standard top guard level II requirements. (ISO 10262)



Engine Maintenance
Lower service platform makes engine service easier.



Two-stage air filter



DEF/AdBlue® Tank
The DEF/AdBlue® fill is located inside the locking tool box.



Left side (radiator and cooling system elements)
Laid out for easy access to radiator and cooling system.



Right Side (Ground Level Maintenance)
Hydraulic pump and engine filter compartment.



① Fuel Filter
② Pre-Filter with Integrated Water Separator



③ Engine oil filter

Note: AdBlue® is a registered trademark of the Verband der Automobilindustrie e.V. (VDA).

DURABILITY YOU CAN TRUST

Enhanced body rigidity for 30-ton class machines

The SK300LC machines are widely used in mid-scale construction projects and harsh worksites. The components have been reviewed and improvements have been made to their durability to ensure stable performance in such environments.



Panels and supports

The right and left side panels and rear supports have been thicker to enhance body rigidity.



Bucket cylinder rod pin

The increased diameter of the bucket cylinder rod pin contributes to enhanced durability for various types of attachments.

CONVENIENT AND SENSIBLE EQUIPMENT



Engine start password

A password is required when starting the engine for greater security.



Wiper adjustment function

In addition to the intermittent wiper mode and continuous wiper mode, the one-time wiper mode was added.



Parallel wiper

Sun screen (Option)



Console mount

The console-integrated seat allows for comfortable operation.



DAB+ radio (FM/AM & AUX & USB & Bluetooth® & hands-free telephone)



USB port/12V power outlet



Smartphone holder

You can use the holder with your smartphone connected to the USB port.

Excavator Remote Monitoring System

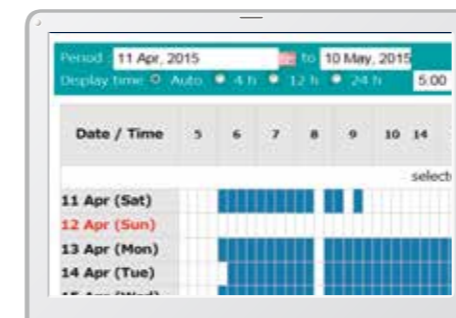


Remote Monitoring for Peace of Mind

GEO SCAN uses satellite communication and internet to relay data, and therefore can be deployed in areas where other forms of communication are difficult. When a hydraulic excavator is fitted with this system, data on the machine's operation, such as operating hours, location, fuel consumption, and maintenance status can be obtained remotely.

Operating Hours

- A comparison of operating times of machines at multiple locations shows which locations are busier and more profitable.
- Operating hours on site can be accurately recorded, for running time calculations needed for rental machines, etc.



Daily report

Fuel Consumption Data

- Data on fuel consumption and idling times can be used to indicate improvements in fuel consumption.

Work mode	Working Hrs	Total Fuel Consumption
H mode	2:06	24.5 L
S mode	0:00	0.0 L
E mode	169:19	1489.7 L
TOTAL	171:25	1514.2 L

Fuel consumption

Graph of Work Content

- The graph shows how working hours are divided among different operating categories, including digging, idling, travelling and optional operations.



Work status

Maintenance Data and Warning Alerts

Machine Maintenance Data

- Provides maintenance status of separate machines operating at multiple sites.
- Maintenance data is also relayed to KOBELCO service personnel, for more efficient planning of periodic servicing.

Model	Serial No.	Hour Meter	Engine Oil
SK135SRLC-3/SK140SR	YH07-09721	734 Hr	434
SK135SRLC-3/SK140SR	YH07-09789	73 Hr	429
SK210LC-9	YQ13-10454	960 Hr	58
SK210LC-9	YQ13-10481	549 Hr	498
SK75SR-	YT08-30174		

Maintenance

Warning Alerts

- This system gives an alert if an anomaly is sensed, preventing damage that could result in machine downtime.

Alarm Information Can Be Received via E-mail

- Alarm information or maintenance notice can be received via e-mail, using a computer or a mobile device.



Alarm messages can be received on a mobile device.

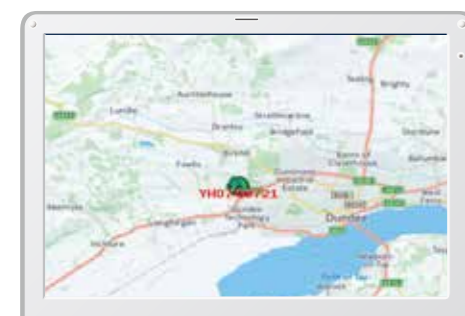
Daily/Monthly Reports

- Operational data downloaded onto a computer helps in formulating daily and monthly reports.

Direct Access to Operational Status

Location Data

- Accurate location data can be obtained even from sites where communications are difficult.



Latest location



Location records

Type of Operation	Working Hrs	Ratio
Total Working Hrs	169 Hrs	100 %
Digging Hrs	72.2 Hrs	43 %
Travelling Hrs	18.3 Hrs	11 %
Idle Hrs	15.9 Hrs	9 %
Opt Att Hrs	62.5 Hrs	37 %
Crane Mode Hrs	0 Hrs	0 %

Work data

Security System

Engine Start Alarm

- The system can be set up with an alarm if the machine is operated outside designated time.

Setting Condition Change
Start time: 20:00
Release time: 07:00

No Working Whole Day
Mon Tue Wed Thu Fri Sat Sun

Clear

Engine start alarm outside prescribed work time

Area Alarm

- It can be set up with an alarm if the machine is moved out of its designated area to another location.

Setting Condition
Around the current (latest) location: 1 Km
Input Latitude and Longitude
Latitude1
Longitude1
Latitude2
Longitude2
Map Clear
Release

Alarm for outside of reset area

Specifications

Engine

Model	ISUZU 6HK1
Type	Direct Injection, water-cooled, 4-cylinder diesel engine with turbocharger, intercooler complies with EU stage V exhaust emission regulation
No. of cylinders	6
Bore and stroke	115 mm × 125 mm
Displacement	7.790 L
Rated power output	198 kW /1,900 min ⁻¹ (ISO 9249: with fan)
	210 kW /1,900 min ⁻¹ (ISO 14396: without fan)
Max. torque	1,011 N·m /1,500 min ⁻¹ (ISO 9249: with fan)
	1,080 N·m /1,500 min ⁻¹ (ISO 14396: without fan)

Hydraulic system

Pump	
Type	Axial piston pumps + extra gear pump + pilot gear pump
Max. discharge flow	2 × 245 L/min, 1 × 44.3 L/min, 1 × 19 L/min
Relief valve setting	
Boom, arm and bucket	34.3 MPa (350 kgf/cm ²)
Power Boost	37.8 MPa (385 kgf/cm ²)
Travel circuit	34.3 MPa (350 kgf/cm ²)
Swing circuit	29.0 MPa (296 kgf/cm ²)
Control circuit	5.0 MPa (51 kgf/cm ²)
Pilot control pump	Gear type
Main control valve	8 - Spool valve
Oil cooler	Air cooled type

Swing system

Swing motor	One fixed displacement piston motor
Brake	Oil disc brake, hydraulic operated automatically
Parking brake	Wet multiple plate
Swing speed	10.2 min ⁻¹
Swing Torouque	101 kNm

Attachments

Backhoe bucket and combination

Use	Backhoe bucket					
	Normal digging					
Bucket capacity	ISO heaped	m ³	0.60	0.80	1.20	1.40
Opening width		mm	800	1,000	1,420	1,400
Bucket weight		kg	620	720	950	930
Combination	2.40 m short arm		○	○	○	○
	3.10 m standard arm		○	○	○	△
	4.00 m long arm		○	△	△	△

○ Standard ○ Recommended △ Loading only

Travel system

Travel motors	2 × axial-piston, two-step motors
Travel brakes	Hydraulic brake per motor
Parking brakes	Oil disc brake per motors
Travel shoes	50 each side
Travel speed	5.2/3.1 km/h
Drawbar pulling force	279 kN (SAE)
Gradeability	70 % (35°)

Cab & control

Cab
All-weather, sound-suppressed steel cab mounted on the silicon-sealed viscous mounts and equipped with a heavy, insulated floor mat

Control
Two hand levers and two pedals for travel
Two hand levers for excavating and swing
Electric rotary-type engine throttle

Noise levels	
External	106 dB(A) (2000/14/EC)
Operator	72 dB(A) (ISO 6396: 2008)
Vibration levels	
Hand/arm*	≤ 2.5 m/s ²
Body*	≤ 0.5 m/s ²

*For the risk assessment according to 2002/44/EC, refer to ISO/TR 25398: 2006.

Boom, arm & bucket

Boom cylinders	140 mm × 1,305 mm
Arm cylinder	150 mm × 1,675 mm
Bucket cylinder	130 mm × 1,208 mm

Refilling capacities & lubrications

Fuel tank	503L
Cooling system	41.4 L
Engine oil	48.6 L
Travel reduction gear	2 × 7.5 L
Swing reduction gear	1 × 7.4 L
Hydraulic oil tank	245 L tank oil level
	410 L hydraulic system
DEF/Urea tank	83 L

Working ranges

Unit: mm

Range	Arm	6.20 m		
		Short 2.40 m	Standard 3.10 m	Long 4.00 m
a- Max. digging reach		10,230	10,860	11,710
b- Max. digging reach at ground level		10,020	10,670	11,540
c- Max. digging depth		6,500	7,200	8,100
d- Max. digging height		9,740	10,010	10,430
e- Max. dumping clearance		6,830	7,110	7,530
f- Min. dumping clearance		3,270	2,560	1,660
g- Max. vertical wall digging depth		5,600	6,170	7,020
h- Min. swing radius		4,400	4,430	4,550
i- Horizontal digging stroke at ground level		3,990	5,580	7,090
j- Digging depth for 2.4m(8') flat bottom		6,310	7,040	7,970
Bucket capacity ISO heaped m ³		1.40	1.20	1.00

Digging Force (ISO 6015)

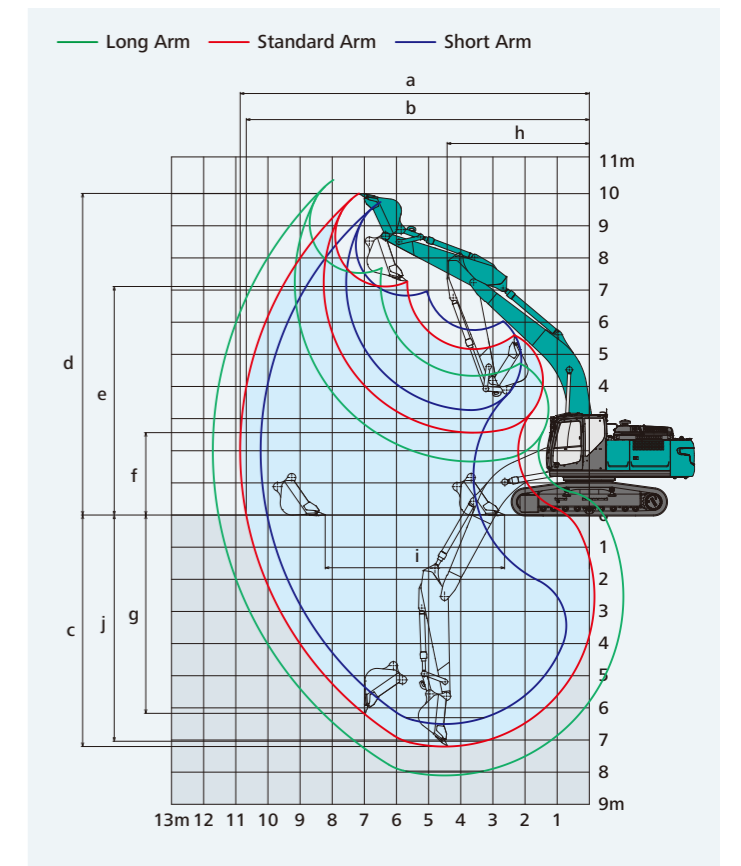
Unit: kN

Arm length	Short 2.40 m	Standard 3.10 m	Long 4.00 m
Bucket digging force	188 208*	188 208*	188 208*
Arm crowding force	158 174*	126 139*	105 115*

*Power Boost engaged.

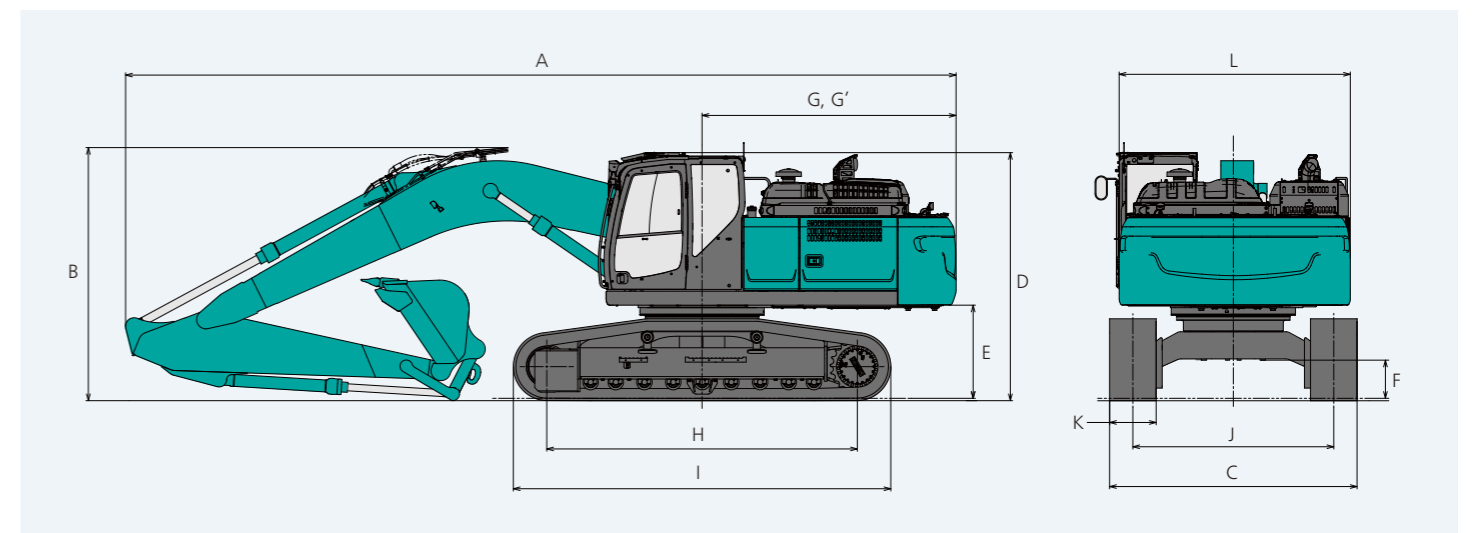
Dimensions

Arm length	Short 2.40 m	Standard 3.10 m	Long 4.00 m
A Overall length	10,830	10,710	10,770
B Overall height (to top of boom)	3,500	3,260	3,470
C Overall width of crawler	3,190		
D Overall height (to top of cab)	3,200		
E Ground clearance of rear end*	1,200		
F Ground clearance*	490		



Unit: mm	
G Tail swing radius	3,300
G' Distance from centre of swing to rear end	3,270
H Tumbler distance	4,000
I Overall length of crawler	4,870
J Track gauge	2,590
K Shoe width	600
L Overall width of upperstructure	2,980

*Without including height of shoe lug

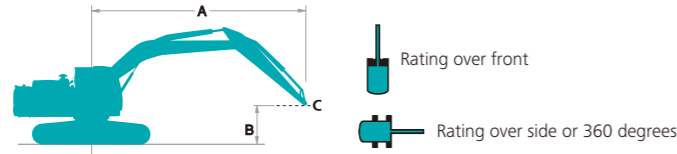


Operating weight & ground pressure

In standard trim, with standard boom, 3.10 m arm, and 1.20 m³ ISO heaped bucket, counterweight 5,540 kg

Shaped	Triple grouser shoes (even height)			
Shoe width	mm	600	700	800
Overall width of crawler	mm	3,190	3,290	3,390
Ground pressure	kPa	59	52	46
Operating weight	kg	31,300	31,900	32,400

Lift capacities



A - Reach from swing centerline to arm top
 B - Arm top height above/below ground
 C - Lift point
 Relief valve setting: 37.8 MPa (385 kgf/cm²)

SK300LC		Boom: 6.20 m Arm: 3.10 m Bucket: without Counterweight: 5,540kg Shoe: 600 mm (Heavy Lift)																			
B	A	1.5 m		3.0 m		4.5 m		6.0 m		7.5 m		9.0 m		At max. reach		Radius					
		7.5 m	kg														*4,280	*4,280	7.45m		
6.0 m	kg									*6,370	6,050				*4,070	*4,070	8.37m				
4.5 m	kg									*7,560	*7,560	*6,870	5,870		*4,030	*4,030	8.95m				
3.0 m	kg													*6,290	4,270	*4,120	4,090	9.24m			
1.5 m	kg															*4,370	3,980	9.28m			
G.L.	kg															*5,690	4,090	*4,800	4,050	9.06m	
-1.5 m	kg																				
-3.0 m	kg	*13,610	*13,610	*18,300	*18,300	*15,630	10,680	*11,640	7,020	8,430	5,230										
-4.5 m	kg																				

SK300LC		Boom: 6.20 m Arm: 4.00 m Bucket: without Counterweight: 5,540 kg Shoe: 600 mm (Heavy Lift)																				
B	A	1.5 m		3.0 m		4.5 m		6.0 m		7.5 m		9.0 m		At max. reach		Radius						
		9.0 m	kg																			
7.5 m	kg																					
6.0 m	kg																					
4.5 m	kg																					
3.0 m	kg																					
1.5 m	kg																					
G.L.	kg																					
-1.5 m	kg	*7,090	*7,090	*10,630	*10,630	*15,850	10,190	*11,400	6,720	8,140	4,930	6,260	3,840									
-3.0 m	kg	*10,790	*10,790	*15,010	*15,010	*15,790	10,180	11,340	6,670	8,110	4,910											
-4.5 m	kg	*15,200	*15,200	*21,200	20,950	*14,740	10,380	*10,910	6,790	*8,210	5,050											
-6.0 m	kg																					

SK300LC		Boom: 6.20 m Arm: 2.40 m Bucket: without Counterweight: 5,540 kg Shoe: 600 mm (Heavy Lift)																				
B	A	3.0 m		4.5 m		6.0 m		7.5 m		At max. reach		Radius										
		7.5 m	kg																			
6.0 m	kg																					
4.5 m	kg																					
3.0 m	kg																					
1.5 m	kg																					
G.L.	kg																					
-1.5 m	kg	*11,310	*11,310	*16,100	10,680	11,730	7,050	8,460	5,260	7,920	4,960											
-3.0 m	kg	*20,440	*20,440	*14,920	10,870	*11,240	7,170															
-4.5 m	kg																					

- Notes:**
- Do not attempt to lift or hold any load that is greater than these lift capacities at their specified lift point radius and heights. Weight of all accessories must be deducted from the above lift capacities.
 - Lift capacities are based on machine standing on level, firm, and uniform ground. User must make allowance for job conditions such as soft or uneven ground, out of level conditions, side loads, sudden stopping of loads, hazardous conditions, experience of personnel, etc.
 - Arm top defined as lift point.
 - The above lift capacities are in compliance with ISO 10567. They do not exceed 87% of hydraulic lift capacity or 75% of tipping load. Lift capacities marked with an asterisk (*) are limited by hydraulic capacity rather than tipping load.
 - Operator should be fully acquainted with the Operator's and Maintenance Instructions before operating this machine. Rules for safe operation of equipment should be adhered to at all times.
 - Lift capacities apply to only machine as originally manufactured and normally equipped by KOBELCO CONSTRUCTION MACHINERY CO., LTD.

Standard and Optional Equipment



●=Std ○=Opt

Category	Description	SK300LC-11E	
Engine	ISUZU 6HK1 (EU Stage V compliant)	●	
	Exhaust DOC DPF SCR system	●	
	Alternator 24 V /90 A	●	
	Starter motor 24 V/5 kW	●	
	Batteries 2 x 12 V (140 Ah)	●	
	Fan suction type cooling system	●	
	Auto deceleration function	●	
	Auto idle stop (AIS)	●	
	Hydraulic system	3 work modes H, S, Eco	●
		Power boost (37.8 MPa (385 kgf/cm ²))	●
Heavy lift mode		●	
Pressure release function		●	
Independent travel function		●	
Auto warm up system		●	
Proportional Hand Control (for E&N&B piping)		●	
Hydraulic oil VG46		●	
Piping		E & N&B piping	●
		QH piping	●
Cabin	Air suspension seat with heating	●	
	10 inch colour monitor	●	
	LED door light	●	
	Air-conditioner	●	
	DAB+ radio (FM/AM & AUX & USB & Bluetooth® & hands free telephone)	●	
	Harness for CAB four lights and CAB yellow flasher	●	
	Parallel wiper	●	
	12V power outlet	●	
	Rain visor	○	
	Sun screen	○	
Lights	LED work lights ; 2 on Boom, 1 on upper frame, 2 on rear counterweight	●	
	LED work lights ; 2 on Cab top front	○	
Working equipment	Standard Boom (6.20 m)	●	
	Standard HD arm (3.10 m) with rock guard	●	
	Short HD arm (2.40 m) with rock guard	○	
	Long HD arm (4.00 m) with rock guard	○	
	OHK hook	●	
	Counter weight	Semi heavier C/W (TTL 5,540 kg)	●
Undercarriage		600 mm steel shoe	●
	700 mm steel shoe	○	
	800 mm steel shoe	○	
	Track guide (one per side)	●	
	Additional track guides (two additional per side)	○	
Safety	Lower frame guard	●	
	Engine emergency stop switch	●	
	Pump emergency mode (KPSS release switch)	●	
	Emergency accel dial	●	
	Emergency manual valve for lowering attachment	●	
	Overload alarm	●	
	Safety valve for boom & arm cylinder	●	
	ROPS compliant cab (ISO 12117-2:2008)	●	
	OPG Level II top guard (ISO 10262;1998)	●	
	OPG Level II front guard (ISO 10262;1998)	○	
Eagle-eye view camera (Rear, Right, Left)	●		
Others	Seatbelt indicator on display	●	
	Travel alarm	○	
	Extended handrail	○	
	Refueling pump	●	
	Harness for engine room light	●	
	RAL color	○	
	GEOSCAN	●	

*The air conditioning system on this machine contains fluorinated greenhouse gas HFC-134a (GWP 1430). Quantity of gas 0.9 kg (CO² equivalent 1.3 t).
 Note: Bluetooth® is a registered trademark of the Bluetooth SIG Inc.

