

**SK210<sub>LC</sub>**  
SK210LC-11E

**KOBELCO**

Performance  Design

**SK210<sub>LC</sub>**

- Bucket capacity:  
0.70 – 0.93 m<sup>3</sup>
- Engine power:  
127 kW / 2,000 min<sup>-1</sup>
- Operating weight:  
22,100 – 23,100 kg




Note: This catalogue may contain attachments and optional equipment that are not available in your area. And it may contain photographs of machines with specifications that differ from those of machines sold in your areas. Please consult your nearest KOBELCO distributor for those items you require. Specialist equipment is needed to use this machine in demolition work. Before using it please contact your KOBELCO dealer. Due to our policy of continuous product improvements all designs and specifications are subject to change without advance notice. Copyright by **KOBELCO CONSTRUCTION MACHINERY CO., LTD.** No part of this catalogue may be reproduced in any manner without notice.

**KOBELCO CONSTRUCTION MACHINERY CO., LTD.**

5-15, Kitashinagawa 5-chome, Shinagawa-ku, Tokyo 141-8626 JAPAN  
Tel: +81 (0) 3-5789-2146 Fax: +81 (0) 3-5789-2135  
www.kobelcocm-global.com

Inquiries To:

Bulletin No. SK210LC-11E-TUR-101-2306XXEF

 Complies with the EU Stage V  
exhaust emission regulation

**We Save You Fuel**  
Achieving a Low-Carbon Society



# Performance X Design

SK210LC of KOBELCO has realised a completely new value by harmonising PERFORMANCE – greater efficiency and productivity with an increased power and speed and DESIGN – operator-based operability and comfort, refusing to accept any compromises. In pursuit of unique and matchless machines which are unforgettable once you use them, KOBELCO will continue to rise to meet every challenge.

## THE ULTIMATE IN SIMPLE AND ELEGANT DESIGN

Our pursuit of functional beauty and aesthetic sense produced a new interior design.

### Jog dial

This jog dial integrates multiple functions to realise simple operations. Even with gloved hands, the operator can set various machine conditions without stress.

### LED backlights

The switches and dials have LED backlights – they provide a bright, clear view in the dark and set a luxurious mood.





## UNFORGETTABLE COMFORT

### Air suspension seat with heating

A GRAMMER\* seat is installed as standard equipment, which achieves excellent shock absorption and superior ride comfort.

\*GRAMMER is trademark of GRAMMER AG, registered in Germany and other countries.

### Air-conditioner

Air is blown against the operator's waist and the back of their head, offering more comfortable operation.

### Lever angles allow for comfortable operations

The operator can move the levers horizontally without twisting their wrist, which reduces the fatigue caused by the operations.



### New Hydraulic Control

Our newly upgraded hydraulic control system responds to shorter lever strokes than current models, delivering swifter, more precise movement and improved lever operability.

### LED door light

The LED interior light automatically turns on when the door is opened or when the ignition is set to OFF. This ensures easy entry and exit at nighttime.

### Parallel wipers secure a wide field of view





## SAFETY ON FULL DISPLAY

### Standard 3 Sides Safety Camera System

Our high-resolution, large display shows right, left and rear side cameras together. Multiple display allows the operator to customize viewing needs to enhance operator awareness and jobsite safety.



### Large 10-Inch Color Monitor

The easy-to-operate menu screen and recognizable icons assist the operator to select the most important information needed to ensure jobsite safety and machine control.



### Dial in the Right Information

Simply turn the jog dial to the right or left to select an operational feature, then press the dial to confirm selection.





Max. bucket digging force (Arm 2.94 m)

Normal: **143 kN**

With power boost: **157 kN**

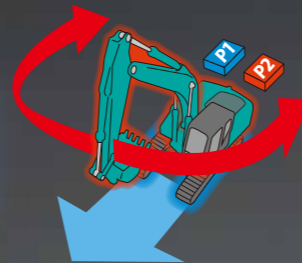
Lift capacity

**11,660 kg**

(Reach: 4.50 m Boom: 5.65 m Arm: 2.94 m Bucket: Without Counterweight: 4,300 kg Shoe: 600 mm <Heavy Lift>)

### Independent Travel

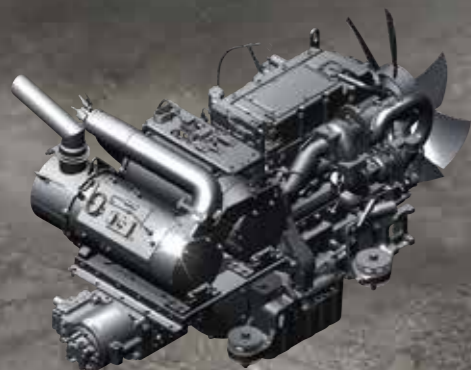
Selecting Independent Travel dedicates one hydraulic pump to travel and one to the attachment on a continuous basis, allowing for a smooth and constant movement speed even while swinging or using the boom or attachment. With Independent Travel, safely carrying a large pipe across a job site is a breeze.



## EXPERIENCING A COMPETENT PERFORMANCE

### Higher Efficiency, plus a EU Stage V Compliant Engine

The new SK210LC is equipped with a Yanmar Stage V compliant engine, which has a higher torque value. Superior balance between engine output and torque contributes to more efficient performance than the previous models. In addition, the DPF replacement interval has been extended.



Model: YANMAR 4TN107FTT

Engine output

**127 kW/2,000 min<sup>-1</sup>**



## GREATER MULTI-FUNCTION CAPABILITIES

### Attachment mode

The flow rate and working pressure modes of the bucket, breaker, nibbler, and rotating grapple are set before delivery, which allows you to start operating immediately. Mode settings for other attachments, such as the tilt rotator, can easily be added or changed.



## EASY MAINTENANCE



**Standard Overhead Top Guard Level II**  
The standard overhead cab guard can be tilted open with gas damper for easy window cleaning. Meets standard top guard level II requirements. (ISO 10262)



**Engine Maintenance**  
Lower service platform makes engine service easier.



**Two-Stage Air Filter**



**DEF/AdBlue® Tank**  
The DEF/AdBlue® fill is located inside the locking tool box.



**Left Side (Radiator and Cooling System Elements)**  
Laid out for easy access to radiator and cooling system with clean out screen.



**Right Side (Ground Level Maintenance)**  
Hydraulic pump and engine filter compartment.



**Fuel Filter / Pre-Filter with Integrated Water Separator**



**Engine Oil Filter**

Note: AdBlue® is a registered trademark of the Verband der Automobilindustrie e.V. (VDA).

# DURABILITY YOU CAN TRUST

## Enhanced body rigidity for 20-ton class machines

The SK210LC machines are widely used in mid-scale construction projects and harsh worksites. The components have been reviewed and improvements have been made to their durability to ensure stable performance in such environments.



### Panels and supports

The right and left side panels and rear supports have been thicker to enhance body rigidity.



### Bucket cylinder rod pin

The increased diameter of the bucket cylinder rod pin contributes to enhanced durability for various types of attachments.

# CONVENIENT AND SENSIBLE EQUIPMENT



### Engine start password

A password is required when starting the engine for greater security. The initial password must be set at our workshop.



### Wiper adjustment function

In addition to the intermittent wiper mode and continuous wiper mode, the one-time wiper mode was added.



### Parallel wipers

Sun screen (option)



### Console mount

The console-integrated seat allows for comfortable operation.



### 12 V power supply



### Smartphone holder

## GEOSCAN

GEOSCAN allows you to use the Internet to manage information from your office for machines operating in all areas. This provides a wide range of support for your business operations.





# Specifications

## Engine

Model	YANMAR 4TN107FTT
Type	Four-stroke, liquid-cooled, direct injection diesel, turbo charged complies with EU Stage V exhaust emission regulation
No. of cylinders	4
Bore and stroke	107 mm × 127 mm
Displacement	4.567 L
Rated power output	122 kW / 2,000 min <sup>-1</sup> (ISO 9249 : with fan) 127 kW / 2,000 min <sup>-1</sup> (ISO 14396: without fan)
Max. torque	791 N·m / 1,500 min <sup>-1</sup> (ISO 9249: with fan) 805 N·m / 1,500 min <sup>-1</sup> (ISO 14396: without fan)

## Hydraulic system

Pump	
Type	Axial piston pumps + extra gear pump + pilot gear pump
Max. discharge flow	2 × 220 L/min, 1 × 40.6 L/min, 1 × 20 L/min
Relief valve setting	
Boom, arm and bucket	34.3 MPa (350 kgf/cm <sup>2</sup> )
Power Boost*	37.8 MPa (385 kgf/cm <sup>2</sup> )
Travel circuit	34.3 MPa (350 kgf/cm <sup>2</sup> )
Swing circuit	29.0 MPa (296 kgf/cm <sup>2</sup> )
Control circuit	5.0 MPa (50 kgf/cm <sup>2</sup> )
Pilot control pump	Gear type
Main control valve	8-Spool valve
Oil cooler	Air cooled type

## Swing system

Swing motor	One fixed displacement piston motor
Brake	Hydraulic; locking automatically when the swing control lever is in neutral position
Parking brake	Oil disc brake, hydraulic operated automatically
Swing speed	12.7 min <sup>-1</sup>
Swing torque	71.5 kN·m

## Attachments

Backhoe bucket and combination

Use	Backhoe bucket		
	Normal digging		
Bucket capacity	ISO heaped m <sup>3</sup>	0.70	0.93
Opening width	With side cutter mm	1,080	1,330
	Without side cutter mm	980	1,230
No. of teeth		5	5
Bucket weight	kg	630	720
Combination	2.40 m short arm	○	◎
	2.94 m standard arm	○	△
	3.50 m long arm	◎	×

◎ Standard ○ Recommended △ Loading only × Not recommended

## Travel system

Travel motors	2 × axial-piston, two-step motors
Travel brakes	Hydraulic brake per motor
Parking brakes	Oil disc brake per motor
Travel shoes	49 each side
Travel speed	6.0/3.6 km/h
Drawbar pulling force	228 kN (SAE)
Gradeability	70% (35°)

## Cab & control

Cab	
All-weather, sound-suppressed steel cab mounted on the high suspension mounts filled with silicone oil and equipped with a heavy, insulated floor mat.	
Control	
Two hand levers and two foot pedals for travel	
Two hand levers for excavating and swing	
Electric rotary-type engine throttle	
Noise levels	
External	103 dB(A) (2000/14/EC)
Operator	71 dB(A) (ISO 6396)

## Boom, arm & bucket

Boom cylinders	120 mm × 1,355 mm
Arm cylinder	135 mm × 1,558 mm
Bucket cylinder	120 mm × 1,080 mm

## Refilling capacities & lubrications

Fuel tank	321 L
Cooling system	23 L
Engine oil	20 L
Travel reduction gear	2 × 4.5 L
Swing reduction gear	1 × 2.7 L
Hydraulic oil tank	140 L tank oil level
	244 L hydraulic system
DEF/Urea tank	83 L

## Working ranges

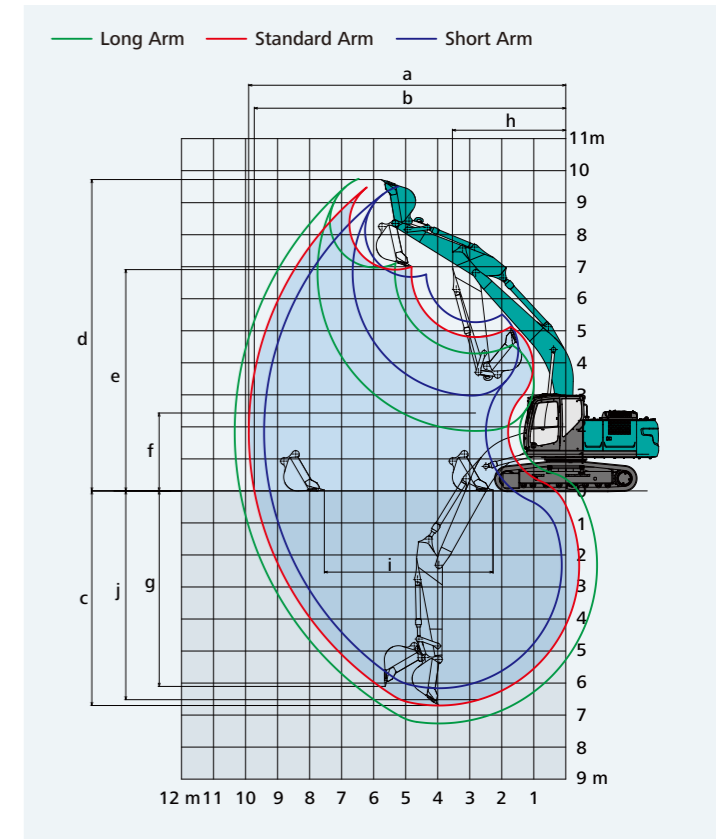
Unit: mm

Range	Arm	5.65 m		
		Short 2.40 m	Standard 2.94 m	Long 3.50 m
a- Max. digging reach		9,420	9,900	10,340
b- Max. digging reach at ground level		9,240	9,730	10,170
c- Max. digging depth		6,160	6,700	7,260
d- Max. digging height		9,510	9,720	9,750
e- Max. dumping clearance		6,680	6,910	6,970
f- Min. dumping clearance		2,980	2,430	1,870
g- Max. vertical wall digging depth		5,570	6,100	6,470
h- Min. swing radius		3,560	3,550	3,480
i- Horizontal digging stroke at ground level		4,080	5,270	6,080
j- Digging depth for 2.4 m (8') flat bottom		5,950	6,520	7,080
Bucket capacity ISO heaped m <sup>3</sup>		0.93	0.80	0.70

Unit: kN

Arm length	Short 2.40 m	Standard 2.94 m	Long 3.50 m
Bucket digging force	143 157*	143 157*	143 157*
Arm crowding force	121 133*	102 112*	91.8 101*

\*Power Boost engaged.



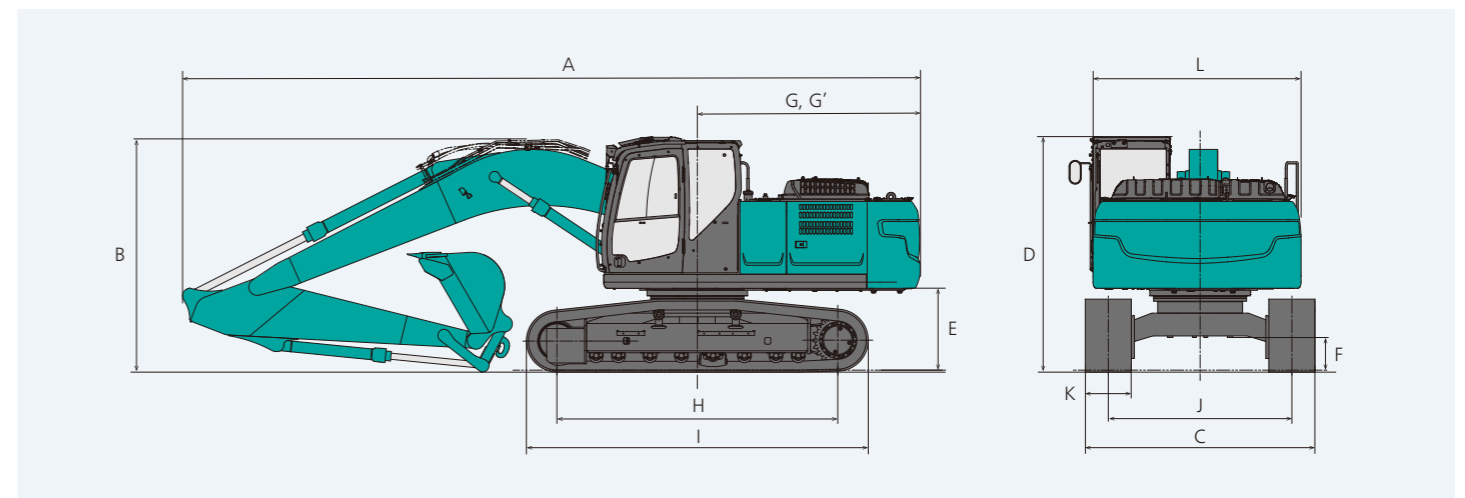
## Dimension

Arm length	Short 2.40 m	Standard 2.94 m	Long 3.50 m
A Overall length	9,680	9,600	9,670
B Overall height (to top of boom)	3,200	3,030	3,210
C Overall width of crawler	2,990		
D Overall height (to top of cab)	3,060		
E Ground clearance of rear end*	1,060		
F Ground clearance*	425		

Unit: mm

G Tail swing radius	2,910
G' Distance from centre of swing to rear end	2,900
H Tumbler distance	3,660
I Overall length of crawler	4,450
J Track gauge	2,390
K Shoe width	600
L Overall width of upperstructure	2,710

\*Without including height of shoe

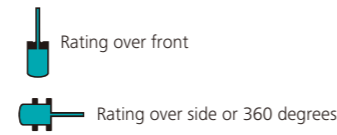
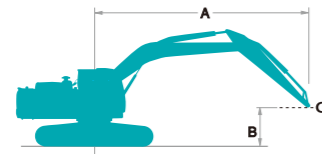


# Operating weight & ground pressure

In standard trim, with standard boom, 2.94 m arm, and 0.80 m³ ISO heaped bucket

Shaped		Triple grouser shoes (even height)			
Shoe width	mm	600	700	790	900
Overall width of crawler	mm	2,990	3,090	3,180	3,290
Ground pressure	kPa	46	40	36	32
Operating weight	kg	22,100	22,500	22,700	23,100

# Lift capacities



A - Reach from swing centerline to arm top  
 B - Arm top height above/below ground  
 C - Lift point  
 Relief valve setting: 37.8 MPa (385 kgf/cm²)

SK210LC		Boom: 5.65 m Arm: 2.94 m Bucket: without Counterweight: 4,300 kg Shoe: 600 mm (Heavy Lift)												
		1.5 m		3.0 m		4.5 m		6.0 m		7.5 m		At max. reach		
B	A	Radius												
7.5 m	kg											*4,270	*4,270	6.26 m
6.0 m	kg											*3,940	3,850	7.36 m
4.5 m	kg											*3,860	3,270	8.03 m
3.0 m	kg					*9,360	7,670	*7,270	5,000	5,540	3,560	*3,930	2,980	8.38 m
1.5 m	kg					*11,040	7,100	7,570	4,720	5,400	3,430	*4,170	2,870	8.45 m
G.L.	kg			*6,330	*6,330	11,660	6,790	7,360	4,530	5,290	3,330	*4,600	2,920	8.25 m
-1.5 m	kg	*6,700	*6,700	*11,060	*11,060	11,560	6,700	7,270	4,460	5,260	3,310	5,030	3,170	7.75 m
-3.0 m	kg	*11,730	*11,730	*14,650	13,240	*10,550	6,780	7,320	4,510			6,010	3,770	6.89 m
-4.5 m	kg			*10,860	*10,860	*7,950	7,050					*5,980	5,330	5.50 m

SK210LC		Boom: 5.65 m Arm: 3.50 m Bucket: without Counterweight: 4,300 kg Shoe: 600 mm (Heavy Lift)												
		1.5 m		3.0 m		4.5 m		6.0 m		7.5 m		At max. reach		
B	A	Radius												
7.5 m	kg											*3,640	*3,640	6.84 m
6.0 m	kg											*4,540	3,790	7.86 m
4.5 m	kg											*5,840	5,350	8.49 m
3.0 m	kg											*5,440	3,710	8.49 m
1.5 m	kg											*3,400	2,970	8.82 m
G.L.	kg			*12,860	*12,860	*8,480	7,840	*6,750	5,050	5,550	3,560	*3,490	2,720	8.82 m
-1.5 m	kg	*7,240	*7,240	*10,380	7,190	7,600	4,740	5,380	3,410	3,410	3,410	*3,710	2,610	8.89 m
-3.0 m	kg	*7,730	*7,730	*11,520	6,770	7,330	4,500	5,240	3,280	3,280	3,280	*4,110	2,650	8.70 m
-4.5 m	kg	*6,570	*6,570	*10,960	*10,960	11,470	6,610	7,190	4,380	5,170	3,220	4,540	2,840	8.22 m
-3.0 m	kg	*10,480	*10,480	*15,820	12,950	*11,000	6,630	7,190	4,380			5,290	3,300	7.42 m
-4.5 m	kg	*15,580	*15,580	*12,690	*12,690	*9,090	6,820	*6,410	4,540			*6,100	4,390	6.16 m

SK210LC		Boom: 5.65 m Arm: 2.40 m Bucket: without Counterweight: 4,300 kg Shoe: 600 mm (Heavy Lift)												
		3.0 m		4.5 m		6.0 m		7.5 m		At max. reach				
B	A	Radius												
7.5 m	kg											*6,320	6,030	5.58 m
6.0 m	kg											*5,760	4,340	6.80 m
4.5 m	kg											*5,990	3,610	7.52 m
3.0 m	kg											5,090	3,270	7.89 m
1.5 m	kg											4,940	3,150	7.97 m
G.L.	kg											5,090	3,230	7.75 m
-1.5 m	kg	*11,440	*11,440	*11,390	6,760	7,320	4,510					5,630	3,560	7.22 m
-3.0 m	kg	*13,150	*13,150	*9,880	6,900	*7,190	4,630					*6,580	4,370	6.29 m
-4.5 m	kg			*6,230	*6,230							*5,690	*5,690	4.72 m

- Notes:**
- Do not attempt to lift or hold any load that is greater than these lift capacities at their specified lift point radius and heights. Weight of all accessories must be deducted from the above lift capacities.
  - Lift capacities are based on machine standing on level, firm, and uniform ground. User must make allowance for job conditions such as soft or uneven ground, out of level conditions, side loads, sudden stopping of loads, hazardous conditions, experience of personnel, etc.
  - Arm top defined as lift point.
  - The above lift capacities are in compliance with ISO 10567. They do not exceed 87% of hydraulic lift capacity or 75% of tipping load. Lift capacities marked with an asterisk (\*) are limited by hydraulic capacity rather than tipping load.
  - Operator should be fully acquainted with the Operator's and Maintenance Instructions before operating this machine. Rules for safe operation of equipment should be adhered to at all times.
  - Lift capacities apply to only machine as originally manufactured and normally equipped by KOBELCO CONSTRUCTION MACHINERY CO., LTD.

# Standard and Optional Equipment



● =Std ○ =Opt — = N/A

Category	Description	SK210LC-11E
Engine	YANMAR 4TN107FTT (EU Stage V compliant)	●
	Exhaust DOC DPF SCR system	●
	Alternator 24 V/80 A	●
	Starter motor 24 V/5 kW	●
	Batteries 2 x 12 V (130 Ah)	●
	Fan suction type cooling system	●
	Auto deceleration function	●
	Auto idle stop	●
Hydraulic system	3 work modes H, S, Eco	●
	Power boost (37.8 MPa (385 kgf/cm²))	●
	Heavy lift mode	●
	Pressure release function	●
	Independent travel function	●
	Auto warm up system	●
	Proportional Hand Control (for E&N&B piping)	●
	Hydraulic oil VG46	●
Piping	E&N&B piping	●
	QH piping	●
Cabin	Air suspension seat with heating	●
	10 inch colour monitor	●
	LED door light	●
	Air-conditioner	●
	Harness for CAB four lights and CAB yellow flasher	●
	Parallel wiper	●
	12 V power supply	●
	Rain visor	○
Lights	Sun screen	○
	LED work lights ; 2 on Boom, 1 on upper frame, 2 on rear counterweight	●
Working equipment	LED work lights ; 2 on CAB top front	○
	Standard Boom (5.65 m)	●
Counter weight	Standard HD arm (2.94 m) with rock guard	●
	Short HD arm (2.40 m) with rock guard	○
	Long HD arm (3.50 m) with rock guard	○
	OHK hook	●
Undercarriage	Standard CW (TTL 4,300 kg)	●
	600 mm steel shoe	●
	700 mm steel shoe	○
	790 mm steel shoe	○
	900 mm steel shoe	○
	Track guide (one per side)	●
Safety	Additional track guides (two additional per side)	○
	Lower frame guard	●
	Engine emergency stop switch	●
	Pump emergency mode (KPSS release switch)	●
	Emergency accel dial	●
	Emergency manual valve for lowering attachment	●
	Overload alarm	●
	Safety valve for boom & arm cylinder	●
	ROPS compliant cab (ISO 12117-2:2008)	●
	OPG Level II top guard (ISO 10262:1998)	●
	OPG Level II front guard (ISO 10262:1998)	○
	Eagle-eye view camera (Rear, Right, Left)	●
Seatbelt indicator on display	●	
Others	Travel alarm	○
	Extended hand rail	○
	Refueling pump	●
	Harness for engine room light	●
	RAL color	○
	GEOSCAN	●

\*The air conditioning system on this machine contains fluorinated greenhouse gas HFC-134a (GWP 1430). Quantity of gas 0.8 kg (CO2 equivalent 1.3 t).