

KOBELCO

Performance  Design

SK 140SRLC

STANDARD EQUIPMENT

ENGINE

- Engine, ISUZU MOTORS LIMITED 4JJ1XDDV A01, Diesel engine with turbocharger and intercooler, EU Stage V compliant
- Auto Idle Stop
- Automatic engine deceleration
- Batteries (2 x 12 V - 88 Ah)
- Starting motor (24 V - 4 kW), 50 amp alternator
- Engine oil pan drain cock
- Double element air cleaner
- Refuelling pump

CONTROL

- Working mode selector (H-mode, S-mode and ECO-mode)
- N&B piping (proportional hand controlled)
- Boom, arm, safety valves and overload alarm

SWING SYSTEM & TRAVEL SYSTEM

- Swing rebound prevention system
- Straight propel system
- Two-speed travel with automatic shift down
- Sealed & lubricated track links
- 600 mm HD shoes
- Grease-type track adjusters
- Automatic swing brake
- Lower Frame Guard
- Dozer blade

MIRRORS, LIGHTS & CAMERAS

- Rear view mirror, rear view camera, left side view camera and right side view camera
- Standard 3 Sides Safety Camera System
- Three front working lights (LED)

OPTIONAL EQUIPMENT

- Long arm
- Wide range of shoes
- Front-guard protective structure (may interfere with bucket action)
- Additional counterweight (+580 kg)
- Cab top work LED lights (two lights)

CAB & CONTROL

- Two control levers, pilot-operated
 - Horn, electric
 - Integrated left-right slide-type control box
 - LED door light (interior)
 - Coat hook
 - Large cup holder
 - Detachable two-piece floor mat
 - Mechanical suspension seat
 - Retractable seatbelt
 - Headrest
 - Handrails
 - Intermittent parallel wiper with double-spray washer
 - Skylight
 - Openable top guard (ISO 10262: 1998)
 - Tinted safety glass
 - Pull-type front window and removable lower front window
 - Easy-to-read 10-inch LCD SCREEN multi-display monitor
 - Emergency escape hammer
 - 12 V converter
 - Hands-free telephone
 - USB port
 - Automatic air conditioner
 - Air conditioning system
- The air conditioning system on this machine contains fluorinated greenhouse gas HFC-134a (GWP 1430). Quantity of gas 0.8 kg (CO₂ equivalent 1.2 t)

- Air suspension seat
- Rain visor (may interfere with bucket action)
- Roll sun shade
- Travel alarm

Note: Standard and optional equipment may vary. Consult your KOBELCO dealer for specifics.

Note: This catalogue may contain attachments and optional equipment that are not available in your area. And it may contain photographs of machines with specifications that differ from those of machines sold in your areas. Please consult your nearest KOBELCO distributor for those items you require. Due to our policy of continuous product improvements all designs and specifications are subject to change without advance notice. Copyright by **KOBELCO CONSTRUCTION MACHINERY CO., LTD.** No part of this catalogue may be reproduced in any manner without notice.


KOBELCO CONSTRUCTION MACHINERY CO., LTD.

5-15, Kitashinagawa 5-chome, Shinagawa-ku, Tokyo 141-8626 JAPAN
Tel: +81 (0) 3-5789-2146 Fax: +81 (0) 3-5789-2135
www.kobelcocm-global.com

Enquiries To:

Bulletin No. SK140SRLC-7-TURKEY-101-2212XXEX



 Complies with the EU Stage V exhaust emission regulation

We Save You Fuel
Achieving a Low-Carbon Society



Performance  Design

SK140SR_{LC} of KOBELCO has realised a completely new value by harmonising PERFORMANCE – greater efficiency and productivity with an increased power and speed and DESIGN – operator-based operability and comfort, refusing to accept any compromises. In pursuit of unique and matchless machines which are unforgettable once you use them, KOBELCO will continue to rise to meet every challenge.

SK 140SR_{LC}

THE ULTIMATE IN SIMPLE AND ELEGANT DESIGN

Our pursuit of functional beauty and aesthetic sense produced a new interior design.

Jog dial

This jog dial integrates multiple functions to realise simple operations. Even with gloved hands, the operator can set various machine conditions without stress.

LED backlights

The switches and dials have LED backlights – they provide a bright, clear view in the dark and set a luxurious mood.





UNFORGETTABLE COMFORT

1 Suspension seat

A suspension seat is installed as standard equipment, which achieves excellent shock absorption and superior ride comfort.

2 Air conditioner blowing from the rear

Air is blown against the operator's waist and the back of their head, offering more comfortable operation.

3 Lever angles allow for comfortable operations

The operator can move the levers horizontally without twisting their wrist, which reduces the fatigue caused by the operations.



New hydraulic control

Our newly upgraded hydraulic control system responds to shorter lever strokes than current models, delivering swifter, more precise movement and improved lever operability.

4 LED door light **NEW**

The LED interior light automatically turns on when the door is opened or when the ignition is set to OFF. This ensures easy entry and exit at nighttime.

5 Parallel wipers secure a wide field of view **NEW**





A WIDER VIEW BRINGS A WIDER RANGE OF USE

10-inch colour monitor (the largest in the industry)

The easy-to-operate menu screen facilitates reading of important information. Images from the built-in cameras can be checked on the large screen, which helps secure safety. In addition, each icon has become easy to recognise. A password is required when starting the engine for greater security.



Standard 3 Sides Safety Camera System



Right and rear cameras

Images from the right camera and rear camera are displayed together on the large colour monitor. The right camera view can be selected between the straight view mode and right side view mode.

In addition, the bird's-eye view mode and eagle eye view mode can also be selected.

Screen display linked with the jog dial operation



The jog dial can be operated as desired without causing stress. Turn the jog dial to the right or left to select an item and press the dial to confirm the selection.

»»» Bucket digging force

Increased by **17%**

(Compared to the SK140SRLC-3 model)

»»» New hydraulic control

The redesigned hydraulic flow division ensures the right pressure at the right time for faster digging.

It contributes to improved cycle time.

EXPERIENCING A COMPETENT PERFORMANCE

Our high-power engine complies with STAGE V emission regulations

Compared to previous models, the engine output is significantly increased, which thereby shortens the digging cycle time remarkably. It attains high performances without reducing the speed even when heavy a load is applied or when travelling on a slope.



Model: ISUZU 4JJ1XDDV A01

Engine output

Increased by **16%**

(Compared to the SK140SRLC-3 model)

»»» Digging cycle time Shortened by **16%**

(Compared to the SK140SRLC-3 model)

*The described performance is a value under specific usage conditions.
This number will differ on the actual usage environment.



GREATER MULTI-FUNCTION CAPABILITIES

Attachment mode

The flow-rate modes of the bucket, breaker, nibbler, and rotating grapple are set before delivery, which allows you to start operating immediately. Mode settings for other attachments, such as the tilt rotator, can easily be added or changed.

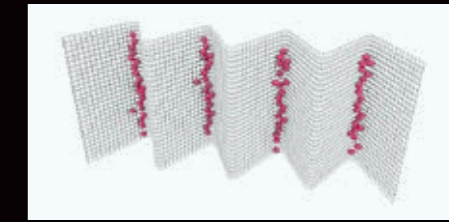
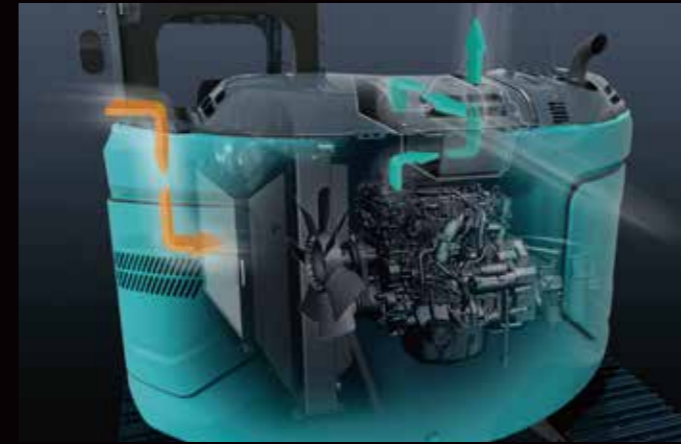


Adjustment for hydraulic flow

Divide ratio of hydraulic flow can be adjusted by service factory for custom usage.



NON-STOP OPERATION BY iNDr



iNDr Filter

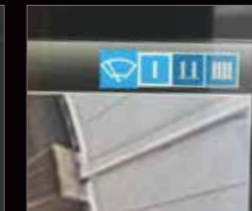
A high-density stainless steel mesh filter blocks dust and debris from entering the cooling package during air intake. This prevents the cooling package and air cleaner from clogging, allowing the machine to maintain cooling performance. The ridges of the corrugated filter allow air to pass through, while the grooves collect dust and debris, preventing the filter from clogging.

CONVENIENT AND SENSIBLE EQUIPMENT



Engine start password

A password is required when starting the engine for greater security. The initial password must be set at our workshop.



Wiper adjustment function

In addition to the intermittent wiper mode and continuous wiper mode, the one-time wiper mode was added.



Parallel wipers/Roll sun shade



Console mount

The console-integrated seat allows for comfortable operation.



USB port/12 V power outlet



Smartphone holder

You can use the holder with your smartphone connected to the USB port.



Built-in rear camera/right camera



Openable FOPS guard

The openable guard allows for easy maintenance.



Urea tank

Urea filter cap is placed on the step for easy access.



Two-Stage Air Filter

Provides superior cleaning and engine protection.

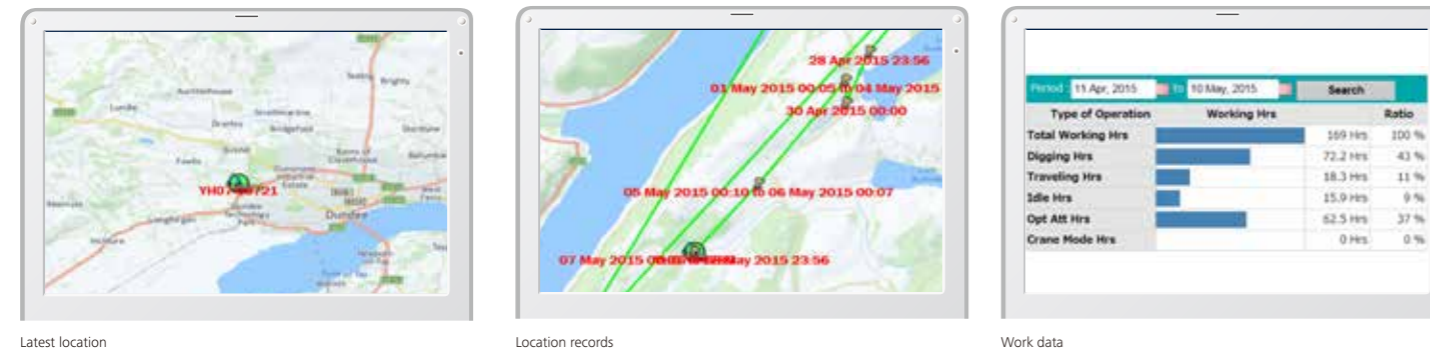
Excavator Remote Monitoring System



Direct Access to Operational Status

Location Data

Accurate location data can be obtained even from sites where communications are difficult.



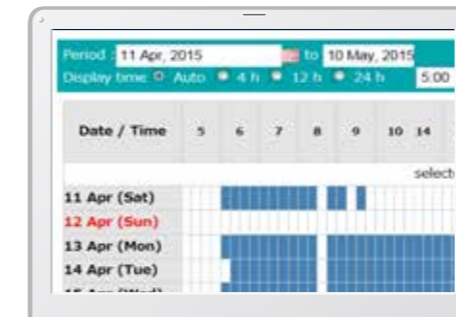
Latest location

Location records

Work data

Operating Hours

- A comparison of operating times of machines at multiple locations shows which locations are busier and more profitable.
- Operating hours on site can be accurately recorded, for running time calculations needed for rental machines, etc.



Daily report

Fuel Consumption Data

- Data on fuel consumption and idling times can be used to indicate improvements in fuel consumption.

Work mode	Working Hrs	Total Fuel Consumption
H mode	2:06	24.5 L
S mode	0:00	0.0 L
E mode	169:19	1489.7 L
TOTAL	171:25	1514.2 L

Fuel consumption

Graph of Work Content

- The graph shows how working hours are divided among different operating categories, including digging, idling, travelling and optional operations.



Work status

Maintenance Data and Warning Alerts

Machine Maintenance Data

- Provides maintenance status of separate machines operating at multiple sites.
- Maintenance data is also relayed to KOBELCO service personnel, for more efficient planning of periodic servicing.

Model	Serial No.	Hour Meter	Engine Oil
SK135SRLC-3/SK140SRL	YH07-09721	734 Hr	434
SK135SRLC-3/SK140SRL	YH07-09789	73 Hr	429
SK210LC-9	YQ13-10454	960 Hr	58
SK210LC-9	YQ13-10481	549 Hr	498
SK75SR-	YT08-20174		

Maintenance

Warning Alerts

- This system warns an alert if an anomaly is sensed, preventing damage that could result in machine downtime.

Alarm Information Can Be Received through E-mail

- Alarm information or maintenance notice can be received through E-mail, using a computer or cell phone.



Alarm messages can be received on mobile device.

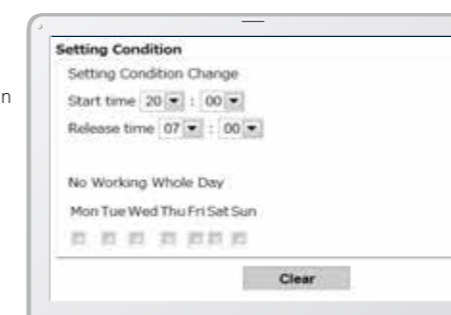
Daily/Monthly Reports

- Operational data downloaded onto a computer helps in formulating daily and monthly reports.

Security System

Engine Start Alarm

- The system can be set an alarm if the machine is operated outside designated time.



Engine start alarm outside prescribed work time

Area Alarm

- It can be set an alarm if the machine is moved out of its designated area to another location.



Alarm for outside of reset area

Specifications

Engine

Model	ISUZU MOTORS LIMITED 4JJ1XDDV A01
Type	Four-cycle, liquid-cooled, direct injection diesel, turbo charged complies with EU Stage V exhaust emission regulation
No. of cylinders	4
Bore and stroke	95.4 mm x 104.9 mm
Displacement	2,999 L
Rated power output	78.6 kW/2,200 min ⁻¹ (ISO 9249: with fan) 86 kW/2,200 min ⁻¹ (ISO 14396: without fan)
Max. torque	354 N·m/1,800 min ⁻¹ (ISO 9249: with fan) 375 N·m/1,800 min ⁻¹ (ISO 14396: without fan)

Hydraulic system

Pump	
Type	Two variable displacement piston pumps + one gear pump
Max. discharge flow	2 x 142 L/min 1 x 66 L/min
Relief valve setting	
Boom, arm and bucket	34.3 MPa
Travel circuit	34.3 MPa
Swing circuit	28.0 MPa
Control circuit	5.0 MPa
Pilot control pump	Gear type
Main control valves	12-spool
Oil cooler	Air cooled type

Swing system

Swing motor	One fixed displacement piston motor
Brake	Hydraulic; locking automatically when the swing control lever is in the neutral position
Parking brake	Wet multiple plate
Swing speed	11.0 min ⁻¹
Tail swing radius	1,490 mm
Swing torque	40.4 kN·m

Attachments

Backhoe bucket and combination

Use	Backhoe bucket							
	Normal digging							
Bucket capacity	ISO heaped	m ³	0.24	0.31	0.38	0.45	0.50	0.57
	Struck	m ³	0.20	0.23	0.28	0.35	0.37	0.43
Opening width	With side cutter	mm	590	700	800	915	1,000	1,100
	Without side cutter	mm	500	640	740	855	940	1,040
No. of teeth			3	3	4	4	5	5
Bucket weight		kg	280	300	340	360	390	410
Combination	2.38 m arm		○	○	○	○	◎	△
	2.84 m arm		○	○	◎	△	×	×

◎ Standard ○ Recommended △ Loading only × Not recommended

Travel system

Travel motors	Variable displacement piston, two-speed motors
Travel brakes	Hydraulic brake
Parking brakes	Wet multiple plate
Travel shoes	46 each side
Travel speed	3.4/5.6 km/h
Drawbar pulling force	140 kN (SAE)
Gradeability	70% {35°}

Cab & control

Cab	
All-weather, sound-suppressed steel cab mounted on the silicon-sealed viscous mounts and equipped with a heavy, insulated floor mat	
Control	
Two hand levers and two foot pedals for travel	
Two hand levers for excavating and swing	
Electric rotary-type engine throttle	
Noise levels	
External	99 dB(A)
Operator	74 dB(A)

Boom, arm & bucket

Boom cylinders	100 mm x 1,092 mm
Arm cylinder	115 mm x 1,116 mm
Bucket cylinder	100 mm x 903 mm

Refilling capacities & lubrications

Fuel tank	186 L
Cooling system	17 L
Engine oil	17 L
Travel reduction gear	2 x 2.1 L
Swing reduction gear	1.65 L
Hydraulic oil tank	89.9 L tank oil level
	182 L hydraulic system
DEF/Urea tank	26.0 L

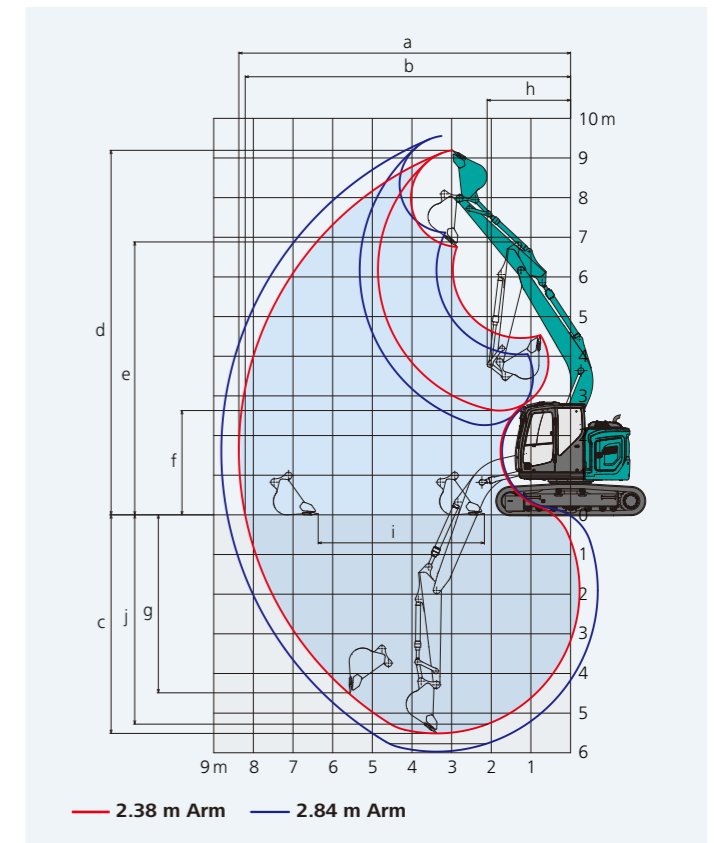
Working ranges

Unit: m

Boom	4.68 m	
Range	Arm	2.38 m 2.84 m
a- Max. digging reach		8.37 8.81
b- Max. digging reach at ground level		8.21 8.66
c- Max. digging depth		5.51 5.97
d- Max. digging height		9.19 9.56
e- Max. dumping clearance		6.76 7.12
f- Min. dumping clearance		2.63 2.26
g- Max. vertical wall digging depth		4.49 4.94
h- Min. swing radius		2.13 2.52
i- Horizontal digging stroke at ground level		4.19 4.68
j- Digging depth for 2.4 m (8') flat bottom		5.28 5.77
Bucket capacity ISO heaped m ³		0.50 0.38

Digging force (ISO 6015) Unit: kN

Arm length	2.38 m 2.84 m
Bucket digging force	105.4
Arm crowding force	64.0 58.0



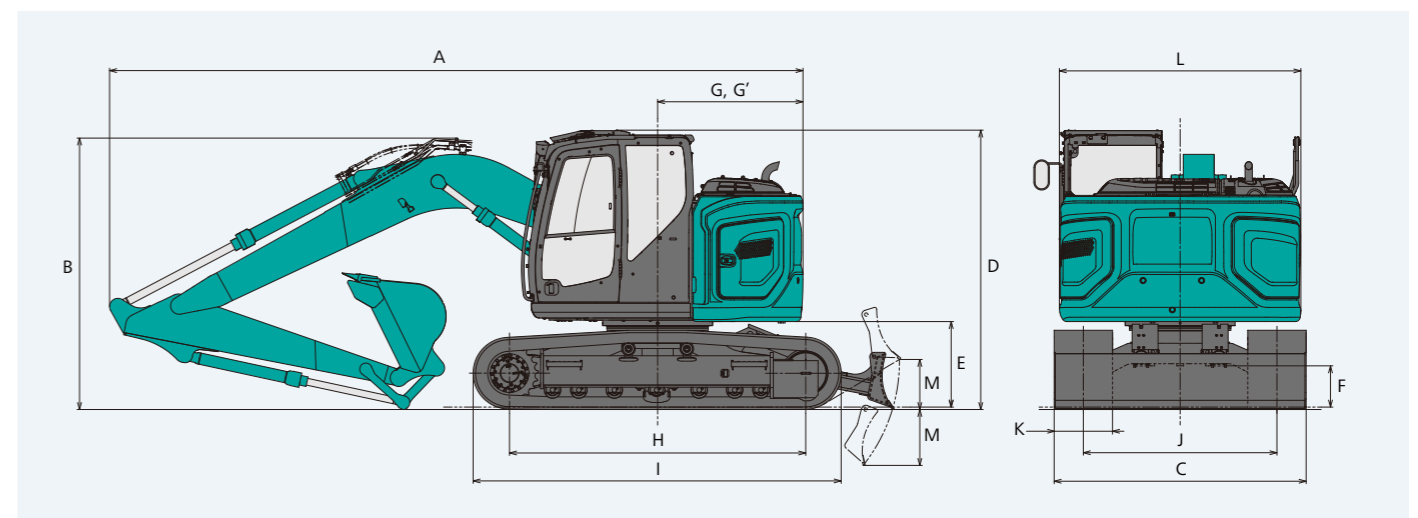
Dimensions

Unit: mm

Arm length	2.38 m 2.84 m
A Overall length	7,130 7,150
B Overall height (to top of boom)	2,790 3,140
C Overall width (600 mm shoe)	2,590
D Overall height (to top of cab)	2,870
E Ground clearance of rear end*	880
F Ground clearance*	410
G Tail swing radius {additional counterweight}	1,490 {1,610**}

G'	Distance from centre of swing to rear end {additional counterweight}	1,490 {1,600**}
H	Tumbler distance	3,040
I	Overall length of crawler	3,780
J	Track gauge	1,990
K	Shoe width	600
L	Overall width of upperstructure	2,480
M	Dozer blade(up/down)	515/575

*Without including height of shoe lug **580 kg counterweight



Operating weight & ground pressure

Standard boom

Boom: 4.68 m Arm: 2.38 m Bucket: 0.5 m³ ISO heaped bucket Dozer: with

	HD shoes		
Shoes (mm)	500	600	700
Dozer (mm)	2,490	2,590	2,690
Counterweight	standard		
Ground pressure (kPa)	47.2	40.0	34.8
Operating weight (kg)	15,900	16,100	16,400

	HD shoes		
Shoes (mm)	500	600	700
Dozer (mm)	2,490	2,590	2,690
Counterweight	+ 580 kg		
Ground pressure (kPa)	48.9	41.5	36.1
Operating weight (kg)	16,500	16,700	17,000

Boom: 4.68 m Arm: 2.84 m Bucket: 0.38 m³ ISO heaped bucket Dozer: with

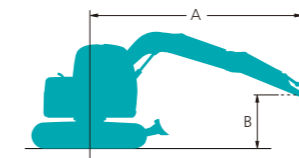
	HD shoes		
Shoes (mm)	500	600	700
Dozer (mm)	2,490	2,590	2,690
Counterweight	standard		
Ground pressure (kPa)	47.2	40.0	34.8
Operating weight (kg)	15,900	16,100	16,400

	HD shoes		
Shoes (mm)	500	600	700
Dozer (mm)	2,490	2,590	2,690
Counterweight	+ 580 kg		
Ground pressure (kPa)	48.9	41.4	36.1
Operating weight (kg)	16,400	16,700	17,000

Lift capacities

SK140SR_{LC}

SK140SR_{LC}-7



Rating over front

Rating over side or 360 degrees

A - Reach from swing centreline to arm top
 B - Arm top height above/below ground
 C - Lift point
 Relief valve setting: 34.3 MPa

SK140SR _{LC}		Arm: 2.38 m Bucket: without Counterweight: 3,150 kg Shoe: 600 mm Dozer: blade up										
		1.5 m		3.0 m		4.5 m		6.0 m		At max. reach		
B \ A												Radius
7.5 m	kg									*2,270	*2,270	3.82 m
6.0 m	kg					*3,390	*3,390			*1,800	*1,800	5.56 m
4.5 m	kg			*4,300	*4,300	*3,670	*3,670	*3,380	2,410	*1,670	*1,670	6.50 m
3.0 m	kg			*6,560	*6,560	*4,430	3,590	3,620	2,320	*1,670	*1,670	7.00 m
1.5 m	kg			*5,220	*5,220	*5,250	3,310	3,490	2,210	*1,760	1,700	7.13 m
G.L.	kg			*6,040	5,660	5,220	3,140	3,400	2,120	*1,980	1,730	6.94 m
-1.5 m	kg	*5,330	*5,330	*8,040	5,670	5,160	3,090	3,370	2,100	*2,440	1,940	6.38 m
-3.0 m	kg	*9,110	*9,110	*6,420	5,810	*4,440	3,160			*3,370	2,520	5.35 m

SK140SR _{LC}		Arm: 2.38 m Bucket: without Counterweight: 3,150 kg + 580 kg Shoe: 600 mm Dozer: blade up										
		1.5 m		3.0 m		4.5 m		6.0 m		At max. reach		
B \ A												Radius
7.5 m	kg									*2,270	*2,270	3.82 m
6.0 m	kg					*3,390	*3,390			*1,800	*1,800	5.56 m
4.5 m	kg			*4,300	*4,300	*3,670	*3,670	*3,380	2,630	*1,670	*1,670	6.50 m
3.0 m	kg			*6,560	*6,560	*4,430	3,910	*3,630	2,550	*1,670	*1,670	7.00 m
1.5 m	kg			*5,220	*5,220	*5,250	3,640	3,790	2,430	*1,760	*1,760	7.13 m
G.L.	kg			*6,040	*6,040	*5,650	3,460	3,690	2,340	*1,980	1,920	6.94 m
-1.5 m	kg	*5,330	*5,330	*8,040	6,520	*5,450	3,410	3,670	2,320	*2,440	2,150	6.38 m
-3.0 m	kg	*9,110	*9,110	*6,420	6,390	*4,440	3,480			*3,370	2,780	5.35 m

SK140SR _{LC}		Arm: 2.84 m Bucket: without Counterweight: 3,150 kg Shoe: 600 mm Dozer: blade up												
		1.5 m		3.0 m		4.5 m		6.0 m		7.5 m		At max. reach		
B \ A														Radius
7.5 m	kg					*2,360	*2,360					*2,050	*2,050	4.61 m
6.0 m	kg					*2,960	*2,960	*2,110	*2,110			*1,700	*1,700	6.12 m
4.5 m	kg					*3,280	*3,280	*3,090	2,440			*1,590	*1,590	6.99 m
3.0 m	kg			*5,680	*5,680	*4,060	3,650	*3,400	2,340			*1,590	*1,590	7.45 m
1.5 m	kg			*7,740	6,030	*4,970	3,350	3,500	2,210	*2,080	1,570	*1,670	1,540	7.58 m
G.L.	kg			*6,220	5,650	5,220	3,130	3,380	2,100			*1,850	1,560	7.40 m
-1.5 m	kg	*4,560	*4,560	*8,400	5,590	5,120	3,050	3,330	2,050			*2,210	1,710	6.88 m
-3.0 m	kg	*7,660	*7,660	*7,080	5,690	*4,820	3,080					*3,040	2,130	5.93 m
-4.5 m	kg			*4,330	*4,330							*2,760	*2,760	4.26 m

SK140SR _{LC}		Arm: 2.84 m Bucket: without Counterweight: 3,150 kg + 580 kg Shoe: 600 mm Dozer: blade up												
		1.5 m		3.0 m		4.5 m		6.0 m		7.5 m		At max. reach		
B \ A														Radius
7.5 m	kg					*2,360	*2,360					*2,050	*2,050	4.61 m
6.0 m	kg					*2,960	*2,960	*2,110	*2,110			*1,700	*1,700	6.12 m
4.5 m	kg					*3,280	*3,280	*3,090	2,670			*1,590	*1,590	6.99 m
3.0 m	kg			*5,680	*5,680	*4,060	3,980	*3,400	2,560			*1,590	*1,590	7.45 m
1.5 m	kg			*7,740	6,610	*4,970	3,670	*3,780	2,430	*2,080	1,740	*1,670	*1,670	7.58 m
G.L.	kg			*6,220	*6,220	*5,540	3,460	3,680	2,330			*1,850	1,730	7.40 m
-1.5 m	kg	*4,560	*4,560	*8,400	6,170	*5,530	3,370	3,620	2,280			*2,210	1,910	6.88 m
-3.0 m	kg	*7,660	*7,660	*7,080	6,270	*4,820	3,400					*3,040	2,360	5.93 m
-4.5 m	kg			*4,330	*4,330							*2,760	*2,760	4.26 m

Note:

- Do not attempt to lift or hold any load that is greater than these lift capacities at their specified lift point radius and heights. Weight of all accessories must be deducted from the above lift capacities.
- Lift capacities are based on machine standing on level, firm, and uniform ground. User must make allowance for job conditions such as soft or uneven ground, out of level conditions, side loads, sudden stopping of loads, hazardous conditions, experience of personnel, etc.
- Bucket pin attachment point defined as lift point.
- The above lift capacities are in compliance with ISO 10567. They do not exceed 87% of hydraulic lift capacity or 75% of tipping load. Lift capacities marked with an asterisk(*) are limited by hydraulic capacity rather than tipping load.
- Operator should be fully acquainted with the Operator's and Maintenance Instructions before operating this machine. Rules for safe operation of equipment should be adhered to at all times.
- Lift capacities apply to only machine as originally manufactured and normally equipped by KOBELCO CONSTRUCTION MACHINERY CO., LTD.