

# Standard and Optional Equipment

●=Std ○=Opt

Category	Description	SK210LC-11	
		LC	Long Reach
ENGINE	YANMAR 4TN107FTT (Emission regulation certified)	●	●
	Auto engine acceleration/deceleration	●	●
	Auto Idle Stop	●	●
HYDRAULIC SYSTEM	3 work modes H, S, Eco	●	—
	Power boost	●	—
	Heavy lift mode	●	—
	Hydraulic pressure release	●	●
	Independent travel	●	●
	Swing priority	●	●
	Boom to arm regeneration	●	●
	Auto warm-up system	●	●
	Bi-direction (proportional hand control) and single-direction auxiliary hydraulics (N&B)	●	—
	Hydraulic oil VG46	●	●
	Hydraulic oil VG68	○	○
	Suspension seat	●	●
CABIN	10-inch color monitor	●	●
	LED door light	●	●
	Automatic climate control	●	●
	Radio (AM/FM, AUX, USB, Bluetooth® and hands-free telephone)	●	●
	12V power outlet	●	●
	Rain visor	○	○
	5 LED work lights: 2 on boom, 2 on cab front, 1 on front right	●	●
WORKING EQUIPMENT	Standard HD boom 5.65 m	●	—
	Short HD arm 2.40 m with rock guard	○	—
	Standard HD arm 2.94 m with rock guard	●	—
	Long Reach (50 ft)	—	●
COUNTER WEIGHT	Semi heavier C/W 4,300 kg with swing flashers	●	—
	Heavier C/W 5,490 kg with swing flashers	—	●
UNDERCARRIAGE	600 mm triple grouser shoe	●	●
	700 mm triple grouser shoe	○	○
	790 mm triple grouser shoe	○	○
	Track guides (three per side)	●	●
	Lower swivel guard	●	●
SAFETY	ROPS cab (ISO 12117-2:2008)	●	●
	Tilt opening top cab guard (Top guard level II ISO 10262:1998)	○	○
	Bar-type front guard (Front guard level II ISO 10262:1998)	○	○
	2-inch retractable seat belt	●	●
	Seatbelt indicator on display	●	●
	Travel alarm	●	●
	Swing flashers in counterweight	●	●
	Left and right side mirrors	●	●
OTHERS	3-side 270-degree camera system	○	○
	Refueling pump	●	●
	KOMEXS Machine Monitoring	●	●

Note: Bluetooth® is a registered trademark of the Bluetooth SIG Inc.

Note: This catalog may contain attachments and optional equipment that are not available in your area. And it may contain photographs of machines with specifications that differ from those of machines sold in your areas. Please consult your nearest KOBELCO distributor for those items you require. Due to our policy of continuous product improvements all designs and specifications are subject to change without advance notice.

Copyright by **KOBELCO CONSTRUCTION MACHINERY CO., LTD.** No part of this catalog may be reproduced in any manner without notice.

KOBELCO CONSTRUCTION MACHINERY CO., LTD.

www.kobelcocm-global.com



Inquiries To:



Performance  Design

- Engine power:
- 127 kW / 2,000 min<sup>-1</sup>
- Operating weight:
- 22,000 – 24,000 kg

# Performance Design

## PERFORMANCE BY DESIGN

The next generation of KOBELCO excavators brings together superior performance and thoughtful design like never before. Performance enhancements offer greater efficiency and productivity along with increased speed. Design improvements provide the ultimate in comfort and control.

KOBELCO refuses to compromise by creating machines that meet every challenge.

Machines representative of global product. Options may not be available in your markets.



### Lift Capacity

**11,730 kg**

(Reach: 4.50 m Boom: 5.65 m Arm: 2.94 m)

Bucket: Without Counterweight: 4,300 kg Shoe: 600 mm

<Heavy Lift> At Ground level )

### Bucket Digging Force

Normal: **143 kN**

With power boost: **157 kN**

## EXCEPTIONAL PERFORMANCE JUST GOT EVEN BETTER

### Higher Efficiency, Plus Emission Regulation Compliant Engine

The new SK210LC is equipped with a Yanmar Emission regulation compliant engine, which has a higher torque value. Superior balance between engine output and torque contributes to more efficient performance than the previous models.



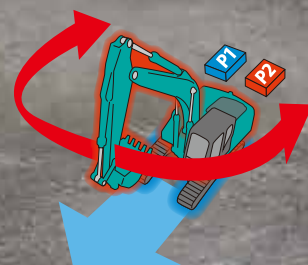
Model: YANMAR 4TN107FTT

### Engine Output

**127 kW/2,000 min<sup>-1</sup>**

### Independent Travel

Selecting Independent Travel dedicates one hydraulic pump to travel and one to the attachment on a continuous basis, allowing for a smooth and constant movement speed even while swinging or using the boom or attachment. With Independent Travel, safely carrying a large pipe across a jobsite is a breeze.







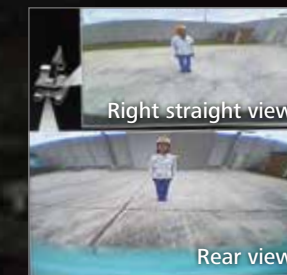
## SAFETY ON FULL DISPLAY

### Rear View Camera (Standard)

A rear view camera is installed as standard to simplify checking for safety behind the machine.

### 3 Sides Safety Camera System (Optional)

Our high-resolution, large display shows right, left and rear side cameras together. Multiple display allows the operator to customize viewing needs to enhance operator awareness and jobsite safety.



### Large 10-Inch Color Monitor

The easy-to-operate menu screen and recognizable icons assist the operator to select the most important information needed to ensure jobsite safety and machine control.

### Dial in the Right Information

Simply turn the jog dial to the right or left to select an operational feature, then press the dial to confirm selection.







## PREMIER OPERATOR COMFORTS

### Suspension Seat

A suspension seat is installed as standard equipment, which achieves excellent shock absorption and superior ride comfort.

### Multi Vent Air Conditioner

Cool air is blown from multiple outlets toward the operator's body for more comfortable operation.

### Ergonomic Lever Angles

Operators can move levers horizontally without twisting their wrists, reducing fatigue.



### Adjustable Height Joysticks

Joystick height is manually adjustable to suit operator's preference.

### LED Interior Light

Interior lights turn on and off automatically when the door is open or the ignition is turned to the OFF position. This ensures safe entry and exit in the dark.

### Tilting Left Side Console

Flip-up left console with integrated pilot control lock lever tilts for easy entry and exit from the cab.





## THE ULTIMATE IN SIMPLE DESIGN

In our pursuit of functional beauty and styling, we created an all new interior design focused with the operator in mind.

### Jog Dial

This dial integrates multiple functions into a single, easy to use interface. Even with gloves on, the operator can make the adjustments they need.

### LED Illumination

Dials and buttons are now backlit to provide a bright, clear view in any lighting condition.





# GREATER MULTI-FUNCTION CAPABILITIES

## Attachment Mode Selection

The auxiliary flow rates for the bucket, breaker, nibbler and thumb are all now adjustable by the operator through the monitor, allowing you to change tools quickly and easily. Mode settings for other attachments like the tilt rotator can be added or changed.



# EASY MAINTENANCE



**Overhead Top Guard Level II (Optional)**  
The overhead cab guard can be tilted open with gas damper for easy window cleaning. Meets top guard level II requirements. (ISO 10262)



**Engine Maintenance**  
Lower service platform makes engine service easier.



**Two-Stage Air Filter**



**DEF/AdBlue® Tank**  
The DEF/AdBlue® fill is located inside the locking tool box.



**Left Side (Radiator and Cooling System Elements)**  
Laid out for easy access to radiator and cooling system with clean out screen.



**Right Side (Ground Level Maintenance)**  
Hydraulic pump and engine filter compartment.



**Fuel Filter / Pre-Filter with Integrated Water Separator**



**Engine Oil Filter**

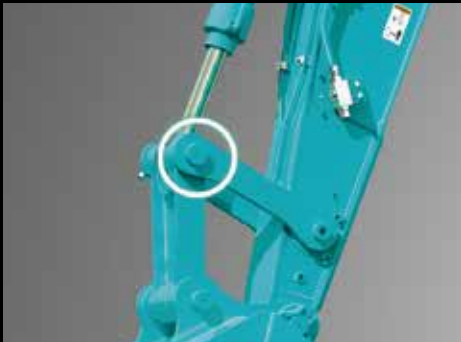
Note: AdBlue® is a registered trademark of the Verband der Automobilindustrie e.V. (VDA).



# DURABILITY YOU CAN TRUST

## Heavier Door Panels and Supports for Added Body Rigidity

Newly designed and reinforced rear right and left doors provide added protection for the radiator and pump compartments.



**Bucket Cylinder Rod Pin\***  
The increased diameter of the bucket cylinder rod pin contributes to enhanced durability for various types of attachments.  
(Bucket pin dimensions have not changed from previous models.)



## Total Support for Machines with Network Speed and Accuracy

KOMEXS is a telematics system for receiving machine information. Manage your machines anywhere in the world using the Internet. Location, workload and diagnostic data aid business operations.

## Direct Access to Operational Status

**Location Data**  
Accurate location data can be obtained even from sites where communications are difficult.

**Fuel Consumption Data**  
Data on fuel consumption and idling times can be used to indicate improvements in fuel consumption.

**Operating Hours**  
A comparison of operating times of machines at multiple locations shows which locations are busier and more profitable. Operating hours on site can be accurately recorded, for running time calculations needed for rental machines, etc.

**Graph of Work Content**  
The graph shows how working hours are divided among different operating categories, including digging, idling, traveling, and optional operations (NGB).



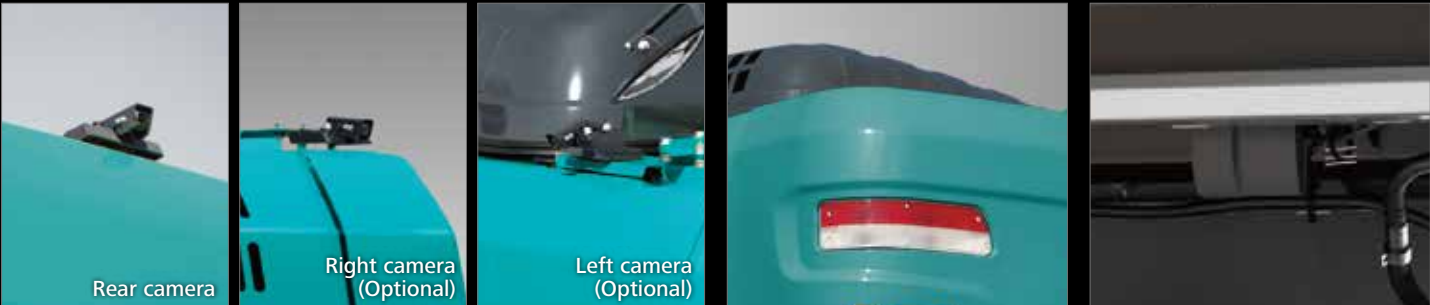
## Maintenance Data and Warning Alerts

**Machine Maintenance Data**  
Provides maintenance status of separate machines operating at multiple sites. Maintenance data is also relayed to KOBELCO service personnel, for more efficient planning of periodic servicing.

**Security System**  
**Engine Start Alarm**  
Sends a notification if the engine is started outside of pre-defined hours.

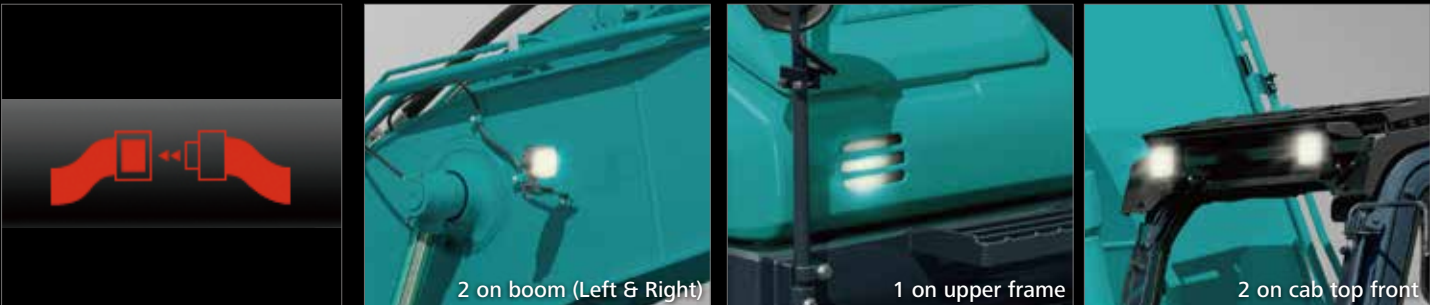
**Area Alarm**  
Sends a notification if the machine leaves a pre-defined area.

# SAFETY AND CONVENIENCE IN EVERY CORNER



**Standard Rear Camera, Optional Left and Right side cameras**  
**Swing Flashers for a Safer Jobsite**  
Standard swing flashers notify ground workers that the machine is swinging.

**Travel Alarm**



**Seatbelt Unfastened Indicator on Monitor**  
**Standard 5 LED Lights**  
Bright LED lights ensure visibility even during night work.



**Bar-Type Front Cab Guard (Optional)**  
**Hands-Free Bluetooth® Phone Calls**  
**USB Charging Port / 12V Power Outlet**  
**Smartphone Holder**  
Includes USB port for charging.

\*not on long reach models.



Specifications

Engine

Model	YANMAR 4TN107FTT		
Type	Direct injection, water-cooled, 4-cycle diesel engine with turbocharger, intercooler, Emission regulation certified		
No. of cylinders	4		
Bore and stroke	107 mm × 127 mm		
Displacement	4.567 L		
Rated power output	119 kW / 2,000 min <sup>-1</sup> (ISO 9249 : with fan)		
	127 kW / 2,000 min <sup>-1</sup> (ISO 14396: without fan)		
Max. torque	783 N·m / 1,500 min <sup>-1</sup> (ISO 9249 : with fan)		
	805 N·m / 1,500 min <sup>-1</sup> (ISO 14396: without fan)		

Hydraulic system

Pump	
Type	Two variable displacement pumps + pilot gear pump
Max. discharge flow	2 × 220 L/min 1 × 20 L/min
Relief valve setting	
Boom, arm and bucket	34.3 MPa
Power Boost	37.8 MPa
Travel circuit	34.3 MPa
Swing circuit	29.0 MPa
Control circuit	5.0 MPa
Pilot control pump	Gear type
Main control valve	8-spool
Oil cooler	Air cooled type

Swing system

Swing motor	Axial piston motor
Brake	Hydraulic; locking automatically when the swing control lever is in neutral position
Parking brake	Oil disc brake, hydraulic operated automatically
Swing speed	12.7 min <sup>-1</sup>
Swing torque	71.5 kN·m

Operating weight & ground pressure

In standard trim, with standard boom, 2.94 m arm, and 0.80 m³ ISO heaped bucket

Shaped		Triple grouser shoes (even height)		
Shoe width	mm	600	700	790
Overall width of crawler	mm	2,990	3,090	3,180
Ground pressure	kPa	45.6	39.9	35.7
Operating weight	kg	22,000	22,400	22,600

Travel system

Travel motors	2 speed axial-piston with auto down shift
Parking brakes	Spring applied, hydraulic release
Travel shoes	49 each side
Travel speed (high/low)	6.0/3.6 km/h
Drawbar pulling force	228 kN (SAE J 1309)
Gradeability	70% {35°}

Cab & control

Cab
All-weather, sound-suppressed steel cab mounted on silicon-sealed viscous mounts and equipped with a heavy, insulated floor mat.
Control
Two hand levers and two foot pedals for travel
Two hand levers for excavating and swing
Electric rotary-type engine throttle
Proportional hand controlled auxiliary hydraulics

Cylinders

Boom cylinders	120 mm × 1,355 mm
Arm cylinder	135 mm × 1,558 mm
Bucket cylinder	120 mm × 1,080 mm

Refilling capacities & lubrications

Fuel tank	320 L
Cooling system	23 L
Engine oil	20 L
Travel reduction gear	2 × 4.5 L
Swing reduction gear	2.7 L
Hydraulic oil tank	140 L: Tank oil level
	244 L: Hydraulic system
DEF tank	83 L

Working ranges

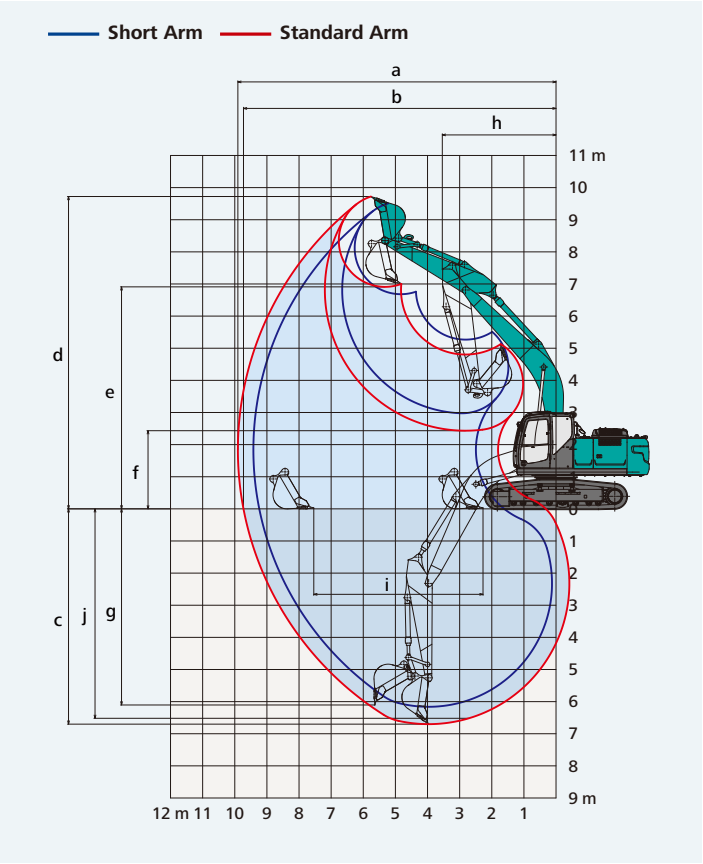
Boom		5.65 m	
Range	Arm	Short 2.40 m	Standard 2.94 m
a-Max. digging reach		9,420	9,900
b-Max. digging reach at ground level		9,240	9,730
c-Max. digging depth		6,160	6,700
d-Max. digging height		9,510	9,720
e-Max. dumping clearance		6,680	6,910
f-Min. dumping clearance		2,980	2,430
g-Max. vertical wall digging depth		5,570	6,100
h-Min. swing radius		3,560	3,550
i-Horizontal digging stroke at ground level		4,080	5,270
j-Digging depth for 2.4 m (8') flat bottom		5,950	6,520
Bucket capacity ISO heaped m³		0.93	0.80

Digging Force (ISO 6015)		Unit: kN	
Arm length		Short 2.40 m	Standard 2.94 m
Bucket digging force		143 157*	
Arm crowding force		121 133*	102 112*

\*Power Boost engaged.

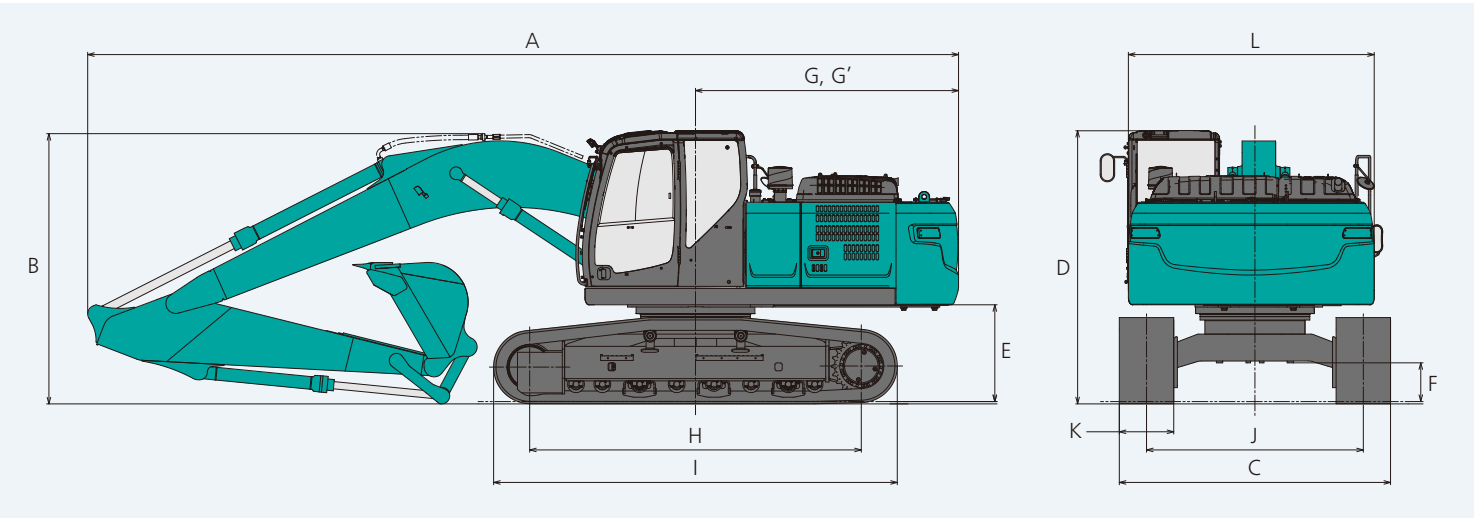
Dimensions

Arm length		Short 2.40 m	Standard 2.94 m
A Overall length		9,680	9,600
B Overall height (to top of boom)*		3,160	2,980
C Overall width**		2,990	
D Overall height (to top of cab)*		3,010	
E Ground clearance of rear end*		1,060	
F Ground clearance*		425	



G Tail swing radius	2,910
G' Distance from center of swing to rear end	2,900
H Tumbler distance	3,660
I Overall length of crawler	4,450
J Track gauge	2,390
K Shoe width	600
L Overall width of upperstructure	2,710

\*Without including height of shoe lug. \*\*Shoe width: 600 mm





LONG REACH

The long reach attachment is suited for working sites that need a large working range for works such as dredging, slope finishing, and handling soil from an underground.



Max. digging reach  
15,820 mm



Working ranges

			Unit: mm
Boom			8.75 m
Arm			6.35 m
Range			
a- Max. digging reach			15,820
b- Max. digging reach at ground level			15,710
c- Max. digging depth			12,010
d- Max. digging height			13,900
e- Max. dumping clearance			11,530
f- Min. dumping clearance			2,080
g- Max. vertical wall digging depth			11,170
h- Min. front swing radius			4,720
i- Min. front swing length			4,720
j- Height at min. swing radius			10,520
k- Digging depth for 2.4 m (8') flat bottom			11,910
l-	Horizontal digging stroke at ground level	stroke	11,610
m-		min.	2,210
Bucket capacity ISO heaped m³			0.45

Unit: kN	
Digging Force (ISO 6015)	
Arm length	6.35 m
Bucket digging force	88
Arm crowding force	53.7



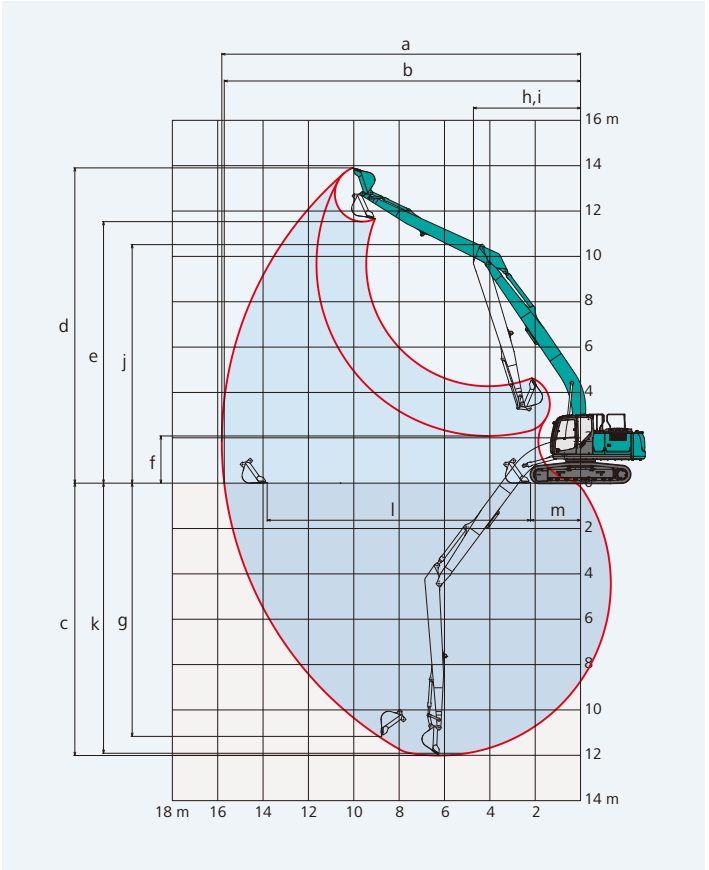
Cylinders

Boom cylinders	120 × 1,355
Arm cylinder	135 × 1,489
Bucket cylinder	111 × 885



Dimensions

Unit: mm	
Arm length	
A Overall length	12,690
B Overall height (to top of boom)*	3,120
C Overall width**	2,990
D Overall height (to top of cab)*	3,060
E Ground clearance of rear end*	1,060
F Ground clearance*	425



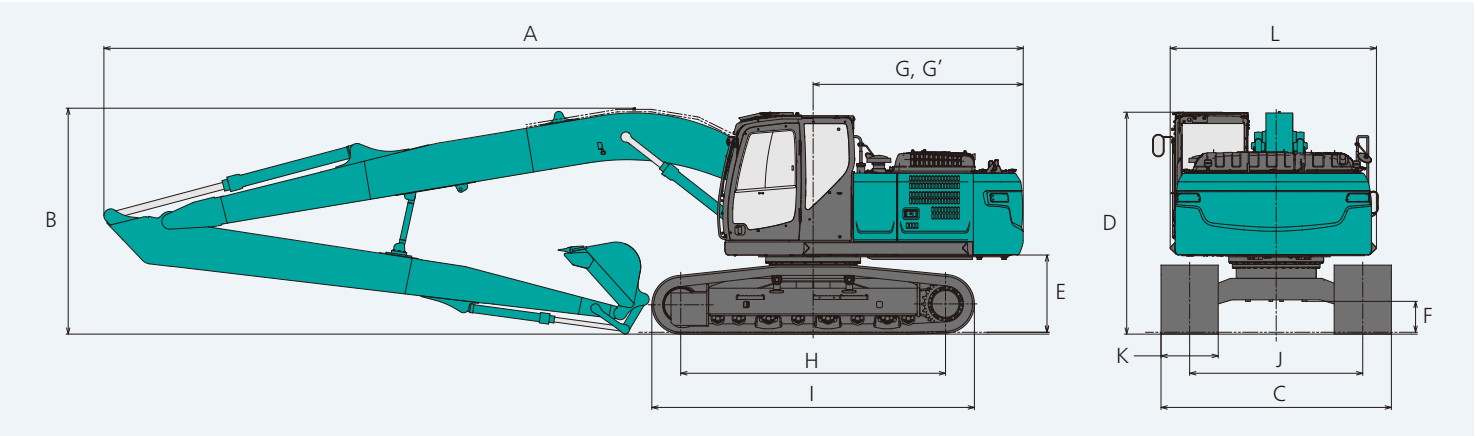
G Tail swing radius	2,910
G' Distance from center of swing to rear end	2,900
H Tumbler distance	3,660
I Overall length of crawler	4,450
J Track gauge	2,390
K Shoe width	600
L Overall width of upperstructure	2,850

\*Without including height of shoe lug. \*\*Shoe width: 600 mm

Operating Weight & Ground Pressure

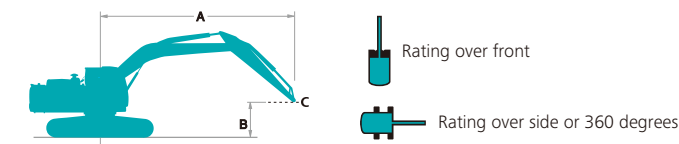
In standard trim, with 8.75 m boom and 6.35 m arm, and 0.45 m³ ISO heaped bucket

Shaped		Triple grouser shoes (even height)		
Shoe width	mm	600	700	790
Overall width of crawler	mm	2,990	3,090	3,180
Ground pressure	kPa	48.5	42.3	37.9
Operating weight	kg	23,300	23,800	24,000





Lift Capacities



Relief valve setting: 34.3 MPa  
Relief valve setting {Heavy Lift}: 37.8 MPa

STANDARD MACHINE

SK210LC		Boom: 5.65 m Arm: 2.94 m Without bucket: counterweight: 4,300 kg Shoe: 600 mm (Heavy Lift)											
A \ B		1.5 m		3.0 m		4.5 m		6.0 m		7.5 m		At max. reach	
		Radius											
7.5m	kg							*5,320	*5,320			*4,280	*4,280
6.0m	kg							*5,890	5,510			*3,950	3,870
4.5m	kg							*6,440	5,310	5,710	3,710	*3,870	3,290
3.0m	kg					*9,380	7,710	*7,290	5,030	5,580	3,590	*3,940	3,000
1.5m	kg					*11,060	7,140	7,620	4,760	5,430	3,460	*4,180	2,890
G.L.	kg			*6,350	*6,350	11,730	6,830	7,400	4,570	5,330	3,360	*4,620	2,950
-1.5m	kg	*6,710	*6,710	*11,070	*11,070	11,630	6,750	7,320	4,490	5,300	3,340	5,070	3,200
-3.0m	kg	*11,740	*11,740	*14,680	13,330	*10,570	6,830	7,370	4,540			6,060	3,810
-4.5m	kg			*10,890	*10,890	*7,970	7,090					*6,000	5,370

SK210LC		Boom: 5.65 m Arm: 2.40 m Without bucket: counterweight: 4,300 kg Shoe: 600 mm (Heavy Lift)											
A \ B		3.0 m		4.5 m		6.0 m		7.5 m		At max. reach			
												Radius	
7.5m	kg									*6,330	6,050	5.59 m	
6.0m	kg					*6,480	5,410			*5,760	4,360	6.80 m	
4.5m	kg			*8,270	8,160	*6,930	5,230	5,640	3,650	*5,610	3,630	7.52 m	
3.0m	kg			*10,110	7,520	*7,710	4,970	5,550	3,560	5,110	3,280	7.89 m	
1.5m	kg			*11,530	7,030	7,570	4,720	5,430	3,460	4,960	3,170	7.97 m	
G.L.	kg			11,690	6,810	7,400	4,570	5,350	3,390	5,110	3,250	7.75 m	
-1.5m	kg	*11,450	*11,450	*11,400	6,800	7,360	4,540			5,660	3,580	7.22 m	
-3.0m	kg	*13,160	*13,160	*9,880	6,940	*7,200	4,650			*6,590	4,400	6.28 m	
-4.5m	kg			*6,230	*6,230					*5,700	*5,700	4.71 m	

LONG REACH

SK210LC		Boom: 8.75 m Arm: 6.35 m Without bucket: counterweight: 5,490 kg Shoe: 600 mm																	
A \ B		1.5 m		3.0 m		4.5 m		6.0 m		7.5 m		9.0 m		10.5 m		12.0 m		13.5 m	
		Radius																	
12.0m	kg																	*1,110	*1,110
10.5m	kg													*1,910	*1,910			*1,020	*1,020
9.0m	kg													*2,250	*2,250	*1,640	*1,640	*980	*980
7.5m	kg													*2,470	*2,470	*2,090	*2,090	*960	*960
6.0m	kg													*2,610	*2,610	*2,420	2,120	*950	*950
4.5m	kg											*3,060	*3,060	*2,790	2,590	*2,600	2,040	*970	*970
3.0m	kg			*5,200	*5,200	*6,580	*6,580	*4,860	*4,860	*3,950	*3,950	*3,380	3,130	*3,000	2,450	*2,730	1,950	*1,000	*1,000
1.5m	kg					*7,350	*7,350	*5,670	5,120	*4,440	3,780	*3,700	2,920	*3,210	2,310	*2,870	1,860	*1,040	*1,040
G.L.	kg			*2,080	*2,080	*5,010	*5,010	*6,280	4,670	*4,850	3,490	*3,980	2,730	*3,400	2,180	2,850	1,770	*1,110	*1,110
-1.5m	kg	*2,060	*2,060	*2,840	*2,840	*4,980	*4,980	*6,620	4,390	*5,130	3,290	4,170	2,580	3,360	2,080	2,780	1,700	*1,210	*1,210
-3.0m	kg	*2,970	*2,970	*3,740	*3,740	*5,630	*5,630	*6,720	4,250	5,230	3,160	4,060	2,480	3,290	2,000	2,730	1,660	*1,340	*1,340
-4.5m	kg	*3,900	*3,900	*4,760	*4,760	*6,650	6,380	*6,580	4,210	5,170	3,100	4,010	2,430	3,250	1,970	2,720	1,640	*1,540	1,460
-6.0m	kg	*4,920	*4,920	*5,940	*5,940	*8,020	6,480	*6,230	4,250	*4,980	3,110	4,010	2,430	3,260	1,980	*2,600	1,670	*1,830	1,630
-7.5m	kg	*6,050	*6,050	*7,330	*7,330	*7,170	6,670	*5,620	4,350	*4,530	3,190	*3,700	2,490	*2,970	2,050			*2,320	1,910
-9.0m	kg			*7,630	*7,630	*5,820	*5,820	*4,650	4,540	*3,740	3,330	*2,930	2,630					*2,540	2,410
-10.5m	kg					*3,820	*3,820	*3,080	*3,080	*2,270	*2,270							*2,190	*2,190

- Note:
- Do not attempt to lift or hold any load that is greater than these lift capacities at their specified lift point radius and heights. Weight of all accessories must be deducted from the above lift capacities.
  - Lift capacities are based on machine standing on level, firm, and uniform ground. User must make allowance for job conditions such as soft or uneven ground, out of level conditions, side loads, sudden stopping of loads, hazardous conditions, experience of personnel, etc.
  - Bucket pin attachment point defined as lift point.
  - The above lift capacities are in compliance with ISO 10567. They do not exceed 87% of hydraulic lift capacity or 75% of tipping load. Lift capacities marked with an asterisk(\*) are limited by hydraulic capacity rather than tipping load.
  - Operator should be fully acquainted with the Operator’s and Maintenance Instructions before operating this machine. Rules for safe operation of equipment should be adhered to at all times.
  - Lift capacities apply to only machine as originally manufactured and normally equipped by KOBELCO CONSTRUCTION MACHINERY CO., LTD.



5K210LC-11

# MEMO