

KOBELCO

SK17SR-6D

SK17SR



**DRIVEN BY
PASSION**

Small in Size, Big on Power



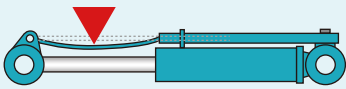
Mini excavators are widely used on sites where space is restricted, such as in residential areas and industrial premises. Users want high power and performance in a small package, with excellent stability in operation and rugged construction and durability, to reduce downtime. The SK17SR combines a compact design with wide digging reach for efficient performance, excellent maneuverability, and tough durability to ensure an extended working life.

Reliable Construction

SK17SR has the durability needed in a machine that works in tight spaces.

Spring Steel Cylinder Rod Guard

The spring steel cylinder rod guard is standard for the bucket, boom and arm cylinder. The use of spring steel not only protects the cylinder rod, but gives resiliency to the guard itself.



Boom cylinder rod guard



Arm cylinder rod guard



Bucket cylinder rod guard



Underside Protector

The frame corners are reinforced with thick casting iron. The side cover has a thicker plate for higher resilience.



LED Work Light

LED Work Light is mounted under the boom to protect from damage.



Dozer

Dozer cylinder rod guard protects dozer cylinder from damage.



Blade Cutting Edge

Backfill dozer blade has wear-resistant cutting edge.



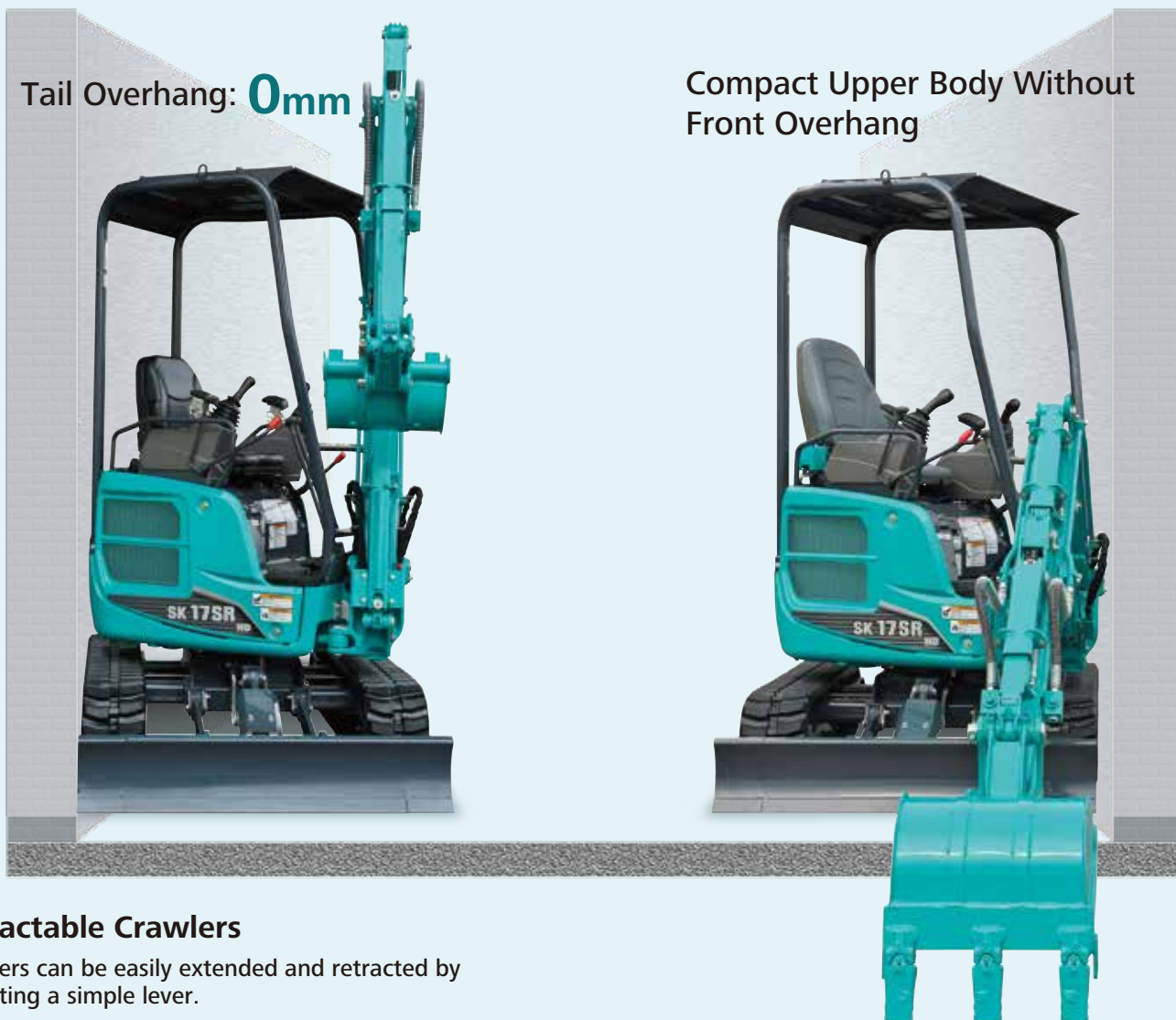
Improved travel motor and swing motor

Equipped with a traveling motor and a swing motor with improved durability. Prevents machine downtime in harsh work environments.

Great Performance in Tight Places

Short Tail Swing

The combination of side-ditch digging function and zero tail radius makes it easy to dig next to walls with a compact operating footprint.



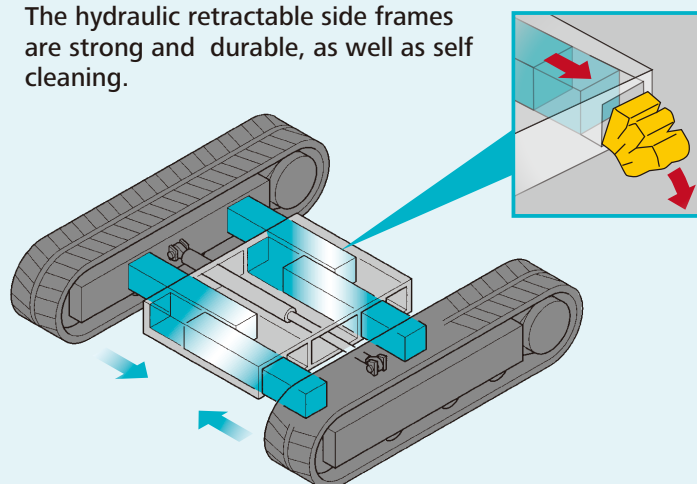
Retractable Crawlers

Crawlers can be easily extended and retracted by operating a simple lever.



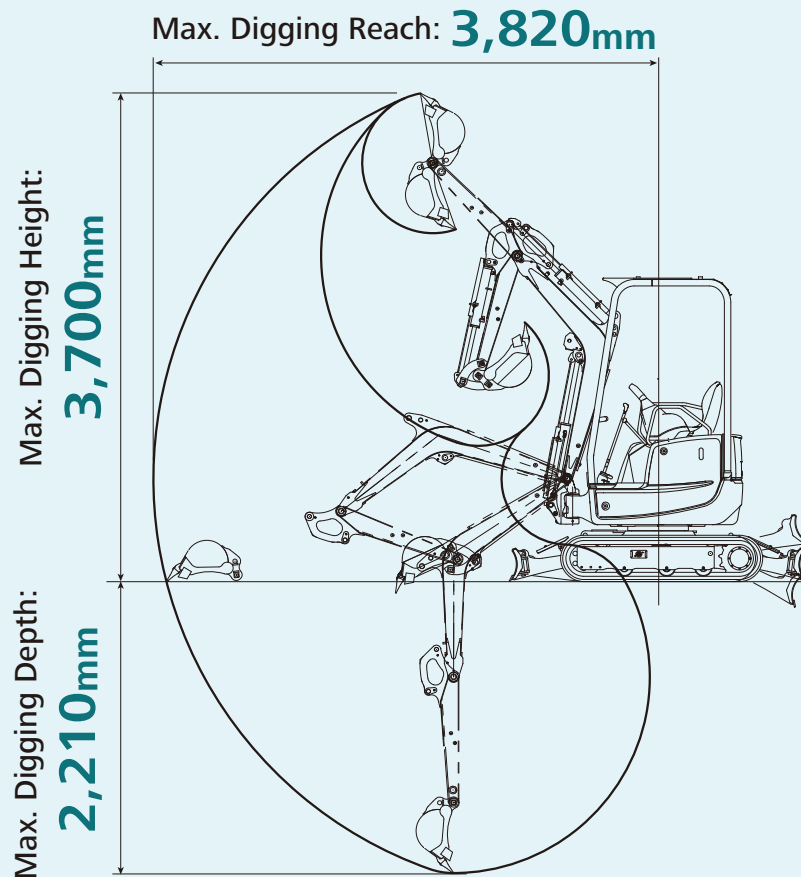
Self-cleaning/Retractable Crawler Frames

The hydraulic retractable side frames are strong and durable, as well as self cleaning.



Wide Working Range

The SK17SR has plenty of working ranges, including top-class max. digging reach and max. digging depth.



Reliable Swing Power, Faster Working Speeds

Boosted swing power and a top-class swing speed deliver shorter cycle times.

Swing Speed: **9.5min⁻¹**

Powerful Digging

For more efficient work performance.

Max. Bucket Digging Force: **15.2kN**

Easy Extended/Retracted Blade

Dozer blade with pin-type hinge can be easily extended/retracted.



Comfortable Work Environment

The large floor space gives operators plenty of foot room. Wide operational space is provided with more room between the left and right control consoles.

Pass-through

A clear left-to-right pass-through offers greater convenience for the operator.



Storage Compartment for Manuals

A handy compartment in the seat-back holds manuals and other documents.



Easy Access to Control Panel and Levers



Control panel



Engine throttle lever



Crawler retract/extension lever



Travel high/low select pedal

Operator Safety

Wrist Rest



Wrist rests fitted on each control lever box ensure fatigue-free operation.

Travel Pedal



The travel pedal simplifies simultaneous operations while the machine is traveling.

Reliable Canopy Structure

The four-support canopy meets ROPS and FOPS standards for greater operator safety.



Safety Lever Lock



Safety lever lock permits enter and exit only when the levers are disengaged to prevent accidental operation.

Travel Alarm

Travel Alarm is equipped as standard.



Easy Maintenance

Easier maintenance, with a fully-opening engine hood and equipment that requires the most frequent checks positioned to be readily visible.

Easy Access to Component (Left)



Cartridge type return filter



Oil level gauge



Battery

Easy Access to Cooling Unit



Radiator

Hose separation



Separation of hoses makes replacement work easier.

Easy Access to Engine Compartment (Rear)



Fuel filter

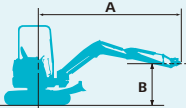


Water separator



Air cleaner

LIFT CAPACITIES



Rating over front

Rating over side or 360 degrees

A: Reach from swing centerline to arm top
B: Arm top height above/below ground
C: Lift point
Shoe: Rubber shoe Dozer blade: Up
Relief valve setting: 20.6 MPa

Notes:

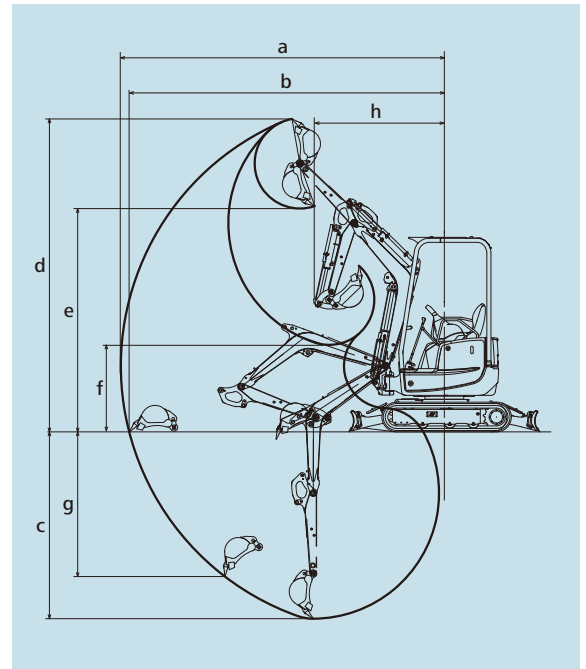
- Do not attempt to lift or hold any load that is greater than these lift capacities at their specified lift point radius and heights. Weight of all accessories must be deducted from the above lift capacities.
- Lift capacities are based on machine standing on level, firm, and uniform ground. User must make allowance for job conditions such as soft or uneven ground, out of level conditions, side loads, sudden stopping of loads, hazardous conditions, experience of personnel, etc.
- Arm top defined as lift point.
- The above lift capacities are in compliance with ISO 10567. They do not exceed 87% of hydraulic lift capacity or 75% of tipping load. Lift capacities marked with an asterisk (*) are limited by hydraulic capacity rather than tipping load.
- Operator should be fully acquainted with the Operator's and Maintenance Instructions before operating this machine. Rules for safe operation of equipment should be adhered to at all times.
- Lift capacities apply to only machine as originally manufactured and normally equipped by KOBELCO CONSTRUCTION MACHINERY CO., LTD.

SK17SR		Bucket: without Shoe: 230 mm							
B	A	At Min. Reach		2.0 m		2.5 m		At Max. Reach	
2.0 m	kg					*330	*320	230	240
1.5 m	kg			*420	*430	*350	300	210	210
1.0 m	kg	540	530	410	410	300	300	200	200
0.5 m	kg	500	500	390	410	280	300	190	200
G. L.	kg	610	600	380	390	280	290	200	200
-0.5 m	kg			360	370	270	280	220	220
-1.0 m	kg			370	390	270	290	270	270

SPECIFICATIONS

GENERAL			
MODEL		SK17SR	
Type		SK17SR-6D	
PERFORMANCE			
Bucket Capacity		m³	0.04
Travel Speed (high/low)		km/h	3.7/1.9
Swing Speed		min ⁻¹ {rpm}	9.5
Arm Length		m	0.95
Bucket Digging Force		kN	15.2
WEIGHT			
Machine Mass		kg	1,870
Ground Pressure		kPa	30.3
Shoe Type			Steel
ENGINE			
Model		Yanmar 3TNV70-XBV	
Type		Water cooled, 4-cycle, 3-cylinder	
Power Output NET	(ISO 9249)	kW/min ⁻¹ (rpm)	10.1/2,200
Displacement		L	0.854
Fuel Tank		L	20
HYDRAULIC SYSTEM			
Pump		Two variable displacement pumps + two gear pumps (one for pilot pump)	
Max. Discharge Flow		L/min	2 × 17.6, 1 × 13.2, 1 × 7.9
Relief Valve Setting		MPa	2 × 20.6, 1 × 16.7, 1 × 2.9
Hydraulic Oil Tank (system)		L	16.5 (26)
DOZER BLADE			
Width x Height		mm	950/1,280 x 250
SIDE DIGGING MECHANISM			
Type		Boom swing	
Offset Angle	To the left	degree	41
	To the right	degree	65

WORKING RANGES

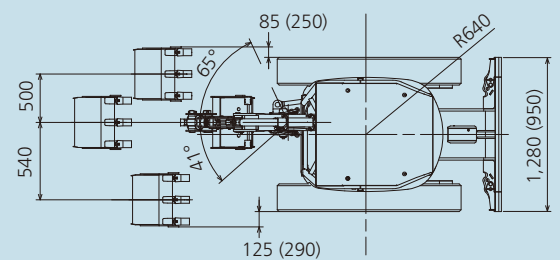
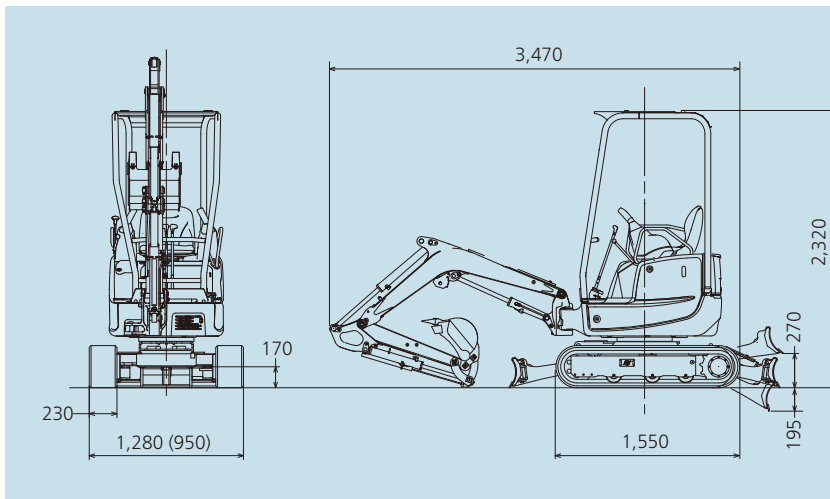


Unit: mm

MODEL	SK17SR
a- Max. digging reach	3,820
b- Max. digging reach at ground level	3,720
c- Max. digging depth	2,210
d- Max. digging height	3,700
e- Max. dumping clearance	2,620
f- Min. dumping clearance	1,020
g- Max. vertical wall digging depth	1,790
h- Min. swing radius (at boom swing)	1,540 (1,390)

GENERAL DIMENSIONS

Unit: mm



Figures in () show the value at crawler retracted.

SHOE Standard equipment Steel shoe
Optional equipment Rubber track

Note: This catalog may contain attachments and optional equipment that are not available in your area. And it may contain photographs of machines with specifications that differ from those of machines sold in your areas. Please consult your nearest KOBELCO distributor for those items you require. Due to our policy of continuous product improvements all designs and specifications are subject to change without advance notice. Copyright by **KOBELCO CONSTRUCTION MACHINERY CO., LTD.** No part of this catalog may be reproduced in any manner without notice.

KOBELCO CONSTRUCTION MACHINERY CO., LTD.

5-15, Kitashinagawa 5-chome, Shinagawa-ku, Tokyo 141-8626 JAPAN
Tel: +81 (0) 3-5789-2146 Fax: +81 (0) 3-5789-2135
www.kobelcocm-global.com

Inquiries To: