

KOBELCO

SK210_{LC}

■ 50 ft

Max. Digging Reach: 15,820 mm Digging Depth: 12,010 mm

■ 60 ft

Max. Digging Reach: 18,180 mm Digging Depth: 14,110 mm

SK260_{LC}

■ 60 ft

Max. Digging Reach: 18,530 mm Digging Depth: 14,730 mm

LONG REACH ATTACHMENT

Reaches Further and Deeper with Smooth, Stable Power

- Ideally suited to dredging, leveling, and other long reach operations.
- Extra-long crawlers ensure stability.
- Fuel-efficient diesel engine provides plenty of digging power.

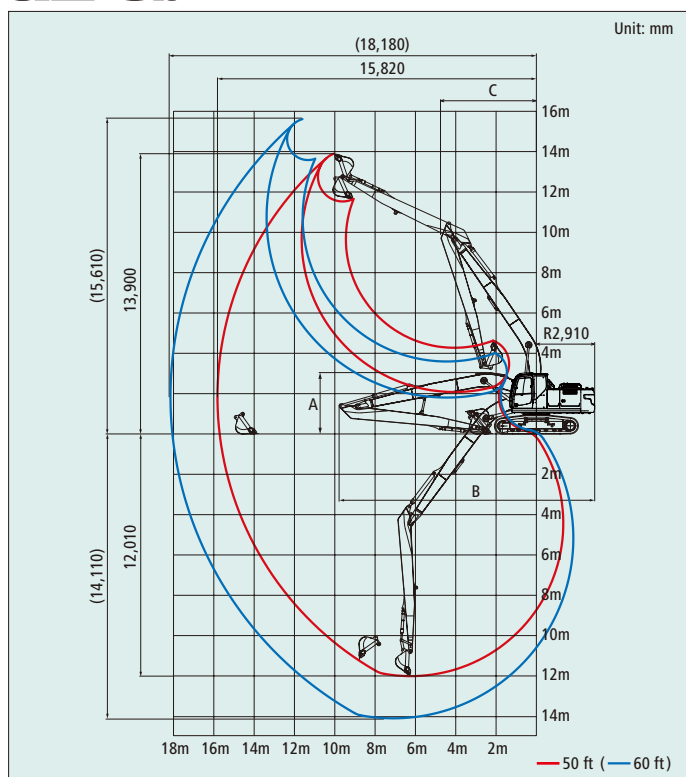


We Save You Fuel
Achieving a Low-Carbon Society

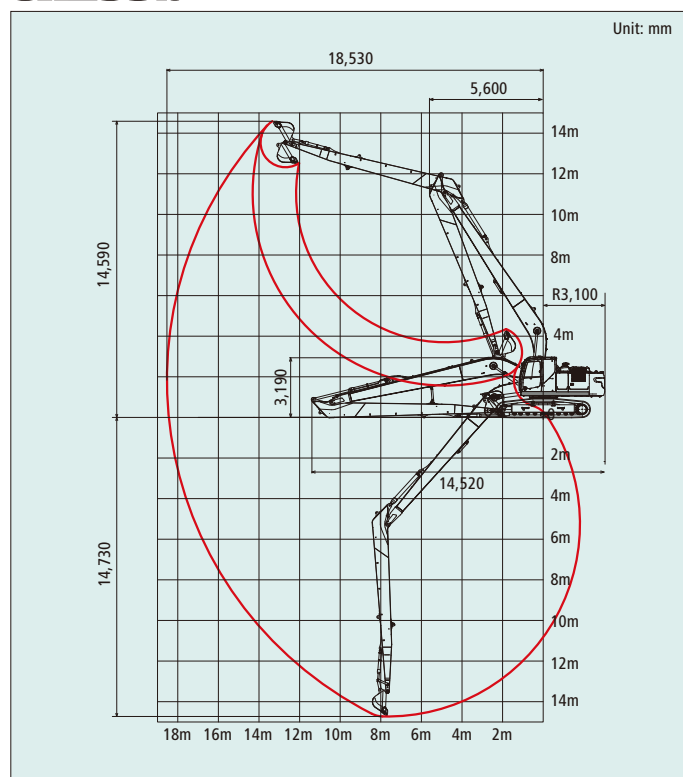
LONG REACH ATTACHMENT

WORKING RANGES

SK210_{LC}



SK260_{LC}



MAIN SPECIFICATIONS

| Model | SK210LC | | | | SK260LC | | |
|----------------------------|-------------------|---------|--------|---------|------------|---------|--------|
| | SK210LC-10 | | | | SK260LC-10 | | |
| Type | 50 ft | | | | 60 ft | | |
| Long reach attachment | 50 ft | | | | 60 ft | | |
| Bucket capacity ISO heaped | m ³ | 0.45 | | 0.27 | | 0.4 | |
| Shoe width | mm | 600 | 800 | 600 | 800 | 600 | 800 |
| Operating weight | kg | 22,800 | 23,400 | 24,200 | 24,900 | 27,000 | 27,600 |
| Ground pressure | kPa | 47 | 37 | 50 | 39 | 53 | 41 |
| Swing speed | min ⁻¹ | 13.3 | | 7.0 | | 10.8 | |
| Travel speed | km/h | 6.0/3.6 | | 6.0/3.6 | | 6.1/3.8 | |
| Gradeability | % (°) | 70 (35) | | 70 (35) | | 70 (35) | |
| Boom length | mm | 8,750 | | 9,900 | | 10,350 | |
| Arm length | mm | 6,350 | | 7,900 | | 8,250 | |
| Overall height (A) | mm | 3,120 | | 3,190 | | 3,190 | |
| Overall length (B) | mm | 12,690 | | 13,860 | | 14,520 | |
| Min. swing radius (C) | mm | 4,720 | | 5,170 | | 5,600 | |

Note: This catalog may contain attachments and optional equipment that are not available in your area. And it may contain photographs of machines with specifications that differ from those of machines sold in your areas. Please consult your nearest KOBELCO distributor for those items you require. Due to our policy of continuous product improvements all designs and specifications are subject to change without advance notice. Copyright by **KOBELCO CONSTRUCTION MACHINERY CO., LTD.** No part of this catalog may be reproduced in any manner without notice.

KOBELCO CONSTRUCTION MACHINERY CO., LTD.

5-15 kitashinagawa 5-chome, Shinagawa-ku, Tokyo 141-8626 JAPAN
Tel: +81 (0) 3-5789-2146 Fax: +81 (0) 3-5789-2135
www.kobelco-kenki.co.jp/english_index.html

Inquiries To: