

High production promises sales and profits

The largest bucket capacity in its class

The bucket size is extremely important to ensure work efficiency in coal mining. The SK480LC has the largest bucket in its class, 3.2 m³, which significantly increases the productivity. This improves the work efficiency, enabling increased sales and profits.

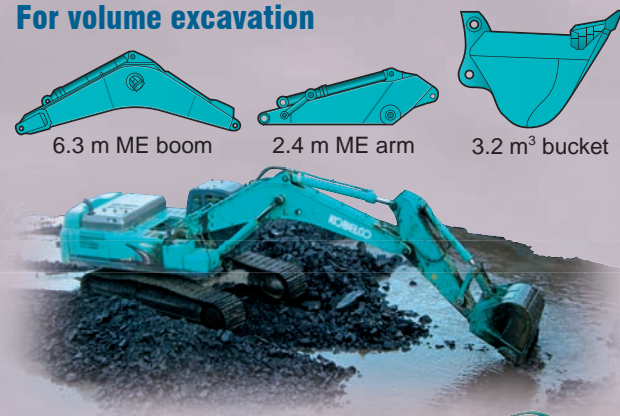


3.2 m³
the largest in its class

Attachments optimizing volume excavation

KOBELCO offers the following standard attachments for volume excavation.

For volume excavation

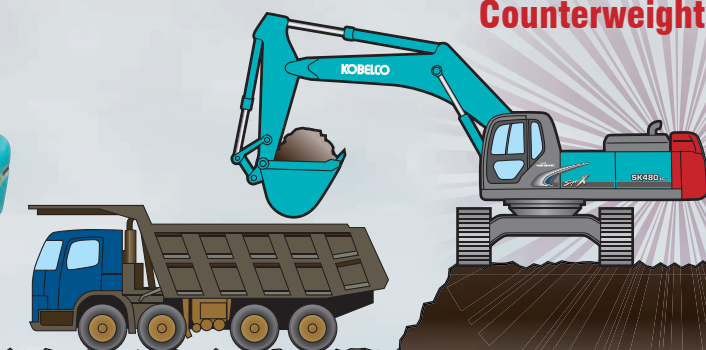


Stability that attains the maximum attachment performance

Ensuring machine stability is essential to secure production in coal mining. Equipped with a standard 12.5-ton counterweight, the SK480LC is stable even when dealing with high volume excavation. This also contributes to an increase in production.



Standard feature of
12.5-ton
Counterweight



The highest level of drawbar pulling force in its class

Coal mines are often in mountainous regions. To ensure work efficiency, high drawbar pulling force is indispensable for running on hilly slopes in mountains or benched slopes at sites. Capable of developing a drawbar pulling force of 417 kN - the highest in its class - the KOBELCO SK480LC provides excellent maneuverability and increased efficiency.

417 kN
the highest in its class

Fuel consumption

Good economy
with low fuel consumption

The best fuel consumption in its class

Combining the KOBELCO hydraulic system with Hino diesel engines brings about the best fuel consumption level in its class. Hino's electronically controlled, ultra-high pressure fuel injection technology, known as common-rail, dramatically improves engine performance. It is coupled with optimum control technology for construction machinery to significantly contribute to improving fuel consumption. Furthermore, enhanced cooling performance and a strengthened structure make the equipment more durable. All these improvements help reduce fuel consumption at sites such as coal mines where the equipment has to operate for extremely long hours, enabling significantly reduced running costs.

Amazing productivity with a 18 % increase in work volume and "Top-class" cost-performance



↑ Work volume*
18% increase in work volume using the same amount of fuel. (H-mode)



↓ Fuel consumption*
18% decrease in fuel consumption even when performing more work volume. (S-mode)

*The value shows results from actual measurements taken by KOBELCO when compared with previous KOBELCO models.

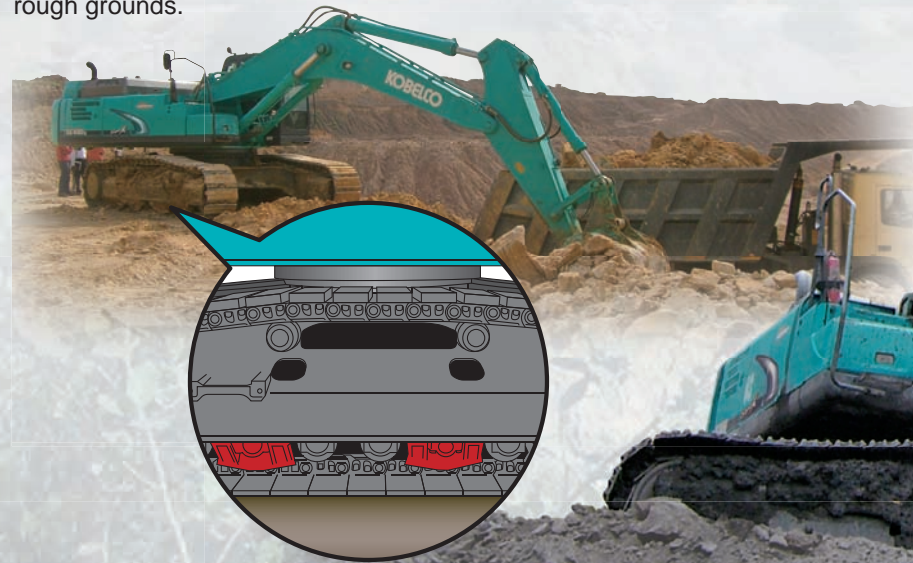
Excellent durability for severe working environments

Coal mining is challenging as hydraulic excavators have to operate in a severe environment with dusty air, high ambient temperatures and rough ground with stones and rocks. KOBELCO machines have the optimum specifications for such harsh environments.

Best design for maneuvering on rough grounds

Sturdy track guides to keep the tracks in place

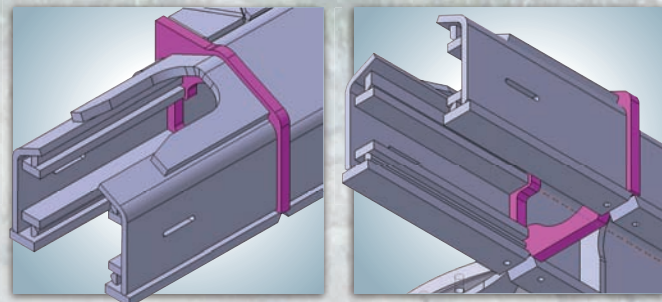
The KOBELCO SK480LC has four track guides that prevent de-tracking on rough grounds.



Strengthened HD frame

Reinforced lower frames

Inside of the idler, these are reinforced in the SK480LC.



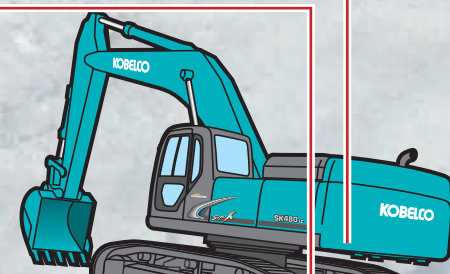
9 mm gage lower undercover



Heavy-Duty undercover

The sturdy 6 mm gage upper undercover and 9 mm gage lower undercover protect critical items such as the engine, hydraulic components and swivel joints, avoiding damage to the machine.

6 mm gage upper undercover



Track guide

Monitor display

HD frame

Filtration

Emergency acceleration dial

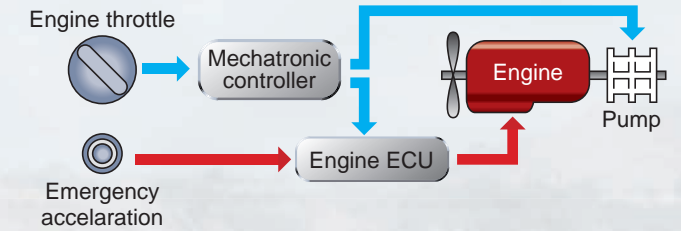
Pre-air cleaner

Countermeasures against electrical system failure

Emergency acceleration dial



If unexpected trouble is experienced with the ITCS mechatronic control system, the machine can still be operated using the emergency acceleration system. Digging modes are also automatically relayed to an emergency system so that digging can continue temporarily until a service person arrives to repair the primary system.



Monitor display of electrical system malfunctions



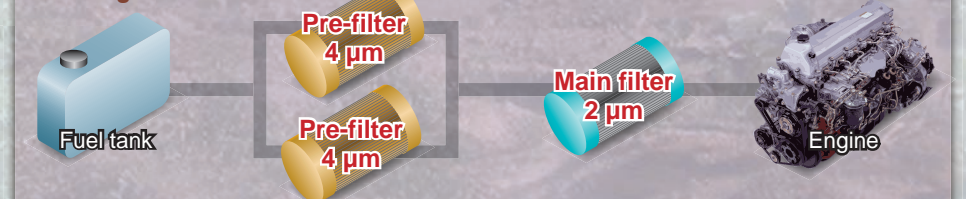
- Self-diagnostic function that provides early-warning detection and display of electrical system malfunctions.
- Record previous breakdowns, including irregular and transient malfunctions.
- Displays only the maintenance information that's needed, when it's needed.

Improved intake and fuel systems

Filtration system for cleaner fuel

To prevent engine problems, two 4 µm pre-filters and a 2 µm main filter clean poor quality fuel or fuel contaminated with foreign matter.

Existing model



Pre-air cleaner to protect engine (Option)

Since a great deal of dust is present in the air at sites due to mining operations and dumper trucks moving around, an optional pre-air cleaner is available to prevent dust from entering the air intake vent.

