

SPECIFICATIONS

Performance	
Bucket capacity	3.2 m ³ (SAE heaped)
Travel speed	5.4/3.4 km/h
Swing speed	7.8 min ⁻¹
Gradeability	70% (35 deg.)
Drawbar pulling force	417 kN (SAE J1309 MAY91)
Weight	
Operating weight	51,200 kg
Ground pressure	82 kPa
Engine	
Maker	HINO Motors, Ltd.
Model	PC11C-UP
Type	Water-cooled, 4 cycle 6 cylinder direct injection type diesel engine with intercooler turbo-charger
Rated power output	257 kW {350 PS}/1,850 min ⁻¹ {rpm} (ISO 14396 : 2002) 243 kW {333 PS}/1,850 min ⁻¹ {rpm} (ISO 9249 : 2007)*
Max. torque	1,400 N·m/1,400 min ⁻¹ {rpm} (ISO 14396 : 2002) 1,359 N·m/1,400 min ⁻¹ {rpm} (ISO 9249 : 2007)*
Displacement	10.52 L
Fuel tank	650 L

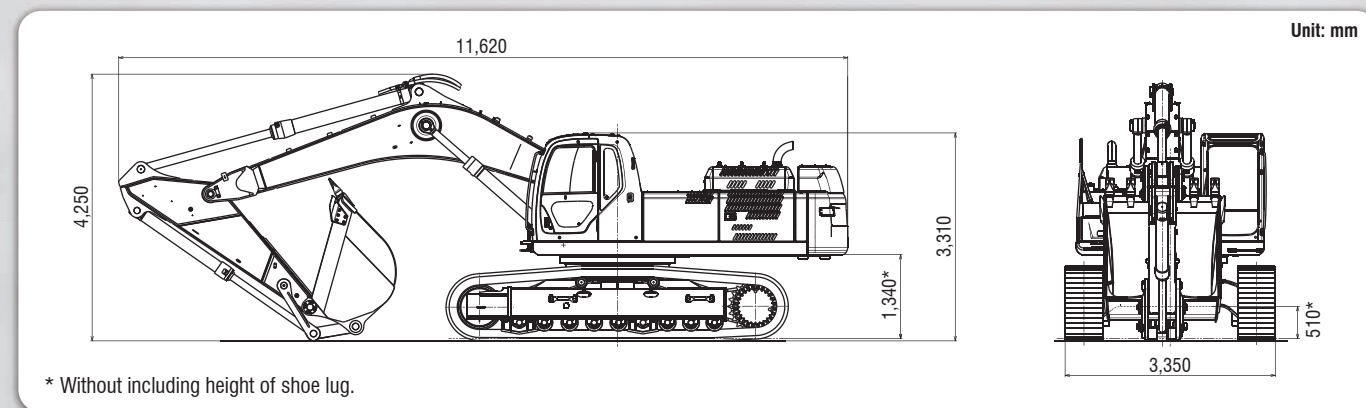
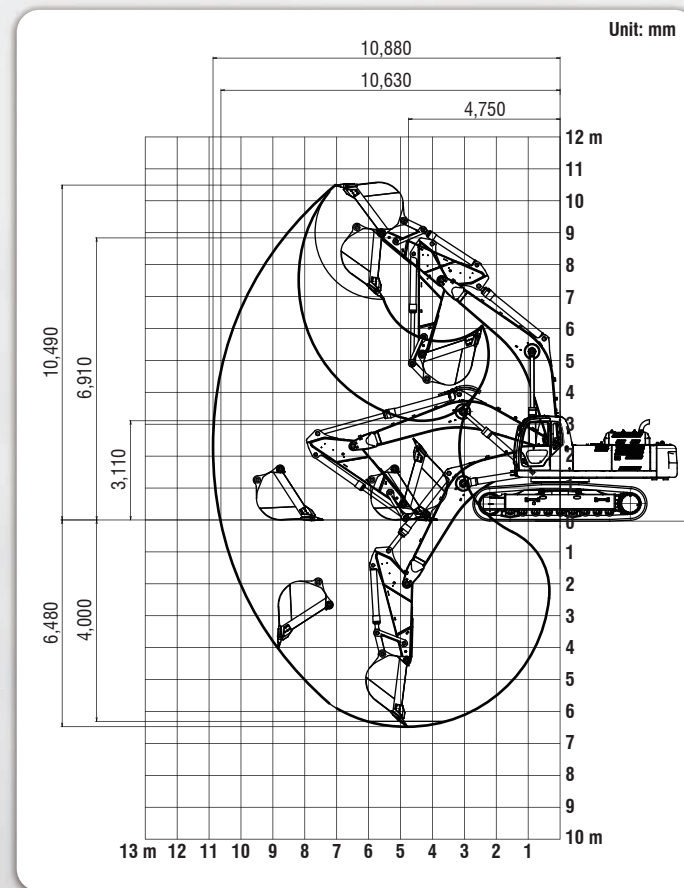
* Previous indication

DIGGING FORCE

Boom and arm length	ME 6.3 m + ME 2.4 m
Bucket digging force	279 kN 305 kN*
Arm digging force	247 kN 270 kN*

* Power Boost engaged.

WORKING RANGES



Note: This catalog may contain attachments and optional equipment that are not available in your area. And it may contain photographs of machines with specifications that differ from those of machines sold in your areas. Please consult your nearest KOBELCO distributor for those items you require. Due to our policy of continuous product improvements all designs and specifications are subject to change without advance notice.
Copyright by **KOBELCO CONSTRUCTION MACHINERY CO., LTD.** No part of this catalog may reproduce in any manner without notice.

KOBELCO CONSTRUCTION MACHINERY CO., LTD.

17-1, Higashigotanda 2-chome, Shinagawa-ku, Tokyo 141-8626 JAPAN
Tel: +81 (0) 3-5789-2146 Fax: +81 (0) 3-5789-2135
www.kobelco-kenki.co.jp/english_index.html

Inquiries To:

Hydraulic Excavators

ACERA
GEOSPEC

Super X

SK480_{LC}
for Coal Mining



Golden road to successful coal mining.



Background to developing coal mining specifications

- As newly emerging economies are booming and developing, natural resources development is of growing importance.
- Accounting for 25% of the total energy demand, coal is a precious energy source.
- Coal is essential not only as a fuel for electric power generation and transport but also as a raw material indispensable for the steel purification process.
- As intensive development of coal mines continues worldwide, the industry is in need of hydraulic excavators that meet coal mining requirements.

Mechanical requirements for coal mining

High Productivity

Production

- Bucket capacity
- Attachment
- Stability
- Drawbar pulling force

Economy

- Fuel consumption

Durability

- Track guide
- HD frame
- Emergency acceleration dial
- Monitor display
- Filtration
- Pre-air cleaner

ACERA GEOSPEC ACERA GEOSPEC

The "GEO" in GEOSPEC expresses our deep respect for our planet, and for the solid ground where excavators are in their element. This is accompanied by SPEC, which refers to the performance specifications needed to get the job done efficiently as we carry on the tradition of the urban-friendly ACERA series.