

Hydraulic Excavators

ACERA
GEOSPEC

Super X

LONG REACH ATTACHMENT

SK210_{LC}

SK210LC-8

Max. Working Radius: 15,820 mm
Digging Depth: 12,010 mm

SK260_{LC}

SK260LC-8

Max. Working Radius: 18,530 mm
Digging Depth: 14,730 mm



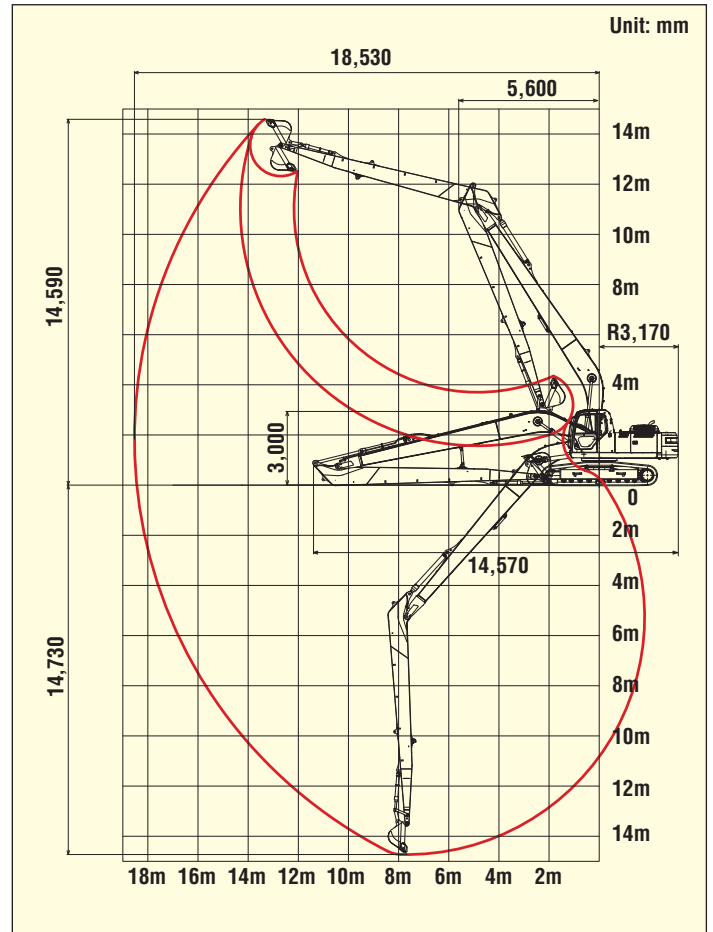
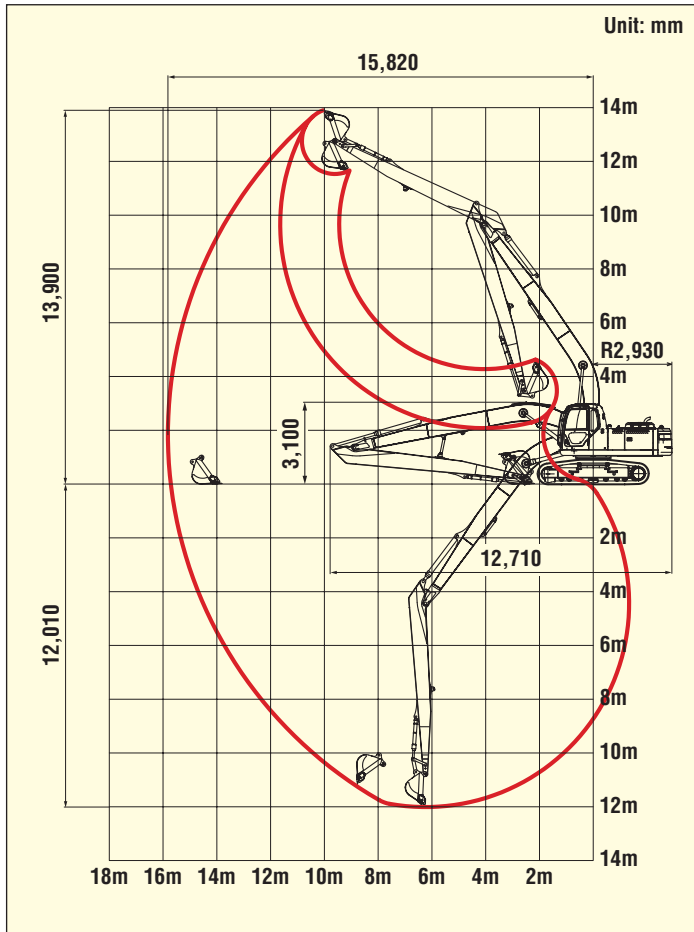
Photo shows composite image.
Actual machine may differ in some details.

Reaches Further and Deeper with Smooth, Stable Power

- Ideally suited to dredging, leveling, and other long reach operations.
- Extra-long crawlers ensure stability.
- Fuel-efficient diesel engine provides plenty of digging power.
- Amazing productivity with a 20% decrease in fuel consumption.
- High-tensile strength steel components assure reliable, durable services.

LONG REACH ATTACHMENT

Working Ranges



Main Specifications

Model		ACERA GEOSPEC SUPER SK210LC	ACERA GEOSPEC SUPER SK260LC
Type		SK210LC-8	SK260LC-8
Long reach attachment	m ³	50 ft (15.1 m = 8.75 m Boom + 6.35 m Arm)	60 ft (18.6 m = 10.35 m Boom + 8.25 m Arm)
Bucket capacity ISO heaped	m ³	0.45	0.40
Operating weight	kg	23,000	27,200
Ground pressure	kPa {kgf/cm ² }	36 {0.36}	40 {0.41}
Swing speed	min ⁻¹ {rpm}	12.5 {12.5}	11.0 {11.0}
Travel speed	km/h	6.0 / 3.6	5.8 / 3.6
Gradeability	% (°)	70 (35)	70 (35)
Boom length	mm	8,750	10,350
Arm length	mm	6,350	8,250
Max. digging reach	mm	15,820	18,530
Max. digging height	mm	13,900	14,590
Max. digging depth	mm	12,010	14,730
Shoe width	mm	800	800
Overall height	mm	3,100	3,000
Overall length	mm	12,710	14,570

KOBELCO CONSTRUCTION MACHINERY CO., LTD.

17-1, Higashigotanda 2-chome, Shinagawa-ku, Tokyo 141-8626 JAPAN
 Tel: +81(0) 3-5789-2146 Fax: +81(0) 3-5789-2135
www.kobelco-kenki.co.jp/english_index.html

Inquiries To: