

KOBELCO

SK380XDL-10

SK380XD_{LC}



Power Meets Efficiency

In line with KOBELCO's concept of earth-friendly construction machinery that will work long and hard on any site on the planet, the rugged machine body is newly designed, and comprehensive reinforcement makes the attachment more robust.

It all adds up to KOBELCO's toughest ever mining excavator. The latest hydraulics technology delivers both high-powered output and lower fuel consumption.

As the 10th generation model of KOBELCO's SK series, the SK380XDL meets the needs of the most punishing mining sites with a performance that simply astounds.





Increase in
productivity
means
"Power"

16%*
Higher fuel
saving means
"Efficiency"

*Compared to H-mode on the SK330-8

Even stronger attachment

Reinforced arm exhibits strength

Thick steel plate **NEW**



Arm top

Thickness of steel plate has been increased in preference to adding reinforcing plates.



Arm foot

Base plate thickness has been increased.

Modified Foot Boss Shape **NEW**



The arm foot boss shape has been modified and improved to distribute stress, delivering more strength for tasks like digging next to a wall.



Rock Guards

Specially designed long, solid rock guard installed to prevent damage to arm.



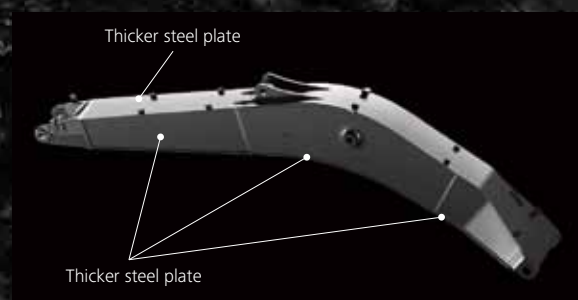


Increase in
productivity
means
"Power"

The boom and arm that take the
greatest punishment are
significantly reinforced.

Newly developed mining boom made of thicker steel plate

Featuring an XD Boom **NEW**



The XD boom features stronger plates compared to the HD booms of standard machines, which increases longevity even under the toughest working conditions.

Big cross-section boom **NEW**



Newly designed, big cross-section boom for unbeatable durability under harsh working conditions.

Side Deck Bumpers and Protective Guards that Cover the Main Upper Machinery

Side Deck Bumpers

Side deck bumpers are fitted to protect power plant and cab.



Upper Under Covers

Thick covers with increased durability compared to standard models.



Increase in productivity means "Power"

Powerful travel system for easy transit over loose stones, and highly reliable filtration system ensure higher machine performance.

Crawlers Built for Unbeatable Durability

Reinforced Guide Frame Track Guides



Reinforced guide frame prevents deformation caused by impact or encroaching of loose stones.



Large, reinforced track guides are installed in three locations.

Thicker steel plate for shoes



Reinforced HD shoes of thick steel plate to master rough, stony ground.

Reinforced Travel Motor Cover



Rear of travel motor cover is reinforced.

Lower Under Cover



Hydraulic piping and equipment protected against damage from rubble and stony ground.

Track Links



The size and durability of the track link are increased compared to standard models.

Double Grouser Shoe (Option)



The double grouser shoe consisting of a thick plate and having a strong grip force and sufficient strength is also selectable. This is proper for severe working conditions in mining sites.



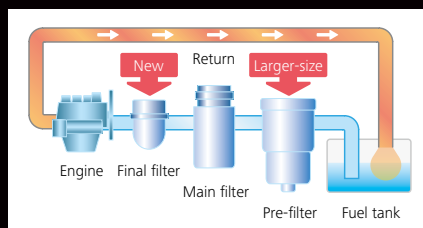
Improved Filtration System Reliability

Clean, contaminant-free fuel and hydraulic fluid are essential to stable performance.

The improved filtration systems reduce the risk of mechanical trouble and enhance longevity and durability.

Fuel Filter NEW

The pre-filter with built-in water separator has 1.8 times more filter area compared to the previous models and with a new final stage maintenance free fuel filter to maximize filtering performance.



Hydraulic Fluid Filter NEW

Recognized as the best in the industry, our Premium-fine filter separates out even the smallest particles. New cover prevents contamination when changing filters.



Metal Mesh Cover Air Cleaner NEW

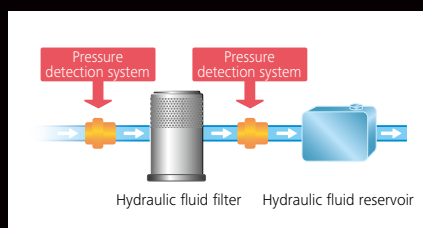
Metal mesh cover ensures strength and durability.



Enlarged filter image

Hydraulic Fluid Filter Clog Detector NEW

Hydraulic tank pressure sensor monitors the pressure difference between the return line and tank inside pressure to determine the degree of clogging. If the difference exceeds a predetermined level, a warning appears on the multi-display, so any contamination can be trapped by the filter and replaced before it reaches the hydraulic fluid in the tank.



Evolution Continues, with Improved Fuel Efficiency.

16%*
Higher fuel
saving means
"Efficiency"

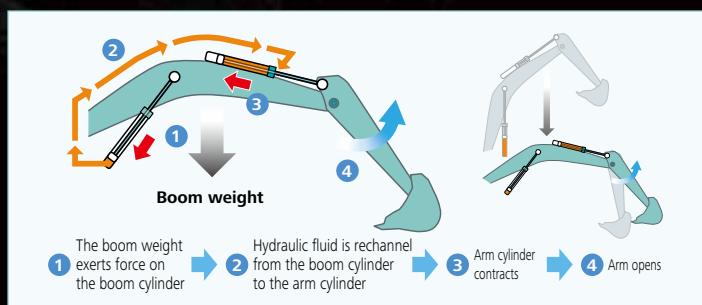
The new arm interflow system more efficiently controls hydraulic fluid flow, and significant reduction of in-line resistance and pressure loss boosts fuel efficiency by about 16%*.

* Compared to H-mode on the SK330-8

Hydraulic System: Revolutionary Technology Saves Fuel

Arm Interflow System **NEW**

When lowering the boom, this system uses the downward force generated by the boom's weight to push fluid to the shovel arm. This greatly reduces the need to apply power from outside the system.



Energy saving system saves fuel further

Fuel efficient work mode ECO mode **NEW**

The fuel-saving ECO mode is newly provided to the work mode, selectable according to a desired operation. Fuel consumption can be greatly reduced.



- E** Used to reduce fuel consumption for small workloads
ECO-mode, 24% decrease
(compared to S-mode on the SK330-8)
- H** Used to prioritize the amount of work done
H mode, 16% decrease
(compared to H-mode on the SK330-8)
- S** Used to strike a balance between workloads and fuel efficiency
S mode, 19% decrease
(compared to S-mode on the SK330-8)



Standard 2.6 m arm (reinforced for rocks)

■ Max. Bucket Digging Force

Normal: **229kN**

With power boost: **252kN**

■ Max. Arm Digging Force

Normal: **207kN**

With power boost: **228kN**

■ Max digging reach:

10,610mm

■ Max digging depth:

6,840mm

■ Max vertical digging depth:

5,700mm

Top Class Traveling Force

Powerful traveling force and drawbar pulling force deliver plenty of speed when climbing slopes or negotiating bad roads, and the agility to change direction swiftly and smoothly.

■ Drawbar Pulling Force: **331kN**



Comfortable Cab Is Now Safer than Ever.

A work environment that is quieter and more comfortable. A cab that puts the operator first is key to improved safety.

Large cab **NEW**

4 % larger than the previous cab capacity. Relaxing environment allows work to be performed in comfort.

Air Conditioner **NEW** Louvers behind the Seat



The large air-conditioner has louvers on the back pillars that blow from behind and to the right and left of the operator's seat. They can be adjusted to put a direct flow of cool/warm air on the operator, which means a more comfortable operating environment.

Super-Airtight Cab **NEW**



The high level of air-tightness keeps dust out of the cab.

Low Vibration **NEW**

Coil springs absorb small vibrations, and high suspension mounts filled with silicone oil reduce heavy vibration. The long stroke achieved by this system provides excellent protection from vibration.

Twice the stroke of a conventional mount



Multi-Display in Color **NEW**

Brilliant colors and graphic displays are easy to recognize on the LCD multi-display in the console. The display shows fuel consumption, maintenance intervals, and more.



- 1 Analog gauge provides an intuitive reading of fuel level and engine water temperature
- 2 Green indicator light shows low fuel consumption during operation
- 3 Fuel consumption/Switch indicator for rear camera images
- 4 Digging mode switch
- 5 Monitor display switch

One-Touch Attachment Mode Switch

A simple touch of a button, switches the hydraulic circuit and flow amount to match attachment changes. Icons help the operator to confirm the proper configuration at a glance.

Comfort



Broad View ^{NEW} Liberates the Operator

The front window features one large piece of glass without a center pillar on the right side for a wide, unobstructed view.

Large Cab Is Easy ^{NEW} to Get in and Out of

The expanded cab provides plenty of room for a large door, more headroom and smoother entry and exit.



+80mm

More Comfortable Seat Means Higher Productivity



Vibration absorbing suspension seat



Seat recliner can be pushed back flat



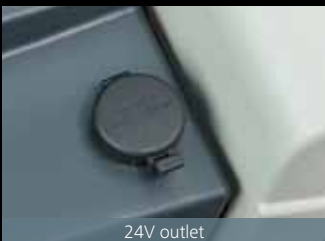
Double slides allow adjustment for optimum comfort

A Light Touch on the ^{NEW} Lever Means Smoother, Less Tiring Work

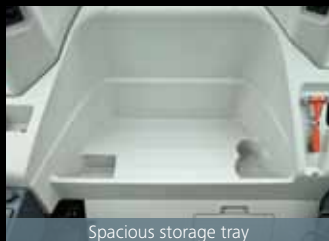


It takes 38% less effort to work the operation lever, which reduces fatigue over long working hours or continued operations.

Interior Equipment Adds to Comfort and Convenience



24V outlet



Spacious storage tray



Large cup holder

Safety

ROPS Cab ^{NEW}

ROPS (Roll-Over-Protective Structure)-compliant cab clears ISO standards (ISO-12117-2: 2008) and ensures greater safety for the operator should the machine tip over.



Improved ^{NEW} operational safety Cab Guard



The top guard (FOPS, Top Guard Level II. (Meets ISO10262)) provided as standard. The top-mounted working light ensures a wide field of view.

Wide view during ^{NEW} operations High Visibility for Safety



Greater safety assured by rearview mirrors on left and right.



Hammer for emergency exit



Swing flasher / Rear working light

* When fitted with 2.25 m super short arm and 800 mm triple grouser shoes, the cab is no longer ROPS-compliant.

Efficient Maintenance Keeps the Machine in Peak Operating Condition.



MAINTENANCE			
		8	5.4h
	INTERVAL	REMAINING TIME	EXCHANGE DAY
ENGINE OIL	250	248	--/--/--
FUEL FILTER	500	496	--/--/--
HYD. FILTER	1000	996	--/--/--
HYD. OIL	2000	1996	--/--/--

Examples of displaying maintenance information

Machine Information Display Function

- Displays only the maintenance information that's needed, when it's needed
- Self-diagnostic function provides early-warning detection and display of electrical system malfunctions
- Service-diagnostic function makes it easier to check the status of the machine
- Record function of previous breakdowns including irregular and transient malfunction

Easy, On-the-Spot Maintenance

There is ample space in the engine compartment for a mechanic to do maintenance work inside. The distance between steps is lower so entry and exit is easier. And the mechanic can work in comfort, without contortions or unnatural body positions. Finally, the hood is lighter and easier to raise and lower.



Generous space for maintenance work



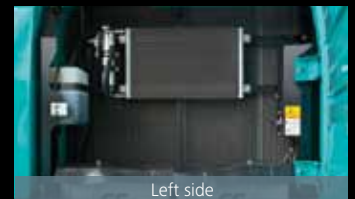
Step/Hand rail

Maintenance Work, Daily Checks, Etc., Can Be Done from Ground Level

The layout allows for easy access from the ground for many daily checks and regular maintenance tasks.

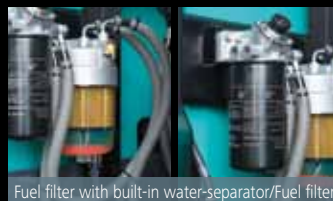


Double-element air cleaner

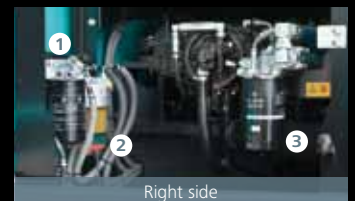


Left side

Simple layout for easy access to radiator and cooling system elements.



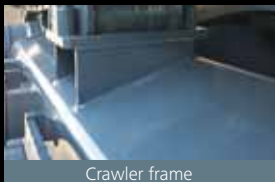
Fuel filter with built-in water-separator/Fuel filter



Right side

- 1 Fuel filter
- 2 Fuel filter with built-in water-separator
- 3 Engine oil filter

Easy Cleaning



Crawler frame

Special crawler frame design for easy mud removal cleaning.



Detachable two-piece floor mat

Detachable two-piece floor mat with handles for easy removal. A floor drain is located under floor mat.



Floor mat with raised edges

Floor mat's raised edges help keep the cab floor free of mud, simplify cleaning.



Engine oil pan

Engine oil pan equipped with drain valve.

More Efficient Maintenance Inside the Cab

Internal and external air conditioner filters can be easily removed without tools for cleaning.



Air conditioner filters

KOMEX

KOMEX is the remote monitoring system for SK series excavators. When a hydraulic excavator is fitted with this system, data on the machine's operation, such as operating hours, location, fuel consumption, and maintenance status can be obtained remotely.





Engine

Model	HINO J08E
Type	Direct injection, water-cooled, 4-cycle, 6-cylinder diesel engine with intercooler turbo-charger
No. of cylinders	6
Bore and stroke	112 mm X 130 mm
Displacement	7.684 L
Rated power output	188 kW/2,100 min ⁻¹ (ISO 9249) 200 kW/2,100 min ⁻¹ (ISO 14396)
Max. torque	969 N•m/1,600 min ⁻¹ (ISO 9249) 998 N•m/1,600 min ⁻¹ (ISO 14396)



Hydraulic System

Pump	
Type	Two Variable displacement piston pumps + one gear pump
Max. discharge flow	2 x 294 L/min, 1 x 21 L/min
Relief valve setting	
Boom, arm and bucket	34.3 MPa {350 kgf/cm ² }
Power Boost	37.8 MPa {385 kgf/cm ² }
Travel circuit	34.3 MPa {350 kgf/cm ² }
Swing circuit	29.0 MPa {296 kgf/cm ² }
Control circuit	5.0 MPa {50 kgf/cm ² }
Pilot control pump	Gear type
Main control valves	8-spool
Oil cooler	Air cooled type



Swing System

Swing motor	Axial-piston motor
Brake	Hydraulic; locking automatically when the swing control lever is in neutral position
Parking brake	Wet multiple plate
Swing speed	10 min ⁻¹ {rpm}
Tail swing radius	3,600 mm
Min. front swing radius	4,460 mm



Attachments

Backhoe bucket and arm combination (Reference only)

Use			Backhoe bucket	
			Normal digging	
Bucket capacity	ISO heaped	m ³	1.9	1.6
	ISO struck	m ³	1.45	1.2
Opening width	With side cutters	mm	1,740	1,470
	Without side cutters	mm	1,740	1,470
No. of bucket teeth			5	5
Bucket weight			2,070	1,570



Travel System

Travel motors	Variable displacement piston pump
Travel brakes	Hydraulic
Parking brakes	Wet multiple plate
Travel shoes	48 each side
Travel speed	5.6/3.3 km/h
Drawbar pulling force	331 kN (ISO 7464)
Gradeability	70 % {35°}



Cab & Control

Cab	
All-weather, sound-suppressed steel cab mounted on the high suspension mounts filled with silicone oil and equipped with a heavy, insulated floor mat.	
Control	
Two hand levers and two foot pedals for travel	
Two hand levers for excavating and swing	
Electric rotary-type engine throttle	



Boom, Arm & Bucket

Boom cylinders	140 mm x 1,550 mm
Arm cylinder	170 mm x 1,788 mm
Bucket cylinder	150 mm x 1,193 mm



Refilling Capacities & Lubrications

Fuel tank	503 L
Cooling system	35 L
Engine oil	28.5 L
Travel reduction gear	2 x 8.0 L
Swing reduction gear	7 L
Hydraulic oil tank	245 L tank oil level
	410 L hydraulic system



Working Ranges

Unit: m

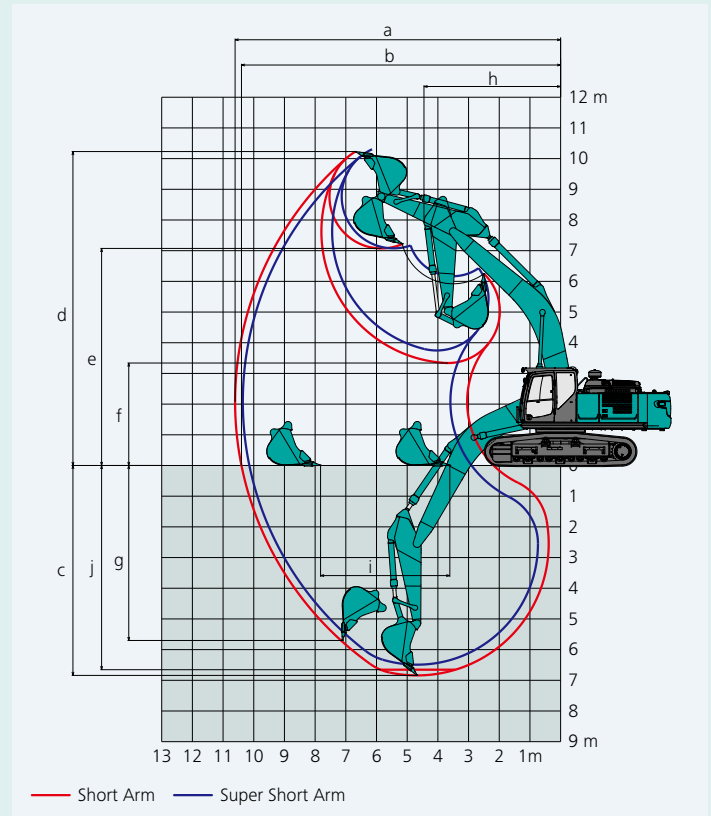
Boom	Arm	6.50m	
		Super short 2.25 m	Short 2.6 m
Range			
a- Max. digging reach		10.36	10.61
b- Max. digging reach at ground level		10.15	10.4
c- Max. digging depth		6.51	6.84
d- Max. digging height		10.29	10.23
e- Max. dumping clearance		7.06	7.07
f- Min. dumping clearance		3.73	3.34
g- Max. vertical wall digging depth		4.33	5.7
h- Min. swing radius		4.49	4.46
i- Horizontal digging stroke at ground level		3.39	4.21
j- Digging depth for 2.4 m (8') flat bottom		6.31	6.65
Bucket capacity ISO heaped m ³		1.9	1.9

Digging Force (ISO 6015)

Unit: kN

Arm length	Super short 2.25 m	Short 2.6 m
Bucket digging force	229 252*	229 252*
Arm crowding force	232 255*	207 228*

*Power Boost engaged.



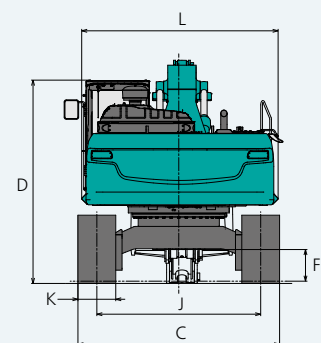
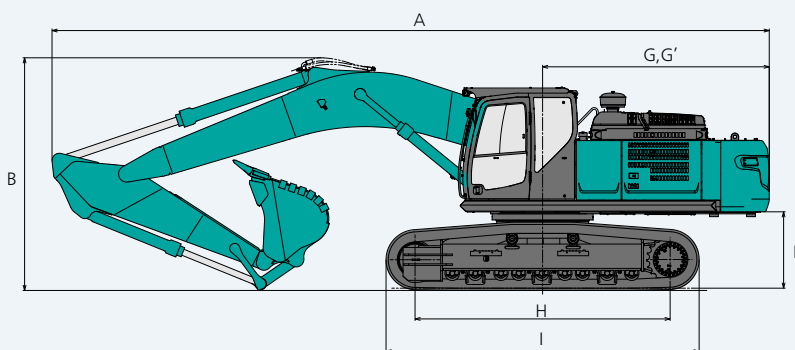
Dimensions

Unit: mm

Arm length	Super short 2.25 m	Short 2.6 m
A Overall length	11,510	11,380
B Overall height (to top of boom)	3,770	3,690
C Overall width	3,190	
D Overall height (to top of cab)	3,230	
E Ground clearance of rear end*	1,210	
F Ground clearance*	500	

G Tail swing radius	3,600
G' Distance from center of swing to rear end	3,600
H Tumbler distance	4,050
I Overall length of crawler	4,970
J Track gauge	2,590
K Shoe width	600
L Overall width of upperstructure	3,120

*Without including height of shoe



Operating Weight & Ground Pressure

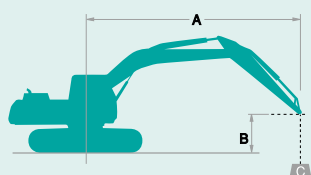
In standard trim, with standard boom, 2.6 m arm, and 1.9 m³ ISO heaped bucket

Shaped		Triple grouser shoes (even height)	
Shoe width	mm	600	800
Overall width	mm	3,200	3,400
Ground pressure	kPa	72	55
Operating weight	kg	38,500	39,100

* When fitted with 2.25 m super short arm and 800 mm triple grouser shoes, the cab is no longer ROPS-compliant.

Lifting Capacities

SK380XD^{LC}
SK380XDLC-10



Rating over front



Rating over side or 360 degrees

A: Reach from swing centerline to arm top
B: Arm top height above/below ground
C: Lifting capacities in Kilograms
Bucket: Without bucket
Relief valve setting: 34.3 MPa (350 kgf/cm²)

SK380XDLC Super Short Arm: 2.25 m Bucket: Without Shoe: 600 mm Counterweight: 7,890 kg											
A \ B		3.0 m		4.5 m		6.0 m		7.5 m		At Max. Reach	
7.5 m	kg					*8,480	*8,480			*8,430	*8,430
6.0 m	kg					*8,830	*8,830	*8,130	7,860	*8,120	7,480
4.5 m	kg					*9,760	*9,760	*8,390	7,650	*8,040	6,520
3.0 m	kg					*10,850	10,000	*8,880	7,370	*8,070	6,040
1.5 m	kg					*11,650	9,550	*9,290	7,120	*8,160	5,900
G.L.	kg					*11,880	9,330	*9,410	6,980	*8,260	6,060
-1.5 m	kg			*14,740	14,120	*11,450	9,320	*8,950	6,990	*8,320	6,610
-3.0 m	kg	*15,550	*15,550	*12,890	*12,890	*10,090	9,510			*8,170	7,870
-4.5 m	kg			*9,380	*9,380					*7,240	*7,240

SK380XDLC Super Short Arm: 2.25 m Bucket: Without Shoe: 800 mm Counterweight: 7,890 kg											
A \ B		3.0 m		4.5 m		6.0 m		7.5 m		At Max. Reach	
7.5 m	kg					*8,480	*8,480			*8,430	*8,430
6.0 m	kg					*8,830	*8,830	*8,130	7,960	*8,120	7,580
4.5 m	kg					*9,760	*9,760	*8,390	7,760	*8,040	6,610
3.0 m	kg					*10,850	10,140	*8,880	7,470	*8,070	6,130
1.5 m	kg					*11,650	9,690	*9,290	7,220	*8,160	5,990
LEVEL	kg					*11,880	9,480	*9,410	7,080	*8,260	6,150
-1.5 m	kg			*14,740	14,330	*11,450	9,460	*8,950	7,090	*8,320	6,710
-3.0 m	kg	*15,550	*15,550	*12,890	*12,890	*10,090	9,650			*8,170	7,990
-4.5 m	kg			*9,380	*9,380					*7,240	*7,240

SK380XDLC Short Arm: 2.60 m Bucket: Without Shoe: 600 mm Counterweight: 7,890 kg											
A \ B		3.0 m		4.5 m		6.0 m		7.5 m		At Max. Reach	
7.5 m	kg									*7,820	*7,820
6.0 m	kg					*8,360	*8,360	*7,670	*7,670	*7,600	7,050
4.5 m	kg			*12,020	*12,020	*9,330	*9,330	*8,030	7,640	*7,570	6,180
3.0 m	kg					*10,480	10,030	*8,580	7,330	*7,640	5,730
1.5 m	kg					*11,380	9,530	*9,060	7,060	*7,760	5,580
G.L.	kg			*15,850	13,890	*11,760	9,260	*9,280	6,880	*7,920	5,710
-1.5 m	kg			*15,040	13,940	*11,490	9,200	*9,020	6,850	*8,050	6,190
-3.0 m	kg	*16,970	*16,970	*13,400	*13,400	*10,390	9,330			*8,060	7,270
-4.5 m	kg	*12,820	*12,820	*10,360	*10,360					*7,570	*7,570

SK380XDLC Short Arm: 2.60 m Bucket: Without Shoe: 800 mm Counterweight: 7,890 kg											
A \ B		3.0 m		4.5 m		6.0 m		7.5 m		At Max. Reach	
7.5 m	kg									*7,820	*7,820
6.0 m	kg					*8,360	*8,360	*7,670	*7,670	*7,600	7,150
4.5 m	kg			*12,020	*12,020	*9,330	*9,330	*8,030	7,750	*7,570	6,270
3.0 m	kg					*10,480	10,170	*8,580	7,440	*7,640	5,820
1.5 m	kg					*11,380	9,670	*9,060	7,170	*7,760	5,670
G.L.	kg			*15,850	14,090	*11,760	9,400	*9,280	6,990	*7,920	5,800
-1.5 m	kg			*15,040	14,140	*11,490	9,340	*9,020	6,960	*8,050	6,280
-3.0 m	kg	*16,970	*16,970	*13,400	*13,400	*10,390	9,470			*8,060	7,380
-4.5 m	kg	*12,820	*12,820	*10,360	*10,360					*7,570	*7,570

Notes:

- Do not attempt to lift or hold any load that is greater than these lifting capacities at their specified lift point radius and heights. Weight of all accessories must be deducted from the above lifting capacities.
- Lifting capacities are based on machine standing on level, firm, and uniform ground. User must make allowance for job conditions such as soft or uneven ground, out of level conditions, side loads, sudden stopping of loads, hazardous conditions, experience of personnel, etc.
- Arm top pin is defined as lift point.
- The above lifting capacities are in compliance with ISO 10567. They do not exceed 87% of hydraulic lifting capacity or 75% of tipping load. Lifting capacities marked with an asterisk (*) are limited by hydraulic capacity rather than tipping load.
- Operator should be fully acquainted with the Operator's and Maintenance Instructions before operating this machine. Rules for safe operation of equipment should be adhered to at all times.
- Lifting capacities apply to only machine as originally manufactured and normally equipped by KOBELCO CONSTRUCTION MACHINERY CO., LTD.

STANDARD EQUIPMENT

ENGINE

- Engine, HINO J08E, diesel engine with turbocharger and intercooler
- Automatic engine deceleration
- Auto Idle Stop (AIS)
- Batteries (2 x 12V - 96Ah)
- Starting motor (24V - 5 kW), 60 amp alternator
- Automatic engine shut-down for low engine oil pressure
- Engine oil pan drain cock
- Double element air cleaner

CONTROL

- Working mode selector (H-mode, S-mode and ECO-mode)
- Power Boost

SWING SYSTEM & TRAVEL SYSTEM

- Swing rebound prevention system
- Straight propel system
- Two-speed travel with automatic shift down
- Sealed & lubricated track links
- Grease-type track adjusters
- 600mm HD triple grouser shoe
- Automatic swing brake
- Tow eyes

HYDRAULIC

- Boom regeneration system
- Auto warm up system
- Aluminum hydraulic oil cooler
- Arm interflow system
- Hydraulic fluid filter clog detector
- Refilling pump

MIRRORS, LIGHTS AND CAMERA

- Two rear view mirrors
- Six front working lights (Two for boom, one for boom cylinder, one for right storage box and two for cab)

- Rear view camera

CAB & CONTROL

- Two control levers, pilot-operated
- Horn, electric
- Cab light (interior)
- Luggage tray
- Large cup holder
- Detachable two-piece floor mat
- Headrest
- Handrails
- Intermittent windshield wiper with double-spray washer
- Skylight
- Tinted safety glass
- Pull-up type front window and removable lower front window
- Easy-to-read multi-display color monitor
- Automatic air conditioner
- Emergency escape hammer
- KOMEXS
- Suspension seat
- Two cab lights

OPTIONAL EQUIPMENT

- NGB Piping
- Rear view camera
- 800mm HD triple grouser shoe
- 600mm HD double grouser shoe

Note: Standard and optional equipment may vary. Consult your KOBELCO dealer for specifics.

Note: This catalog may contain attachments and optional equipment that are not available in your area. And it may contain photographs of machines with specifications that differ from those of machines sold in your areas. Please consult your nearest KOBELCO distributor for those items you require. Due to our policy of continuous product improvements all designs and specifications are subject to change without advance notice. Copyright by **KOBELCO CONSTRUCTION MACHINERY CO., LTD.** No part of this catalog may be reproduced in any manner without notice.

KOBELCO CONSTRUCTION MACHINERY CO., LTD.

5-15, Kitashinagawa 5-chome, Shinagawa-ku, Tokyo 141-8626 JAPAN
Tel: +81 (0) 3-5789-2146 Fax: +81 (0) 3-5789-2135
<https://www.kobelcocm-global.com/>

Inquiries To: