

KOBELCO

Hydraulic Crawler Crane

CK1200G-3HDO

Max. Lifting Capacity : 120 US Tons

Max. Crane Boom Length : 230 ft

Heavy Duty Oil Field Boom Length : 50 ft to 110 ft

Max. Fixed Jib Combination : 200 ft + 70 ft



CK1200G-3 HDO CONTENTS

2 SPECIFICATIONS

6 G-MODE

7 LOAD MOMENT INDICATOR (LMI)

8 WINCH PERFORMANCE DATA

9 SELF-ASSEMBLY PROCEDURE

10 COUNTERWEIGHT SELF REMOVAL DEVICE

CRANE BOOM/JIB

11 GENERAL DIMENSIONS

12 DIMENSIONS & WEIGHT

16 TRANSPORTATION PLAN

18 WORKING RANGES

21 BOOM AND JIB ARRANGEMENTS

22 SUPPLEMENTAL DATA FOR CRANE BOOM

23 LIFTING CHART FOR BOOM

24 SUPPLEMENTAL DATA FOR CRANE BOOM/JIB

25 LIFTING CHART FOR BOOM AND FIXED JIB

39 SUPPLEMENTAL DATA FOR CLAMSHELL

40 LIFTING CHART FOR CLAMSHELL

42 SUPPLEMENTAL DATA FOR BARGE

43 LIFTING CHART FOR BARGE

CK1200G-3 HDO SPECIFICATIONS

General Description



<i>Type</i>	Crawler mounted, Lattice boom, Hydraulic controlled
<i>Maximum lift capacity</i>	240,000 lbs (108,900 kg) @ 12' operating radius (50' boom)
<i>Basic boom length</i>	50' (15.2 m)
<i>Maximum boom length</i>	230' (70.1 m)
<i>HDO boom length</i>	50' to 110' (15.2 m to 33.5 m)
<i>Basic boom & jib length</i>	90' + 30' (27.4 m + 9.1 m)
<i>Maximum boom & jib length</i>	200' + 70' (61 m + 21.3 m)
<i>Working weight</i>	Approx. 272,000 lbs (123,300 kg)
<i>Ground bearing pressure</i>	Approx. 16.8 psi (115.8 kPa)
<i>Gradeability</i>	40%

Calculations to determine working weight, ground bearing pressure, and gradeability include the weight of the upper and lower works of the crane, counterweights, and carbody weights, 50' boom and hook block.

General Dimensions

<i>Height to top of gantry (lowered)</i>	11' 6" (3,500 mm)
<i>Width of upper machine w/operator's cab</i>	9' 10" (2,990 mm)*
<i>Radius of rear end (counterweights)</i>	15' 11" (4,860 mm)
<i>Counterweight ground clearance</i>	4' 2" (1,275 mm)
<i>Center of rotation to boom foot pin</i>	3' 7" (1,100 mm)
<i>Height from ground to boom foot pin</i>	7' 3" (2,200 mm)
<i>Height over gantry (raised)</i>	24' 2" (7,375 mm)
<i>Overall length of crawlers</i>	22' 3" (6,770 mm)
<i>Overall width of crawlers</i>	17' 5" (5,300 mm)
<i>Center to center, idler to sprocket</i>	19' (5,800 mm)
<i>Shoe width</i>	35" (900 mm)
<i>Ground clearance of body</i>	1' 6" (450 mm)

Working Speed

<i>Hoist line speed (front and rear drums)</i>	390 to 10 ft/min (120 to 3 m/min)
<i>Lowering line speed (front and rear drums)</i>	390 to 10 ft/min (120 to 3 m/min)
<i>Boom hoist line speed</i>	160 to 6.6 ft/min (48 to 2 m/min)
<i>Boom lowering line speed</i>	160 to 6.6 ft/min (48 to 2 m/min)
<i>Swing speed (max.)</i>	3.2 rpm (3.2 min ⁻¹)
<i>Travel speed (high/low)</i>	0.87/0.62 mph (1.4/1.0 km/h)

Line speed based on single line, no load, and first layer of rope on the drum.

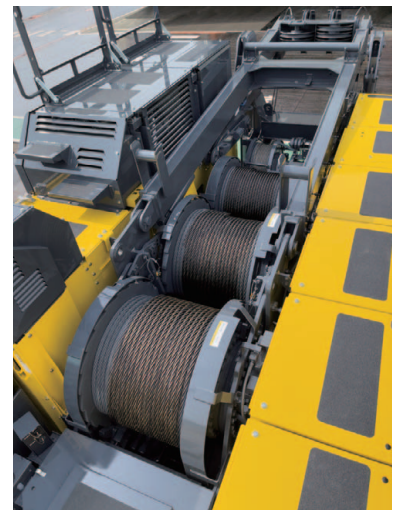
Upper Machinery

Power Plant :

Diesel engine - make and model

ISUZU 6HK1 (Tier 4 Final)

<i>No. of cylinders</i>	6
<i>Bore X stroke</i>	115 mm × 125 mm
<i>Cycles</i>	4
<i>Total displacement</i>	475 cu.in. (7.79 L)
<i>Rated output SAE GROSS</i>	281.6 HP / 1,900 rpm (210 kW / 1,900 min ⁻¹)
<i>Maximum torque</i>	796.6 lbs·ft / 1,500 rpm (1,080 N·m / 1,500 min ⁻¹)
<i>Starter</i>	24 Volts / 5.0 kW
<i>Alternator</i>	24 Volts / 90 Amp
<i>Batteries</i>	Two 12 volt, 136 AH/5 HR capacity series connected.
<i>Radiator</i>	Corrugated type core, thermostatically controlled, with cleanout screen.
<i>Throttle</i>	Twist grip type hand throttle, electrically controlled, in conjunction with floor mounted pedal.
<i>Air cleaner</i>	Dry type with replaceable paper element.
<i>Fuel tank capacity</i>	106 US gal. (400 L)
<i>Lube oil filters</i>	Full flow and by-pass type with element cartridge type.
<i>Fuel filter</i>	Replaceable cartridge element.



* 10'5" wide with step on cab side only.
11' wide with step on both sides.



Self Lifting Device - Standard Equipment

Counterweight and Carbody weight

Counterweight Base	1 × 25,600 lbs (11,600 kg)
Counterweight (R) (3),(5)	2 × 12,680 lbs (5,750 kg)
Counterweight (L) (2),(4)	2 × 12,680 lbs (5,750 kg)
Counterweight (R) (7)	1 × 7,610 lbs (3,450 kg)
Counterweight (L) (6)	1 × 7,610 lbs (3,450 kg)
Total Counterweight	91,540 lbs (41,500 kg)
Carbody weight	2 × 22,050 lbs (10,000 kg)
Total Carbody weight	44,100 lbs (20,003 kg)



Hydraulic system

Maximum pressure rating
4,626 psi (31.9 MPa)

Cooling
Oil to air heat exchanger

Filtration
Full flow filters with replaceable paper elements

Oil Quantity (at the reference level)
120.2 US gal. (455 L)

Hydraulic pumps :

Load hoist, boom hoist, and propel
2 piston pumps, max flow rate
67.2 US gal/min × 2 (254.7 L/min × 2)

Swing
1 piston pump, max flow rate
46.8 US gal/min (177.2 L/min)

Control system and auxiliary
2 gear pumps, max flow rate
18.7 US gal/min + 10.6 US gal (71.0 L/min + 40.5 L/min)

Brake cooling system
2 gear pumps, max flow rate
19.4 US gal/min × 2 (73.5 L/min × 2)

Gantry

This high folding type gantry is fitted with a sheave frame for boom reeving. Hydraulic lift is standard. It provides full up, full down positions with linkage.

Operator's cab

Totally enclosed from weather, this full-vision cab has safety glass all around. The adjustable, high-backed seat with armrest is capable of adjustment with or without the control console. Auxiliary controls and instruments are on a side mounted console. A signal horn, windshield wipers, air conditioner / heater, storage compartment for manuals, and swing limiter are all standard features.

Controls

At the operator's right are console-mounted short levers for the front and rear drum and the boom hoist control with individual drum speed dial adjust trimmer of front, rear, and boom drums. Fine inching control switch on boom hoist lever and LMI screen. Free fall activation switches are built in to the levers. Beside the seat on the right are two short levers for propel control. At the left is the console-mounted swing lever, an optional third drum control, switches for the front, rear, and boom drum pawls, and the engine start/stop key. A swing brake control switch and signal horn button are on the swing lever.

Swing :

Swing unit
Hydraulic motor driving spur gears through planetary reducers to output swing pinion for 360 degree rotation. There are three swing options : Free fast, free slow, and auto brake.

Swing brake
Spring set hydraulically released multiple disk brake mounted on swing motor.

Swing circle
Single row ball bearing with an integral internally cut swing gear.

Swing lock
Manual, 4 position lock for transportation.

CK1200G-3 HDO SPECIFICATIONS



Front drum :

Front and rear drums for load hoist powered by hydraulic variable plunger motors, driven through planetary reducers.

Negative brake

A spring-set, hydraulically released multiple disk brake is mounted on the hoist motor and operated through a counter-balance valve.

Drum lock External ratchet for locking drum

Drums :

Front drum (free fall) -

Max. line pull (single line) - 46,800 lbf (208 kN)

Rated line pull - 25,000 lbf (108 kN)

614 mm P.C.D. × 617 mm Lg., grooved for 26 mm wire rope. Rope capacity is 853' (260 m) working length and 1,185' (361.3 m) storage length.

Rear drum (free fall) -

Max. line pull (single line) - 46,800 lbf (208 kN)

Rated line pull - 25,000 lbf (108 kN)

614 mm P.C.D. × 617 mm Lg., grooved for 26 mm wire rope. Rope capacity is 755' (230 m) working length and 1,185' (361.3 m) storage length.

Third drum (optional) -

Max. line pull (single line) - 46,800 lbf (208 kN)

Rated line pull - 25,000 lbf (108 kN)

550 mm P.C.D. × 545 mm Lg., grooved for 26 mm wire rope. Rope capacity is 623' (190 m) working length and 986' (300.4 m) storage length.

Lower Machinery

Crawlers :

Crawler assemblies can be hydraulically extended or retracted for wide track operation or retracted for transportation. Crawler belt tension adjusted with hydraulic jack and maintained by shims between the idler block and frame.

Crawler drive :

The independent two speed hydraulic propel drive is built into each crawler side frame. Each drive consists of a hydraulic motor driving a propel sprocket through a planetary gear box. The hydraulic motor and gear box are built into the crawler side frame within the shoe width.

Crawler brakes :

Spring set, hydraulically released, multiple disk-type parking brakes are built into each propel drive.

Steering mechanism :

A hydraulic propel system provides both skid steering and counter rotating steering.

Crawler shoe :

63 shoes - 35" wide, each crawler.

Track rollers :

The track rollers are sealed for maintenance free operation.



Crane Attachments

Boom :

The welded lattice construction uses tubular, high-tension steel chords with pin connections between sections.

Maximum boom length	230' (70.1 m)
Basic boom length	50' (15.2 m)
Boom base section	25' (7.6 m)
Boom tip section	25' (7.6 m)

Boom insert (optional) :

Optional boom inserts are available to provide extension capabilities. They are robotic welded, laser aligned, lattice constructed with tubular, high-tension steel chords and pin connections.

Boom insert	10' (3.0 m), 20' (6.1 m), 40' (12.2 m)
-------------	--

Fixed jib (optional) :

Jib inserts are available to provide extension capabilities. The optional jib employs welded lattice construction with tubular, high-tension steel chords with pin connections between sections.

Maximum jib length	70' (21.3 m)
Basic jib length	30' (9.1 m)
Jib base section	15' (4.6 m)
Jib tip section	15' (4.6 m)
Jib insert	10' (3.0 m), 20' (6.1 m)

Jib is useable on booms of 90' (27.4 m) through 200' (61.0 m)



Auxiliary sheave (optional) :

Auxiliary sheave is extendible on booms of 50' (15.2 m) through 220' (67.1 m)
Maximum line : 2 parts of 26 mm wire rope.

Boom hoist reeving :

Ten (10) parts of 20 mm diameter high strength wire rope.

Boom backstops :

Telescopic type with spring bumper

Standard Equipment

Lights :

- Two (2) front flood lights
- One (1) cab inside light

Gauges and warning display :

Gauges

- One (1) tachometer
- One (1) hour meter
- One (1) fuel gauge
- One (1) water temperature
- One (1) DEF gauge

Warning display

- Battery charge
- Engine oil pressure
- Air cleaner
- Engine oil filter
- Control main pressure
- Hydraulic oil temperature
- Exhaust temperature

Others :

- Air conditioner / heater
- Drum turn indicator (front / rear)
- Foot pedal / throttle
- Electric fuel tank transfer pump
- Counterweight self-removal device
- KCROSS (Telematics)
- Free fall winches
- Translifters
- USB port in cab
- Radio with Bluetooth®
- Cigar lighter socket -
- 12 V auxiliary power outlet - in cab

Safety Service

- Function lock lever
- Boom over hoist limit switch
- Signal horn
- Front / rear hoist drum lock
- Swing limiter (Buzzer, lamps, or stops)
- Overload prevention device (LMI)
- Hook over hoist shut off (Anti-two-block)
- Boom angle indicator
- Travel alarm
- Lever indicator

Safety Service (cont)

- Boom hoist drum lock
- Swing locks, anti drift, and mechanical
- Boom backstops
- Boom base catwalk
- Upper machinery step, handrails and ladder

Tools and Accessories

A set of tools and manuals are furnished.

Optional Equipment

- Third drum with free fall
- Hook block
- Hook ball
- Auxiliary sheave
- Fixed jib
- Boom inserts

CK1200G-3 HDO

G-MODE

The G-Modes are a standard exclusive energy and fuel saving system. The G-Mode eliminates needless operations and engine functions allowing for reduced fuel consumption by using three basic modes that are all operator selectable.

Auto Idling Stop Mode (AIS) :

An Industry First

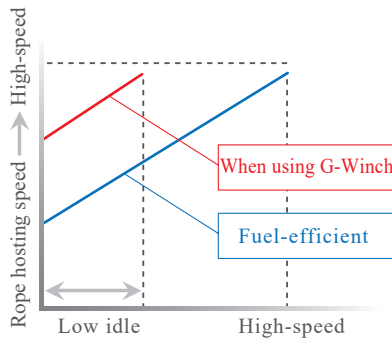
The AIS mode can conserve fuel by stopping the engine, with an operator prompt, after 10 seconds of idling time. Restarting the engine is simple by just twisting the throttle.



G-Winch Mode :

An Industry First

The G-Winch mode can produce maximum winch line speed at a low engine RPM.



The high speed mode allows the line to be raised or lowered at maximum line speed without raising engine speed when lifting without a load.

G-Engine Mode :

An Industry First

The G-Engine mode limits maximum engine speed to approx. 1,500 RPM and controls the pumps to make engine operation in the most efficient condition.



G-Winch



G-Engine



AIS



SCR System

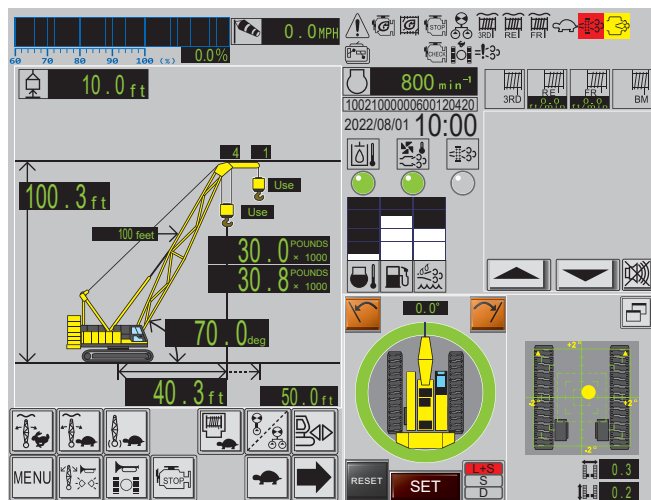
This machine is equipped with the SCR system. The SCR system is used to reduce emission of NOx (nitrogen oxide) from the engine. The SCR system decomposes NOx contained in exhaust gas into water and nitrogen by spraying DEF/ AdBlue® into the muffler. This means that the exhaust gas from the diesel engine is cleaner, conforming with current EPA Tier 4 Final regulations.

This system requires the use of low sulfur diesel.

*Warning : High sulfur diesel will damage the engine.

CK1200G-3 HDO LOAD MOMENT INDICATOR (LMI)

The KOBELCO designed 12" touch panel screen with sunshade and screen protector is an industry first. This intuitive and easy to understand new touch screen monitor gives the operator a full display of essential data. Universal pictograms are used providing easy visual recognition, making this new technology easy to read and understand the information. This new monitor includes : hook height, engine speed, display lamp of standard functions, gauges, over-swing prevention device, maximum load radius, switches, and error messages. Load charts include standard boom, fixed jib, reduced counterweight, clamshell, barge.

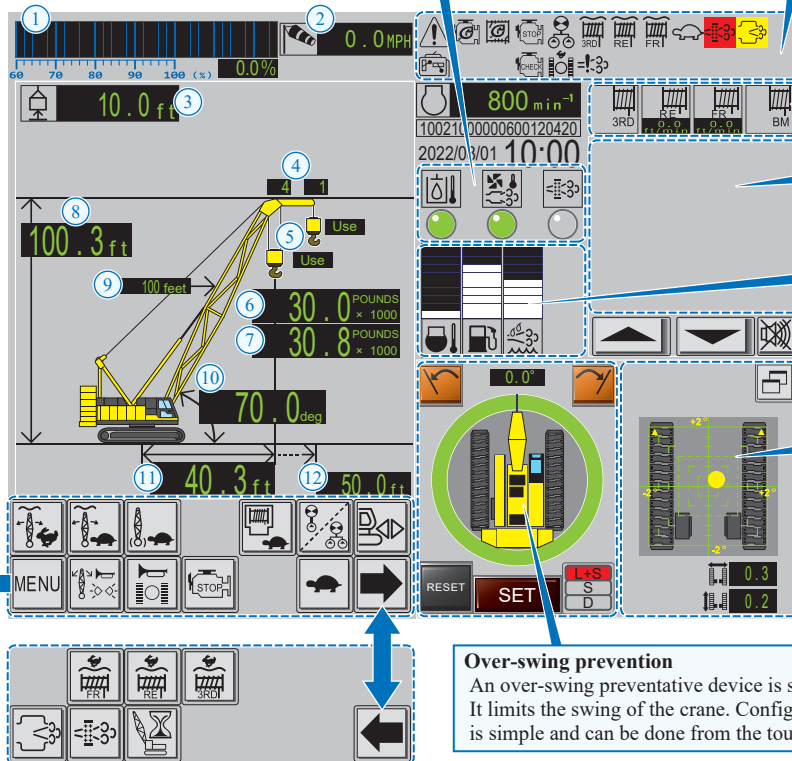


Display lamp

- Engine warning lamp
- G-Engine indication lamp
- G-Winch indication lamp
- Auto Idle stop indication lamp
- Confluence indication lamp
- Front drum free fall indication lamp
- Rear drum free fall indication lamp
- Third drum free fall indication lamp
- Inching speed lamp
- SCR refresh cancel state lamp
- Refresh cancel state lamp
- Remote control connection lamp
- Engine system error lamp
- Travel speed lamp
- SCR system error lamp

- Hydraulic oil temperature lamp
- Exhaust system cooling call lamp
- SCR refresh error lamp

- ① Moment ratio indicator
- ② Wind speed indicator
- ③ Hook height
- ④ Front & Rear No. of part line
- ⑤ Main & Aux. hook type
- ⑥ Actual load
- ⑦ Rated load
- ⑧ Point height
- ⑨ Boom length
- ⑩ Boom angle
- ⑪ Working radius
- ⑫ Max. working radius



- Boom drum rotation lamp
- Front drum rotation lamp
- Rear drum rotation lamp
- Third drum rotation lamp (optional)

Error message
Touch to display details in a pop-up window.

Gauges
Engine coolant temperature gauge
Fuel bar gauge
Def/adblue® bar gauge
* Figures for the above gauges are only shown when the bar is touched.

Ground incline indicator (optional)
This device is to detect inclination of the crane against the ground to indicate and issue warning.

Over-swing prevention

An over-swing preventative device is standard. It limits the swing of the crane. Configuration is simple and can be done from the touch panel.

Main menu

- Crane config.
- Angle/radius Limiter
- Self check Mode



- Adjustment mode
- Service mode

CK1200G-3 HDO

WINCH PERFORMANCE DATA

Note :

Line speed and line pull based on ISUZU 6HK1 at 1,900 rpm.

Line speed and line pull based on single line.

Max. line pull is based on referential performance, not wire rope strength.

		Line speed (ft / min)						
		Layer	1	2	3	4	5	6
Front & Rear Drum (free fall)	0	393	421	449	476	504		
	5,000	393	421	449	476	504		
	10,000	387	414	440	467	494		
	15,000	353	353	358	339	339		
	20,000	265	265	254	254	254		storage only
	25,000	212	212	202	191	177		
	30,000	166	149	140	138	136		
	35,000	120	118	114	109			
	40,000	100	95					
	Storage Capacity (ft)	145	155	165	176	186	196	

Wire Rope Diameter = See spec in chart below

Rated Line Pull = 25,000 lbf (108 kN)

Maximum Line Pull = 46,800 lbf (208 kN)

Total Storage Capacity = 1,185 ft (361.3 m)

		Line speed (ft / min)						
		Layer	1	2	3	4	5	6
Third Drum (for Load hoist)	0	393	421	449	476	504		
	5,000	393	421	449	476	504		
	10,000	387	414	440	467	494		
	15,000	360	360	348	348	348		
	20,000	270	270	261	261	261		storage only
	25,200	214	214	199	187	173		
	30,000	166	149	140	138	136		
	35,000	120	118	114	109			
	40,000	100	95					
	Storage Capacity (ft)	145	155	165	176	186	196	

Wire Rope Diameter = See spec in chart below

Rated Line Pull = 25,000 lbf (108 kN)

Maximum Line Pull = 46,800 lbf (208 kN)

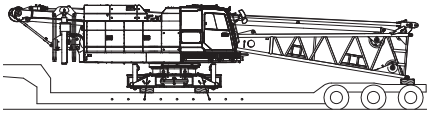
Total Storage Capacity = 986 ft (300.4 m)

Wire Rope Specifications

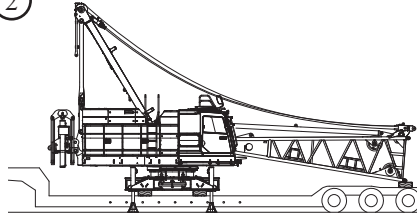
Use	Rope spec.	Rope dia.	Rope length	Safety factor	Breaking strength
Front drum	IWRC 6 × Fi (29) Right-hand Regular lay	1.048" to 1.067" (26.63 mm to 27.09 mm)	853 ft (260 m)	3.5 : 1	120,048 lbf (534 kN)
Front drum (Option)	U3 × SeS (48) Right-hand Regular lay	1.050" to 1.065" (26.68 mm to 27.04 mm)	853 ft (260 m)	3.5 : 1	135,110 lbf (601 kN)
Rear drum	IWRC 6 × Fi (29) Right-hand Regular lay	1.048" to 1.067" (26.63 mm to 27.09 mm)	755 ft (230 m)	3.5 : 1	120,048 lbf (534 kN)
Rear drum (Option)	U3 × SeS (48) Right-hand Regular lay	1.050" to 1.065" (26.68 mm to 27.04 mm)	755 ft (230 m)	3.5 : 1	135,110 lbf (601 kN)
Boom hoist drum	IWRC 6 × P·WS (31) Right-hand Regular lay	0.809" to 0.820" (20.56 mm to 20.84 mm)	509 ft (155 m)	3.5 : 1	73,737 lbf (328 kN)
Boom hoist drum (Option)	IWRC 8 × P·S (19) Right-hand Regular lay	0.809" to 0.820" (20.56 mm to 20.84 mm)	509 ft (155 m)	3.5 : 1	73,737 lbf (328 kN)
Third drum (Option)	IWRC 6 × Fi (29) Right-hand Regular lay	1.048" to 1.067" (26.63 mm to 27.09 mm)	623 ft (190 m)	3.5 : 1	120,048 lbf (534 kN)

CK1200G-3 HDO SELF-ASSEMBLY PROCEDURE

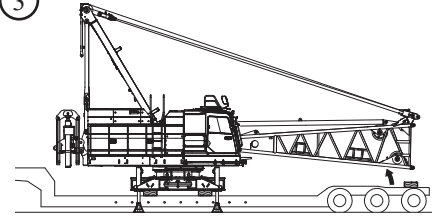
①



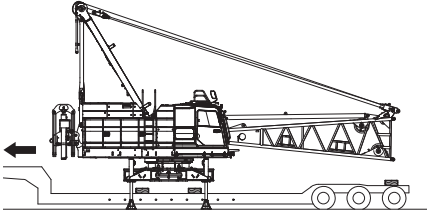
②



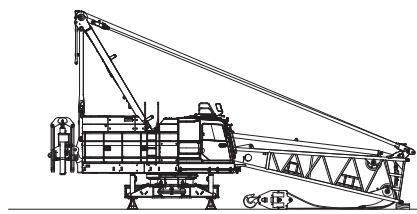
③



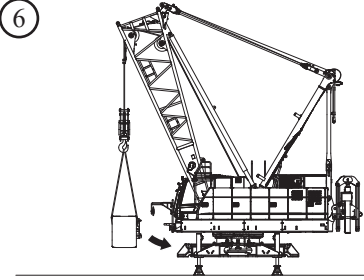
④



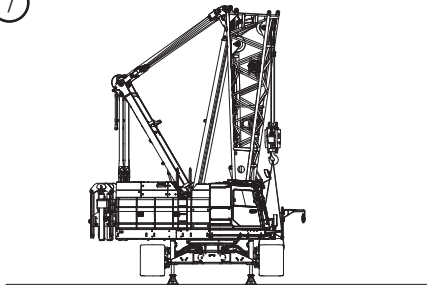
⑤



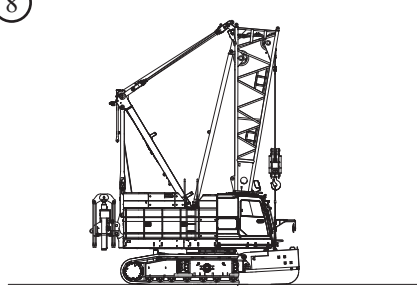
⑥



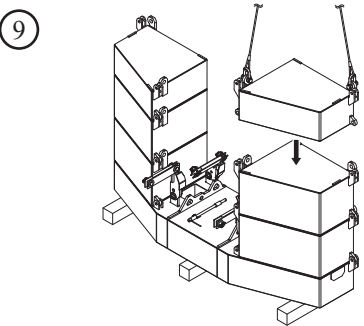
⑦



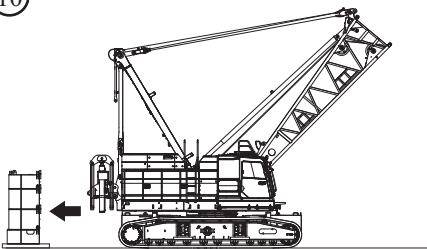
⑧



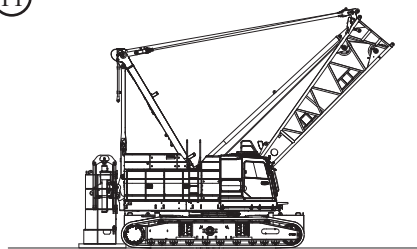
⑨



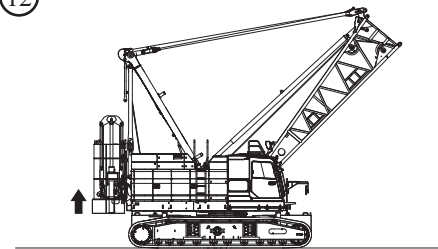
⑩



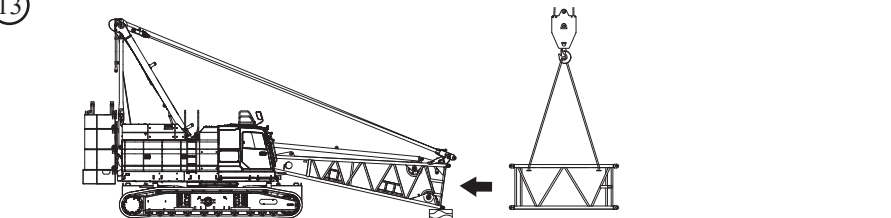
⑪



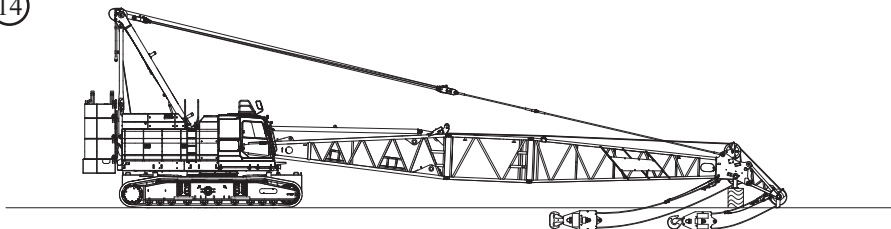
⑫



⑬

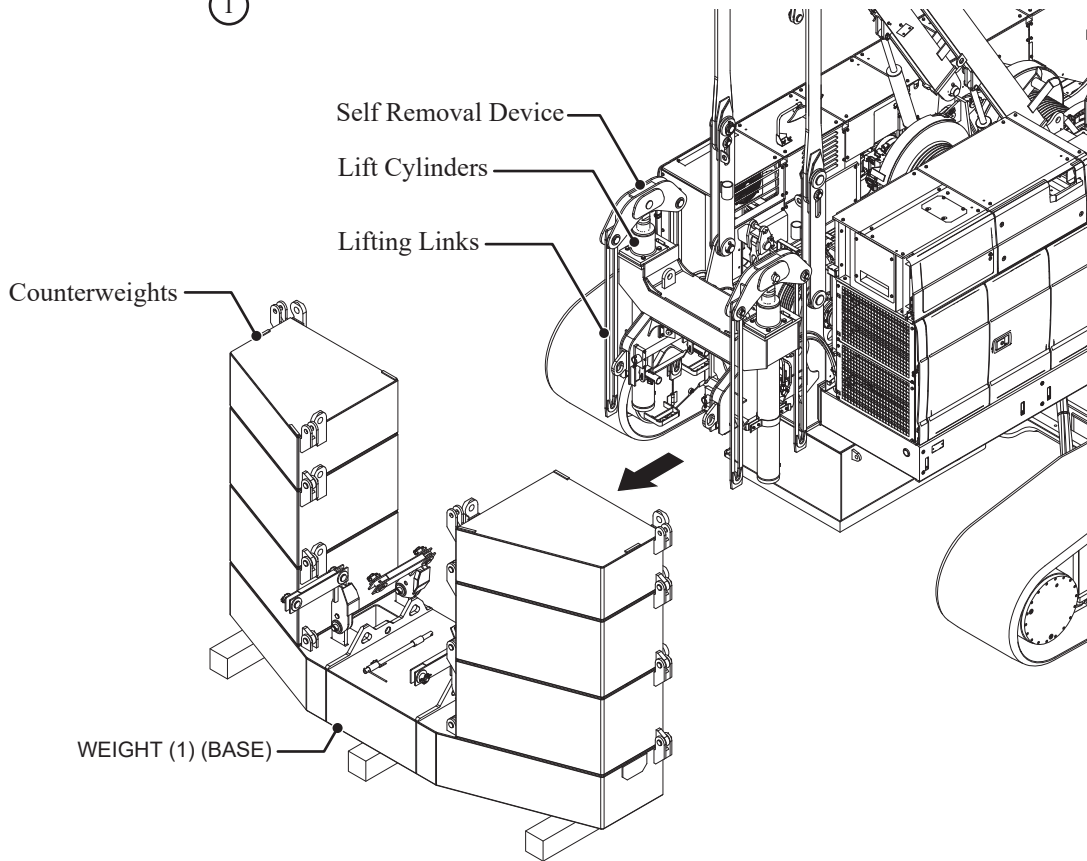


⑭

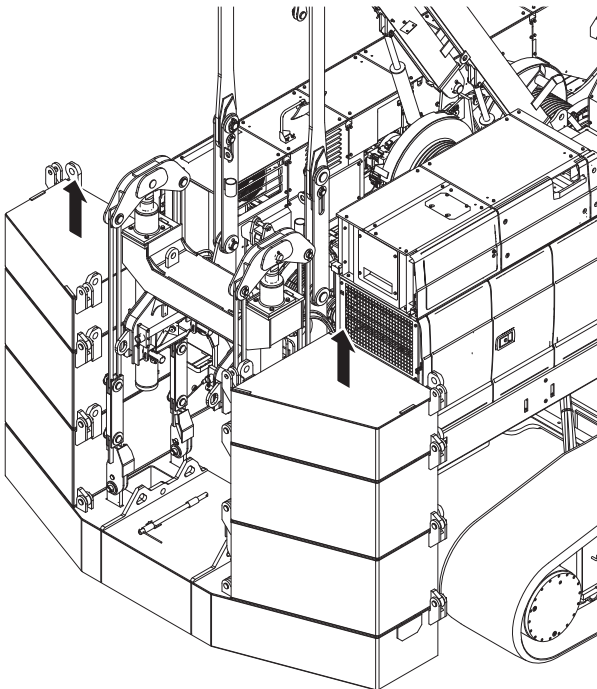


CK1200G-3 HDO COUNTERWEIGHT SELF REMOVAL DEVICE

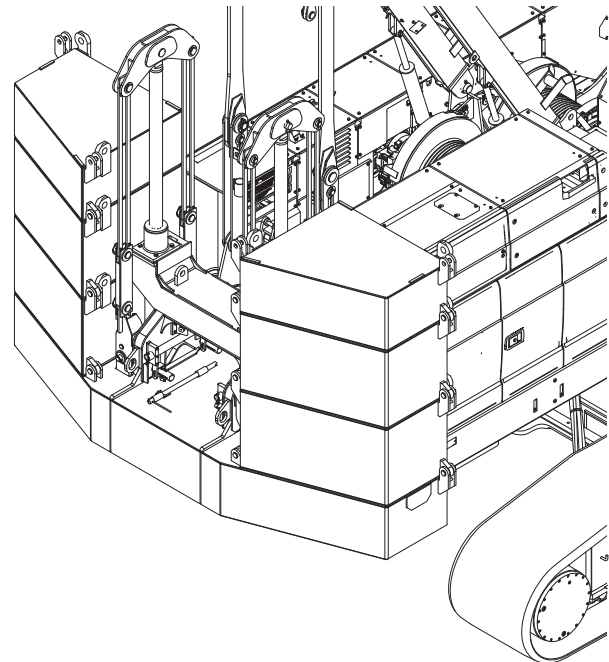
①



②



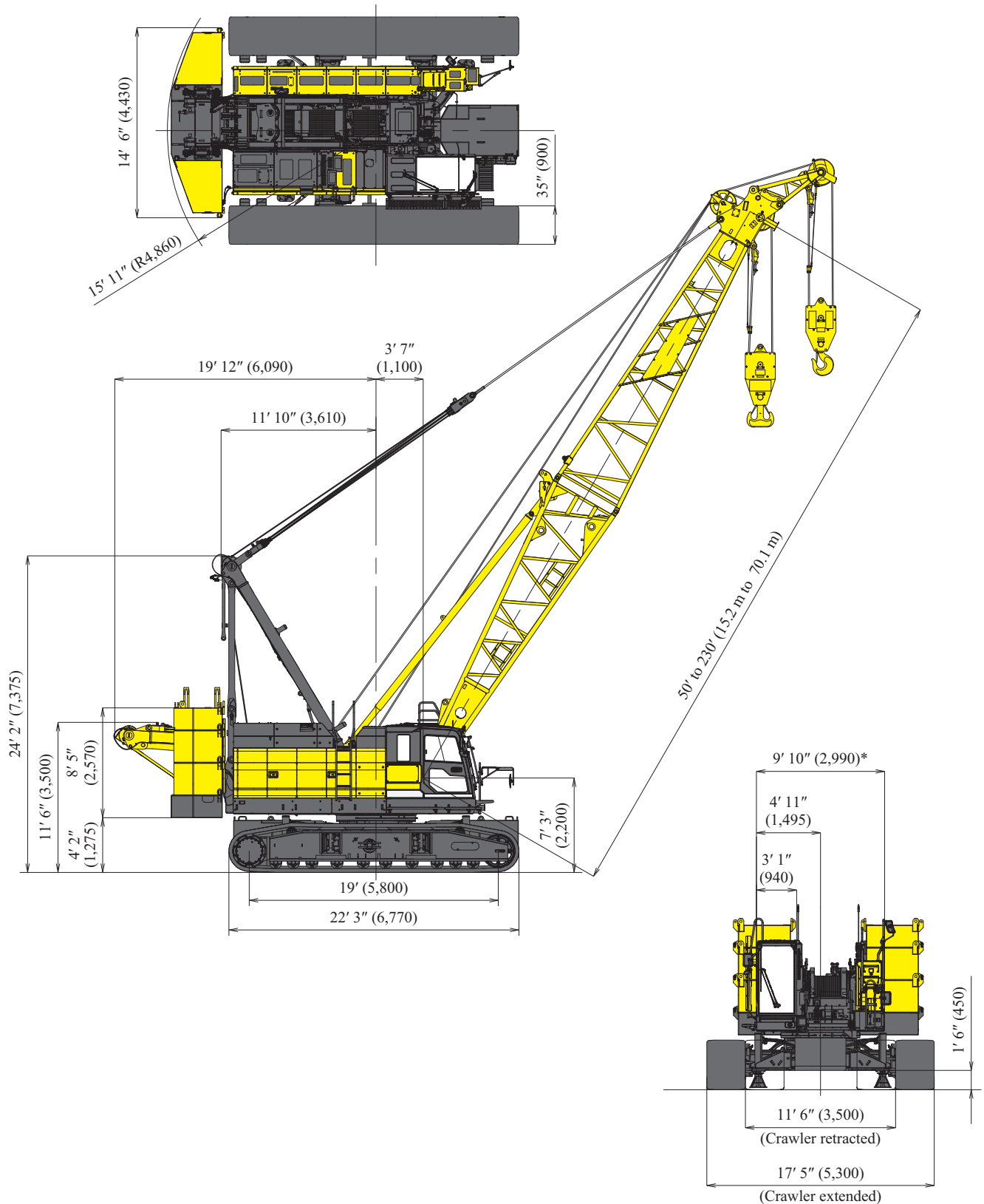
③



CK1200G-3 HDO GENERAL DIMENSIONS

Crane Boom

Unit : ft. in. (mm)



* 10' 5" wide with step on cab side only.
11' wide with step on both sides.

CK1200G-3 HDO

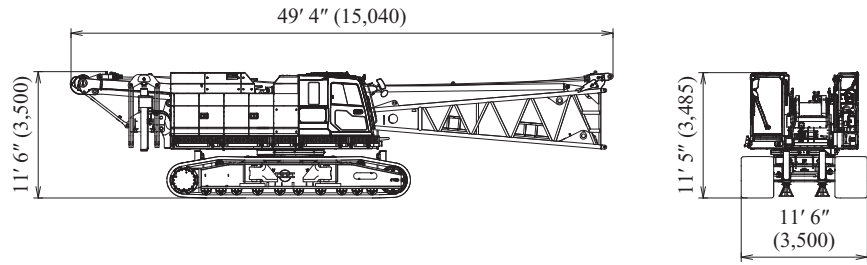
DIMENSIONS & WEIGHT

Dimensions : ft-in (mm) Weight : lbs (kg)

Base Machine - 1

Weight: 132,245 lbs (59,985 kg)

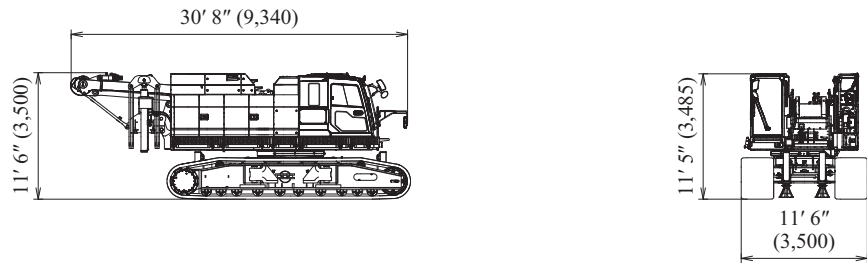
- Gantry
- Boom base.....
- Boom drum
- Wire rope Front.....
- Rear
- Boom drum
- Self removal device
- Step
- Crawler.....
- Translifter.....



Base Machine - 2

Weight: 124,560 lbs (56,500 kg)

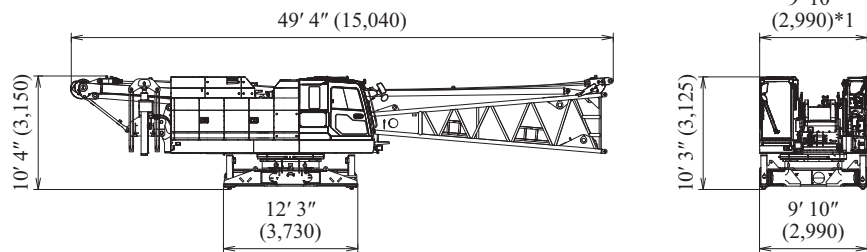
- Gantry
- Boom base.....
- Boom drum
- Wire rope Front.....
- Rear
- Boom drum
- Self removal device
- Step
- Crawler.....
- Translifter.....



Base Machine - 3

Weight: 78,300 lbs (35,520 kg)

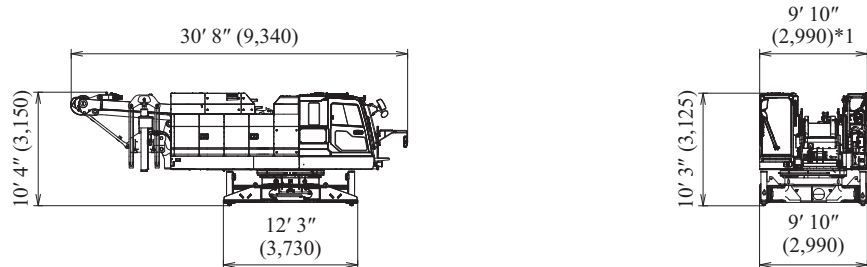
- Gantry
- Boom base.....
- Boom drum
- Wire rope Front.....
- Rear
- Boom drum
- Self removal device
- Step
- Crawler.....
- Translifter.....



Base Machine - 4

Weight: 70,610 lbs (32,030 kg)

- Gantry
- Boom base.....
- Boom drum
- Wire rope Front.....
- Rear
- Boom drum
- Self removal device
- Step
- Crawler.....
- Translifter.....



○ : With
 × : Without

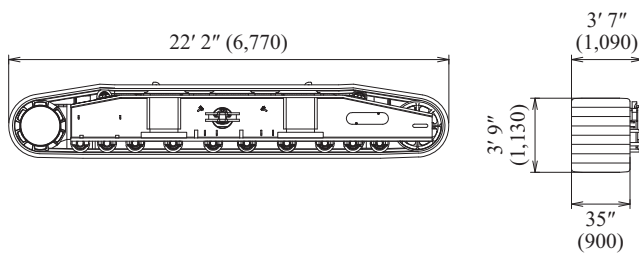
* 10' 5" wide with step on cab side only.
 11' wide with step on both sides.

CK1200G-3 HDO DIMENSIONS & WEIGHT

Dimensions : ft-in (mm) Weight : lbs (kg)

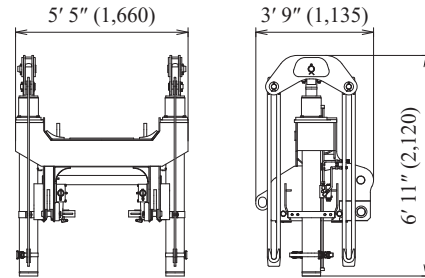
Crawler

Weight: 26,785 lbs (12,150 kg)



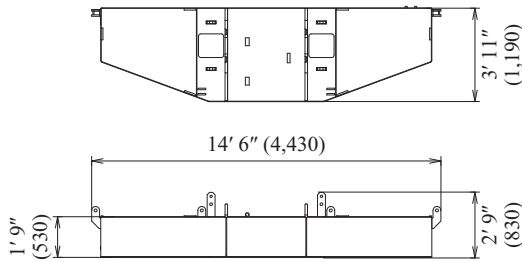
Self Removal Unit

Weight: 3,155 lbs (1,430 kg)



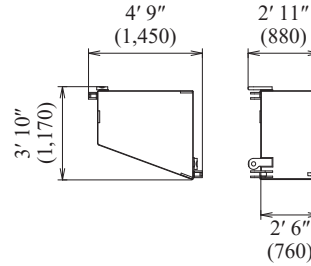
Counterweight Base

Weight: 25,600 lbs (11,600 kg)



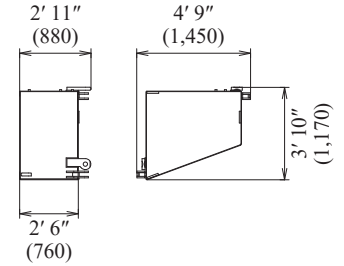
Left Side Counterweight (2),(4)

Weight: 12,680 lbs (5,750 kg)



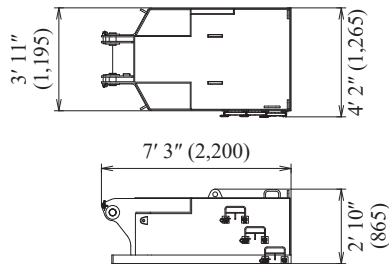
Right Side Counterweight (3),(5)

Weight: 12,680 lbs (5,750 kg)



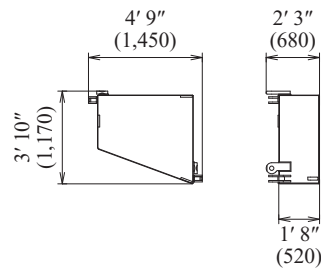
Carbody Weight (2 Pieces)

Weight: 22,050 lbs (10,000 kg)



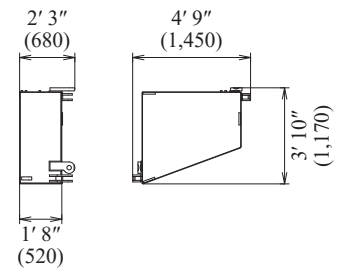
Left Side Counterweight (6)

Weight: 7,610 lbs (3,450 kg)



Right Side Counterweight (7)

Weight: 7,610 lbs (3,450 kg)

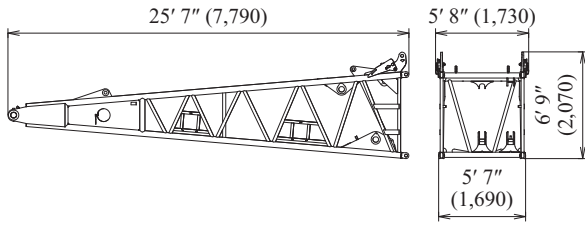


CK1200G-3 HDO DIMENSIONS & WEIGHT

Dimensions : ft-in (mm) Weight : lbs (kg)

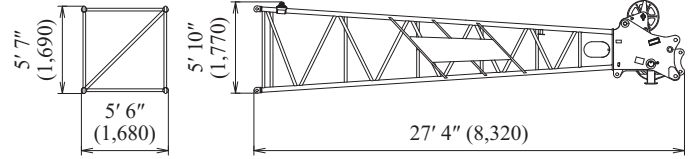
Boom Base

Weight: 4,930 lbs (2,235 kg)



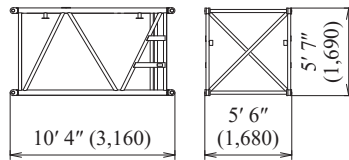
Boom Tip

Weight: 3,385 lbs (1,535 kg)



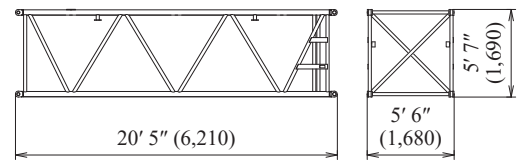
10 ft (3.0 m) Boom Insert

Weight: 850 lbs (385 kg)



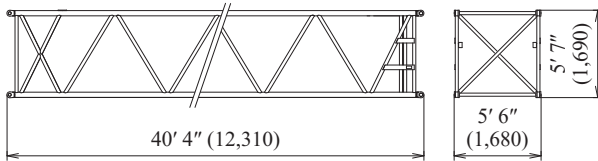
20 ft (6.1 m) Boom Insert

Weight: 1,445 lbs (655 kg)



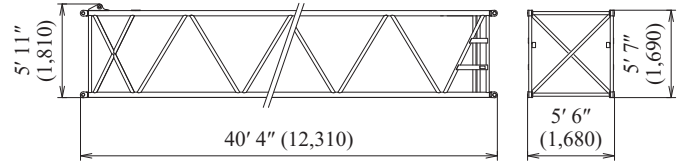
40 ft (12.2 m) Boom Insert

Weight: 2,635 lbs (1,195 kg)



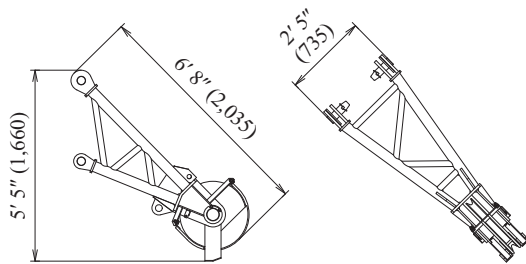
40 ft (12.2 m) Boom Insert with Lug

Weight: 2,690 lbs (1,220 kg)



Auxiliary Sheave

Weight: 660 lbs (330kg)

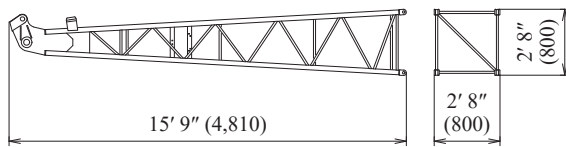


CK1200G-3 HDO DIMENSIONS & WEIGHT

Dimensions : ft-in (mm) Weight : lbs (kg)

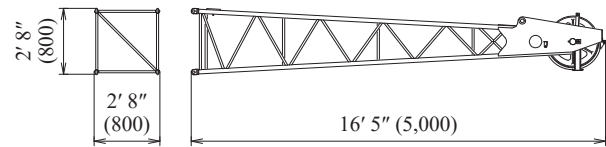
Fixed Jib Base

Weight: 440 lbs (200 kg)



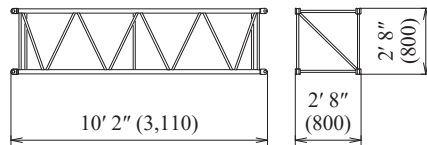
Fixed Jib Tip

Weight: 620 lbs (280 kg)



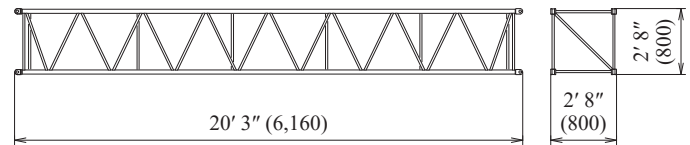
10 ft (3.0 m) Fixed Jib Insert

Weight: 220 lbs (100 kg)



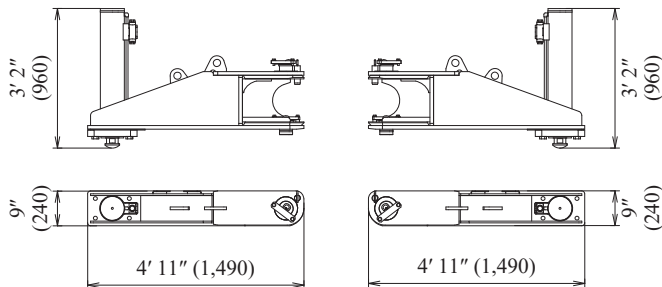
20 ft (6.1 m) Fixed Jib Insert

Weight: 400 lbs (180 kg)



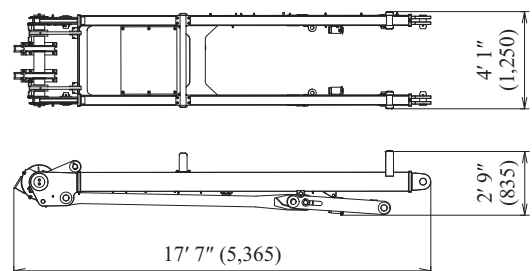
Translifter

Weight: 820 lbs (370 kg)



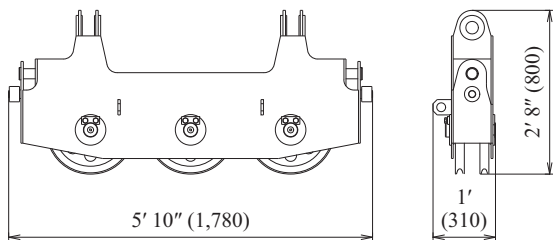
Gantry

Weight: 3,440 lbs (1,560 kg)



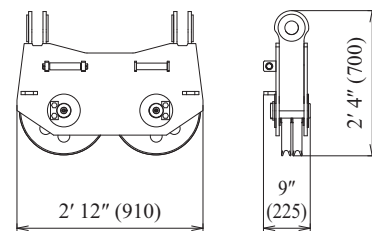
Upper Spreader

Weight: 660 lbs (300 kg)



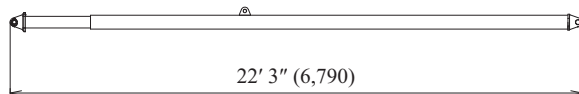
Lower Spreader

Weight: 440 lbs (200 kg)



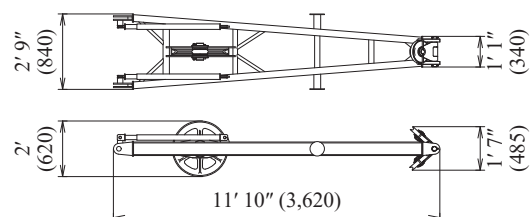
Boom Backstop

Weight: 970 lbs (440 kg)



Fixed Jib Strut

Weight: 610 lbs (275 kg)



CK1200G-3 HDO TRANSPORTATION PLAN

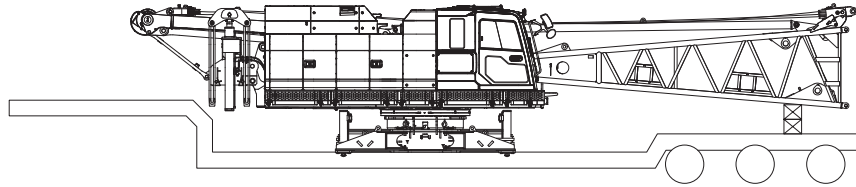
Shipping plan for 110 ft Boom

Description of Item	Weight		Trailer Loads						
	lbs	(kg)	#1	#2	#3	#4	#5	#6	#7
Base Machine with Boom Base*	78,690	(35,695)	1						
Crawler	26,785	(12,150)		1	1				
Counterweight Base	25,600	(11,600)					1		
Counterweight (L) (2),(4)	12,680	(5,750)				1		1	
Counterweight (R) (3),(5)	12,680	(5,750)				1		1	
Counterweight (L) (6)	7,610	(3,450)						1	
Counterweight (R) (7)	7,610	(3,450)						1	
Carbody Weight	22,050	(10,000)							2
20 ft Boom Insert	1,445	(655)		1					
40 ft Boom Insert (w/ Lug)	2,690	(1,220)				1			
Boom Tip	3,385	(1,535)					1		
120 Ton Block	3,750	(1,700)			1				
13 Ton Ball	1,000	(445)			1				
Ladder Assembly	49	(22)			1				
Support Box	5,000	(2,268)		1					
Auxiliary Sheave	660	(330)		1					
Approx. Total Shipping Weight		lbs (kg)	78,690 (35,695)	33,890 (15,403)	31,584 (14,317)	28,050 (12,720)	28,985 (13,135)	40,580 (18,400)	44,100 (20,000)

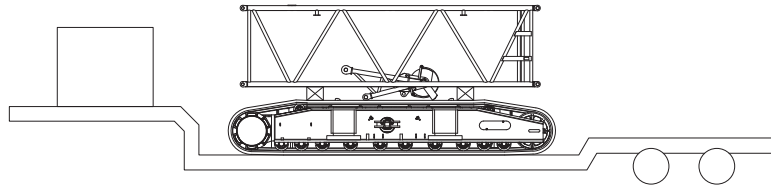
* Steps on both sides are included. Third drum is not included. Add 6,100 lbs if third drum is installed.
 Loads for transportation were targeted at 45,000 lbs, 8' 6" wide, 48' long and 13' 6" high from ground, 48' step deck.
 This may vary depending on truck/trailer weight, style of trailer and state law.

* Double drop trailer required.

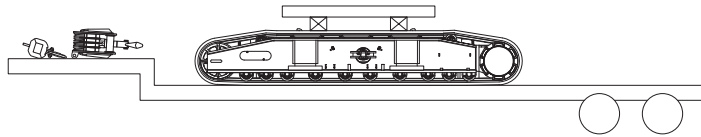
Trailer #1



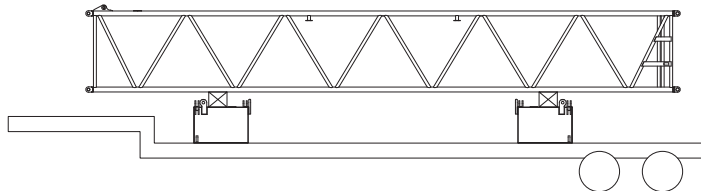
Trailer #2*



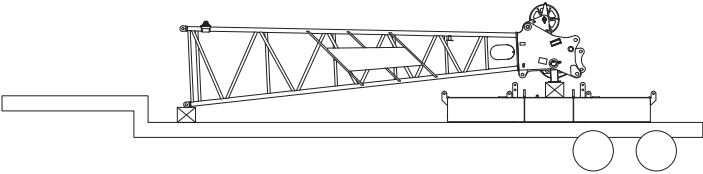
Trailer #3



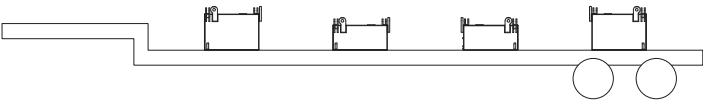
Trailer #4



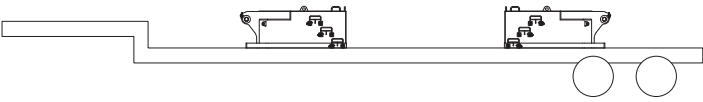
Trailer #5



Trailer #6

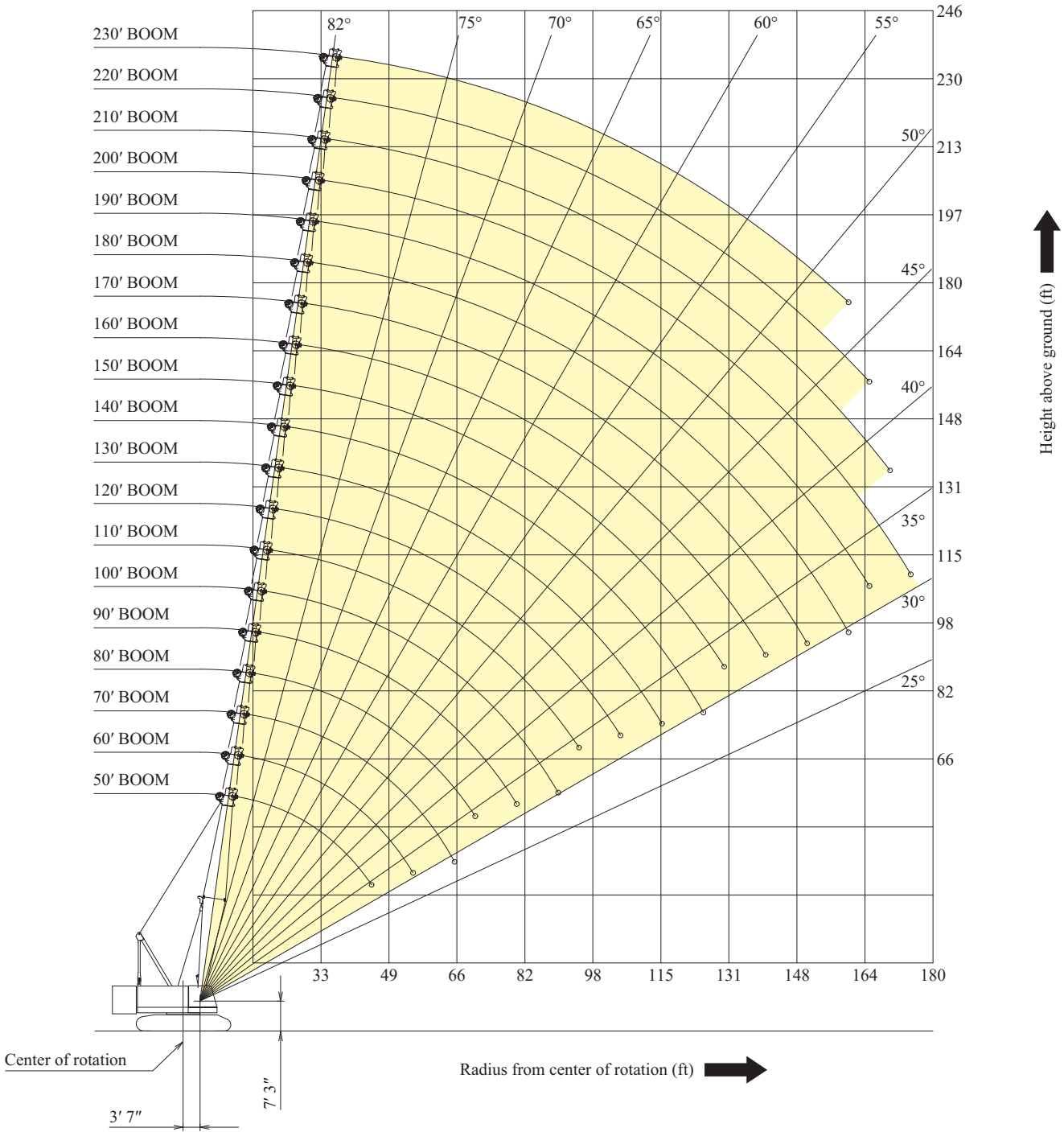


Trailer #7



CK1200G-3 HDO WORKING RANGES

Main Boom

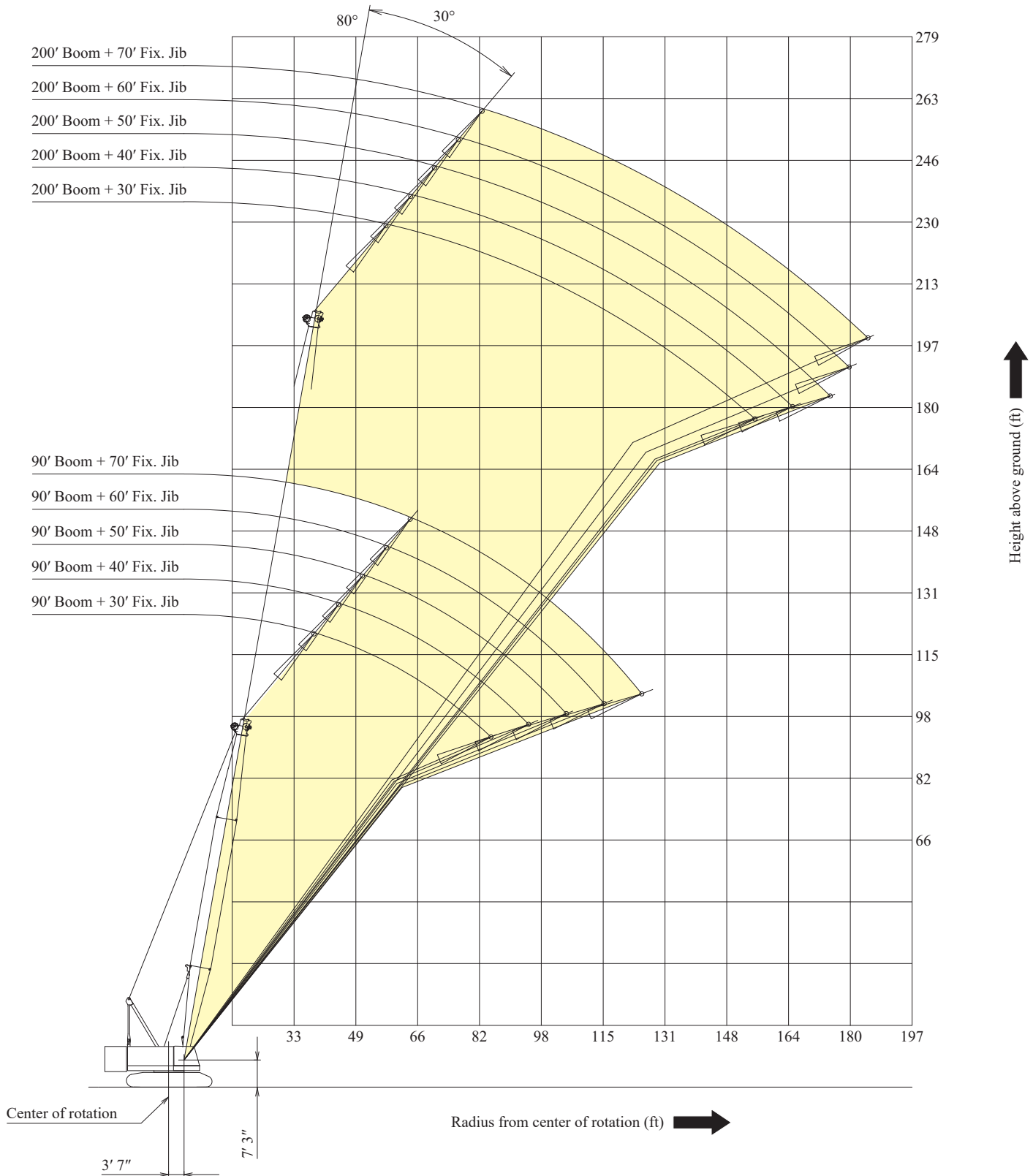


Fixed Jib 10°



CK1200G-3 HDO WORKING RANGES

Fixed Jib 30°



Boom Arrangement

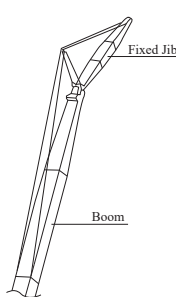
Boom length : ft (m)	Boom arrangement
50 (15.2)	
60 (18.3)	※
70 (21.3)	※
80 (24.4)	※
90 (27.4)	※
100 (30.5)	※
110 (33.5)	※
120 (36.6)	※
130 (39.6)	※
140 (42.7)	※
150 (45.7)	※
160 (48.8)	※

Boom length : ft (m)	Boom arrangement
170 (51.8)	※
180 (54.9)	※
190 (57.9)	※
200 (61.0)	※
210 (64.0)	※
220 (67.1)	※
230 (70.1)	※

Symbol	Boom Length	Remarks
	25 ft (7.6 m)	Boom Base
	25 ft (7.6 m)	Boom Tip
	10 ft (3.0 m)	Boom Insert
	20 ft (6.1 m)	Boom Insert
	40 ft (12.2 m)	Boom Insert
	40 ft (12.2 m)	Boom Insert with Lug

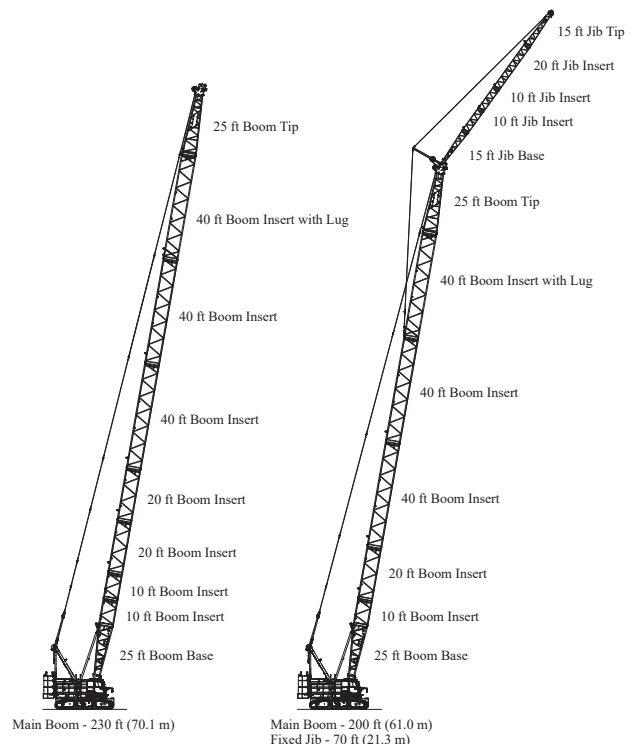
- Mark shows the boom insert with lugs attached and the guy line installing position when the jib is used.
- ※ Indicates the most flexible combination of boom inserts, which can be modified to form all shorter boom arrangements.

Fixed Jib Arrangement



Crane boom length	Jib length : ft (m)	Jib arrangement
90 ft (27.4 m) to 200 ft (61.0 m)	30 (9.1)	
	40 (12.2)	
	50 (15.2)	
	60 (18.3)	
	70 (21.3)	

Symbol	Jib Length	Remarks
	15 ft (4.6 m)	Jib Base
	15 ft (4.6 m)	Jib Tip
	10 ft (3.0 m)	Jib Insert
	20 ft (6.1 m)	Jib Insert



Boom

1. Rated loads included in the charts are the maximum allowable freely suspended loads at a given boom length, boom angle and load radius, and have been determined for the machine standing level on firm supporting surface under ideal operating conditions. The user must limit or derate rated loads to allow for adverse conditions (such as soft or uneven ground, out-of-level conditions, wind, side loads, pendulum action, jerking or sudden stopping of loads, inexperience of personnel, multiple machine lifts, and traveling with a load).

2. Rated loads do not exceed 75% of minimum tipping loads. Rated loads based on factors other than machine stability such as structural competence are shown by asterisk * in the charts.

3. The machine must be reeved and set-up as stated in the operation manual and all the instruction manuals if these manuals are missing, obtain replacements.

- Boom backstops are required for all boom lengths.
- Gantry must be fully raised position for all operations.
- The crane must be leveled to within 1% on a firm supporting surface.
- Counterweights and carbody weights are fully installed.

4. Do not attempt to lift where no ratings are shown as crane may tip or collapse.

5. Attempting to lift more than rated loads may cause machine to tip or collapse. Do not tip machine to determine capacity.

6. Weight of hooks, hook blocks, slings and other lifting devices are a part of the total load. Their total weight must be subtracted from the rated load to obtain the weight that can be lifted.

7. When lifting over boom point with auxiliary sheave, rated loads for the boom must be deducted as shown below.

Jib Length	Aux Sheave
Deductions (lbs)	700

When auxiliary sheave is used for 10 or 9 reeving parts of line, it is not required to deduct 700 lbs from rated loads.

8. The total load that can be lifted over an auxiliary sheave is the value for 700 lbs deducted from rated load for the boom without auxiliary sheave, but it should not exceed auxiliary maximum hoist loads.

9. Boom lengths that can attach auxiliary sheave are from 50 ft (15.2 m) to 110 ft (33.5 m).

10. The boom should be erected over the front of the crawlers, not laterally.

11. Least stable position is over the side.

12. Maximum hoist load for number of reeving parts of line for hoist rope.

Main Boom Hoist Loads

No. of Parts of line	1	2	3	4	5
Maximum Loads (lbs)	25,000	50,000	75,000	100,000	125,000

No. of Parts of line	6	7	8	9*	10*
Maximum Loads (lbs)	150,000	175,000	200,000	225,000	240,000

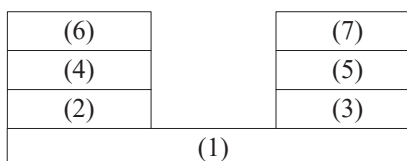
*Use auxiliary sheave.

Auxiliary Hoist Loads

No. of Parts of line	1	2
Maximum Loads (lbs)	25,000	50,000

13. Assembling the counterweight

- 91,540 lbs counterweight (No.1 to No.7)
- 44,100 lbs carbody weight.



COUNTERWEIGHTS



CARBODY WEIGHTS

14. Weight of recommended hook block.

Hook Block	120 USt	77 USt	39 USt	BALL HOOK
Weight (lbs)	3,750	1,990	1,545	1,000

WARNING

If the weight of hook block to be used is lighter than the recommended weight, the jib may turnover backward or it is difficult to lower the empty hook block.

15. Lifting capacities listed apply only to the machine as originally manufactured and designed by KOBELCO CONSTRUCTION MACHINERY CO., LTD. Modifications to this machine or use of equipment other than that specified can reduce operating capacity.

16. Designed and rated to comply with ASME B30.5-2014.

Operation of this equipment in excess of rated loads or disregard of instruction voids the warranty.

Main Boom Lift Capacity

Counterweights : 91,540 lbs Carbody weights : 44,100 lbs

50' Boom			60' Boom			70' Boom			80' Boom			90' Boom		
Load Radius (ft)	Boom Angle (deg.)	360° Rated Load (lbs)	Load Radius (ft)	Boom Angle (deg.)	360° Rated Load (lbs)	Load Radius (ft)	Boom Angle (deg.)	360° Rated Load (lbs)	Load Radius (ft)	Boom Angle (deg.)	360° Rated Load (lbs)	Load Radius (ft)	Boom Angle (deg.)	360° Rated Load (lbs)
12.0	81.4	240,000*	13.5	81.4	210,000*	15.0	81.4	190,000*	16.5	81.4	171,000*	18.0	81.4	150,000*
13.0	80.2	220,000*	14.0	80.9	204,000*	16.0	80.5	177,000*	17.0	81.0	163,000*	19.0	80.7	140,000*
14.0	79.0	206,000*	15.0	79.9	190,000*	17.0	79.7	163,000*	18.0	80.3	150,000*	20.0	80.1	135,000*
15.0	77.9	191,000*	16.0	78.9	177,000*	18.0	78.9	150,000*	19.0	79.6	142,100*	22.0	78.8	122,400*
16.0	76.7	177,000*	17.0	78.0	163,000*	19.0	78.0	142,100*	20.0	78.8	135,000*	24.0	77.5	113,400*
17.0	75.5	163,000*	18.0	77.0	150,000*	20.0	77.2	135,000*	22.0	77.4	122,400*	26.0	76.2	106,400*
18.0	74.3	150,000*	19.0	76.0	142,100*	22.0	75.5	122,700*	24.0	75.9	114,200*	28.0	74.8	98,600*
19.0	73.1	142,100*	20.0	75.0	135,000*	24.0	73.8	114,700*	26.0	74.4	108,700*	30.0	73.5	91,100*
20.0	71.9	135,000*	22.0	73.0	122,700*	26.0	72.1	109,700*	28.0	72.9	100,900*	32.0	72.2	84,900*
22.0	69.5	122,800*	24.0	71.0	114,700*	28.0	70.3	102,400*	30.0	71.4	93,200*	34.0	70.8	79,700*
24.0	67.0	114,900*	26.0	69.0	109,900*	30.0	68.6	95,000*	32.0	69.9	86,800*	36.0	69.5	75,100*
26.0	64.4	109,900*	28.0	66.9	102,800*	32.0	66.8	88,400*	34.0	68.3	81,200*	38.0	68.1	70,500
28.0	61.8	102,700*	30.0	64.8	95,600*	34.0	65.0	82,400*	36.0	66.8	76,100*	40.0	66.7	66,200
30.0	59.2	95,200*	32.0	62.6	89,000*	36.0	63.2	76,900*	38.0	65.2	71,100	45.0	63.2	56,650
32.0	56.4	87,800*	34.0	60.4	83,000*	38.0	61.3	71,400	40.0	63.6	66,400	50.0	59.5	49,500
34.0	53.6	80,000*	36.0	58.2	77,500*	40.0	59.4	66,400	45.0	59.5	57,050	55.0	55.8	43,700
36.0	50.7	71,900*	38.0	55.9	71,900	45.0	54.5	57,050	50.0	55.2	49,800	60.0	51.8	38,900
38.0	47.6	63,700*	40.0	53.5	66,300	50.0	49.2	50,000	55.0	50.7	44,000	65.0	47.6	35,000
40.0	44.3	56,900*	45.0	47.2	52,000*	55.0	43.5	42,300	60.0	45.8	38,800	70.0	43.0	31,900
45.0	35.2	47,100*	50.0	40.2	43,300*	60.0	37.1	34,300*	65.0	40.5	32,300*	75.0	38.1	27,800
			55.0	31.9	36,300*				70.0	34.6	28,200*	80.0	32.5	23,300*
Reeves 10			Reeves 9			Reeves 8			Reeves 7			Reeves 6		
100' Boom			110' Boom											
Load Radius (ft)	Boom Angle (deg.)	360° Rated Load (lbs)	Load Radius (ft)	Boom Angle (deg.)	360° Rated Load (lbs)									
19.5	81.4	137,500*	20.9	81.4	128,600*									
20.0	81.1	135,000*	22.0	80.8	122,000*									
22.0	79.9	122,200*	24.0	79.8	111,400*									
24.0	78.8	112,400*	26.0	78.7	101,500*									
26.0	77.6	103,900*	28.0	77.7	93,700*									
28.0	76.4	96,100*	30.0	76.6	86,500*									
30.0	75.2	88,700*	32.0	75.5	80,800*									
32.0	74.0	82,800*	34.0	74.4	75,900*									
34.0	72.8	77,800*	36.0	73.3	71,600*									
36.0	71.6	73,300*	38.0	72.3	67,300*									
38.0	70.4	68,900*	40.0	71.2	63,400*									
40.0	69.2	64,800*	45.0	68.4	55,650*									
45.0	66.1	56,200	50.0	65.5	48,900									
50.0	62.9	49,300	55.0	62.6	43,100									
55.0	59.6	43,500	60.0	59.6	38,200									
60.0	56.2	38,700	65.0	56.5	34,400									
65.0	52.6	34,800	70.0	53.3	31,300									
70.0	48.9	31,700	75.0	50.0	28,500									
75.0	45.0	29,000	80.0	46.5	26,100									
80.0	40.7	26,100	85.0	42.7	24,100									
85.0	36.0	22,000*	90.0	38.7	22,400									
90.0	30.8	19,400*	95.0	34.3	19,600*									
Reeves 6			Reeves 6											

*Note: Designed and rated to comply with ANSI Code B30.5
Capacities based on factors other than machine stability such as structural competence are shown by asterisk * in the charts.
Refer to notes on page 22.*

Boom And Fixed Jib

1. Rated loads included in the charts are the maximum allowable freely suspended loads at a given boom length, boom angle and load radius, and have been determined for the machine standing level on firm supporting surface under ideal operating conditions. The user must limit or derate rated loads to allow for adverse conditions (such as soft or uneven ground, out-of-level conditions, wind, side loads, pendulum action, jerking or sudden stopping of loads, inexperience of personnel, multiple machine lifts, and traveling with a load).

2. Rated loads do not exceed 75% of minimum tipping loads. Rated loads based on factors other than machine stability such as structural competence are shown by asterisk * in the charts.

3. The machine must be reeved and set-up as stated in the operation manual and all the instruction manuals if these manuals are missing, obtain replacements.

- Boom backstops are required for all boom lengths.
- Gantry must be fully raised position for all operations.
- The crane must be leveled to within 1% on a firm supporting surface.
- Counterweights and carbody weights are fully installed.

4. Do not attempt to lift where no ratings are shown as crane may tip or collapse.

5. Attempting to lift more than rated loads may cause machine to tip or collapse. Do not tip machine to determine capacity.

6. Weight of hooks, hook blocks, slings and other lifting devices are a part of the total load. Their total weight must be subtracted from the rated load to obtain the weight that can be lifted.

7. When lifting over boom point with jib or auxiliary sheave, rated loads for the boom must be deducted as shown below.

Jib Length	Aux Sheave	30 ft	40 ft	50 ft	60 ft	70 ft
Deductions (lbs)	700	2,400	3,200	4,200	5,200	6,200

When auxiliary sheave is used for 10 or 9 reeving parts of line, it is not required to deduct 700 lbs from rated loads.

8. The total load that can be lifted over a jib is limited by rated jib loads.

9. Boom lengths for jib mounting are 90 ft (27.4 m) to 200 ft (61.0 m).

10. The total load that can be lifted over an auxiliary sheave is the value for 700 lbs deducted from rated load for the boom without auxiliary sheave, but it should not exceed auxiliary maximum hoist loads.

11. Boom lengths that can attach auxiliary sheave are from 50 ft (15.2 m) to 220 ft (67.1 m).

12. The boom should be erected over the front of the crawlers, not laterally. When erecting and lowering the boom length of 230 ft (70.1 m) and the boom length of 200 ft (61.0 m) with jib, the blocks for erection must be placed at the end of the crawlers.

13. Least stable position is over the side.

14. Maximum hoist load for number of reeving parts of line for hoist rope.

Main Boom Hoist Loads

No. of Parts of line	1	2	3	4	5
Maximum Loads (lbs)	25,000	50,000	75,000	100,000	125,000

No. of Parts of line	6	7	8	9*	10*
Maximum Loads (lbs)	150,000	175,000	200,000	225,000	240,000

*Use auxiliary sheave.

Jib Hoist Loads

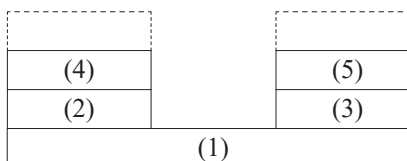
No. of Parts of line	1
Maximum Loads (lbs)	24,000

Auxiliary Hoist Loads

No. of Parts of line	1	2
Maximum Loads (lbs)	25,000	50,000

15. Assembling the counterweight

- 76,320 lbs counterweight (No.1 to No.5)
- 44,100 lbs carbody weight.



COUNTERWEIGHTS



CARBODY WEIGHTS

16. Weight of recommended hook block.

Hook Block	120 USt	77 USt	39 USt	BALL HOOK
Weight (lbs)	3,750	1,990	1,545	1,000



If the weight of hook block to be used is lighter than the recommended weight, the jib may turnover backward or it is difficult to lower the empty hook block.

17. Lifting capacities listed apply only to the machine as originally manufactured and designed by KOBELCO CONSTRUCTION MACHINERY CO.,LTD. Modifications to this machine or use of equipment other than that specified can reduce operating capacity.

18. Designed and rated to comply with ASME B30.5-2014.

Operation of this equipment in excess of rated loads or disregard of instruction voids the warranty.

Main Boom Lift Capacity

Counterweights : 76,320 lbs Carbody weights : 44,100 lbs

50' Boom			60' Boom			70' Boom			80' Boom			90' Boom		
Load Radius (ft)	Boom Angle (deg.)	360° Rated Load (lbs)	Load Radius (ft)	Boom Angle (deg.)	360° Rated Load (lbs)	Load Radius (ft)	Boom Angle (deg.)	360° Rated Load (lbs)	Load Radius (ft)	Boom Angle (deg.)	360° Rated Load (lbs)	Load Radius (ft)	Boom Angle (deg.)	360° Rated Load (lbs)
12.0	81.4	240,000*	13.5	81.4	210,000*	15.0	81.4	190,000*	16.5	81.4	171,000*	18.0	81.4	150,000*
13.0	80.2	220,000*	14.0	80.9	204,000*	16.0	80.5	177,000*	17.0	81.0	163,000*	19.0	80.7	140,000*
14.0	79.0	206,000*	15.0	79.9	190,000*	17.0	79.7	163,000*	18.0	80.3	150,000*	20.0	80.1	135,000*
15.0	77.9	191,000*	16.0	78.9	177,000*	18.0	78.9	150,000*	19.0	79.6	142,100*	22.0	78.8	122,400*
16.0	76.7	177,000*	17.0	78.0	163,000*	19.0	78.0	142,100*	20.0	78.8	135,000*	24.0	77.5	111,500
17.0	75.5	163,000*	18.0	77.0	150,000*	20.0	77.2	135,000*	22.0	77.4	122,400*	26.0	76.2	98,900
18.0	74.3	150,000*	19.0	76.0	142,100*	22.0	75.5	122,700*	24.0	75.9	111,500	28.0	74.8	88,800
19.0	73.1	142,100*	20.0	75.0	135,000*	24.0	73.8	111,700	26.0	74.4	98,900	30.0	73.5	80,400
20.0	71.9	135,000*	22.0	73.0	122,700*	26.0	72.1	99,200	28.0	72.9	88,800	32.0	72.2	73,400
22.0	69.5	122,800*	24.0	71.0	111,700	28.0	70.3	89,000	30.0	71.4	80,400	34.0	70.8	67,400
24.0	67.0	114,900	26.0	69.0	99,200	30.0	68.6	80,600	32.0	69.9	73,400	36.0	69.5	62,300
26.0	64.4	109,900	28.0	66.9	89,200	32.0	66.8	73,800	34.0	68.3	67,400	38.0	68.1	57,900
28.0	61.8	102,700	30.0	64.8	80,900	34.0	65.0	67,900	36.0	66.8	62,300	40.0	66.7	54,000
30.0	59.2	95,200	32.0	62.6	73,800	36.0	63.2	62,800	38.0	65.2	57,900	45.0	63.2	46,000
32.0	56.4	87,800	34.0	60.4	68,100	38.0	61.3	58,400	40.0	63.6	54,200	50.0	59.5	40,100
34.0	53.6	80,000	36.0	58.2	63,000	40.0	59.4	54,400	45.0	59.5	46,200	55.0	55.8	35,400
36.0	50.7	71,900	38.0	55.9	58,600	45.0	54.5	46,500	50.0	55.2	40,100	60.0	51.8	31,500
38.0	47.6	63,700	40.0	53.5	54,600	50.0	49.2	40,500	55.0	50.7	35,400	65.0	47.6	28,400
40.0	44.3	56,900	45.0	47.2	46,700	55.0	43.5	35,900	60.0	45.8	31,700	70.0	43.0	25,700
45.0	35.2	47,100	50.0	40.2	40,700	60.0	37.1	32,100	65.0	40.5	28,600	75.0	38.1	23,500
			55.0	31.9	36,100				70.0	34.6	26,000	80.0	32.5	21,600
Reeves		10	Reeves		9	Reeves		8	Reeves		7	Reeves		6
100' Boom			110' Boom			120' Boom			130' Boom			140' Boom		
Load Radius (ft)	Boom Angle (deg.)	360° Rated Load (lbs)	Load Radius (ft)	Boom Angle (deg.)	360° Rated Load (lbs)	Load Radius (ft)	Boom Angle (deg.)	360° Rated Load (lbs)	Load Radius (ft)	Boom Angle (deg.)	360° Rated Load (lbs)	Load Radius (ft)	Boom Angle (deg.)	360° Rated Load (lbs)
19.5	81.4	137,500*	20.9	81.4	128,600*	22.4	81.4	121,000*	23.9	81.4	100,000*	25.4	81.4	100,000*
20.0	81.1	135,000*	22.0	80.8	122,000*	24.0	80.6	111,100	24.0	81.4	100,000*	26.0	81.2	98,100
22.0	79.9	122,200*	24.0	79.8	111,300	26.0	79.7	98,500	26.0	80.5	98,300	28.0	80.3	87,900
24.0	78.8	111,300	26.0	78.7	98,500	28.0	78.7	88,400	28.0	79.6	88,100	30.0	79.5	79,500
26.0	77.6	98,700	28.0	77.7	88,400	30.0	77.7	80,000	30.0	78.7	79,800	32.0	78.7	72,500
28.0	76.4	88,600	30.0	76.6	80,000	32.0	76.7	72,900	32.0	77.8	72,700	34.0	77.8	66,500
30.0	75.2	80,200	32.0	75.5	72,900	34.0	75.8	67,000	34.0	76.9	66,700	36.0	77.0	61,500
32.0	74.0	73,100	34.0	74.4	67,000	36.0	74.8	61,900	36.0	76.0	61,700	38.0	76.1	57,000
34.0	72.8	67,200	36.0	73.3	61,900	38.0	73.8	57,500	38.0	75.1	57,300	40.0	75.3	53,100
36.0	71.6	62,100	38.0	72.3	57,500	40.0	72.8	53,500	40.0	74.1	53,300	45.0	73.2	45,100
38.0	70.4	57,700	40.0	71.2	53,500	45.0	70.3	45,600	45.0	71.8	45,400	50.0	71.0	39,000
40.0	69.2	53,700	45.0	68.4	45,600	50.0	67.7	39,400	50.0	69.5	39,400	55.0	68.8	34,300
45.0	66.1	45,800	50.0	65.5	39,600	55.0	65.1	34,800	55.0	67.1	34,600	60.0	66.6	30,400
50.0	62.9	39,900	55.0	62.6	34,800	60.0	62.4	30,800	60.0	64.7	30,600	65.0	64.4	27,100
55.0	59.6	35,000	60.0	59.6	31,000	65.0	59.7	27,700	65.0	62.2	27,500	70.0	62.1	24,400
60.0	56.2	31,300	65.0	56.5	27,700	70.0	56.8	25,100	70.0	59.7	24,900	75.0	59.7	22,200
65.0	52.6	27,900	70.0	53.3	25,100	75.0	53.9	22,700	75.0	57.1	22,400	80.0	57.3	20,200
70.0	48.9	25,300	75.0	50.0	22,900	80.0	50.9	20,700	80.0	54.4	20,500	85.0	54.8	18,500
75.0	45.0	23,100	80.0	46.5	20,900	85.0	47.7	19,100	85.0	51.6	18,900	90.0	52.3	16,900
80.0	40.7	21,100	85.0	42.7	19,100	90.0	44.4	17,600	90.0	48.8	17,400	95.0	49.6	15,600
85.0	36.0	19,600	90.0	38.7	17,800	95.0	40.8	16,300	95.0	45.7	16,000	100.0	46.9	14,500
90.0	30.8	18,000	95.0	34.3	16,500	100.0	37.0	15,200	100.0	42.5	14,700	105.0	44.0	13,400
						105.0	32.8	14,100	105.0	39.1	13,800	110.0	40.9	12,500
									110.0	35.5	13,000	115.0	37.7	11,600
									115.0	31.4	12,100	120.0	34.1	11,000
												125.0	30.3	10,300
Reeves		6	Reeves		6	Reeves		5	Reeves		4	Reeves		4

Note: Designed and rated to comply with ANSI Code B30.5
Capacities based on factors other than machine stability such as structural competence are shown by asterisk * in the charts.
Refer to notes on page 24.

CK1200G-3 HDO LIFTING CHART

Main Boom Lift Capacity

Counterweights : 76,320 lbs Carbody weights : 44,100 lbs

150' Boom			160' Boom			170' Boom			180' Boom			190' Boom		
Load Radius (ft)	Boom Angle (deg.)	360° Rated Load (lbs)	Load Radius (ft)	Boom Angle (deg.)	360° Rated Load (lbs)	Load Radius (ft)	Boom Angle (deg.)	360° Rated Load (lbs)	Load Radius (ft)	Boom Angle (deg.)	360° Rated Load (lbs)	Load Radius (ft)	Boom Angle (deg.)	360° Rated Load (lbs)
26.9	81.4	100,000*	28.4	81.4	75,000*	29.9	81.4	75,000*	31.4	81.4	73,400	32.9	81.4	66,300*
26.0	81.0	98,100	30.0	80.8	75,000*	30.0	81.4	75,000*	32.0	81.2	71,800	34.0	81.1	65,400
28.0	80.2	87,900	32.0	80.1	72,300	32.0	80.7	72,000	34.0	80.6	65,900	36.0	80.5	60,400
30.0	79.4	79,500	34.0	79.4	66,300	34.0	80.0	66,100	36.0	79.9	60,600	38.0	79.8	55,900
32.0	78.7	72,500	36.0	78.6	61,200	36.0	79.3	60,800	38.0	79.3	56,200	40.0	79.2	52,000
34.0	77.9	66,500	38.0	77.9	56,800	38.0	78.6	56,400	40.0	78.6	52,200	45.0	77.7	44,000
36.0	77.1	61,500	40.0	77.2	52,900	40.0	77.9	52,400	45.0	77.0	44,300	50.0	76.1	37,900
38.0	76.3	57,000	45.0	75.3	44,900	45.0	76.2	44,500	50.0	75.4	38,100	55.0	74.6	33,000
40.0	74.3	53,100	50.0	73.5	38,800	50.0	74.5	38,500	55.0	73.7	33,200	60.0	73.0	29,100
45.0	72.3	45,100	55.0	71.6	33,900	55.0	72.7	33,700	60.0	72.0	29,500	65.0	71.4	26,000
50.0	70.3	39,000	60.0	69.7	30,200	60.0	70.9	29,700	65.0	70.3	26,200	70.0	69.8	23,100
55.0	68.3	34,300	65.0	67.8	26,800	70.0	69.1	26,400	70.0	68.6	23,500	75.0	68.2	20,900
60.0	66.2	30,400	70.0	65.8	24,200	75.0	67.3	23,800	75.0	66.9	21,100	80.0	66.6	18,900
65.0	64.1	27,100	75.0	63.8	21,800	80.0	65.5	21,600	80.0	65.2	19,100	85.0	64.9	17,100
70.0	61.9	24,400	80.0	61.8	19,800	85.0	63.6	19,600	85.0	63.4	17,600	90.0	63.2	15,600
75.0	59.7	22,200	85.0	59.7	18,200	90.0	61.7	17,800	90.0	61.6	16,000	95.0	61.5	14,300
80.0	57.5	20,200	90.0	57.6	16,700	95.0	59.8	16,300	95.0	59.8	14,700	100.0	59.8	13,200
85.0	55.2	18,500	95.0	55.5	15,400	100.0	57.8	14,900	100.0	57.9	13,400	105.0	58.0	12,100
90.0	52.8	16,900	100.0	53.3	14,100	105.0	55.8	13,800	105.0	56.0	12,300	110.0	56.2	11,000
95.0	50.4	15,600	105.0	51.0	13,200	110.0	53.7	12,700	110.0	54.1	11,400	115.0	54.4	10,100
100.0	47.8	14,500	110.0	48.6	12,100	115.0	51.6	11,600	115.0	52.1	10,500	120.0	52.5	9,400
105.0	45.2	13,400	115.0	46.2	11,200	120.0	49.4	11,000	120.0	50.0	9,900	125.0	50.6	8,800
110.0	42.4	12,500	120.0	43.7	10,500	125.0	47.1	10,100	125.0	47.9	9,000	130.0	48.6	7,900
115.0	39.5	11,600	125.0	41.0	9,700	130.0	44.7	9,400	130.0	45.7	8,300	135.0	46.5	7,200
120.0	36.3	11,000	130.0	38.1	9,200	135.0	42.3	8,800	135.0	43.4	7,700	140.0	44.4	6,900
125.0	32.9	10,300	135.0	35.1	8,500	140.0	39.7	8,100	140.0	41.0	7,200	145.0	42.2	6,100
130.0			140.0	31.8	7,900	145.0	37.0	7,400	145.0	38.5	6,800	150.0	39.9	5,700
						150.0	34.0	7,000	150.0	35.9	6,100	155.0	37.4	5,200
							30.9	6,600	155.0	33.0	5,700	160.0	34.9	4,800
									160.0	30.0	5,200	165.0	32.1	4,400
Reeves		4	Reeves		3	Reeves		3	Reeves		3	Reeves		3
200' Boom			210' Boom			220' Boom			230' Boom					
Load Radius (ft)	Boom Angle (deg.)	360° Rated Load (lbs)	Load Radius (ft)	Boom Angle (deg.)	360° Rated Load (lbs)	Load Radius (ft)	Boom Angle (deg.)	360° Rated Load (lbs)	Load Radius (ft)	Boom Angle (deg.)	360° Rated Load (lbs)			
34.4	81.4	50,000*	35.9	81.4	50,000*	37.4	81.4	48,200*	38.9	81.4	43,200*			
36.0	81.9	50,000*	36.0	81.4	50,000*	38.0	81.2	47,800*	40.0	81.1	42,700*			
38.0	80.4	50,000*	38.0	80.8	50,000*	40.0	80.7	46,700*	45.0	79.9	40,100*			
40.0	79.8	50,000*	40.0	80.3	50,000*	45.0	79.4	43,400	50.0	78.6	37,000			
45.0	78.3	44,000	45.0	78.9	43,800	50.0	78.1	37,400	55.0	77.3	32,100			
50.0	76.8	37,900	50.0	77.5	37,600	55.0	76.7	32,600	60.0	76.0	28,400			
55.0	75.4	33,000	55.0	76.1	32,800	60.0	75.4	28,600	65.0	74.7	25,100			
60.0	73.9	29,300	60.0	74.7	28,800	65.0	74.0	25,300	70.0	73.4	22,200			
65.0	72.4	26,000	65.0	73.2	25,700	70.0	72.7	22,700	75.0	72.1	20,000			
70.0	70.9	23,300	70.0	71.8	22,900	75.0	71.3	20,200	80.0	70.8	18,000			
75.0	69.3	20,900	75.0	70.4	20,700	80.0	69.9	18,200	85.0	69.5	16,300			
80.0	67.8	18,900	80.0	68.9	18,700	85.0	68.5	16,700	90.0	68.2	14,700			
85.0	66.2	17,100	85.0	67.4	16,900	90.0	67.1	15,200	95.0	66.8	13,400			
90.0	64.7	15,600	90.0	66.0	15,400	95.0	65.7	13,800	100.0	65.4	12,300			
95.0	63.1	14,300	95.0	64.4	14,100	100.0	64.2	12,500	105.0	64.1	11,200			
100.0	61.4	13,200	100.0	62.9	12,700	105.0	62.8	11,400	110.0	62.7	10,100			
105.0	59.8	12,100	105.0	61.4	11,900	110.0	61.3	10,500	115.0	61.3	9,200			
110.0	58.1	11,200	110.0	59.8	10,800	115.0	59.8	9,700	120.0	59.8	8,300			
115.0	56.4	10,300	115.0	58.2	9,900	120.0	58.3	8,800	125.0	58.4	7,400			
120.0	54.7	9,400	120.0	56.6	9,000	125.0	56.7	7,900	130.0	56.9	6,800			
125.0	52.9	8,800	125.0	54.9	8,300	130.0	55.2	7,200	135.0	55.4	6,100			
130.0	51.1	7,900	130.0	53.2	7,700	135.0	53.6	6,600	140.0	53.9	5,500			
135.0	49.2	7,200	135.0	51.5	6,800	140.0	51.9	5,900	145.0	52.3	4,800			
140.0	47.3	6,800	140.0	49.7	6,300	145.0	50.2	5,200	150.0	50.7	4,400			
145.0	45.3	6,100	145.0	47.9	5,700	150.0	48.5	4,800	155.0	49.1	3,900			
150.0	43.2	5,700	150.0	46.1	5,200	155.0	46.8	4,400	160.0	47.4	3,500			
155.0	41.1	5,000	155.0	44.1	4,600	160.0	44.9	3,900						
160.0	38.8	4,600	160.0	42.1	4,100	165.0	43.0	3,500						
165.0	36.5	4,100	165.0	40.0	3,700									
170.0	34.0	3,900	170.0	37.8	3,500									
175.0	31.3	3,500												
Reeves		2	Reeves		2	Reeves		2	Reeves		2			

Note: Designed and rated to comply with ANSI Code B30.5
Capacities based on factors other than machine stability such as structural competence are shown by asterisk * in the charts.
Refer to notes on page 24.

Fixed Jib Lift Capacity (without main hook)

Counterweights : 76,320 lbs Carbody weights : 44,100 lbs

90' Boom																							
30 ft Jib						40 ft Jib						50 ft Jib						60 ft Jib					
Offset Angle (deg.)						Offset Angle (deg.)						Offset Angle (deg.)						Offset Angle (deg.)					
10			30			10			30			10			30			10			30		
Load Radius (ft)	Boom Angle (deg.)	Rated Load (lbs)	Load Radius (ft)	Boom Angle (deg.)	Rated Load (lbs)	Load Radius (ft)	Boom Angle (deg.)	Rated Load (lbs)	Load Radius (ft)	Boom Angle (deg.)	Rated Load (lbs)	Load Radius (ft)	Boom Angle (deg.)	Rated Load (lbs)	Load Radius (ft)	Boom Angle (deg.)	Rated Load (lbs)						
30.0	79.9	24,000*				34.0	79.6	24,000*				38.0	79.4	20,000*				45.0	78.0	18,000*			
32.0	78.9	24,000*				36.0	78.7	24,000*				40.0	78.5	20,000*				50.0	76.0	18,000*			
34.0	77.9	24,000*				38.0	77.8	24,000*				45.0	76.4	20,000*				55.0	74.0	18,000*			
36.0	76.9	24,000*				40.0	76.9	24,000*				50.0	74.3	20,000*				60.0	72.0	18,000*			
38.0	75.9	24,000*				45.0	74.6	24,000*				55.0	72.1	20,000*	55.0	78.5	11,400*	65.0	69.9	17,900*	60.0	79.2	9,200*
40.0	74.9	24,000*	40.0	79.4	21,000*	50.0	72.3	24,000*	50.0	77.7	15,400*	60.0	69.9	20,000*	60.0	76.2	11,400*	70.0	67.8	16,600*	65.0	77.0	9,200*
45.0	72.4	24,000*	45.0	76.8	21,000*	55.0	69.9	24,000*	55.0	75.2	15,400*	65.0	67.7	20,000*	65.0	73.9	11,400*	75.0	65.7	15,500*	70.0	74.8	9,200*
50.0	69.9	24,000*	50.0	74.2	21,000*	60.0	67.5	24,000*	60.0	72.8	15,400*	70.0	65.4	19,200*	70.0	71.5	11,400*	80.0	63.5	14,500	75.0	72.6	9,200*
55.0	67.3	24,000*	55.0	71.5	21,000*	65.0	65.0	24,000*	65.0	70.2	15,400*	75.0	63.0	17,900*	75.0	69.1	11,400*	85.0	61.3	13,700	80.0	70.4	9,200*
60.0	64.7	24,000*	60.0	68.8	21,000*	70.0	62.5	23,300*	70.0	67.6	15,100*	80.0	60.7	16,800	80.0	66.6	11,200*	90.0	59.0	13,000	85.0	68.0	9,100*
65.0	61.9	24,000*	65.0	66.0	21,000*	75.0	60.0	21,800*	75.0	65.0	14,400*	85.0	58.2	15,900	85.0	64.0	10,800*	95.0	56.6	12,300	90.0	65.6	8,700*
70.0	59.1	24,000*	70.0	63.1	20,400*	80.0	57.3	20,500	80.0	62.2	13,900*	90.0	55.7	15,100	90.0	61.4	10,400*	100.0	54.2	11,700	95.0	63.2	8,400*
75.0	56.3	23,900	75.0	60.1	19,600*	85.0	54.6	19,400	85.0	59.3	13,500*	95.0	53.0	14,300	95.0	58.6	10,100*	105.0	51.7	11,100	100.0	60.6	8,100*
80.0	53.3	21,900	80.0	57.0	18,900*	90.0	51.7	18,400	90.0	56.3	13,100*	100.0	50.3	13,600	100.0	55.7	9,800*	110.0	49.0	10,600	105.0	58.0	7,900*
85.0	50.1	20,200	85.0	53.7	18,300	95.0	48.7	17,400	95.0	53.2	12,700*	105.0	47.4	13,000	105.0	52.7	9,500*	115.0	46.3	10,100	110.0	55.2	7,700*
90.0	46.8	18,700				100.0	45.6	16,400				110.0	44.4	12,400				120.0	43.4	9,700	115.0	52.2	7,500*
95.0	43.3	17,300				105.0	42.2	15,300				115.0	41.2	11,900				125.0	40.3	9,400			
100.0	39.6	16,100				110.0	38.6	14,300				120.0	37.7	11,500				130.0	36.9	9,000			
105.0	35.4	15,100				115.0	34.6	13,400				125.0	33.9	11,100				135.0	33.3	8,700			
110.0	30.8	14,100																					
Reeves	1		Reeves	1		Reeves	1		Reeves	1		Reeves	1		Reeves	1		Reeves	1		Reeves	1	

90' Boom																	
70 ft Jib																	
Offset Angle (deg.)																	
10			30														
Load Radius (ft)	Boom Angle (deg.)	Rated Load (lbs)	Load Radius (ft)	Boom Angle (deg.)	Rated Load (lbs)												
45.0	79.4	15,700*															
50.0	77.6	15,400*															
55.0	75.7	15,100*															
60.0	73.8	14,800*															
65.0	71.9	14,500*	65.0	79.8	8,100*												
70.0	69.9	14,300*	70.0	77.8	8,100*												
75.0	67.9	13,900*	75.0	75.7	8,100*												
80.0	65.9	13,000	80.0	73.6	8,100*												
85.0	63.9	12,200	85.0	71.5	7,900*												
90.0	61.8	11,500	90.0	69.3	7,600*												
95.0	59.7	10,900	95.0	67.1	7,200*												
100.0	57.5	10,300	100.0	64.8	7,000*												
105.0	55.2	9,800	105.0	62.4	6,800*												
110.0	52.9	9,400	110.0	59.9	6,500*												
115.0	50.4	8,900	115.0	57.3	6,300*												
120.0	47.9	8,500	120.0	54.6	6,200*												
125.0	45.2	8,200	125.0	51.8	6,000*												
130.0	42.9	7,900															
135.0	39.4	7,600															
140.0	36.2	7,300															
145.0	32.6	7,100															
Reeves	1		Reeves	1													

Note: Designed and rated to comply with ANSI Code B30.5
Capacities based on factors other than machine stability such as structural competence are shown by asterisk * in the charts.
Refer to notes on page 24.

CK1200G-3 HDO LIFTING CHART

Fixed Jib Lift Capacity (without main hook)

Counterweights : 76,320 lbs Carbody weights : 44,100 lbs

100' Boom																									
30 ft Jib						40 ft Jib						50 ft Jib						60 ft Jib							
Offset Angle (deg.)						Offset Angle (deg.)						Offset Angle (deg.)						Offset Angle (deg.)							
10			30			10			30			10			30			10			30				
Load Radius (ft)	Boom Angle (deg.)	Rated Load (lbs)	Load Radius (ft)	Boom Angle (deg.)	Rated Load (lbs)	Load Radius (ft)	Boom Angle (deg.)	Rated Load (lbs)	Load Radius (ft)	Boom Angle (deg.)	Rated Load (lbs)	Load Radius (ft)	Boom Angle (deg.)	Rated Load (lbs)	Load Radius (ft)	Boom Angle (deg.)	Rated Load (lbs)	Load Radius (ft)	Boom Angle (deg.)	Rated Load (lbs)	Load Radius (ft)	Boom Angle (deg.)	Rated Load (lbs)		
32.0	79.8	24,000*				36.0	79.5	24,000*				40.0	79.3	20,000*				45.0	78.8	18,000*					
34.0	78.9	24,000*				38.0	78.7	24,000*				45.0	77.4	20,000*				50.0	76.9	18,000*					
36.0	77.9	24,000*				40.0	77.8	24,000*				50.0	75.4	20,000*				55.0	75.1	18,000*					
38.0	77.0	24,000*				45.0	75.7	24,000*				55.0	73.4	20,000*	55.0	79.3	11,400*	60.0	73.2	18,000*					
40.0	76.1	24,000*				50.0	73.6	24,000*	50.0	78.6	15,400*	60.0	71.3	20,000*	60.0	77.2	11,400*	65.0	71.2	18,000*	65.0	77.9	9,200*		
45.0	73.8	24,000*	45.0	77.9	21,000*	55.0	71.4	24,000*	55.0	76.4	15,400*	65.0	69.3	20,000*	65.0	75.1	11,400*	70.0	69.3	17,500*	70.0	75.9	9,200*		
50.0	71.5	24,000*	50.0	75.5	21,000*	60.0	69.2	24,000*	60.0	74.1	15,400*	70.0	67.2	20,000*	70.0	72.9	11,400*	75.0	67.3	16,300*	75.0	73.9	9,200*		
55.0	69.2	24,000*	55.0	73.1	21,000*	65.0	67.0	24,000*	65.0	71.8	15,400*	75.0	65.0	18,900*	75.0	70.7	11,400*	80.0	65.3	15,300*	80.0	71.8	9,200*		
60.0	66.8	24,000*	60.0	70.6	21,000*	70.0	64.7	24,000*	70.0	69.5	15,400*	80.0	62.8	17,800	80.0	68.4	11,200*	85.0	63.3	14,400	85.0	69.6	9,200*		
65.0	64.3	24,000*	65.0	68.1	21,000*	75.0	62.4	23,100*	75.0	67.0	14,900*	85.0	60.6	16,800	85.0	66.1	11,100*	90.0	61.2	13,700	90.0	67.5	8,900*		
70.0	61.8	24,000*	70.0	65.5	21,000*	80.0	60.0	21,800	80.0	64.6	14,300*	90.0	58.3	15,900	90.0	63.7	10,700*	95.0	59.0	12,900	95.0	65.2	8,600*		
75.0	59.2	23,600	75.0	62.8	20,300*	85.0	57.5	20,200	85.0	62.0	13,900*	95.0	56.0	15,100	95.0	61.3	10,400*	100.0	56.8	12,300	100.0	62.9	8,400*		
80.0	56.6	21,600	80.0	60.1	19,600*	90.0	55.0	18,700	90.0	59.4	13,500*	100.0	53.5	14,400	100.0	58.7	10,100*	105.0	54.6	11,700	105.0	60.6	8,100*		
85.0	53.8	19,900	85.0	57.3	19,000	95.0	52.3	17,200	95.0	56.6	13,100*	105.0	51.0	13,700	105.0	56.1	9,800*	110.0	52.2	11,200	110.0	58.1	7,900*		
90.0	51.0	18,400	90.0	54.3	18,400	100.0	49.6	16,000	100.0	53.8	12,700*	110.0	48.4	13,200	110.0	63.3	9,600*	115.0	49.8	10,700	115.0	55.5	7,700*		
95.0	48.0	17,000	95.0	51.2	17,300	105.0	46.8	15,000				115.0	45.6	12,600				120.0	47.3	10,300	120.0	52.9	7,500*		
100.0	44.8	15,800				110.0	43.7	14,000				120.0	42.7	12,100				125.0	44.6	9,900					
105.0	41.5	14,800				115.0	40.5	13,100				125.0	39.6	11,700				130.0	41.8	9,500					
110.0	37.9	13,800				120.0	37.1	12,300				130.0	36.3	11,100				135.0	38.8	9,200					
115.0	33.9	12,900				125.0	33.2	11,600				135.0	32.6	10,400				140.0	35.6	8,900					
																			145.0	32.0	8,600				
Reeves	1		Reeves	1		Reeves	1		Reeves	1		Reeves	1		Reeves	1		Reeves	1		Reeves	1			

100' Boom																	
70 ft Jib																	
Offset Angle (deg.)																	
10			30														
Load Radius (ft)	Boom Angle (deg.)	Rated Load (lbs)	Load Radius (ft)	Boom Angle (deg.)	Rated Load (lbs)												
45.0	80.0	15,800*															
50.0	78.3	15,500*															
55.0	76.6	15,200*															
60.0	74.8	14,900*															
65.0	73.0	14,600*															
70.0	71.2	14,400*	70.0	78.6	8,100*												
75.0	69.3	14,200*	75.0	76.7	8,100*												
80.0	67.5	13,600	80.0	74.7	8,100*												
85.0	65.6	12,800	85.0	72.8	8,000*												
90.0	63.7	12,100	90.0	70.8	7,700*												
95.0	61.7	11,400	95.0	68.7	7,400*												
100.0	59.7	10,900	100.0	66.6	7,200*												
105.0	57.6	10,300	105.0	64.4	6,900*												
110.0	55.5	9,900	110.0	62.2	6,700*												
115.0	53.3	9,400	115.0	59.9	6,500*												
120.0	51.1	9,000	120.0	57.5	6,300*												
125.0	48.7	8,600	125.0	55.0	6,200*												
130.0	46.3	8,300	130.0	52.4	6,000*												
135.0	43.7	8,000															
140.0	41.0	7,700															
145.0	38.1	7,400															
150.0	35.0	7,200															
155.0	31.5	7,000															
Reeves	1		Reeves	1													

Note: Designed and rated to comply with ANSI Code B30.5
Capacities based on factors other than machine stability such as structural competence are shown by asterisk * in the charts.
Refer to notes on page 24.

Fixed Jib Lift Capacity (without main hook)

Counterweights : 76,320 lbs Carbody weights : 44,100 lbs

110' Boom																								
30 ft Jib						40 ft Jib						50 ft Jib						60 ft Jib						
Offset Angle (deg.)						Offset Angle (deg.)						Offset Angle (deg.)						Offset Angle (deg.)						
10			30			10			30			10			30			10			30			
Load Radius (ft)	Boom Angle (deg.)	Rated Load (lbs)	Load Radius (ft)	Boom Angle (deg.)	Rated Load (lbs)	Load Radius (ft)	Boom Angle (deg.)	Rated Load (lbs)	Load Radius (ft)	Boom Angle (deg.)	Rated Load (lbs)	Load Radius (ft)	Boom Angle (deg.)	Rated Load (lbs)	Load Radius (ft)	Boom Angle (deg.)	Rated Load (lbs)							
34.0	79.7	24,000*				38.0	79.5	24,000*				45.0	78.2	20,000*				45.0	79.5	18,000*				
36.0	78.8	24,000*				40.0	78.7	24,000*				50.0	76.3	20,000*				50.0	77.7	18,000*				
38.0	78.0	24,000*				45.0	76.7	24,000*				55.0	74.4	20,000*				55.0	76.0	18,000*				
40.0	77.1	24,000*				50.0	74.7	24,000*	50.0	79.4	15,400*	60.0	72.6	20,000*				60.0	74.2	18,000*				
45.0	75.0	24,000*	45.0	78.8	21,000*	55.0	72.7	24,000*	55.0	77.4	15,400*	65.0	70.6	20,000*	60.0	78.1	11,400*	65.0	72.4	18,000*	65.0	78.7	9,200*	
50.0	72.9	24,000*	50.0	76.6	21,000*	60.0	70.7	24,000*	60.0	75.3	15,400*	70.0	68.7	20,000*	65.0	76.1	11,400*	70.0	70.6	18,000*	70.0	76.8	9,200*	
55.0	70.7	24,000*	55.0	74.4	21,000*	65.0	68.6	24,000*	65.0	73.2	15,400*	75.0	66.7	19,800	70.0	74.1	11,400*	75.0	68.8	17,000*	75.0	74.9	9,200*	
60.0	68.5	24,000*	60.0	72.1	21,000*	70.0	66.5	24,000*	70.0	71.0	15,400*	80.0	64.7	18,700	75.0	72.1	11,400*	80.0	66.9	16,000	80.0	73.0	9,200*	
65.0	66.3	24,000*	65.0	69.8	21,000*	75.0	64.4	23,600	75.0	68.8	15,200*	85.0	62.7	17,700	80.0	70.0	11,400*	85.0	65.0	15,100	85.0	71.0	9,200*	
70.0	64.0	24,000*	70.0	67.5	21,000*	80.0	62.2	21,600	80.0	66.5	14,700*	90.0	60.6	16,700	85.0	67.9	11,300*	90.0	63.1	14,300	90.0	69.0	9,200*	
75.0	61.7	23,300	75.0	65.1	20,900*	85.0	60.0	19,900	85.0	64.2	14,300*	95.0	58.4	15,900	90.0	65.7	11,000*	95.0	61.1	13,600	95.0	67.0	8,900*	
80.0	59.3	21,300	80.0	62.6	20,200*	90.0	57.7	18,300	90.0	61.9	13,800*	100.0	56.2	15,100	95.0	63.5	10,600*	100.0	59.1	12,900	100.0	64.9	8,600*	
85.0	56.8	19,600	85.0	60.1	19,500	95.0	55.3	16,900	95.0	59.4	13,400*	105.0	54.0	14,500	100.0	61.2	10,300*	105.0	57.0	12,300	105.0	62.7	8,300*	
90.0	54.3	18,100	90.0	57.5	18,400	100.0	52.9	15,700	100.0	56.9	13,100*	110.0	51.6	13,900	105.0	58.8	10,000*	110.0	54.9	11,800	110.0	60.5	8,100*	
95.0	51.7	16,600	95.0	54.8	17,000	105.0	50.4	14,600	105.0	54.3	12,800	115.0	49.2	12,900	110.0	56.4	9,800*	115.0	52.7	11,300	115.0	58.2	7,900*	
100.0	48.9	15,500	100.0	51.9	15,700	110.0	47.8	13,700				120.0	46.7	12,100	115.0	53.8	9,600*	120.0	50.5	10,800	120.0	55.9	7,700*	
105.0	46.1	14,400				115.0	45.0	12,700				125.0	44.0	11,400				125.0	48.1	10,400	125.0	53.4	7,500*	
110.0	43.1	13,400				120.0	42.1	11,900				130.0	41.2	10,700				130.0	45.7	10,000				
115.0	39.9	12,500				125.0	39.0	11,200				135.0	38.2	10,100				135.0	43.1	9,700				
120.0	36.4	11,700				130.0	35.7	10,600				140.0	35.0	9,500				140.0	40.4	9,300				
125.0	32.6	11,000				135.0	32.0	10,000				145.0	31.5	9,000				145.0	37.5	9,100				
																			150.0	34.4	8,600			
																			155.0	31.0	8,100			
Reeves	1		Reeves	1		Reeves	1		Reeves	1		Reeves	1		Reeves	1		Reeves	1		Reeves	1		

110' Boom																	
70 ft Jib																	
Offset Angle (deg.)																	
10			30														
Load Radius (ft)	Boom Angle (deg.)	Rated Load (lbs)	Load Radius (ft)	Boom Angle (deg.)	Rated Load (lbs)												
50.0	79.0	15,600*															
55.0	77.3	15,300*															
60.0	75.7	15,000*															
65.0	74.0	14,800*															
70.0	72.3	14,500*	70.0	79.3	8,100*												
75.0	70.6	14,300*	75.0	77.5	8,100*												
80.0	68.8	14,100	80.0	75.7	8,100*												
85.0	67.1	13,400	85.0	73.9	8,100*												
90.0	65.3	12,700	90.0	72.0	7,900*												
95.0	63.4	12,000	95.0	70.1	7,600*												
100.0	61.6	11,400	100.0	68.2	7,400*												
105.0	59.7	10,900	105.0	66.2	7,100*												
110.0	57.8	10,400	110.0	64.2	6,900*												
115.0	55.8	9,900	115.0	62.1	6,700*												
120.0	53.7	9,500	120.0	59.9	6,50*												
125.0	51.6	9,100	125.0	57.7	6,300*												
130.0	49.4	8,700	130.0	55.4	6,200*												
135.0	47.2	8,400	135.0	53.0	6,000*												
140.0	44.8	8,100															
145.0	42.3	7,800															
150.0	39.7	7,600															
155.0	36.9	7,300															
160.0	33.8	7,100															
165.0	30.5	6,900															
Reeves	1		Reeves	1													

Note: Designed and rated to comply with ANSI Code B30.5
Capacities based on factors other than machine stability such as structural competence are shown by asterisk * in the charts.
Refer to notes on page 24.

CK1200G-3 HDO LIFTING CHART

Fixed Jib Lift Capacity (without main hook)

Counterweights : 76,320 lbs Carbody weights : 44,100 lbs

120' Boom																									
30 ft Jib						40 ft Jib						50 ft Jib						60 ft Jib							
Offset Angle (deg.)						Offset Angle (deg.)						Offset Angle (deg.)						Offset Angle (deg.)							
10			30			10			30			10			30			10			30				
Load Radius (ft)	Boom Angle (deg.)	Rated Load (lbs)	Load Radius (ft)	Boom Angle (deg.)	Rated Load (lbs)	Load Radius (ft)	Boom Angle (deg.)	Rated Load (lbs)	Load Radius (ft)	Boom Angle (deg.)	Rated Load (lbs)	Load Radius (ft)	Boom Angle (deg.)	Rated Load (lbs)	Load Radius (ft)	Boom Angle (deg.)	Rated Load (lbs)	Load Radius (ft)	Boom Angle (deg.)	Rated Load (lbs)	Load Radius (ft)	Boom Angle (deg.)	Rated Load (lbs)		
36.0	79.6	24,000*				40.0	79.4	24,000*				45.0	78.9	20,000*				50.0	78.4	18,000*					
38.0	78.8	24,000*				45.0	77.6	24,000*				50.0	77.1	20,000*				55.0	76.8	18,000*					
40.0	78.0	24,000*				50.0	75.7	24,000*				55.0	75.4	20,000*				60.0	75.1	18,000*					
45.0	76.1	24,000*	45.0	79.6	21,000*	55.0	73.8	24,000*	55.0	78.2	15,400*	60.0	73.6	20,000*	60.0	78.8	11,400*	65.0	73.4	18,000*	65.0	79.4	9,200*		
50.0	74.1	24,000*	50.0	77.5	21,000*	60.0	71.9	24,000*	60.0	76.3	15,400*	65.0	71.8	20,000*	65.0	77.0	11,400*	70.0	71.7	18,000*	70.0	77.6	9,200*		
55.0	72.1	24,000*	55.0	75.5	21,000*	65.0	70.0	24,000*	65.0	74.3	15,400*	70.0	70.0	20,000*	70.0	75.1	11,400*	75.0	70.0	17,800*	75.0	75.9	9,200*		
60.0	70.0	24,000*	60.0	73.4	21,000*	70.0	68.1	24,000*	70.0	72.3	15,400*	75.0	68.2	20,000*	75.0	73.2	11,400*	80.0	68.3	16,700*	80.0	74.1	9,200*		
65.0	68.0	24,000*	65.0	71.3	21,000*	75.0	66.1	23,400*	75.0	70.3	15,400*	80.0	66.3	19,500*	80.0	71.3	11,400*	85.0	66.5	15,800*	85.0	72.2	9,200*		
70.0	65.9	24,000*	70.0	69.2	21,000*	80.0	64.1	21,400*	80.0	68.2	15,100*	85.0	64.4	18,500*	85.0	69.4	11,400*	90.0	64.7	15,000*	90.0	70.4	9,200*		
75.0	63.7	23,100	75.0	67.0	21,000*	85.0	62.1	19,700*	85.0	66.1	14,600*	90.0	62.5	17,600*	90.0	67.4	11,200*	95.0	62.9	14,200*	95.0	68.5	9,100*		
80.0	61.6	21,100	80.0	64.7	20,800*	90.0	60.0	18,200*	90.0	64.0	14,200*	95.0	60.5	16,700*	95.0	65.3	10,900*	100.0	61.0	13,500*	100.0	66.6	8,800*		
85.0	59.3	19,400	85.0	62.4	19,900	95.0	57.8	16,700*	95.0	61.7	13,800*	100.0	58.5	15,700*	100.0	63.2	10,600*	105.0	59.2	12,900*	105.0	64.6	8,500*		
90.0	57.0	17,900	90.0	60.1	18,300	100.0	55.6	15,500*	100.0	59.5	13,400*	105.0	56.5	14,700*	105.0	61.1	10,300*	110.0	57.2	12,400*	110.0	62.6	8,300*		
95.0	54.7	16,500	95.0	57.7	16,800	105.0	53.4	14,500*	105.0	57.1	13,100	110.0	54.4	13,700*	110.0	58.9	10,000*	115.0	55.2	11,800*	115.0	60.5	8,100*		
100.0	52.3	15,300	100.0	55.2	15,600	110.0	51.0	13,500*	110.0	54.7	12,800	115.0	52.2	12,700*	115.0	56.6	9,800*	120.0	53.2	11,300*	120.0	58.4	7,900*		
105.0	49.7	14,200	105.0	52.6	14,500	115.0	48.6	12,600*	115.0	52.2	12,500	120.0	49.9	11,900*	120.0	54.3	9,600*	125.0	51.1	10,900*	125.0	56.1	7,700*		
110.0	47.1	13,300				120.0	46.1	11,800*				125.0	47.6	11,200*	125.0	51.8	9,400*	130.0	48.9	10,500*	130.0	53.8	7,500*		
115.0	44.4	12,300				125.0	43.4	11,000*				130.0	45.1	10,500*				135.0	46.6	10,000*	135.0	51.4	7,400*		
120.0	41.5	11,600				130.0	40.6	10,400*				135.0	42.6	9,900*				140.0	44.3	9,400*					
125.0	38.4	10,800				135.0	37.7	9,800*				140.0	39.9	9,300*				145.0	41.8	8,900*					
130.0	35.1	10,200				140.0	34.4	9,200*				145.0	37.0	8,800*				150.0	39.2	8,400*					
135.0	31.4	9,600										150.0	33.8	8,300*				155.0	36.3	7,900*					
																			160.0	33.3	7,500*				
Reeves	1		Reeves	1		Reeves	1		Reeves	1		Reeves	1		Reeves	1		Reeves	1		Reeves	1			

120' Boom																	
70 ft Jib																	
Offset Angle (deg.)																	
10			30														
Load Radius (ft)	Boom Angle (deg.)	Rated Load (lbs)	Load Radius (ft)	Boom Angle (deg.)	Rated Load (lbs)												
50.0	79.6	15,700*															
55.0	78.0	15,400*															
60.0	76.4	15,100*															
65.0	74.9	14,900*															
70.0	73.3	14,700*	70.0	79.9	8,100*												
75.0	71.7	14,400	75.0	78.2	8,100*												
80.0	70.0	14,200	80.0	76.5	8,100*												
85.0	68.4	14,000	85.0	74.8	8,100*												
90.0	66.7	13,300	90.0	73.1	8,100*												
95.0	65.0	12,500	95.0	71.3	7,800*												
100.0	63.3	11,900	100.0	69.5	7,500*												
105.0	61.5	11,400	105.0	67.7	7,300*												
110.0	59.7	10,900	110.0	65.8	7,000*												
115.0	57.9	10,400	115.0	63.9	6,900*												
120.0	56.0	9,900	120.0	61.9	6,700*												
125.0	54.1	9,500	125.0	59.9	6,500*												
130.0	52.1	9,200	130.0	57.8	6,300*												
135.0	50.1	8,800	135.0	55.7	6,200*												
140.0	47.9	8,500	140.0	53.5	6,000*												
145.0	45.7	8,200	145.0	51.1	5,900*												
150.0	43.5	7,900															
155.0	41.0	7,700															
160.0	38.5	7,400															
165.0	35.8	7,200															
170.0	32.8	6,800															
Reeves	1		Reeves	1													

Note: Designed and rated to comply with ANSI Code B30.5
Capacities based on factors other than machine stability such as structural competence are shown by asterisk * in the charts.
Refer to notes on page 24.

Fixed Jib Lift Capacity (without main hook)

Counterweights : 76,320 lbs Carbody weights : 44,100 lbs

130' Boom																								
30 ft Jib						40 ft Jib						50 ft Jib						60 ft Jib						
Offset Angle (deg.)						Offset Angle (deg.)						Offset Angle (deg.)						Offset Angle (deg.)						
10			30			10			30			10			30			10			30			
Load Radius (ft)	Boom Angle (deg.)	Rated Load (lbs)	Load Radius (ft)	Boom Angle (deg.)	Rated Load (lbs)	Load Radius (ft)	Boom Angle (deg.)	Rated Load (lbs)	Load Radius (ft)	Boom Angle (deg.)	Rated Load (lbs)	Load Radius (ft)	Boom Angle (deg.)	Rated Load (lbs)	Load Radius (ft)	Boom Angle (deg.)	Rated Load (lbs)	Load Radius (ft)	Boom Angle (deg.)	Rated Load (lbs)	Load Radius (ft)	Boom Angle (deg.)	Rated Load (lbs)	
38.0	79.5	24,000*				45.0	78.3	24,000*				45.0	79.5	20,000*				50.0	79.0	18,000*				
40.0	78.8	24,000*				50.0	76.6	24,000*				50.0	77.9	20,000*				55.0	77.5	18,000*				
45.0	76.9	24,000*				55.0	74.8	24,000*	55.0	79.0	15,400*	55.0	76.2	20,000*				60.0	75.9	18,000*				
50.0	75.1	24,000*	50.0	78.4	21,000*	60.0	73.0	24,000*	60.0	77.1	15,400*	60.0	74.6	20,000*	60.0	79.5	11,400*	65.0	74.3	18,000*				
55.0	73.2	24,000*	55.0	76.5	21,000*	65.0	71.3	24,000*	65.0	75.3	15,400*	65.0	72.9	20,000*	65.0	77.8	11,400*	70.0	72.7	18,000*	70.0	78.3	9,200*	
60.0	71.3	24,000*	60.0	74.5	21,000*	70.0	69.4	24,000*	70.0	73.5	15,400*	70.0	71.2	20,000*	70.0	76.0	11,400*	75.0	71.1	18,000*	75.0	76.7	9,200*	
65.0	69.4	24,000*	65.0	72.6	21,000*	75.0	67.6	23,100	75.0	71.6	15,400*	75.0	69.5	20,000*	75.0	74.3	11,400*	80.0	69.5	17,400	80.0	75.0	9,200*	
70.0	67.5	24,000*	70.0	70.6	21,000*	80.0	65.8	21,100	80.0	69.7	15,400*	80.0	67.7	20,000*	80.0	72.5	11,400*	85.0	67.9	16,500	85.0	73.3	9,200*	
75.0	65.5	22,800	75.0	68.6	21,000*	85.0	63.9	19,400	85.0	67.7	15,000*	85.0	66.0	19,300	85.0	70.7	11,400*	90.0	66.2	15,600	90.0	71.6	9,200*	
80.0	63.5	20,800	80.0	66.5	21,000*	90.0	61.9	17,900	90.0	65.7	14,500*	90.0	64.2	18,100	90.0	68.8	11,400*	95.0	64.5	14,800	95.0	69.8	9,200*	
85.0	61.5	19,100	85.0	64.4	19,600	95.0	60.0	16,400	95.0	63.7	14,100*	95.0	62.4	16,600	95.0	66.9	11,100*	100.0	62.7	14,100	100.0	68.0	9,000*	
90.0	59.4	17,600	90.0	62.3	18,000	100.0	58.0	15,200	100.0	61.6	13,800*	100.0	60.5	15,400	100.0	65.0	10,800*	105.0	61.0	13,500	105.0	66.2	8,700*	
95.0	57.2	16,200	95.0	60.1	16,600	105.0	55.9	14,100	105.0	59.5	13,400	105.0	58.6	14,300	105.0	63.0	10,500*	110.0	59.2	12,900	110.0	64.3	8,500*	
100.0	55.0	15,000	100.0	57.8	15,300	110.0	53.8	13,200	110.0	57.3	13,100	110.0	56.7	13,400	110.0	61.0	10,300*	115.0	57.4	12,400	115.0	62.4	8,200*	
105.0	52.8	13,900	105.0	55.5	14,200	115.0	51.6	12,200	115.0	55.1	12,600	115.0	54.7	12,400	115.0	59.0	10,000*	120.0	55.5	11,800	120.0	60.5	8,000*	
110.0	50.4	12,900	110.0	53.1	13,200	120.0	49.4	11,400	120.0	52.7	11,800	120.0	52.6	11,600	115.0	56.8	9,800*	125.0	53.6	11,000	125.0	58.5	7,900*	
115.0	48.0	12,000				125.0	47.0	10,700				125.0	50.5	10,900	120.0	54.6	9,600	130.0	51.6	10,300	130.0	56.4	7,700*	
120.0	45.5	11,200				130.0	44.6	10,000				130.0	48.4	10,200	125.0	52.3	9,400	135.0	49.5	9,700	135.0	54.2	7,500*	
125.0	42.8	10,500				135.0	42.0	9,400				135.0	46.1	9,600	130.0			140.0	47.4	9,100	140.0	52.0	7,400*	
130.0	40.1	9,800				140.0	39.3	8,800				140.0	43.7	9,000				145.0	45.2	8,600				
135.0	37.1	9,200				145.0	36.4	8,300				145.0	41.2	8,400				150.0	42.9	8,100				
140.0	33.9	8,600				150.0	33.3	7,800				150.0	38.6	8,000				155.0	40.5	7,600				
												155.0	35.8	7,500				160.0	38.0	7,200				
												160.0	32.8	7,000				165.0	35.3	6,700				
																		170.0	32.3	6,400				
Reeves	1		Reeves	1		Reeves	1		Reeves	1		Reeves	1		Reeves	1		Reeves	1		Reeves	1		

130' Boom																	
70 ft Jib																	
Offset Angle (deg.)																	
10			30														
Load Radius (ft)	Boom Angle (deg.)	Rated Load (lbs)	Load Radius (ft)	Boom Angle (deg.)	Rated Load (lbs)												
55.0	78.6	15,500*															
60.0	77.1	15,200*															
65.0	75.6	15,000*															
70.0	74.1	14,700*															
75.0	72.6	14,500*	75.0	78.9	8,100*												
80.0	71.1	14,300	80.0	77.3	8,100*												
85.0	69.5	14,100	85.0	75.7	8,100*												
90.0	68.0	13,800	90.0	74.0	8,100*												
95.0	66.4	13,100	95.0	72.4	7,900*												
100.0	64.7	12,400	100.0	70.7	7,700*												
105.0	63.1	11,900	105.0	69.0	7,400*												
110.0	61.4	11,300	110.0	67.3	7,200*												
115.0	59.7	10,800	115.0	65.5	7,000*												
120.0	58.0	10,400	120.0	63.7	6,800*												
125.0	56.2	10,000	125.0	61.8	6,600*												
130.0	54.4	9,600	130.0	59.9	6,500*												
135.0	52.5	9,200	135.0	58.0	6,300*												
140.0	50.6	8,900	140.0	56.0	6,200*												
145.0	48.6	8,600	145.0	53.9	6,000												
150.0	46.6	8,200	150.0	51.7	5,900												
155.0	44.4	7,700															
160.0	42.2	7,200															
165.0	39.9	6,800															
170.0	37.4	6,500															
175.0	34.7	6,100															
180.0	31.9	5,700															
Reeves	1		Reeves	1													

Note: Designed and rated to comply with ANSI Code B30.5
Capacities based on factors other than machine stability such as structural competence are shown by asterisk * in the charts.
Refer to notes on page 24.

CK1200G-3 HDO LIFTING CHART

Fixed Jib Lift Capacity (without main hook)

Counterweights : 76,320 lbs Carbody weights : 44,100 lbs

140' Boom																								
30 ft Jib						40 ft Jib						50 ft Jib						60 ft Jib						
Offset Angle (deg.)						Offset Angle (deg.)						Offset Angle (deg.)						Offset Angle (deg.)						
10			30			10			30			10			30			10			30			
Load Radius (ft)	Boom Angle (deg.)	Rated Load (lbs)	Load Radius (ft)	Boom Angle (deg.)	Rated Load (lbs)	Load Radius (ft)	Boom Angle (deg.)	Rated Load (lbs)	Load Radius (ft)	Boom Angle (deg.)	Rated Load (lbs)	Load Radius (ft)	Boom Angle (deg.)	Rated Load (lbs)	Load Radius (ft)	Boom Angle (deg.)	Rated Load (lbs)	Load Radius (ft)	Boom Angle (deg.)	Rated Load (lbs)	Load Radius (ft)	Boom Angle (deg.)	Rated Load (lbs)	
40.0	79.4	24,000*				45.0	79.0	24,000*				50.0	78.5	20,000*				50.0	79.6	18,000*				
45.0	77.7	24,000*				50.0	77.3	24,000*				55.0	77.0	20,000*				55.0	78.1	18,000*				
50.0	76.0	24,000*				55.0	75.7	24,000*	55.0	79.6	15,400*	60.0	75.4	20,000*				60.0	76.6	18,000*				
55.0	74.2	24,000*	50.0	79.1	21,000*	60.0	74.0	24,000*	60.0	77.9	15,400*	65.0	73.8	20,000*	65.0	78.5	11,400*	65.0	75.2	18,000*				
60.0	72.5	240,00*	55.0	77.3	21,000*	65.0	72.3	24,000*	65.0	76.2	15,400*	70.0	72.2	20,000*	70.0	76.8	11,400*	70.0	73.6	18,000*			70.0	79.0
65.0	70.7	24,000*	60.0	75.5	21,000*	70.0	70.6	24,000*	70.0	74.5	15,400*	75.0	70.6	20,000*	75.0	75.2	11,400*	75.0	72.1	18,000*	75.0	77.4		9,200*
70.0	68.9	24,000*	65.0	73.7	21,000*	75.0	68.9	22,900	75.0	72.7	15,400*	80.0	69.0	20,000*	80.0	73.5	11,400*	80.0	70.6	18,000*	80.0	75.8		9,200*
75.0	67.0	22,500	70.0	71.8	21,000*	80.0	67.2	20,800	80.0	70.9	15,400*	85.0	67.3	19,400	85.0	71.8	11,400*	85.0	69.0	17,100	85.0	74.2		9,200*
80.0	65.2	20,500	75.0	70.0	21,000*	85.0	65.4	19,100	85.0	69.1	15,300*	90.0	65.7	17,800	90.0	70.1	11,400*	90.0	67.5	16,300	90.0	72.6		9,200*
85.0	63.3	18,800	80.0	68.1	21,000*	90.0	63.6	17,600	90.0	67.3	14,800*	95.0	64.0	16,400	95.0	68.3	11,300*	95.0	65.9	15,400	95.0	71.0		9,200*
90.0	61.4	17,300	85.0	66.1	19,400	95.0	61.8	16,100	95.0	65.4	14,400*	100.0	62.2	15,200	100.0	66.5	11,000*	100.0	64.3	14,700	100.0	69.3		9,100*
95.0	59.4	15,900	90.0	64.2	17,800	100.0	60.0	14,900	100.0	63.5	14,100*	105.0	60.5	14,100	105.0	64.7	10,800*	105.0	62.6	14,100	105.0	67.6		8,900*
100.0	57.4	14,700	95.0	62.1	16,300	105.0	58.1	13,900	105.0	61.5	13,700	110.0	58.7	13,100	110.0	62.9	10,500*	110.0	60.9	13,200	110.0	65.9		8,800*
105.0	55.3	13,600	100.0	60.1	15,100	110.0	56.1	12,900	110.0	59.5	13,400	115.0	56.9	12,100	115.0	61.0	10,200*	115.0	59.2	12,300	115.0	64.1		8,400*
110.0	53.2	12,600	105.0	58.0	14,000	115.0	54.2	11,900	115.0	57.5	12,400	120.0	55.0	11,300	120.0	59.0	10,000*	120.0	57.5	11,500	120.0	62.3		8,200*
115.0	51.0	11,700	110.0	55.8	13,000	120.0	52.1	11,100	120.0	55.4	11,500	125.0	53.1	10,600	125.0	57.0	9,800	125.0	55.7	10,700	125.0	60.4		8,000*
120.0	48.8	10,900	115.0	53.6	12,000	125.0	50.0	10,400	125.0	53.2	10,800	130.0	51.1	9,900	130.0	55.0	9,600	130.0	53.9	10,000	130.0	58.5		7,800*
125.0	46.5	10,200	120.0	51.2	11,200	130.0	47.8	9,700				135.0	49.0	9,300	135.0	52.8	9,500	135.0	52.0	9,400	135.0	56.6		7,700*
130.0	44.0	9,500				135.0	45.6	9,100				140.0	46.9	8,700				140.0	50.1	8,800	140.0	54.6		7,500*
135.0	41.5	8,900				140.0	43.2	8,500				145.0	44.7	8,200				145.0	48.1	8,300	145.0	52.5		7,400
140.0	38.8	8,300				145.0	40.7	8,000				150.0	42.4	7,600				150.0	46.1	7,800				
145.0	35.9	7,800				150.0	38.1	7,500				155.0	40.0	7,200				155.0	44.0	7,300				
150.0	32.8	7,300				155.0	35.3	7,000				160.0	37.5	6,700				160.0	41.7	6,900				
						160.0	32.3	6,600				165.0	34.8	6,300				165.0	39.4	6,500				
												170.0	31.8	6,000				170.0	36.9	6,100				
																		175.0	34.3	5,700				
																		180.0	31.4	5,400				
Reeves	1		Reeves	1		Reeves	1		Reeves	1		Reeves	1		Reeves	1		Reeves	1		Reeves	1		

140' Boom																	
70 ft Jib																	
Offset Angle (deg.)																	
10			30														
Load Radius (ft)	Boom Angle (deg.)	Rated Load (lbs)	Load Radius (ft)	Boom Angle (deg.)	Rated Load (lbs)												
55.0	79.2	15,500*															
60.0	77.8	15,300*															
65.0	76.4	15,100*															
70.0	74.9	14,900*															
75.0	73.5	14,600	75.0	79.4	8,100*												
80.0	72.0	14,400	80.0	77.9	8,100*												
85.0	70.6	14,200	85.0	76.4	8,100*												
90.0	69.1	14,100	90.0	74.9	8,100*												
95.0	67.6	13,600	95.0	73.3	8,000*												
100.0	66.1	12,900	100.0	71.8	7,800*												
105.0	64.5	12,300	105.0	70.2	7,600*												
110.0	62.9	11,800	110.0	68.5	7,300*												
115.0	61.4	11,300	115.0	66.9	7,100*												
120.0	59.7	10,800	120.0	65.2	6,900*												
125.0	58.1	10,400	125.0	63.5	6,800*												
130.0	56.4	10,000	130.0	61.7	6,600*												
135.0	54.7	9,500	135.0	59.9	6,500*												
140.0	52.9	8,900	140.0	58.1	6,300*												
145.0	51.1	8,400	145.0	56.2	6,200												
150.0	49.2	7,900	150.0	54.2	6,100												
155.0	47.3	7,400	155.0	52.2	5,900												
160.0	45.3	6,900															
165.0	43.2	6,500															
170.0	41.1	6,100															
175.0	38.8	5,800															
180.0	36.4	5,400															
185.0	33.8	5,100															
190.0	31.0	4,800															
Reeves	1		Reeves	1													

Note: Designed and rated to comply with ANSI Code B30.5
 Capacities based on factors other than machine stability such as structural competence are shown by asterisk * in the charts.
 Refer to notes on page 24.

Fixed Jib Lift Capacity (without main hook)

Counterweights : 76,320 lbs Carbody weights : 44,100 lbs

150' Boom																							
30 ft Jib						40 ft Jib						50 ft Jib						60 ft Jib					
Offset Angle (deg.)						Offset Angle (deg.)						Offset Angle (deg.)						Offset Angle (deg.)					
10			30			10			30			10			30			10			30		
Load Radius (ft)	Boom Angle (deg.)	Rated Load (lbs)	Load Radius (ft)	Boom Angle (deg.)	Rated Load (lbs)	Load Radius (ft)	Boom Angle (deg.)	Rated Load (lbs)	Load Radius (ft)	Boom Angle (deg.)	Rated Load (lbs)	Load Radius (ft)	Boom Angle (deg.)	Rated Load (lbs)	Load Radius (ft)	Boom Angle (deg.)	Rated Load (lbs)						
45.0	78.4	24,000*				45.0	79.6	24,000*				50.0	79.1	20,000*				55.0	78.7	18,000*			
50.0	76.8	24,000*				50.0	78.0	24,000*				55.0	77.6	20,000*				60.0	77.3	18,000*			
55.0	75.1	24,000*				55.0	76.5	24,000*				60.0	76.2	20,000*				65.0	75.9	18,000*			
60.0	73.5	24,000*				60.0	74.9	24,000*				65.0	74.7	20,000*	65.0	79.1	11,400*	70.0	74.5	18,000*	70.0	79.5	9,200*
65.0	71.8	24,000*	50.0	79.7	21,000*	65.0	73.3	24,000*	60.0	77.0	15,400*	70.0	73.2	20,000*	70.0	77.5	11,400*	75.0	73.0	18,000*	75.0	78.1	9,200*
70.0	70.1	24,000*	60.0	76.3	21,000*	70.0	71.7	24,000*	70.0	75.3	15,400*	75.0	71.6	20,000*	75.0	76.0	11,400*	80.0	71.6	18,000*	80.0	76.6	9,200*
75.0	68.4	22,200	70.0	72.9	21,000*	75.0	70.1	22,500	75.0	73.7	15,400*	80.0	70.1	20,000	80.0	74.4	11,400*	85.0	70.1	17,800	85.0	75.1	9,200*
80.0	66.7	20,200	80.0	68.5	20,500	80.0	68.5	20,500	80.0	72.0	15,400*	85.0	68.5	19,000	85.0	72.8	11,400*	90.0	68.6	16,900	90.0	73.5	9,200*
85.0	64.9	18,400	90.0	69.4	20,800	85.0	66.8	18,800	85.0	70.3	15,400*	90.0	67.0	17,500	90.0	71.2	11,400*	95.0	67.1	16,000	95.0	72.0	9,200*
90.0	63.1	16,900	100.0	67.6	19,000	90.0	65.2	17,200	90.0	68.6	15,100*	95.0	65.4	16,000	95.0	69.5	11,400*	100.0	65.6	15,000	100.0	70.4	9,200*
95.0	61.3	15,500	110.0	65.8	17,500	95.0	63.5	15,800	95.0	66.9	14,700*	100.0	63.8	14,800	100.0	67.9	11,300*	105.0	64.0	13,900	105.0	68.8	9,000*
100.0	59.4	14,300	120.0	63.9	16,000	100.0	61.7	14,600	100.0	65.1	14,300	105.0	62.1	13,700	105.0	66.2	11,000*	110.0	62.5	12,900	110.0	67.2	8,800*
105.0	57.5	13,200	130.0	62.0	14,700	105.0	60.0	13,500	105.0	63.3	14,000	110.0	60.5	12,700	110.0	64.5	10,700*	115.0	60.9	11,900	115.0	65.6	8,600*
110.0	55.6	12,300	140.0	60.1	13,600	110.0	58.2	12,500	110.0	61.4	13,000	115.0	58.8	11,800	115.0	62.7	10,400*	120.0	59.3	11,100	120.0	63.9	8,400*
115.0	53.6	11,300	150.0	58.1	12,600	115.0	56.4	11,600	115.0	59.6	12,100	120.0	57.0	11,000	120.0	60.9	10,200*	125.0	57.6	10,400	125.0	62.2	8,200*
120.0	51.6	10,500	160.0	56.1	11,700	120.0	54.5	10,800	120.0	57.6	11,200	125.0	55.2	10,200	125.0	59.1	10,000	130.0	55.9	9,700	130.0	60.4	8,000*
125.0	49.5	9,800	170.0	54.0	10,800	125.0	52.6	10,000	125.0	55.6	10,400	130.0	53.4	9,500	130.0	57.2	9,800	135.0	54.2	9,100	135.0	58.6	7,800*
130.0	47.3	9,100	180.0	51.8	10,100	130.0	50.6	9,400	130.0	53.6	9,700	135.0	51.6	8,900	135.0	55.3	9,400	140.0	52.5	8,400	140.0	56.8	7,700
135.0	45.0	8,500				135.0	48.5	8,700				140.0	49.7	8,300	140.0	53.3	8,700	145.0	50.7	7,900	145.0	54.9	7,500
140.0	42.7	7,900				140.0	46.4	8,100				145.0	47.7	7,800				150.0	48.8	7,400	150.0	52.9	7,400
145.0	40.2	7,400				145.0	44.2	7,600				150.0	45.6	7,300				155.0	46.9	6,900			
150.0	37.6	6,900				150.0	42.0	7,100				155.0	43.5	6,800				160.0	44.9	6,500			
155.0	34.8	6,500				155.0	39.5	6,700				160.0	41.3	6,400				165.0	42.8	6,100			
160.0	31.8	6,000				160.0	37.0	6,200				165.0	38.9	6,000				170.0	40.6	5,700			
						165.0	34.3	5,800				170.0	36.4	5,500				175.0	38.3	5,300			
												175.0	33.8	5,100				180.0	35.9	4,900			
																		185.0	33.3	4,500			
Reeves	1		Reeves	1		Reeves	1		Reeves	1		Reeves	1		Reeves	1		Reeves	1		Reeves	1	

150' Boom																	
70 ft Jib																	
Offset Angle (deg.)																	
10						30											
Load Radius (ft)	Boom Angle (deg.)	Rated Load (lbs)	Load Radius (ft)	Boom Angle (deg.)	Rated Load (lbs)												
55.0	79.7	15,600*															
60.0	78.3	15,400*															
65.0	77.0	15,200*															
70.0	75.6	14,900*															
75.0	74.3	14,700	75.0	80.0	8,100*												
80.0	72.9	14,500	80.0	78.5	8,100*												
85.0	71.5	14,300	85.0	77.1	8,100*												
90.0	70.1	14,200	90.0	75.7	8,100*												
95.0	68.7	14,000	95.0	74.2	8,100*												
100.0	67.2	13,400	100.0	72.7	7,900*												
105.0	65.8	12,800	105.0	71.2	7,700*												
110.0	64.3	12,300	110.0	69.7	7,500*												
115.0	62.8	11,700	115.0	68.1	7,300*												
120.0	61.3	11,200	120.0	66.6	7,100*												
125.0	59.8	10,500	125.0	65.0	6,900*												
130.0	58.2	9,800	130.0	63.3	6,700*												
135.0	56.6	9,200	135.0	61.6	6,600*												
140.0	54.9	8,500	140.0	59.9	6,400												
145.0	53.3	8,000	145.0	58.2	6,300												
150.0	51.6	7,500	150.0	56.4	6,200												
155.0	49.8	7,000	155.0	54.5	6,100												
160.0	48.0	6,600	160.0	52.6	5,900												
165.0	46.1	6,200	165.0	50.6	5,800												
170.0	44.2	5,800															
175.0	42.1	5,400															
180.0	40.0	5,000															
185.0	37.8	4,600															
190.0	35.4	4,200															
195.0	32.9	3,900															
Reeves	1		Reeves	1													

*Note: Designed and rated to comply with ANSI Code B30.5
Capacities based on factors other than machine stability such as structural competence are shown by asterisk * in the charts.
Refer to notes on page 24.*

CK1200G-3 HDO LIFTING CHART

Fixed Jib Lift Capacity (without main hook)

Counterweights : 76,320 lbs Carbody weights : 44,100 lbs

160' Boom																							
30 ft Jib						40 ft Jib						50 ft Jib						60 ft Jib					
Offset Angle (deg.)						Offset Angle (deg.)						Offset Angle (deg.)						Offset Angle (deg.)					
10			30			10			30			10			30			10			30		
Load Radius (ft)	Boom Angle (deg.)	Rated Load (lbs)	Load Radius (ft)	Boom Angle (deg.)	Rated Load (lbs)	Load Radius (ft)	Boom Angle (deg.)	Rated Load (lbs)	Load Radius (ft)	Boom Angle (deg.)	Rated Load (lbs)	Load Radius (ft)	Boom Angle (deg.)	Rated Load (lbs)	Load Radius (ft)	Boom Angle (deg.)	Rated Load (lbs)	Load Radius (ft)	Boom Angle (deg.)	Rated Load (lbs)	Load Radius (ft)	Boom Angle (deg.)	Rated Load (lbs)
45.0	79.0	24,000*				50.0	78.6	24,000*				50.0	79.6	20,000*				55.0	79.2	18,000*			
50.0	77.5	24,000*				55.0	77.1	24,000*				55.0	78.2	20,000*				60.0	77.9	18,000*			
55.0	75.9	24,000*				60.0	75.7	24,000*	60.0	79.2	15,400*	60.0	76.8	20,000*				65.0	76.5	18,000*			
60.0	74.4	24,000*	55.0	78.7	21,000*	65.0	74.2	24,000*	65.0	77.7	15,400*	65.0	75.4	20,000*	65.0	79.6	11,400*	70.0	75.2	18,000*			
65.0	72.8	24,000*	60.0	77.1	21,000*	70.0	72.7	24,000*	70.0	76.1	15,400*	70.0	74.0	20,000*	70.0	78.2	11,400*	75.0	73.8	18,000*	75.0	78.6	9,200*
70.0	71.2	24,000*	65.0	75.5	21,000*	75.0	71.1	22,400	75.0	74.6	15,400*	75.0	72.5	20,000*	75.0	76.7	11,400*	80.0	72.4	18,000*	80.0	77.2	9,200*
75.0	69.6	22,100	70.0	73.9	21,000*	80.0	69.6	20,400	80.0	73.0	15,400*	80.0	71.1	20,000*	80.0	75.2	11,400*	85.0	71.1	18,000*	85.0	75.8	9,200*
80.0	68.0	20,100	75.0	72.2	21,000*	85.0	68.1	18,700	85.0	71.4	15,400*	85.0	69.6	18,900	85.0	73.7	11,400*	90.0	69.6	17,500	90.0	74.3	9,200*
85.0	66.3	18,300	80.0	70.6	20,800	90.0	66.5	17,100	90.0	69.8	15,400*	90.0	68.1	17,400	90.0	72.2	11,400*	95.0	68.2	16,100	95.0	72.9	9,200*
90.0	64.6	16,800	85.0	68.9	19,000	95.0	64.9	15,700	95.0	68.2	15,000*	95.0	66.6	15,900	95.0	70.6	11,400*	100.0	66.8	14,900	100.0	71.4	9,200*
95.0	62.9	15,400	90.0	67.2	17,400	100.0	63.3	14,500	100.0	66.5	14,600	100.0	65.1	14,700	100.0	69.1	11,400*	105.0	65.3	13,800	105.0	69.9	9,200*
100.0	61.2	14,200	95.0	65.5	15,900	105.0	61.6	13,400	105.0	64.8	14,000	105.0	63.6	13,600	105.0	67.5	11,200*	110.0	63.9	12,800	110.0	68.4	9,000*
105.0	59.5	13,100	100.0	63.7	14,700	110.0	60.0	12,400	110.0	63.1	12,900	110.0	62.0	12,600	110.0	65.9	10,900*	115.0	62.4	11,800	115.0	66.8	8,700*
110.0	57.7	12,100	105.0	61.9	13,600	115.0	58.3	11,500	115.0	61.4	11,900	115.0	60.4	11,700	115.0	64.2	10,600*	120.0	60.9	11,000	120.0	65.3	8,500*
115.0	55.8	11,200	110.0	60.1	12,500	120.0	56.5	10,600	120.0	59.6	11,100	120.0	58.8	10,800	120.0	62.6	10,400*	125.0	59.3	10,200	125.0	63.7	8,300*
120.0	54.0	10,400	115.0	58.2	11,600	125.0	54.8	9,900	125.0	57.8	10,300	125.0	57.2	10,100	125.0	60.9	9,600	130.0	57.7	9,600	130.0	62.1	8,000*
125.0	52.1	9,700	120.0	56.3	10,700	130.0	53.0	9,200	130.0	55.9	9,600	130.0	55.5	9,400	130.0	59.1	9,900	135.0	56.1	8,900	135.0	60.4	7,800*
130.0	50.1	9,000	125.0	54.3	10,000	135.0	51.1	8,600	135.0	54.0	9,000	135.0	53.8	8,800	135.0	57.3	9,300	140.0	54.5	8,300	140.0	58.7	7,800
135.0	48.0	8,400	130.0	52.3	9,300	140.0	49.2	8,000	140.0	52.0	8,300	140.0	52.0	8,200	140.0	55.5	8,600	145.0	52.8	7,800	145.0	57.0	7,700
140.0	45.9	7,800				145.0	47.2	7,500				145.0	50.2	7,600	145.0	53.6	8,000	150.0	51.1	7,300	150.0	55.2	7,500
145.0	43.7	7,300				150.0	45.2	7,000				150.0	48.3	7,100	150.0	51.7	7,500	155.0	49.4	6,800	155.0	53.3	7,200
150.0	41.5	6,800				155.0	43.0	6,500				155.0	46.4	6,700				160.0	47.5	6,300	160.0	51.4	6,700
155.0	39.1	6,300				160.0	40.8	6,100				160.0	44.4	6,200				165.0	45.7	5,900			
160.0	36.5	5,800				165.0	38.5	5,600				165.0	42.3	5,800				170.0	43.7	5,500			
165.0	33.8	5,400				170.0	36.0	5,100				170.0	40.2	5,300				175.0	41.7	5,100			
170.0	30.9	4,900				175.0	33.3	4,700				175.0	37.9	4,900				180.0	39.6	4,600			
												180.0	35.5	4,500				185.0	37.4	4,300			
												185.0	32.9	4,100				190.0	35.0	3,900			
																		195.0	32.5	3,600			
Reeves	1		Reeves	1		Reeves	1		Reeves	1		Reeves	1		Reeves	1		Reeves	1		Reeves	1	

160' Boom																	
70 ft Jib																	
Offset Angle (deg.)																	
10			30														
Load Radius (ft)	Boom Angle (deg.)	Rated Load (lbs)	Load Radius (ft)	Boom Angle (deg.)	Rated Load (lbs)												
60.0	78.9	15,400*															
65.0	77.6	15,200*															
70.0	76.3	15,000*															
75.0	75.0	14,800															
80.0	73.7	14,600	80.0	79.1	8,100*												
85.0	72.3	14,400	85.0	77.7	8,100*												
90.0	71.0	14,300	90.0	76.3	8,100*												
95.0	69.7	14,100	95.0	75.0	8,100*												
100.0	68.3	13,900	100.0	73.5	8,000*												
105.0	66.9	13,300	105.0	72.1	7,800*												
110.0	65.5	12,700	110.0	70.7	7,600*												
115.0	64.1	11,900	115.0	69.2	7,400*												
120.0	62.7	11,100	120.0	67.7	7,200*												
125.0	61.2	10,400	125.0	66.2	7,000*												
130.0	59.8	9,700	130.0	64.7	6,900*												
135.0	58.3	9,000	135.0	63.2	6,700*												
140.0	56.7	8,400	140.0	61.6	6,500												
145.0	55.2	7,900	145.0	59.9	6,400												
150.0	53.6	7,400	150.0	58.3	6,300												
155.0	52.0	6,900	155.0	56.6	6,200												
160.0	50.3	6,400	160.0	54.8	6,100												
165.0	48.6	6,000	165.0	53.0	5,900												
170.0	46.8	5,600	170.0	51.2	5,900												
175.0	45.0	5,200															
180.0	43.1	4,800															
185.0	41.1	4,400															
190.0	39.0	4,000															
195.0	36.9	3,700															
200.0	34.6	3,300															
Reeves	1		Reeves	1													

Note: Designed and rated to comply with ANSI Code B30.5
Capacities based on factors other than machine stability such as structural competence are shown by asterisk * in the charts.
Refer to notes on page 24.

Fixed Jib Lift Capacity (without main hook)

Counterweights : 76,320 lbs Carbody weights : 44,100 lbs

170' Boom																							
30 ft Jib						40 ft Jib						50 ft Jib						60 ft Jib					
Offset Angle (deg.)						Offset Angle (deg.)						Offset Angle (deg.)						Offset Angle (deg.)					
10			30			10			30			10			30			10			30		
Load Radius (ft)	Boom Angle (deg.)	Rated Load (lbs)	Load Radius (ft)	Boom Angle (deg.)	Rated Load (lbs)	Load Radius (ft)	Boom Angle (deg.)	Rated Load (lbs)	Load Radius (ft)	Boom Angle (deg.)	Rated Load (lbs)	Load Radius (ft)	Boom Angle (deg.)	Rated Load (lbs)	Load Radius (ft)	Boom Angle (deg.)	Rated Load (lbs)						
45.0	79.6	24,000*				50.0	79.2	24,000*				55.0	78.8	20,000*				55.0	79.7	18,000*			
50.0	78.1	24,000*				55.0	77.8	24,000*				60.0	77.4	20,000*				60.0	78.4	18,000*			
55.0	76.7	24,000*				60.0	76.4	24,000*				65.0	76.1	20,000*				65.0	77.1	18,000*			
60.0	75.2	24,000*	55.0	79.3	21,000*	65.0	74.9	24,000*	60.0	79.7	15,400*	70.0	74.7	20,000*	70.0	78.7	11,400*	70.0	75.9	18,000*			
65.0	73.7	24,000*	60.0	77.8	21,000*	70.0	73.5	24,000*	70.0	76.8	15,400*	75.0	73.4	20,000*	75.0	77.3	11,400*	75.0	74.5	18,000*	75.0	79.2	9,200*
70.0	72.2	24,000*	70.0	74.7	21,000*	75.0	72.1	22,100	75.0	75.4	15,400*	80.0	72.0	20,000*	80.0	75.9	11,400*	80.0	73.2	18,000*	80.0	77.8	9,200*
75.0	70.7	21,700	75.0	73.2	21,000*	80.0	70.6	20,100	80.0	73.9	15,400*	85.0	70.6	18,600	85.0	74.5	11,400*	85.0	71.9	18,000*	85.0	76.5	9,200*
80.0	69.1	19,700	80.0	71.6	20,500	85.0	69.2	18,300	85.0	72.4	15,400*	90.0	69.2	17,000	90.0	73.1	11,400*	90.0	70.6	17,200	90.0	75.1	9,200*
85.0	67.6	18,000	85.0	70.0	18,700	90.0	67.7	16,800	90.0	70.9	15,400*	95.0	67.8	15,600	95.0	71.6	11,400*	95.0	69.2	15,800	95.0	73.7	9,200*
90.0	66.0	16,500	90.0	68.4	17,100	95.0	66.2	15,300	95.0	69.3	15,200*	100.0	66.3	14,400	100.0	70.1	11,400*	100.0	67.9	14,500	100.0	72.3	9,200*
95.0	64.4	15,000	95.0	66.8	15,600	100.0	64.7	14,100	100.0	67.8	14,800	105.0	64.9	13,300	105.0	68.6	11,300*	105.0	66.5	13,400	105.0	70.9	9,200*
100.0	62.8	13,800	100.0	65.2	14,300	105.0	63.1	13,000	105.0	66.2	13,700	110.0	63.4	12,300	110.0	67.1	11,100*	110.0	65.1	12,500	110.0	69.5	9,100*
105.0	61.2	12,800	105.0	63.5	13,200	110.0	61.6	12,100	110.0	64.6	12,600	115.0	61.9	11,300	115.0	65.6	10,800*	115.0	63.7	11,500	115.0	68.0	8,900*
110.0	59.5	11,800	110.0	61.8	12,200	115.0	60.0	11,100	115.0	63.0	11,700	120.0	60.4	10,500	120.0	64.0	10,600	120.0	62.3	10,700	120.0	66.5	8,700*
115.0	57.8	10,900	115.0	60.1	11,200	120.0	58.4	10,300	120.0	61.3	10,800	125.0	58.9	9,800	125.0	62.4	10,400	125.0	60.8	9,900	125.0	65.0	8,500*
120.0	56.1	10,000	120.0	58.3	10,400	125.0	56.7	9,600	125.0	59.6	10,000	130.0	57.3	9,100	130.0	60.8	9,600	130.0	59.3	9,200	130.0	63.5	8,100*
125.0	54.3	9,300	125.0	56.5	9,700	130.0	55.0	8,900	130.0	57.9	9,300	135.0	55.7	8,400	135.0	59.2	9,000	135.0	57.8	8,600	135.0	62.0	8,100*
130.0	52.5	8,700	130.0	54.6	8,900	135.0	53.3	8,300	135.0	56.1	8,700	140.0	54.1	7,800	140.0	57.5	8,300	140.0	56.3	8,000	140.0	60.4	8,000
135.0	50.6	8,000	135.0	52.7	8,300	140.0	51.6	7,600	140.0	54.3	8,000	145.0	52.4	7,300	145.0	55.7	7,700	145.0	54.8	7,400	145.0	58.8	7,800
140.0	48.7	7,400				145.0	49.7	7,100	145.0	52.4	7,400	150.0	50.7	6,800	150.0	54.0	7,200	150.0	53.2	6,900	150.0	57.1	7,400
145.0	46.7	6,900				150.0	47.9	6,600				155.0	48.9	6,300	155.0	52.1	6,700	155.0	51.5	6,500	155.0	55.4	6,900
150.0	44.7	6,400				155.0	46.0	6,100				160.0	47.1	5,800				160.0	49.9	5,900	160.0	53.7	6,400
155.0	42.6	5,800				160.0	44.0	5,500				165.0	45.2	5,300				165.0	48.2	5,500	165.0	51.9	6,000
160.0	40.3	5,300				165.0	41.9	5,100				170.0	43.3	4,800				170.0	46.4	5,000			
165.0	38.0	4,800				170.0	39.7	4,600				175.0	41.3	4,400				175.0	44.6	4,600			
170.0	35.5	4,400				175.0	37.5	4,200				180.0	39.2	4,000				180.0	42.7	4,200			
175.0	32.9	4,000				180.0	35.1	3,800				185.0	36.9	3,600				185.0	40.7	3,800			
						185.0	32.5	3,400				190.0	34.6	3,300				190.0	38.6	3,400			
Reeves	1		Reeves	1		Reeves	1		Reeves	1		Reeves	1		Reeves	1		Reeves	1		Reeves	1	

170' Boom																	
70 ft Jib																	
Offset Angle (deg.)																	
10						30											
Load Radius (ft)	Boom Angle (deg.)	Rated Load (lbs)	Load Radius (ft)	Boom Angle (deg.)	Rated Load (lbs)												
60.0	79.3	15,500*															
65.0	78.1	15,300*															
70.0	76.9	15,100*															
75.0	75.6	14,900	75.0	80.9	8,100*												
80.0	74.4	14,700	80.0	79.6	8,100*												
85.0	73.1	14,500	85.0	78.3	8,100*												
90.0	71.8	14,300	90.0	77.0	8,100*												
95.0	70.6	14,200	95.0	75.6	8,100*												
100.0	69.3	14,000	100.0	74.3	8,100*												
105.0	68.0	13,600	105.0	73.0	7,900*												
110.0	66.6	12,600	110.0	71.6	7,700*												
115.0	65.3	11,600	115.0	70.2	7,500*												
120.0	63.9	10,800	120.0	68.8	7,300*												
125.0	62.6	10,000	125.0	67.4	7,100*												
130.0	61.2	9,300	130.0	66.0	7,000*												
135.0	59.8	8,700	135.0	64.5	6,800*												
140.0	58.3	8,100	140.0	63.0	6,700												
145.0	56.9	7,500	145.0	61.5	6,500												
150.0	55.4	7,000	150.0	59.9	6,400												
155.0	53.9	6,600	155.0	58.4	6,300												
160.0	52.3	6,100	160.0	56.7	6,100												
165.0	50.7	5,600	165.0	55.1	6,100												
170.0	49.1	5,100	170.0	53.4	5,800												
175.0	47.4	4,700	175.0	51.6	5,300												
180.0	45.7	4,300															
185.0	43.9	3,900															
190.0	42.1	3,500															
Reeves	1		Reeves	1													

*Note: Designed and rated to comply with ANSI Code B30.5
Capacities based on factors other than machine stability such as structural competence are shown by asterisk * in the charts.
Refer to notes on page 24.*

CK1200G-3 HDO LIFTING CHART

Fixed Jib Lift Capacity (without main hook)

Counterweights : 76,320 lbs Carbody weights : 44,100 lbs

180' Boom																									
30 ft Jib						40 ft Jib						50 ft Jib						60 ft Jib							
Offset Angle (deg.)						Offset Angle (deg.)						Offset Angle (deg.)						Offset Angle (deg.)							
10			30			10			30			10			30			10			30				
Load Radius (ft)	Boom Angle (deg.)	Rated Load (lbs)	Load Radius (ft)	Boom Angle (deg.)	Rated Load (lbs)	Load Radius (ft)	Boom Angle (deg.)	Rated Load (lbs)	Load Radius (ft)	Boom Angle (deg.)	Rated Load (lbs)	Load Radius (ft)	Boom Angle (deg.)	Rated Load (lbs)	Load Radius (ft)	Boom Angle (deg.)	Rated Load (lbs)	Load Radius (ft)	Boom Angle (deg.)	Rated Load (lbs)	Load Radius (ft)	Boom Angle (deg.)	Rated Load (lbs)		
50.0	78.7	24,000*				50.0	79.7	24,000*							55.0	79.3	20,000*				60.0	78.9	18,000*		
55.0	77.3	24,000*	55.0	79.8	21,000*	55.0	78.3	24,000*				60.0	78.0	20,000*	65.0	77.7	18,000*				65.0	77.7	18,000*		
60.0	75.9	24,000*	60.0	78.4	21,000*	60.0	77.0	24,000*				65.0	76.7	20,000*	70.0	76.5	18,000*				70.0	76.5	18,000*		
65.0	74.5	23,900	65.0	77.0	21,000*	65.0	75.7	24,000*	65.0	78.8	15,400*	70.0	75.4	20,000*	75.0	75.2	18,000*	75.0	79.7		75.0	75.2	18,000*		
70.0	73.1	21,400	70.0	75.5	21,000*	70.0	74.3	24,000*	70.0	77.5	15,400*	75.0	74.1	20,000*	75.0	77.9	11,400*	80.0	74.0		80.0	74.0	18,000*		
75.0	71.6	19,500	75.0	74.0	21,000*	75.0	72.9	21,800	75.0	76.1	15,400*	80.0	72.8	20,000*	80.0	76.6	11,400*	85.0	72.7		85.0	72.7	18,000*		
80.0	70.2	17,700	80.0	72.6	20,200	80.0	71.6	19,800	80.0	74.7	15,400*	85.0	71.5	18,300	85.0	75.2	11,400*	90.0	71.4		90.0	71.4	17,000*		
85.0	68.7	16,200	85.0	71.1	18,400	85.0	70.2	18,000	85.0	73.2	15,400*	90.0	70.2	16,800	90.0	73.9	11,400*	95.0	70.2		95.0	70.2	15,500		
90.0	67.2	14,700	90.0	69.6	16,800	90.0	68.8	16,500	90.0	71.8	15,400*	95.0	68.8	15,300	95.0	72.5	11,400*	100.0	68.9		100.0	68.9	14,300		
95.0	65.7	13,600	95.0	68.0	15,400	95.0	67.3	15,100	95.0	70.4	15,400*	100.0	67.4	14,100	100.0	71.1	11,400*	105.0	67.5		105.0	67.5	13,200		
100.0	64.2	12,500	100.0	66.5	14,100	100.0	65.9	13,800	100.0	68.9	14,600	105.0	66.1	13,000	105.0	69.7	11,400*	110.0	66.2		110.0	66.2	12,200		
105.0	62.7	11,500	105.0	64.9	13,000	105.0	64.5	12,800	105.0	67.4	13,400	110.0	64.7	12,000	110.0	68.3	11,300*	115.0	64.9		115.0	64.9	11,200		
110.0	61.1	10,600	110.0	63.3	12,000	110.0	63.0	11,800	110.0	65.9	12,400	115.0	63.3	11,000	115.0	66.8	11,000*	120.0	63.5		120.0	63.5	10,400		
115.0	59.5	9,800	115.0	61.7	11,000	115.0	61.5	10,800	115.0	64.4	11,400	120.0	61.8	10,200	120.0	65.3	10,800	125.0	62.2		125.0	62.2	9,600		
120.0	57.9	9,000	120.0	60.1	10,200	120.0	60.0	10,000	120.0	62.8	10,600	125.0	60.4	9,500	125.0	63.8	10,100	130.0	60.8		130.0	60.8	8,900		
125.0	56.3	8,300	125.0	58.4	9,400	125.0	58.4	9,300	125.0	61.2	9,800	130.0	58.9	8,800	130.0	62.3	9,400	135.0	59.4		135.0	59.4	8,300		
130.0	54.6	7,700	130.0	56.7	8,700	130.0	56.9	8,600	130.0	59.6	9,100	135.0	57.4	8,200	135.0	60.8	8,700	140.0	57.9		140.0	57.9	7,700		
135.0	52.9	7,100	135.0	54.9	8,000	135.0	55.3	8,000	135.0	58.0	8,400	140.0	55.9	7,500	140.0	59.2	8,100	145.0	56.5		145.0	56.5	7,100		
140.0	51.1	6,500	140.0	53.1	7,400	140.0	53.6	7,300	140.0	56.3	7,700	145.0	54.3	7,000	145.0	57.6	7,500	150.0	55.0		150.0	55.0	6,600		
145.0	49.3	5,900	145.0	51.2	6,900	145.0	52.0	6,800	145.0	54.6	7,200	150.0	52.8	6,500	150.0	56.0	6,900	155.0	53.5		155.0	53.5	6,100		
150.0	47.4	5,400				150.0	50.3	6,200	150.0	52.8	6,700	155.0	51.1	5,900	155.0	54.3	6,400	160.0	51.9		160.0	51.9	5,500		
155.0	45.5	4,900				155.0	48.5	5,700				160.0	49.5	5,400	160.0	52.5	5,900	165.0	50.3		165.0	50.3	5,100		
160.0	43.5	4,400				160.0	46.7	5,100				165.0	47.7	4,900				170.0	48.7		170.0	48.7	4,600		
165.0	41.5	4,000				165.0	44.8	4,700				170.0	46.0	4,400				175.0	47.0		175.0	47.0	4,200		
170.0	39.3	3,600				170.0	42.9	4,200				175.0	44.2	4,000				180.0	45.3		180.0	45.3	3,700		
175.0	37.0					175.0	40.9	3,800				180.0	42.3	3,600				185.0	43.5		185.0	43.5	3,400		
180.0						180.0	38.7	3,400																	
Reeves	1		Reeves	1		Reeves	1		Reeves	1		Reeves	1		Reeves	1		Reeves	1		Reeves	1		Reeves	1

180' Boom																		
70 ft Jib																		
Offset Angle (deg.)																		
10						30												
Load Radius (ft)	Boom Angle (deg.)	Rated Load (lbs)	Load Radius (ft)	Boom Angle (deg.)	Rated Load (lbs)													
60.0	79.8	15,600*																
65.0	78.6	15,400*																
70.0	77.4	15,200*																
75.0	76.2	15,000																
80.0	75.0	14,800	80.0	80.0	8,100*													
85.0	73.8	14,600	85.0	78.8	8,100*													
90.0	72.6	14,400	90.0	77.5	8,100*													
95.0	71.4	14,300	95.0	76.3	8,100*													
100.0	70.1	14,100	100.0	75.0	8,100*													
105.0	68.9	13,300	105.0	73.7	8,000*													
110.0	67.6	12,300	110.0	72.4	7,800*													
115.0	66.4	11,300	115.0	71.1	7,600*													
120.0	65.1	10,500	120.0	69.8	7,400*													
125.0	63.8	9,700	125.0	68.4	7,200*													
130.0	62.5	9,100	130.0	67.1	7,100*													
135.0	61.1	8,400	135.0	65.7	6,900*													
140.0	59.8	7,800	140.0	64.3	6,800													
145.0	58.4	7,200	145.0	62.9	6,600													
150.0	57.0	6,700	150.0	61.4	6,500													
155.0	55.6	6,300	155.0	59.9	6,400													
160.0	54.1	5,700	160.0	58.4	6,300													
165.0	52.7	5,200	165.0	56.9	6,000													
170.0	51.1	4,700	170.0	55.3	5,500													
175.0	49.6	4,300	175.0	53.7	5,000													
180.0	48.0	3,900	180.0	52.0	4,500													
185.0	46.4	3,500																
Reeves	1		Reeves	1														

Note: Designed and rated to comply with ANSI Code B30.5
Capacities based on factors other than machine stability such as structural competence are shown by asterisk * in the charts.
Refer to notes on page 24.

Fixed Jib Lift Capacity (without main hook)

Counterweights : 76,320 lbs Carbody weights : 44,100 lbs

190' Boom																							
30 ft Jib						40 ft Jib						50 ft Jib						60 ft Jib					
Offset Angle (deg.)						Offset Angle (deg.)						Offset Angle (deg.)						Offset Angle (deg.)					
10			30			10			30			10			30			10			30		
Load Radius (ft)	Boom Angle (deg.)	Rated Load (lbs)	Load Radius (ft)	Boom Angle (deg.)	Rated Load (lbs)	Load Radius (ft)	Boom Angle (deg.)	Rated Load (lbs)	Load Radius (ft)	Boom Angle (deg.)	Rated Load (lbs)	Load Radius (ft)	Boom Angle (deg.)	Rated Load (lbs)	Load Radius (ft)	Boom Angle (deg.)	Rated Load (lbs)						
50.0	79.2	24,000*				55.0	78.9	24,000*				55.0	79.7	20,000*				60.0	79.4	18,000*			
55.0	77.9	24,000*				60.0	77.6	24,000*				60.0	78.5	20,000*				65.0	78.2	18,000*			
60.0	76.6	24,000*	60.0	78.9	21,000*	65.0	76.3	24,000*	65.0	79.4	15,400*	65.0	77.3	20,000*				70.0	77.0	18,000*			
65.0	75.2	24,000*	65.0	77.6	21,000*	70.0	75.0	24,000*	70.0	78.0	15,400*	70.0	76.0	20,000*	70.0	79.7	11,400*	75.0	75.8	18,000*			
70.0	73.9	23,600	70.0	76.2	21,000*	75.0	73.7	21,500	75.0	76.7	15,400*	75.0	74.8	20,000*	75.0	78.5	11,400*	80.0	74.6	18,000*	80.0	78.9	9,200*
75.0	72.5	21,100	75.0	74.8	21,000*	80.0	72.4	19,500	80.0	75.4	15,400*	80.0	73.6	19,800	80.0	77.2	11,400*	85.0	73.4	18,000*	85.0	77.6	9,200*
80.0	71.1	19,100	80.0	73.4	19,900	85.0	71.1	17,700	85.0	74.0	15,400*	85.0	72.3	18,000	85.0	75.9	11,400*	90.0	72.2	16,700	90.0	76.4	9,200*
85.0	69.7	17,400	85.0	72.0	18,100	90.0	69.7	16,200	90.0	72.7	15,400*	90.0	71.0	16,400	90.0	74.6	11,400*	95.0	71.0	15,200	95.0	75.1	9,200*
90.0	68.3	15,800	90.0	70.6	16,600	95.0	68.4	14,700	95.0	71.3	15,400*	95.0	69.7	15,000	95.0	73.3	11,400*	100.0	69.8	13,900	100.0	73.9	9,200*
95.0	66.9	14,400	95.0	69.1	15,100	100.0	67.0	13,500	100.0	69.9	14,300	100.0	68.5	13,800	100.0	72.0	11,400*	105.0	68.5	12,800	105.0	72.6	9,200*
100.0	65.5	13,200	100.0	67.7	13,800	105.0	65.7	12,400	105.0	68.5	13,200	105.0	67.1	12,600	105.0	70.6	11,400*	110.0	67.3	11,800	110.0	71.3	9,200*
105.0	64.0	12,100	105.0	66.2	12,700	110.0	64.3	11,400	110.0	67.1	12,100	110.0	65.8	11,700	110.0	69.3	11,300*	115.0	66.0	10,900	115.0	70.0	9,100*
110.0	62.5	11,100	110.0	64.7	11,600	115.0	62.9	10,500	115.0	65.6	11,100	115.0	64.5	10,700	115.0	67.9	11,200*	120.0	64.7	10,000	120.0	68.7	8,900*
115.0	61.1	10,200	115.0	63.2	10,700	120.0	61.4	9,700	120.0	64.2	10,200	120.0	63.1	9,900	120.0	66.5	10,600	125.0	63.4	9,300	125.0	67.3	8,700*
120.0	59.5	9,400	120.0	61.6	9,800	125.0	60.0	8,900	125.0	62.7	9,500	125.0	61.8	9,100	125.0	65.1	9,800	130.0	62.1	8,600	130.0	66.0	8,500*
125.0	58.0	8,700	125.0	60.1	9,100	130.0	58.5	8,200	130.0	61.2	8,700	130.0	60.4	8,400	130.0	63.7	9,100	135.0	60.7	8,000	135.0	64.6	8,400
130.0	56.4	8,000	130.0	58.5	8,300	135.0	57.0	7,600	135.0	59.6	8,100	135.0	59.0	7,800	135.0	62.2	8,400	140.0	59.4	7,300	140.0	63.2	8,000
135.0	54.8	7,400	135.0	56.8	7,700	140.0	55.5	7,000	140.0	58.1	7,400	140.0	57.5	7,200	140.0	60.8	7,800	145.0	58.0	6,800	145.0	61.8	7,500
140.0	53.2	6,700	140.0	55.2	7,000	145.0	53.9	6,300	145.0	56.5	6,900	145.0	56.1	6,600	145.0	59.2	7,200	150.0	56.6	6,200	150.0	60.3	6,900
145.0	51.5	6,000	145.0	53.4	6,400	150.0	52.3	5,700	150.0	54.8	6,200	150.0	54.6	6,000	150.0	57.7	6,600	155.0	55.2	5,600	155.0	58.9	6,400
150.0	49.8	5,400	150.0	51.7	5,800	155.0	50.7	5,200	155.0	53.2	5,600	155.0	53.1	5,400	155.0	56.1	6,100	160.0	53.8	5,100	160.0	57.4	5,800
155.0	48.1	4,900				160.0	49.0	4,600				160.0	51.5	4,900	160.0	54.5	5,400	165.0	52.3	4,600	165.0	55.8	5,300
160.0	46.3	4,400				165.0	47.3	4,200				165.0	49.9	4,400	165.0	52.9	4,900	170.0	50.8	4,100	170.0	54.3	4,800
165.0	44.4	3,900				170.0	45.6	3,700				170.0	48.3	3,900				175.0	49.2	3,700	175.0	52.6	4,300
170.0	42.5	3,400				175.0	43.7	3,300				175.0	46.6	3,500				180.0	47.6	3,300			
Reeves	1	Reeves	1	Reeves	1	Reeves	1	Reeves	1	Reeves	1	Reeves	1	Reeves	1	Reeves	1	Reeves	1	Reeves	1	Reeves	1

190' Boom																	
70 ft Jib																	
Offset Angle (deg.)																	
10						30											
Load Radius (ft)	Boom Angle (deg.)	Rated Load (lbs)	Load Radius (ft)	Boom Angle (deg.)	Rated Load (lbs)												
65.0	79.0	15,400*															
70.0	77.9	15,200*															
75.0	76.8	15,000															
80.0	75.6	14,900															
85.0	74.5	14,700	80.0	80.4	8,100*												
90.0	73.3	14,500	85.0	79.2	8,100*												
95.0	72.1	14,300	90.0	78.0	8,100*												
100.0	71.0	14,100	95.0	76.8	8,100*												
105.0	69.8	13,000	100.0	75.6	8,100*												
110.0	68.6	12,000	105.0	74.4	8,000*												
115.0	67.4	11,000	110.0	73.2	7,900*												
120.0	66.1	10,200	115.0	71.9	7,700*												
125.0	64.9	9,400	120.0	70.7	7,500*												
130.0	63.6	8,700	125.0	69.4	7,400*												
135.0	62.4	8,100	130.0	68.1	7,200*												
140.0	61.1	7,400	135.0	66.8	7,000												
145.0	59.8	6,900	140.0	65.5	6,900												
150.0	58.5	6,300	145.0	64.1	6,700												
155.0	57.1	5,800	150.0	62.8	6,600												
160.0	55.8	5,200	155.0	61.4	6,500												
165.0	54.4	4,700	160.0	60.0	6,100												
170.0	53.0	4,200	165.0	58.5	5,600												
175.0	51.5	3,800	170.0	57.0	5,100												
180.0	50.0	3,400	175.0	55.5	4,600												
			180.0	54.0	4,100												
			185.0	52.4	3,700												
			190.0	50.8	3,300												
Reeves	1	Reeves	1														

*Note: Designed and rated to comply with ANSI Code B30.5
Capacities based on factors other than machine stability such as structural competence are shown by asterisk * in the charts.
Refer to notes on page 24.*

CK1200G-3 HDO LIFTING CHART

Fixed Jib Lift Capacity (without main hook)

Counterweights : 76,320 lbs Carbody weights : 44,100 lbs

200' Boom																							
30 ft Jib						40 ft Jib						50 ft Jib						60 ft Jib					
Offset Angle (deg.)						Offset Angle (deg.)						Offset Angle (deg.)						Offset Angle (deg.)					
10			30			10			30			10			30			10			30		
Load Radius (ft)	Boom Angle (deg.)	Rated Load (lbs)	Load Radius (ft)	Boom Angle (deg.)	Rated Load (lbs)	Load Radius (ft)	Boom Angle (deg.)	Rated Load (lbs)	Load Radius (ft)	Boom Angle (deg.)	Rated Load (lbs)	Load Radius (ft)	Boom Angle (deg.)	Rated Load (lbs)	Load Radius (ft)	Boom Angle (deg.)	Rated Load (lbs)	Load Radius (ft)	Boom Angle (deg.)	Rated Load (lbs)			
50.0	79.7	24,000 *				55.0	79.3	24,000 *				60.0	79.0	20,000 *				60.0	79.8	18,000 *			
55.0	78.4	24,000 *				60.0	78.1	24,000 *				65.0	77.8	20,000 *				65.0	78.7	18,000 *			
60.0	77.2	24,000 *				65.0	76.9	24,000 *				70.0	76.6	20,000 *				70.0	77.5	18,000 *			
65.0	75.9	24,000 *	60.0	79.4	21,000 *	70.0	75.6	23,900 *	65.0	79.8	15,400 *	75.0	75.4	20,000 *	75.0	79.0	11,400 *	75.0	76.4	18,000 *			
70.0	74.6	23,500 *	70.0	76.8	21,000 *	75.0	74.4	21,400 *	75.0	77.3	15,400 *	80.0	74.2	19,700 *	80.0	77.7	11,400 *	80.0	75.2	18,000 *	80.0	79.3	9,200 *
75.0	73.3	21,000 *	75.0	75.5	21,000 *	80.0	73.1	19,400 *	80.0	76.0	15,400 *	85.0	73.0	17,900 *	85.0	76.5	11,400 *	85.0	74.1	18,000 *	85.0	78.1	9,200 *
80.0	72.0	19,000 *	80.0	74.2	19,900 *	85.0	71.9	17,600 *	85.0	74.7	15,400 *	90.0	71.8	16,400 *	90.0	75.3	11,400 *	90.0	72.9	16,600 *	90.0	76.9	9,200 *
85.0	70.6	17,300 *	85.0	72.8	18,100 *	90.0	70.6	16,100 *	90.0	73.4	15,400 *	95.0	70.6	14,900 *	95.0	74.0	11,400 *	95.0	71.8	15,100 *	95.0	75.8	9,200 *
90.0	69.3	15,800 *	90.0	71.5	16,500 *	95.0	69.3	14,600 *	95.0	72.1	15,400 *	100.0	69.4	13,600 *	100.0	72.7	11,400 *	100.0	70.6	13,800 *	100.0	74.5	9,200 *
95.0	68.0	14,300 *	95.0	70.1	15,000 *	100.0	68.0	13,400 *	100.0	70.8	14,200 *	105.0	68.1	12,500 *	105.0	71.5	11,400 *	105.0	69.4	12,700 *	105.0	73.3	9,200 *
100.0	66.6	13,100 *	100.0	68.7	13,700 *	105.0	66.7	12,300 *	105.0	69.5	13,100 *	110.0	66.9	11,500 *	110.0	70.2	11,400 *	110.0	68.2	11,700 *	110.0	72.1	9,200 *
105.0	65.2	12,000 *	105.0	67.3	12,600 *	110.0	65.4	11,300 *	110.0	68.1	12,000 *	115.0	65.6	10,600 *	115.0	68.9	11,300 *	115.0	67.0	10,800 *	115.0	70.8	9,200 *
110.0	63.8	11,000 *	110.0	65.9	11,600 *	115.0	64.1	10,400 *	115.0	66.8	11,000 *	120.0	64.3	9,800 *	120.0	67.6	10,600 *	120.0	65.8	9,900 *	120.0	69.6	9,100 *
115.0	62.4	10,100 *	115.0	64.5	10,600 *	120.0	62.7	9,600 *	120.0	65.4	10,200 *	125.0	63.0	9,000 *	125.0	66.2	9,800 *	125.0	64.5	9,200 *	125.0	68.3	8,900 *
120.0	61.0	9,300 *	120.0	63.0	9,700 *	125.0	61.4	8,800 *	125.0	64.0	9,400 *	130.0	61.7	8,300 *	130.0	64.9	9,000 *	130.0	63.3	8,500 *	130.0	67.0	8,700 *
125.0	59.6	8,500 *	125.0	61.6	9,000 *	130.0	60.0	8,100 *	130.0	62.6	8,700 *	135.0	60.4	7,700 *	135.0	63.5	8,300 *	135.0	62.0	7,800 *	135.0	65.7	8,500 *
130.0	58.1	7,900 *	130.0	60.1	8,300 *	135.0	58.6	7,500 *	135.0	61.1	8,000 *	140.0	59.0	7,100 *	140.0	62.1	7,700 *	140.0	60.7	7,200 *	140.0	64.4	8,000 *
135.0	56.6	7,200 *	135.0	58.5	7,600 *	140.0	57.1	6,800 *	140.0	59.7	7,300 *	145.0	57.6	6,400 *	145.0	60.7	7,100 *	145.0	59.4	6,600 *	145.0	63.1	7,400 *
140.0	55.1	6,500 *	140.0	57.0	7,000 *	145.0	55.7	6,200 *	145.0	58.2	6,800 *	150.0	56.2	5,800 *	150.0	59.3	6,500 *	150.0	58.1	6,000 *	150.0	61.7	6,800 *
145.0	53.5	5,900 *	145.0	55.4	6,300 *	150.0	54.2	5,600 *	150.0	56.6	6,100 *	155.0	54.8	5,300 *	155.0	57.8	5,900 *	155.0	56.8	5,500 *	155.0	60.3	6,300 *
150.0	51.9	5,300 *	150.0	53.8	5,700 *	155.0	52.7	5,000 *	155.0	55.1	5,500 *	160.0	53.4	4,700 *	160.0	56.3	5,300 *	160.0	55.4	4,900 *	160.0	58.9	5,700 *
155.0	50.3	4,700 *	155.0	52.1	5,100 *	160.0	51.1	4,500 *	160.0	53.5	4,900 *	165.0	51.9	4,200 *	165.0	54.8	4,800 *	165.0	54.0	4,400 *	165.0	57.5	5,100 *
160.0	48.6	4,200 *				165.0	49.5	4,000 *	165.0	51.9	4,400 *	170.0	50.4	3,800 *	170.0	53.2	4,300 *	170.0	52.6	3,900 *	170.0	56.0	4,600 *
165.0	46.9	3,700 *				170.0	47.9	3,500 *				175.0	48.8	3,300 *	175.0	51.6	3,800 *	175.0	51.1	3,500 *	175.0	54.5	4,100 *
170.0	45.2	3,300 *																			180.0	53.0	3,700 *
Reeves	1		Reeves	1		Reeves	1		Reeves	1		Reeves	1		Reeves	1		Reeves	1		Reeves	1	

200' Boom																							
70 ft Jib																							
Offset Angle (deg.)																							
10			30																				
Load Radius (ft)	Boom Angle (deg.)	Rated Load (lbs)	Load Radius (ft)	Boom Angle (deg.)	Rated Load (lbs)																		
60.0	80.5	15,700 *																					
65.0	79.5	15,500 *																					
70.0	78.4	15,300 *																					
75.0	77.3	15,100 *																					
80.0	76.2	14,900 *																					
85.0	75.1	14,800 *	85.0	79.7	8,100 *																		
90.0	73.9	14,600 *	90.0	78.5	8,100 *																		
95.0	72.8	14,400 *	95.0	77.4	8,100 *																		
100.0	71.7	14,000 *	100.0	76.2	8,100 *																		
105.0	70.6	12,900 *	105.0	75.0	8,100 *																		
110.0	69.4	11,900 *	110.0	73.9	8,000 *																		
115.0	68.3	10,900 *	115.0	72.7	7,800 *																		
120.0	67.1	10,000 *	120.0	71.5	7,600 *																		
125.0	65.9	9,300 *	125.0	70.3	7,400 *																		
130.0	64.7	8,600 *	130.0	69.0	7,300 *																		
135.0	63.5	8,000 *	135.0	67.8	7,100 *																		
140.0	62.3	7,300 *	140.0	66.5	7,000 *																		
145.0	61.1	6,800 *	145.0	65.3	6,800 *																		
150.0	59.8	6,200 *	150.0	64.0	6,700 *																		
155.0	58.5	5,600 *	155.0	62.6	6,500 *																		
160.0	57.2	5,000 *	160.0	61.3	6,000 *																		
165.0	55.9	4,500 *	165.0	60.0	5,400 *																		
170.0	54.6	4,100 *	170.0	58.6	4,900 *																		
175.0	53.2	3,600 *	175.0	57.2	4,400 *																		
			180.0	55.7	3,900 *																		
			185.0	54.2	3,500 *																		
Reeves	1		Reeves	1																			

Note: Designed and rated to comply with ANSI Code B30.5
Capacities based on factors other than machine stability such as structural competence are shown by asterisk * in the charts.
Refer to notes on page 24.

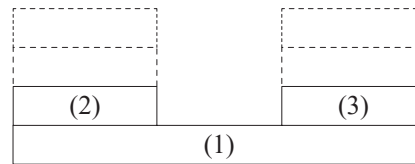
Clamshell

1. Rated loads included in the charts are the maximum allowable freely suspended loads at a given boom length, boom angle and load radius, and have been determined for the machine standing level on firm supporting surface under ideal operating conditions. The user must limit or derate rated loads to allow for adverse conditions (such as soft or uneven ground, out-of-level conditions, wind, side loads, pendulum action, jerking or sudden stopping of loads, inexperience of personnel, multiple machine lifts, and traveling with a load).
2. Rated loads do not exceed 66% of minimum tipping loads. Rated loads based on factors other than machine stability such as structural competence are shown by asterisk * in the charts.
3. The machine must be reeved and set-up as stated in the operation manual and all the instruction manuals. If these manuals are missing, obtain replacements.
 - Boom backstops are required for all boom lengths.
 - Gantry must be fully raised position for all operations.
 - Crawlers must be fully extended and be locked in position.
 - The crane must be leveled to within 1% on a firm supporting surface.
 - 50,960 lbs counterweights and without carbody weights.
4. Do not attempt to lift where no rating are shown as crane may tip or collapse.
5. Attempting to lift more than rated loads may cause machine to tip or collapse. Do not tip machine to determine capacity.
6. Weight of bucket, slings and other lifting devices are a part of the total load. Their total weight must be subtracted from the rated load to obtain the weight that can be lifted.
7. The boom should be erected over the front of the crawlers, not laterally.

8. Least stable position is over the side.
9. Maximum hoist load for number of reeving parts of line for hoist rope.

No. of Parts of line	1
Maximum Loads (lbs)	25,000

10. Assembling the counterweight
 - 50,960 lbs counterweight (No.1 to No.3)
 - Without carbody weight.



COUNTERWEIGHTS



CARBODY WEIGHTS

11. Lifting capacities listed apply only to the machine as originally manufactured and designed by KOBELCO CONSTRUCTION MACHINERY CO.,LTD. Modifications to this machine or use of equipment other than that specified can reduce operating capacity.

Operation of this equipment in excess of rated loads or disregard of instruction voids the warranty.

CK1200G-3 HDO LIFTING CHART

Clamshell

Boom :

Welded lattice construction using tubular, high-tensile steel chords with pin connections between each section.

Basic boom length : 50 ft (15.2 m)

Max. boom length : 120 ft (36.6 m)

Limit on clamshell bucket weight : 4,600 lbs (2,100 kg)

Optional tagline : Hydraulic operated type and spring type.

Boom Component Chart :

Boom length ft (m)	Boom arrangement
50 (15.2)	Base-Tip
60 (18.3)	Base-A-Tip
70 (21.3)	Base-A-A-Tip, Base-B-Tip
80 (24.4)	Base-A-B-Tip
90 (27.4)	Base-A-A-B-Tip, Base-B-B-Tip, Base-D-Tip
100 (30.5)	Base-A-B-B-Tip, Base-A-D-Tip
110 (33.5)	Base-A-A-B-B-Tip, Base-A-A-D-Tip, Base-B-D-Tip
120 (36.6)	Base-A-B-D-Tip

Base = Boom Base

Insert : A = 10 ft (3.0 m)

B = 20 ft (6.1 m)

C = 40 ft (12.2 m)

D = 40 ft (12.2 m) with Lug

Tip = Boom Tip

1. Figures represent maximum allowable capacity, and assume level, ground and ideal working conditions.
2. Capacities are calculated at 66% of the minimum tipping loads.
3. Capacities are maximum recommended by PCSA Standard #4. Allowances must be made by the user for such unfavorable conditions as a sort of uneven supporting surface, rapid cycle operations, or bucket.
4. The combined weight of the bucket and load must not exceed these capacities.

Counterweights : 50,960 lbs Without carbody weights

50' Boom			60' Boom			70' Boom		
Load Radius (ft)	Boom Angle (deg.)	360° Rated Load (lbs)	Load Radius (ft)	Boom Angle (deg.)	360° Rated Load (lbs)	Load Radius (ft)	Boom Angle (deg.)	360° Rated Load (lbs)
26.0	64.4	25,000 *	30.0	64.8	25,000 *	34.0	65.0	25,000 *
28.0	61.8	25,000 *	32.0	62.6	25,000 *	36.0	63.2	25,000 *
30.0	59.2	25,000 *	34.0	60.4	25,000 *	38.0	61.3	25,000 *
32.0	56.4	25,000 *	36.0	58.2	25,000 *	40.0	59.4	25,000 *
34.0	53.6	25,000 *	38.0	55.9	25,000 *	45.0	54.5	22,700
36.0	50.7	25,000 *	40.0	53.5	25,000 *	50.0	49.2	19,600
38.0	47.6	25,000 *	45.0	47.2	22,900	55.0	43.5	17,200
40.0	44.3	25,000 *	50.0	40.2	19,800	60.0	37.1	15,200
45.0	35.2	25,000 * 23,100	55.0	31.9	17,400			

Refer to notes on page 39.

Clamshell

Counterweights : 50,960 lbs Without carbody weights

80' Boom			90' Boom			100' Boom		
Load Radius (ft)	Boom Angle (deg.)	360° Rated Load (lbs)	Load Radius (ft)	Boom Angle (deg.)	360° Rated Load (lbs)	Load Radius (ft)	Boom Angle (deg.)	360° Rated Load (lbs)
40.0	63.6	25,000 *	45.0	63.2	21,600 *	50.0	62.9	18,500 *
45.0	59.5	22,500	50.0	59.5	19,200	55.0	59.6	16,500
50.0	55.2	19,400	55.0	55.8	16,800	60.0	56.2	14,600
55.0	50.7	17,000	60.0	51.8	14,800	65.0	52.6	12,800
60.0	45.8	15,000	65.0	47.6	13,000	70.0	48.9	11,500
65.0	40.5	13,200	70.0	43.0	11,700	75.0	45.0	10,400
70.0	34.6	11,900	75.0	38.1	10,600	80.0	40.7	9,300
			80.0	32.5	9,500	85.0	36.0	8,400
						90.0	30.8	7,700
110' Boom			120' Boom					
Load Radius (ft)	Boom Angle (deg.)	360° Rated Load (lbs)	Load Radius (ft)	Boom Angle (deg.)	360° Rated Load (lbs)			
55.0	62.6	15,900 *	60.0	62.4	13,900 *			
60.0	59.6	14,300	65.0	59.7	12,600			
65.0	56.5	12,600	70.0	56.8	11,200			
70.0	53.3	11,200	75.0	53.9	9,900			
75.0	50.0	9,900	80.0	50.9	9,000			
80.0	46.5	9,000	85.0	47.7	8,200			
85.0	42.7	8,200	90.0	44.4	7,300			
90.0	38.7	7,300	95.0	40.8	6,600			
95.0	34.3	6,600	100.0	37.0	6,000			
			105.0	32.8	5,500			

Refer to notes on page 39.

Barge

1. Rated loads included in the charts are the maximum allowable freely suspended loads at a given boom length, boom angle and load radius, and have been determined for the machine standing level on firm supporting surface under ideal operating conditions. The user must limit or derate rated loads to allow for adverse conditions (such as soft or uneven ground, out-of-level conditions, wind, side loads, pendulum action, jerking or sudden stopping of loads, inexperience of personnel, multiple machine lifts, and traveling with a load).

2. Rated loads do not exceed 75% of minimum tipping loads. Rated loads based on factors other than machine stability such as structural competence are shown by asterisk * in the charts.

3. The machine must be reeved and set-up as stated in the operation manual and all the instruction manuals if these manuals are missing, obtain replacements.

- Machine shall be positively secured to prevent shifting.
- Boom backstops are required for all boom lengths.
- Gantry must be fully raised position for all operations.
- Crawlers must be fully extended and be locked in position.
- 76,320 lbs Counterweight
Counterweights are fully installed.
- 44,100 lbs Carbody weight
Carbody weights are fully installed.

4. Do not attempt to lift where no ratings are shown as crane may tip or collapse.

5. Attempting to lift more than rated loads may cause machine to tip or collapse. Do not tip machine to determine capacity.

6. Weight of hooks, hook blocks, slings and other lifting devices are a part of the total load. Their total weight must be subtracted from the rated load to obtain the weight that can be lifted.

7. When lifting over boom point with jib or auxiliary sheave, rated loads for the boom must be deducted as shown below.

Jib Length	Aux Sheave	30 ft	40 ft	50 ft	60 ft	70 ft
Deductions (lbs)	700	Not applicable				

When auxiliary sheave is used for 10 or 9 reeving parts of line, it is not required to deduct 700 lbs from rated loads.

8. To install the jib is prohibited when the machine on the barge.

9. The total load that can be lifted over an auxiliary sheave is the value for 700 lbs deducted from rated load for the boom without auxiliary sheave, but it should not exceed auxiliary maximum hoist loads.

10. Boom lengths that can attach auxiliary sheave are from 50 ft (15.2 m) to 220 ft (67.1 m).

11. The boom should be erected over the front of the crawlers, not laterally.

12. Least stable position is over the side.

13. Maximum hoist load for number of reeving parts of line for hoist rope.

Main Boom Hoist Loads

No. of Parts of line	1	2	3	4	5
Maximum Loads (lbs)	25,000	50,000	75,000	100,000	125,000

No. of Parts of line	6	7	8	9*	10*
Maximum Loads (lbs)	150,000	175,000	200,000	225,000	240,000

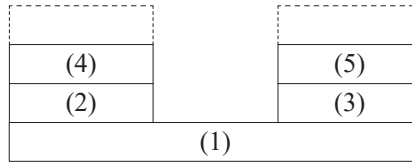
*Use auxiliary sheave.

Auxiliary Hoist Loads

No. of Parts of line	1	2
Maximum Loads (lbs)	25,000	50,000

14. Assembling the counterweight

- 76,320 lbs counterweight (No.1 to No.5)
- 44,100 lbs carbody weight.



COUNTERWEIGHTS



CARBODY WEIGHTS

15. Weight of recommended hook block.

Hook Block	120 USt	77 USt	39 USt	BALL HOOK
Weight (lbs)	3,750	1,990	1,545	1,000

WARNING

If the weight of hook block to be used is lighter than the recommended weight, the jib may turnover backward or it is difficult to lower the empty hook block.

16. Lifting capacities listed apply only to the machine as originally manufactured and designed by KOBELCO CONSTRUCTION MACHINERY CO.,LTD. Modifications to this machine or use of equipment other than that specified can reduce operating capacity.

17. Designed and rated to comply with ANSI Code B30.5.

Operation of this equipment in excess of rated loads or disregard of instruction voids the warranty.

Barge

Counterweights : 76,320 lbs Carbody weights : 44,100 lbs

50' Boom					60' Boom					70' Boom							
360° Rated Load (lbs)					360° Rated Load (lbs)					360° Rated Load (lbs)							
Load Radius (ft)	Boom Angle (deg.)	0 Degree Machine List	1 Degree Machine List	2 Degree Machine List	3 Degree Machine List	Load Radius (ft)	Boom Angle (deg.)	0 Degree Machine List	1 Degree Machine List	2 Degree Machine List	3 Degree Machine List	Load Radius (ft)	Boom Angle (deg.)	0 Degree Machine List	1 Degree Machine List	2 Degree Machine List	3 Degree Machine List
12.0	81.4	240,000*				13.5	81.4	210,000*				15.0	81.4	190,000*			
13.0	80.2	220,000*				14.0	80.9	204,000*				16.0	80.5	177,000*			
14.0	79.0	206,000*				15.0	79.9	190,000*				17.0	79.7	163,000*			
15.0	77.9	191,000*	191,000*			16.0	78.9	177,000*	168,100			18.0	78.9	150,000*	142,900		
16.0	76.7	177,000*	177,000*			17.0	78.0	163,000*	163,000*			19.0	78.0	142,100*	137,800		
17.0	75.5	163,000*	163,000*			18.0	77.0	150,000*	150,000*			20.0	77.2	135,000*	132,600		
18.0	74.3	150,000*	150,000*	138,800		19.0	76.0	142,100*	142,100*			22.0	75.5	122,700*	117,400		
19.0	73.1	142,100*	142,100*	133,700		20.0	75.0	135,000*	135,000*			24.0	73.8	111,700	103,600		
20.0	71.9	135,000*	135,000*	128,700		22.0	73.0	122,700*	118,800	106,200		26.0	72.1	99,200	92,700	86,200	
22.0	69.5	122,800*	120,600	113,200	104,500	24.0	71.0	111,700	104,800	98,100	84,700	28.0	70.3	89,000	83,700	79,100	70,200
24.0	67.0	111,900	106,400	100,700	95,900	26.0	69.0	99,200	93,800	88,900	82,100	30.0	68.6	80,600	76,400	72,500	68,200
26.0	64.4	99,600	95,100	90,600	86,900	28.0	66.9	89,200	84,700	80,700	76,700	32.0	66.8	73,800	70,100	66,800	63,700
28.0	61.8	89,500	85,800	82,200	79,200	30.0	64.8	80,900	77,100	73,800	70,600	34.0	65.0	67,900	64,800	62,000	59,300
30.0	59.2	81,100	78,200	75,300	72,800	32.0	62.6	73,800	70,800	68,100	65,400	36.0	63.2	62,800	60,100	57,700	55,300
32.0	56.4	74,200	71,800	69,300	67,300	34.0	60.4	68,100	65,500	63,200	60,900	38.0	61.3	58,400	56,000	54,000	52,000
34.0	53.6	68,300	66,300	64,300	62,500	36.0	58.2	63,000	60,900	58,700	56,800	40.0	59.4	54,400	52,500	50,700	48,600
36.0	50.7	63,200	61,500	59,800	58,400	38.0	55.9	58,600	56,700	54,800	53,300	45.0	54.5	46,500	45,100	43,700	42,500
38.0	47.6	58,800	57,500	56,100	54,800	40.0	53.5	54,600	53,100	51,500	50,200	50.0	49.2	40,500	39,700	38,700	37,800
						45.0	47.2	46,700	45,800	44,600	43,600	55.0	43.5	35,900	35,200	34,500	33,900
Reeves		10	8	6	5	Reeves		9	7	5	4	Reeves		8	6	4	3
80' Boom					90' Boom					100' Boom							
360° Rated Load (lbs)					360° Rated Load (lbs)					360° Rated Load (lbs)							
Load Radius (ft)	Boom Angle (deg.)	0 Degree Machine List	1 Degree Machine List	2 Degree Machine List	3 Degree Machine List	Load Radius (ft)	Boom Angle (deg.)	0 Degree Machine List	1 Degree Machine List	2 Degree Machine List	3 Degree Machine List	Load Radius (ft)	Boom Angle (deg.)	0 Degree Machine List	1 Degree Machine List	2 Degree Machine List	3 Degree Machine List
16.5	81.4	171,000*				18.0	81.4	150,000*				19.5	81.4	137,500*			
17.0	81.0	163,000*				19.0	80.7	140,000*				20.0	81.1	135,000*			
18.0	80.3	150,000*				20.0	80.1	135,000*				22.0	79.9	122,200*			
19.0	79.6	142,100*				22.0	78.8	122,400*				24.0	78.8	111,300			
20.0	78.8	135,000*				24.0	77.5	111,500	100,600			26.0	77.6	98,700	89,300		
22.0	77.4	122,400*	114,700			26.0	76.2	98,900	90,600			28.0	76.4	88,600	81,000		
24.0	75.9	111,500	102,300			28.0	74.8	88,800	82,000	68,800		30.0	75.2	80,200	73,800		
26.0	74.4	98,900	91,500			30.0	73.5	80,400	74,700	67,800		32.0	74.0	73,100	67,800	60,100	
28.0	72.9	88,800	82,700	76,200		32.0	72.2	73,400	68,600	64,400		34.0	72.8	67,200	62,700	58,200	
30.0	71.4	80,400	75,400	70,800	60,400	34.0	70.8	67,400	63,400	59,800	51,700	36.0	71.6	62,100	58,200	54,700	45,500
32.0	69.9	73,400	69,100	65,400	59,300	36.0	69.5	62,300	58,900	55,700	51,100	38.0	70.4	57,700	54,200	51,300	45,100
34.0	68.3	67,400	63,800	60,600	57,200	38.0	68.1	57,900	54,800	52,100	49,500	40.0	69.2	53,700	50,900	48,200	44,700
36.0	66.8	62,300	59,300	56,500	54,000	40.0	66.7	54,000	51,400	48,600	46,900	45.0	66.1	45,800	43,700	41,700	39,900
38.0	65.2	57,900	55,400	52,900	50,700	45.0	63.2	46,000	44,300	42,300	40,700	50.0	62.9	39,900	38,300	36,700	35,100
40.0	63.6	54,200	51,800	49,600	47,600	50.0	59.5	40,100	38,800	37,400	36,100	55.0	59.6	35,000	33,800	32,700	31,500
45.0	59.5	46,200	44,600	43,000	41,600	55.0	55.8	35,400	34,400	33,300	32,200	60.0	56.2	31,300	30,300	29,200	28,300
50.0	55.2	40,100	39,100	37,900	36,800	60.0	51.8	31,500	30,700	29,900	29,100	65.0	52.6	27,900	27,200	26,400	25,700
55.0	50.7	35,400	34,700	33,800	32,900	65.0	47.6	28,400	27,800	27,100	26,500	70.0	48.9	25,300	24,700	24,100	23,500
60.0	45.8	31,700	31,100	30,400	29,800	70.0	43.0	25,700	25,300	24,800	24,300	75.0	45.0	23,100	22,600	22,100	21,600
65.0	40.5	28,600	28,100	27,600	27,100							80.0	40.7	21,100	20,800	20,400	20,000
Reeves		7	5	4	3	Reeves		6	5	3	3	Reeves		6	4	3	2

Refer to notes on page 42.

CK1200G-3 HDO LIFTING CHART

Barge

Counterweights : 76,320 lbs Carbody weights : 44,100 lbs

110' Boom					120' Boom					130' Boom							
		360° Rated Load (lbs)					360° Rated Load (lbs)					360° Rated Load (lbs)					
Load Radius (ft)	Boom Angle (deg.)	0 Degree Machine List	1 Degree Machine List	2 Degree Machine List	3 Degree Machine List	Load Radius (ft)	Boom Angle (deg.)	0 Degree Machine List	1 Degree Machine List	2 Degree Machine List	3 Degree Machine List	Load Radius (ft)	Boom Angle (deg.)	0 Degree Machine List	1 Degree Machine List	2 Degree Machine List	3 Degree Machine List
20.9	81.4	128,600*				22.4	81.4	121,000*				23.9	81.4	100,000*			
22.0	80.8	122,000*				24.0	80.6	111,100				24.0	81.4	100,000*			
24.0	79.8	111,300				26.0	79.7	98,500				26.0	80.5	98,300			
26.0	78.7	98,500				28.0	78.7	88,400				28.0	79.6	88,100			
28.0	77.7	88,400	80,000			30.0	77.7	80,000	72,100			30.0	78.7	79,800			
30.0	76.6	80,000	73,000			32.0	76.7	72,900	66,800			32.0	77.8	72,700	65,500		
32.0	75.5	72,900	67,100			34.0	75.8	67,000	61,700			34.0	76.9	66,700	61,100		
34.0	74.4	67,000	62,000			36.0	74.8	61,900	57,300	48,000		36.0	76.0	61,700	56,700		
36.0	73.3	61,900	57,600	52,700		38.0	73.8	57,500	53,400	47,500		38.0	75.1	57,300	52,800		
38.0	72.3	57,500	53,600	50,400		40.0	72.8	53,500	49,900	46,300		40.0	74.1	53,300	49,500	42,400	
40.0	71.2	53,500	50,300	47,400	39,900	45.0	70.3	45,600	43,000	40,500	35,300	45.0	71.8	45,400	42,500	40,000	
45.0	68.4	45,600	43,200	41,000	38,300	50.0	67.7	39,400	37,600	35,700	33,000	50.0	69.5	39,400	37,300	35,100	31,000
50.0	65.5	39,600	37,800	36,100	34,500	55.0	65.1	34,800	33,300	31,700	30,300	55.0	67.1	34,600	32,900	31,100	29,500
55.0	62.6	34,800	33,500	32,100	30,900	60.0	62.4	30,800	29,600	28,400	27,300	60.0	64.7	30,600	29,300	28,000	26,800
60.0	59.6	31,000	29,900	28,700	27,700	65.0	59.7	27,700	26,700	25,700	24,800	65.0	62.2	27,500	26,400	25,300	24,300
65.0	56.5	27,700	26,900	26,000	25,100	70.0	56.8	25,100	24,200	23,300	22,500	70.0	59.7	24,900	23,900	22,900	22,100
70.0	53.3	25,100	24,400	23,700	23,000	75.0	53.9	22,700	22,000	21,300	20,700	75.0	57.1	22,400	21,700	20,900	20,200
75.0	50.0	22,900	22,300	21,700	21,100	80.0	50.9	20,700	20,200	19,600	19,100	80.0	54.4	20,500	19,900	19,300	18,700
80.0	46.5	20,900	20,400	19,900	19,400	85.0	47.7	19,100	18,600	18,100	17,700	85.0	51.6	18,900	18,300	17,800	17,300
85.0	42.7	19,100	18,800	18,400	18,100	90.0	44.4	17,600	17,200	16,800	16,400	90.0	48.8	17,400	16,900	16,400	16,000
						95.0	40.8	16,300	16,000	15,600	15,300	95.0	45.7	16,000	15,600	15,200	14,700
												100.0	42.5	14,700	14,500	14,200	13,900
												105.0	39.1	13,800	13,600	13,300	13,100
Reeves		6	4	3	2	Reeves		5	3	2	2	Reeves		4	3	2	2
140' Boom					150' Boom					160' Boom							
		360° Rated Load (lbs)					360° Rated Load (lbs)					360° Rated Load (lbs)					
Load Radius (ft)	Boom Angle (deg.)	0 Degree Machine List	1 Degree Machine List	2 Degree Machine List	3 Degree Machine List	Load Radius (ft)	Boom Angle (deg.)	0 Degree Machine List	1 Degree Machine List	2 Degree Machine List	3 Degree Machine List	Load Radius (ft)	Boom Angle (deg.)	0 Degree Machine List	1 Degree Machine List	2 Degree Machine List	3 Degree Machine List
25.4	81.4	100,000*				26.9	81.4	92,800				28.4	81.4	75,000			
26.0	81.2	98,100				28.0	81.0	87,700				30.0	80.8	75,000			
28.0	80.3	87,900				30.0	80.2	79,300				32.0	80.1	72,300			
30.0	79.5	79,500				32.0	79.4	72,300				34.0	79.4	66,300			
32.0	78.7	72,500				34.0	78.7	66,300				36.0	78.6	61,200			
34.0	77.8	66,500	60,000			36.0	77.9	61,000	54,600			38.0	77.9	56,800	50,100		
36.0	77.0	61,500	56,100			38.0	77.1	56,600	51,500			40.0	77.2	52,900	48,000		
38.0	76.1	57,000	52,300			40.0	76.3	52,600	48,300			45.0	75.3	44,900	41,200		
40.0	75.3	53,100	48,900			45.0	74.3	44,700	41,400	34,300		50.0	73.5	38,800	36,100	30,500	
45.0	73.2	45,100	42,100	37,700		50.0	72.3	38,800	36,200	33,000		55.0	71.6	33,900	31,900	29,400	
50.0	71.0	39,000	36,800	34,500		55.0	70.3	33,900	31,900	29,900		60.0	69.7	30,200	28,400	26,700	22,200
55.0	68.8	34,300	32,500	30,600	27,500	60.0	68.3	29,900	28,400	26,900	24,300	65.0	67.8	26,800	25,400	24,100	21,700
60.0	66.6	30,400	28,900	27,300	26,000	65.0	66.2	26,800	25,500	24,200	22,900	70.0	65.8	24,200	22,900	21,700	20,600
65.0	64.4	27,100	25,900	24,700	23,600	70.0	64.1	24,200	23,000	21,800	20,900	75.0	63.8	21,800	20,800	19,800	19,000
70.0	62.1	24,400	23,500	22,500	21,600	75.0	61.9	21,800	20,800	19,900	19,100	80.0	61.8	19,800	19,000	18,200	17,500
75.0	59.7	22,200	21,400	20,500	19,700	80.0	59.7	19,800	19,000	18,100	17,500	85.0	59.7	18,200	17,500	16,700	16,100
80.0	57.3	20,200	19,500	18,700	18,100	85.0	57.5	18,000	17,400	16,800	16,200	90.0	57.6	16,700	16,100	15,400	14,800
85.0	54.8	18,500	17,800	17,200	16,700	90.0	55.2	16,700	16,100	15,500	15,000	95.0	55.5	15,400	14,800	14,100	13,700
90.0	52.3	16,900	16,400	15,900	15,400	95.0	52.8	15,400	14,800	14,200	13,900	100.0	53.3	14,100	13,700	13,200	12,700
95.0	49.6	15,600	15,200	14,800	14,400	100.0	50.4	14,100	13,700	13,300	12,900	105.0	51.0	13,200	12,700	12,200	11,800
100.0	46.9	14,500	14,100	13,700	13,300	105.0	47.8	13,200	12,700	12,300	11,900	110.0	48.6	12,100	11,700	11,300	11,000
105.0	44.0	13,400	13,100	12,800	12,500	110.0	45.2	12,100	11,700	11,400	11,100	115.0	46.2	11,200	10,900	10,600	10,300
110.0	40.9	12,500	12,200	11,900	11,700	115.0	42.4	11,200	11,000	10,700	10,500	120.0	43.7	10,500	10,200	9,800	9,600
115.0	37.7	11,600	11,400	11,200	11,000	120.0	39.5	10,500	10,300	10,100	9,900	125.0	41.0	9,700	9,500	9,200	9,000
												130.0	38.1	9,200	8,800	8,600	8,400
Reeves		4	3	2	2	Reeves		4	3	2	2	Reeves		3	3	2	2

Refer to notes on page 42.

CK1200G-3 HDO LIFTING CHART

Barge

Counterweights : 76,320 lbs Carbody weights : 44,100 lbs

170' Boom					180' Boom					190' Boom							
		360° Rated Load (lbs)					360° Rated Load (lbs)					360° Rated Load (lbs)					
Load Radius (ft)	Boom Angle (deg.)	0 Degree Machine List	1 Degree Machine List	2 Degree Machine List	3 Degree Machine List	Load Radius (ft)	Boom Angle (deg.)	0 Degree Machine List	1 Degree Machine List	2 Degree Machine List	3 Degree Machine List	Load Radius (ft)	Boom Angle (deg.)	0 Degree Machine List	1 Degree Machine List	2 Degree Machine List	3 Degree Machine List
29.9	81.4	75,000*				31.4	81.4	73,400				32.9	81.4	66,300*			
30.0	81.4	75,000*				32.0	81.2	71,800				34.0	81.1	65,400			
32.0	80.7	72,000				34.0	80.6	65,900				36.0	80.5	60,400			
34.0	80.0	66,100				36.0	79.9	60,600				38.0	79.8	55,900			
36.0	79.3	60,800				38.0	79.3	56,200				40.0	79.2	52,000			
38.0	78.6	56,400	46,200			40.0	78.6	52,200	42,100			45.0	77.7	44,000	37,600		
40.0	77.9	52,400	45,700			45.0	77.0	44,300	40,000			50.0	76.1	37,900	34,300		
45.0	76.2	44,500	40,700			50.0	75.4	38,100	35,100			55.0	74.6	33,000	30,400		
50.0	74.5	38,500	35,700			55.0	73.7	33,200	30,900	24,900		60.0	73.0	29,100	27,100	22,100	
55.0	72.7	33,700	31,400	27,100		60.0	72.0	29,500	27,500	24,200		65.0	71.4	26,000	24,100	21,500	15,900
60.0	70.9	29,700	27,800	25,900		65.0	70.3	26,200	24,600	22,900	17,700	70.0	69.8	23,100	21,700	20,300	15,600
65.0	69.1	26,400	24,900	23,500	19,500	70.0	68.6	23,500	22,100	20,800	17,400	75.0	68.2	20,900	19,600	18,500	15,200
70.0	67.3	23,800	22,500	21,300	19,200	75.0	66.9	21,100	20,000	18,800	17,000	80.0	66.6	18,900	17,800	16,800	15,000
75.0	65.5	21,600	20,400	19,400	18,200	80.0	65.2	19,100	18,200	17,300	16,300	85.0	64.9	17,100	16,200	15,300	14,400
80.0	63.6	19,600	18,600	17,700	16,800	85.0	63.4	17,600	16,700	15,900	15,100	90.0	63.2	15,600	14,800	14,100	13,400
85.0	61.7	17,800	17,000	16,200	15,500	90.0	61.6	16,000	15,300	14,500	13,800	95.0	61.5	14,300	13,600	13,000	12,300
90.0	59.8	16,300	15,600	14,900	14,300	95.0	59.8	14,700	14,000	13,300	12,700	100.0	59.8	13,200	12,500	11,900	11,300
95.0	57.8	14,900	14,400	13,800	13,200	100.0	57.9	13,400	12,800	12,200	11,800	105.0	58.0	12,100	11,400	10,900	10,400
100.0	55.8	13,800	13,300	12,700	12,200	105.0	56.0	12,300	11,800	11,300	10,900	110.0	56.2	11,000	10,500	10,000	9,600
105.0	53.7	12,700	12,200	11,700	11,400	110.0	54.1	11,400	10,900	10,500	10,100	115.0	54.4	10,100	9,700	9,300	8,800
110.0	51.6	11,600	11,300	10,900	10,600	115.0	52.1	10,500	10,000	9,700	9,400	120.0	52.5	9,400	8,900	8,600	8,100
115.0	49.4	11,000	10,500	10,200	9,900	120.0	50.0	9,900	9,200	9,000	8,700	125.0	50.6	8,800	8,200	7,900	7,500
120.0	47.1	10,100	9,800	9,500	9,200	125.0	47.9	9,000	8,600	8,300	8,100	130.0	48.6	7,900	7,500	7,200	6,900
125.0	44.7	9,400	9,100	8,900	8,600	130.0	45.7	8,300	8,000	7,700	7,500	135.0	46.5	7,200	6,900	6,700	6,400
130.0	42.3	8,800	8,400	8,200	8,000	135.0	43.4	7,700	7,400	7,200	7,000	140.0	44.4	6,800	6,400	6,200	5,900
135.0	39.7	8,100	7,800	7,600	7,400	140.0	41.0	7,200	6,900	6,700	6,500	145.0	42.2	6,100	5,900	5,700	5,500
140.0	37.0	7,400	7,300	7,100	6,900	145.0	38.5	6,600	6,400	6,200	6,000	150.0	39.9	5,700	5,500	5,300	5,100
						150.0	35.9	6,100	6,000	5,800	5,600	155.0	37.4	5,200	5,100	4,900	4,700
Reeves		3	2	2	2	Reeves		3	2	2	2	Reeves		3	2	2	2
200' Boom					210' Boom					220' Boom							
		360° Rated Load (lbs)					360° Rated Load (lbs)					360° Rated Load (lbs)					
Load Radius (ft)	Boom Angle (deg.)	0 Degree Machine List	1 Degree Machine List	2 Degree Machine List	3 Degree Machine List	Load Radius (ft)	Boom Angle (deg.)	0 Degree Machine List	1 Degree Machine List	2 Degree Machine List	3 Degree Machine List	Load Radius (ft)	Boom Angle (deg.)	0 Degree Machine List	1 Degree Machine List	2 Degree Machine List	3 Degree Machine List
34.4	81.4	50,000*				35.9	81.4	50,000*				37.4	81.4	48,200*			
36.0	80.9	50,000*				36.0	81.4	50,000*				38.0	81.2	47,800*			
38.0	80.4	50,000*				38.0	80.8	50,000*				40.0	80.7	46,700*			
40.0	79.8	50,000*				40.0	80.3	50,000*				45.0	79.4	43,400			
45.0	78.3	44,000	34,200			45.0	78.9	43,800				50.0	78.1	37,400			
50.0	76.8	37,900	33,300			50.0	77.5	37,600				55.0	76.7	32,600			
55.0	75.4	33,000	30,400			55.0	76.1	32,800	29,200			60.0	75.4	28,600	25,700		
60.0	73.9	29,300	27,000	20,100		60.0	74.7	28,800	26,600			65.0	74.0	25,300	23,300		
65.0	72.4	26,000	24,200	19,600		65.0	73.2	25,700	23,700	17,800		70.0	72.7	22,700	20,800	15,800	
70.0	70.9	23,300	21,700	19,200	14,100	70.0	71.8	22,900	21,300	17,400		75.0	71.3	20,200	18,800	15,400	10,900
75.0	69.3	20,900	19,600	18,300	13,800	75.0	70.4	20,700	19,300	17,000	12,300	80.0	69.9	18,200	17,100	15,000	10,700
80.0	67.8	18,900	17,700	16,700	13,400	80.0	68.9	18,700	17,500	16,100	12,000	85.0	68.5	16,700	15,600	14,300	10,500
85.0	66.2	17,100	16,100	15,200	13,200	85.0	67.4	16,900	15,900	14,900	11,600	90.0	67.1	15,200	14,200	13,200	10,200
90.0	64.7	15,600	14,800	14,000	13,000	90.0	66.0	15,400	14,500	13,600	11,400	95.0	65.7	13,800	12,900	12,100	9,900
95.0	63.1	14,300	13,600	12,900	12,200	95.0	64.4	14,100	13,200	12,400	11,200	100.0	64.2	12,500	11,700	11,100	9,600
100.0	61.4	13,200	12,500	11,900	11,300	100.0	62.9	12,700	12,200	11,500	10,800	105.0	62.8	11,400	10,800	10,200	9,300
105.0	59.8	12,100	11,500	11,000	10,500	105.0	61.4	11,900	11,100	10,500	9,900	110.0	61.3	10,500	9,900	9,300	8,700
110.0	58.1	11,200	10,600	10,100	9,600	110.0	59.8	10,800	10,200	9,600	9,100	115.0	59.8	9,700	9,100	8,500	7,900
115.0	56.4	10,300	9,800	9,300	8,800	115.0	58.2	9,900	9,300	8,800	8,400	120.0	58.3	8,800	8,200	7,700	7,200
120.0	54.7	9,400	9,000	8,500	8,100	120.0	56.6	9,000	8,600	8,100	7,700	125.0	56.7	7,900	7,500	7,000	6,500
125.0	52.9	8,800	8,200	7,800	7,400	125.0	54.9	8,300	7,800	7,400	7,000	130.0	55.2	7,200	6,800	6,300	5,900
130.0	51.1	7,900	7,500	7,100	6,800	130.0	53.2	7,700	7,100	6,700	6,300	135.0	53.6	6,600	6,100	5,700	5,300
135.0	49.2	7,200	6,900	6,600	6,300	135.0	51.5	6,800	6,400	6,100	5,700	140.0	51.9	5,900	5,500	5,200	4,900
140.0	47.3	6,800	6,300	6,000	5,800	140.0	49.7	6,300	5,800	5,500	5,200	145.0	50.2	5,200	5,000	4,700	4,400
145.0	45.3	6,100	5,800	5,500	5,300	145.0	47.9	5,700	5,300	5,000	4,700	150.0	48.5	4,800	4,500	4,300	4,000
150.0	43.2	5,700	5,300	5,000	4,800	150.0	46.1	5,200	4,800	4,500	4,200	155.0	46.8	4,400	4,100	3,900	3,600
155.0	41.1	5,000	4,800	4,600	4,400	155.0	44.1	4,600	4,300	4,100	3,800						
160.0	38.8	4,600	4,400	4,200	4,000	160.0	42.1	4,100	3,900	3,700	3,400						
165.0	36.5	4,100	4,000	3,800	3,600												
Reeves		2	2	2	2	Reeves		2	2	2	2	Reeves		2	2	2	2

Refer to notes on page 42.

CK1200G-3 HDO LIFTING CHART

Barge

Counterweights : 76,320 lbs Carbody weights : 44,100 lbs

230' Boom															
360° Rated Load (lbs)															
Load Radius (ft)	Boom Angle (deg.)	0 Degree Machine List	1 Degree Machine List	2 Degree Machine List	3 Degree Machine List										
38.9	81.4	43,200*													
40.0	81.1	42,700*													
45.0	79.9	40,100*													
50.0	78.6	37,000													
55.0	77.3	32,100	24,800												
60.0	76.0	28,400	24,100												
65.0	74.7	25,100	22,600												
70.0	73.4	22,200	20,500	14,000											
75.0	72.1	20,000	18,500	13,700											
80.0	70.8	18,000	16,700	13,400	9,400										
85.0	69.5	16,300	15,100	13,100	9,100										
90.0	68.2	14,700	13,700	12,600	8,700										
95.0	66.8	13,400	12,600	11,700	8,500										
100.0	65.4	12,300	11,500	10,700	8,300										
105.0	64.1	11,200	10,400	9,700	8,100										
110.0	62.7	10,100	9,400	8,800	7,800										
115.0	61.3	9,200	8,500	8,000	7,300										
120.0	59.8	8,300	7,700	7,200	6,700										
125.0	58.4	7,400	7,000	6,500	6,000										
130.0	56.9	6,800	6,300	5,800	5,400										
135.0	55.4	6,100	5,600	5,200	4,800										
140.0	53.9	5,500	5,000	4,700	4,300										
145.0	52.3	4,800	4,500	4,200	3,900										
150.0	50.7	4,400	4,000	3,800	3,500										
Reeves		2	2	2	2										

Refer to notes on page 42.



Note : This catalog may contain photographs of machines with specifications, attachments and optional equipment not certified for operation in your country. Please consult KOBELCO for those items you may require. Due to our policy of continual product improvements all designs and specifications are subject to change without advance notice.

Copyright by KOBELCO CONSTRUCTION MACHINERY CO., LTD. No part of this catalog may be reproduced in any manner without notice.

KOBELCO CONSTRUCTION MACHINERY CO., LTD.

5-15, Kitashinagawa 5-chome, Shinagawa-ku, Tokyo 141-8626 JAPAN
Tel : +81-3-5789-2121 Fax : +81-3-5789-3372
URL : <https://www.kobelcocm-global.com/>

Inquiries To :

KOBELCO CONSTRUCTION MACHINERY U.S.A. INC.

22350 Merchants Way Katy, TX 77449
Tel : +1-281-888-8430
URL : <http://kcmu-cranes.com/home/>