

Hydraulic Crawler Crane

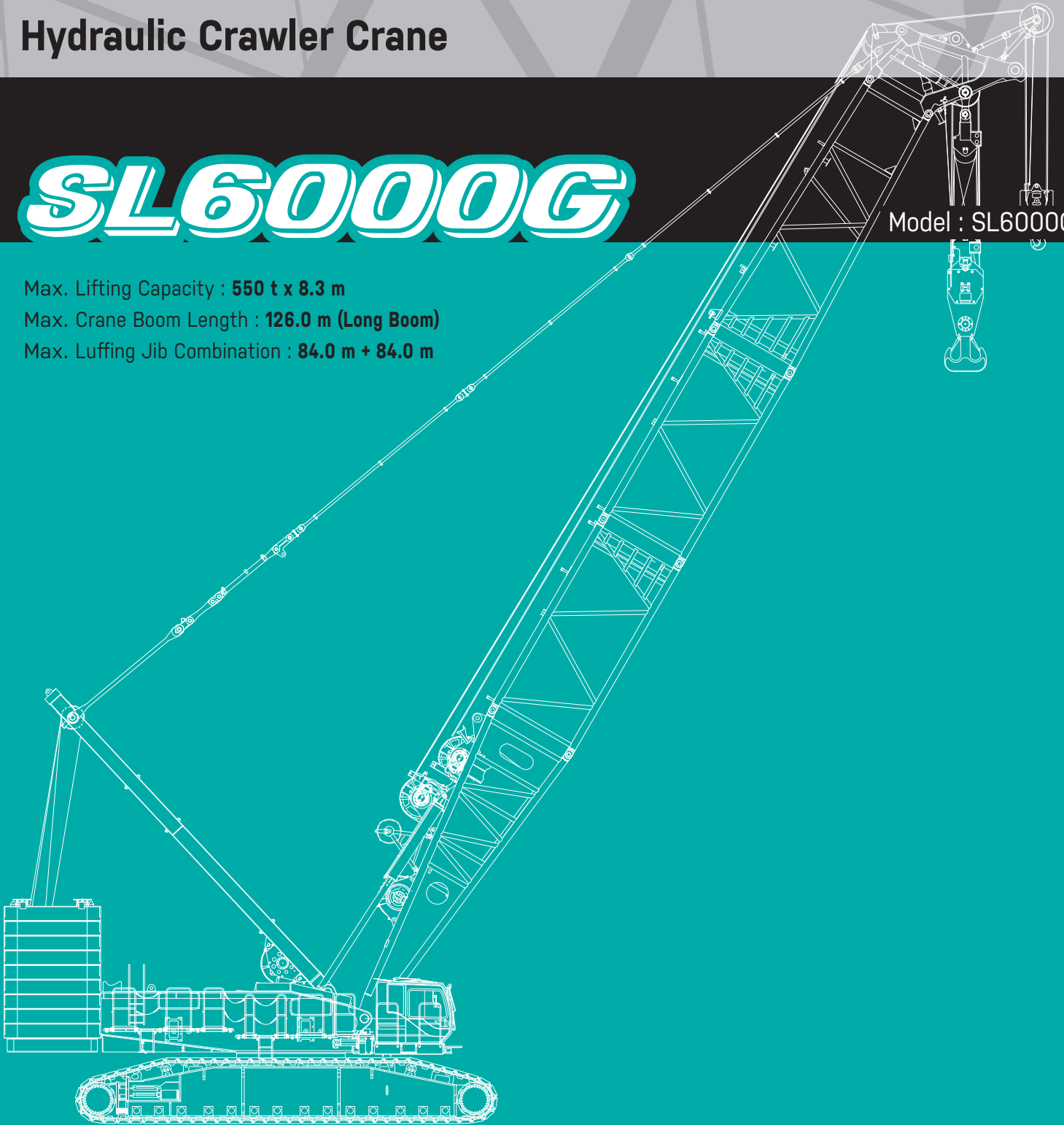
SL6000G

Max. Lifting Capacity : **550 t x 8.3 m**

Max. Crane Boom Length : **126.0 m (Long Boom)**

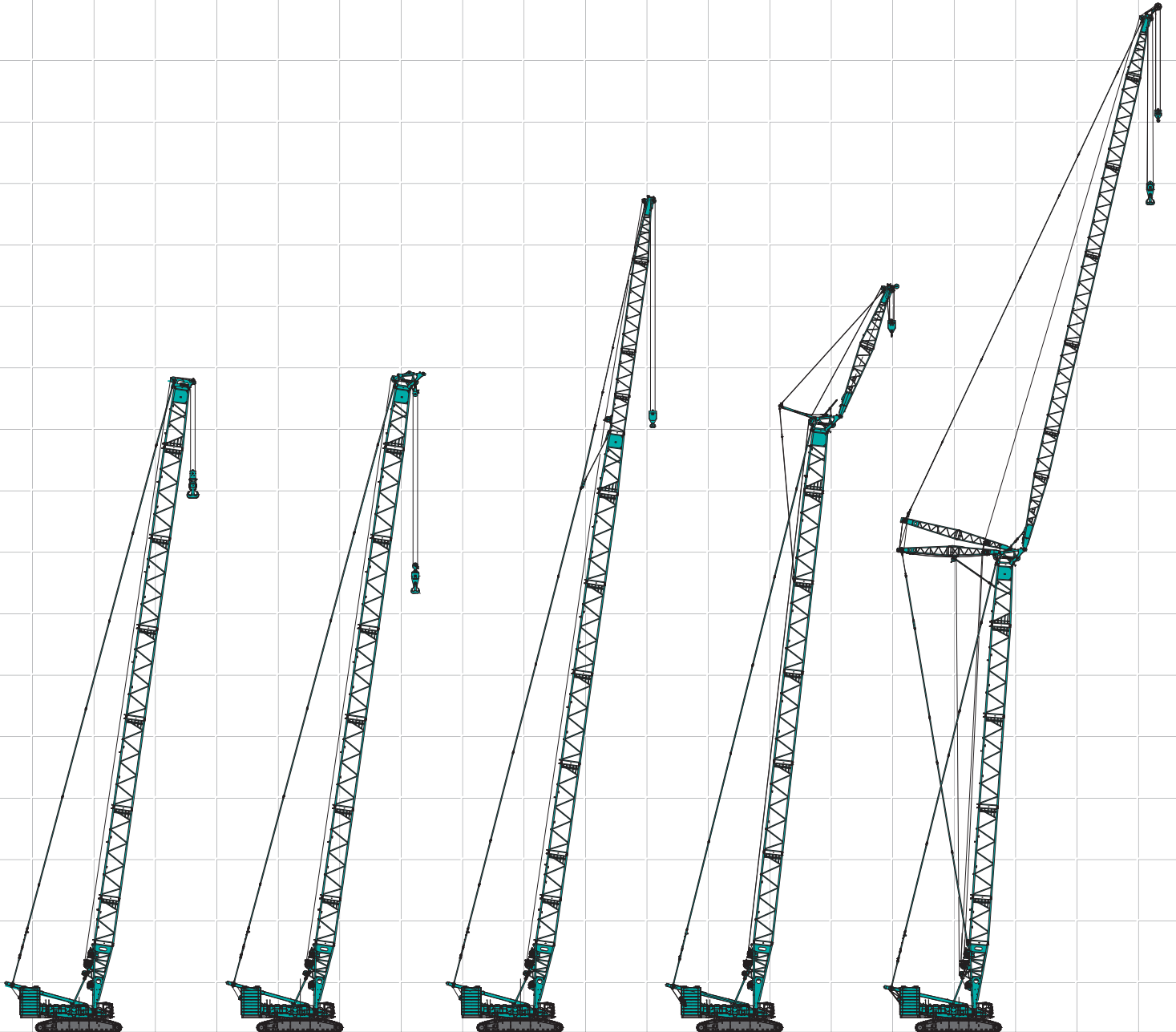
Max. Luffing Jib Combination : **84.0 m + 84.0 m**

Model : SL6000G



KOBELCO

CONFIGURATION








STD Heavy Duty Crane Boom

STD Luffing Boom

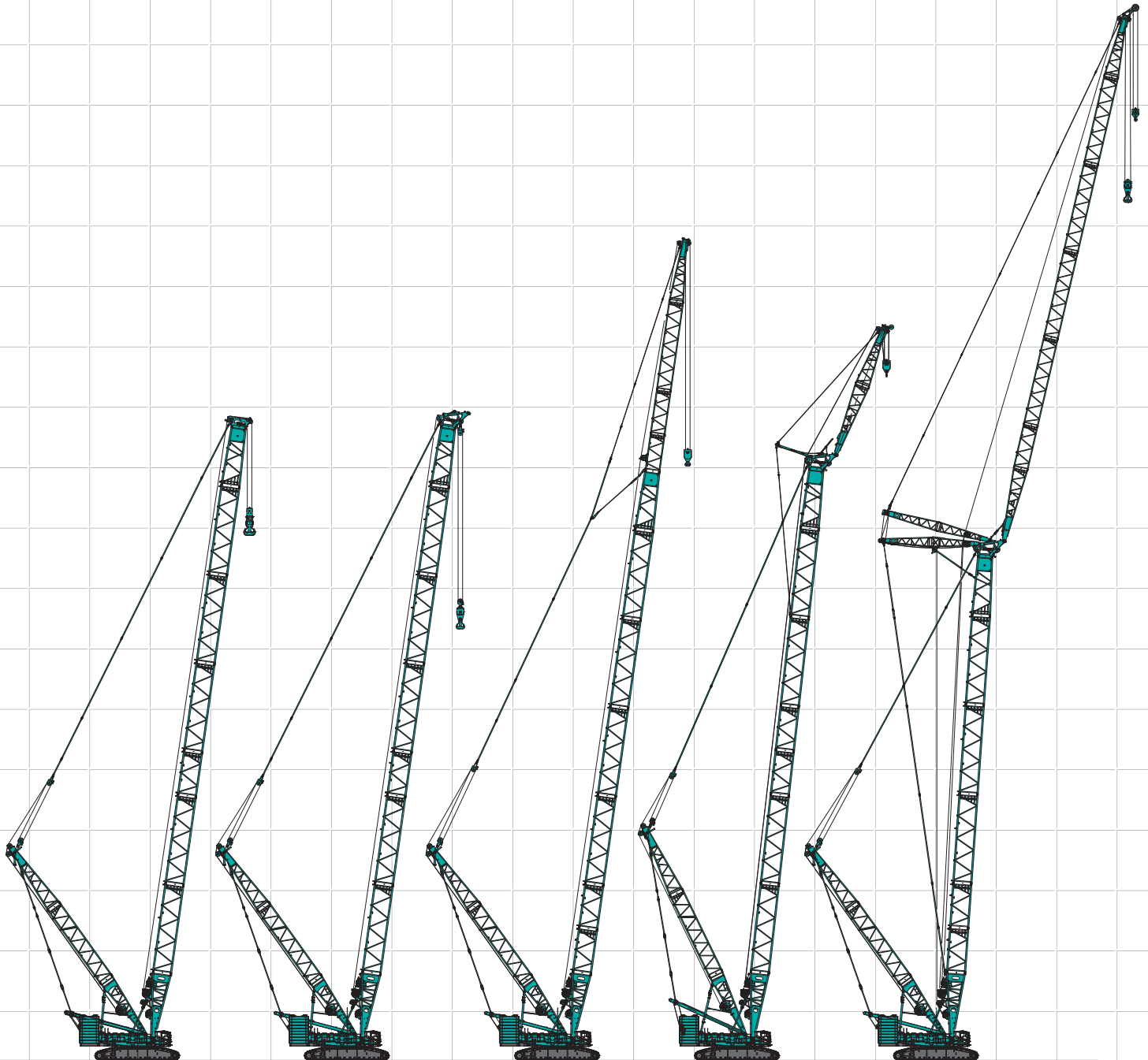
STD Long Boom

STD Heavy Fixed Jib (Type A)






STD Luffing Jib

STD	Heavy Duty Crane Boom	Luffing Boom	Long Boom	Heavy Fixed Jib (Type A)	Luffing Jib
					
Max. Lifting Capacity:	450 t x 6.7 m	300 t x 10.0 m	98 t x 18.0 m	105 t x 20.0 m	195.1 t x 14.0 m
Max. Boom Length:	84 m	84 m	108 m	–	–
Max. Combination:	–	–	–	78 m + 18 m	60 m + 72 m

The following abbreviations are used throughout this catalog:
 STD: Standard HL: Heavy Lift SHL: Super Heavy Lift



HL Heavy Duty Crane Boom HL Luffing Boom HL Long Boom HL Fixed Jib (Type B1) HL Luffing Jib

HL	Heavy Duty Crane Boom	Luffing Boom	Long Boom	Fixed Jib (Type B1)	Luffing Jib
					
Max. Lifting Capacity:	370 t x 8.3 m	300 t x 9.3 m	98 t x 20.0 m	120 t x 20.0 m	200 t x 14.4 m
Max. Boom Length:	84 m	84 m	108 m	-	-
Max. Combination:	-	-	-	78 m + 18 m	66 m + 72 m