

**KOBELCO**

HYDRAULIC CRAWLER CRANE

PRELIMINARY

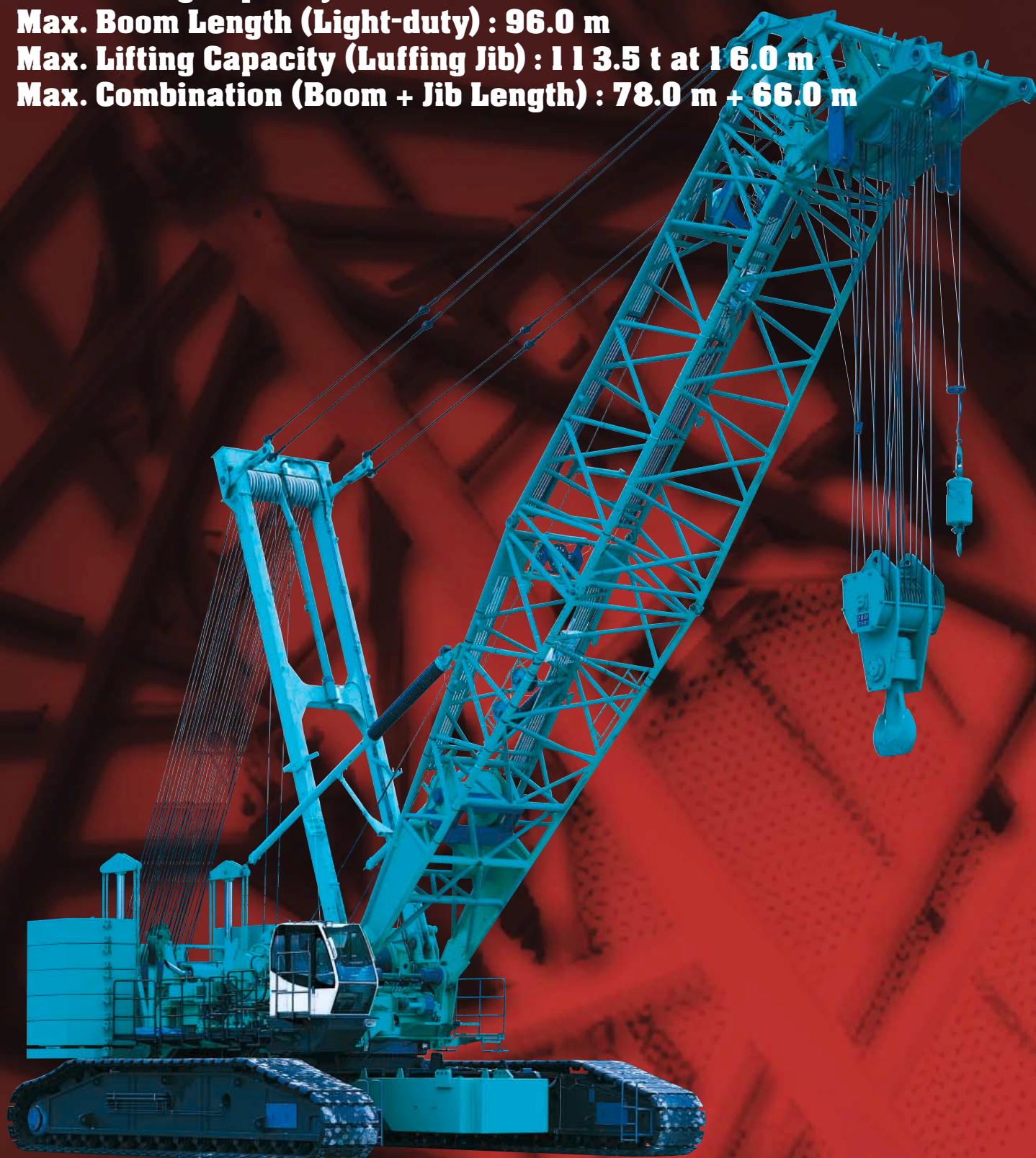
# CKE4000

**Max. Lifting Capacity : 350.0 t at 6.0 m**

**Max. Boom Length (Light-duty) : 96.0 m**

**Max. Lifting Capacity (Luffing Jib) : 113.5 t at 16.0 m**

**Max. Combination (Boom + Jib Length) : 78.0 m + 66.0 m**

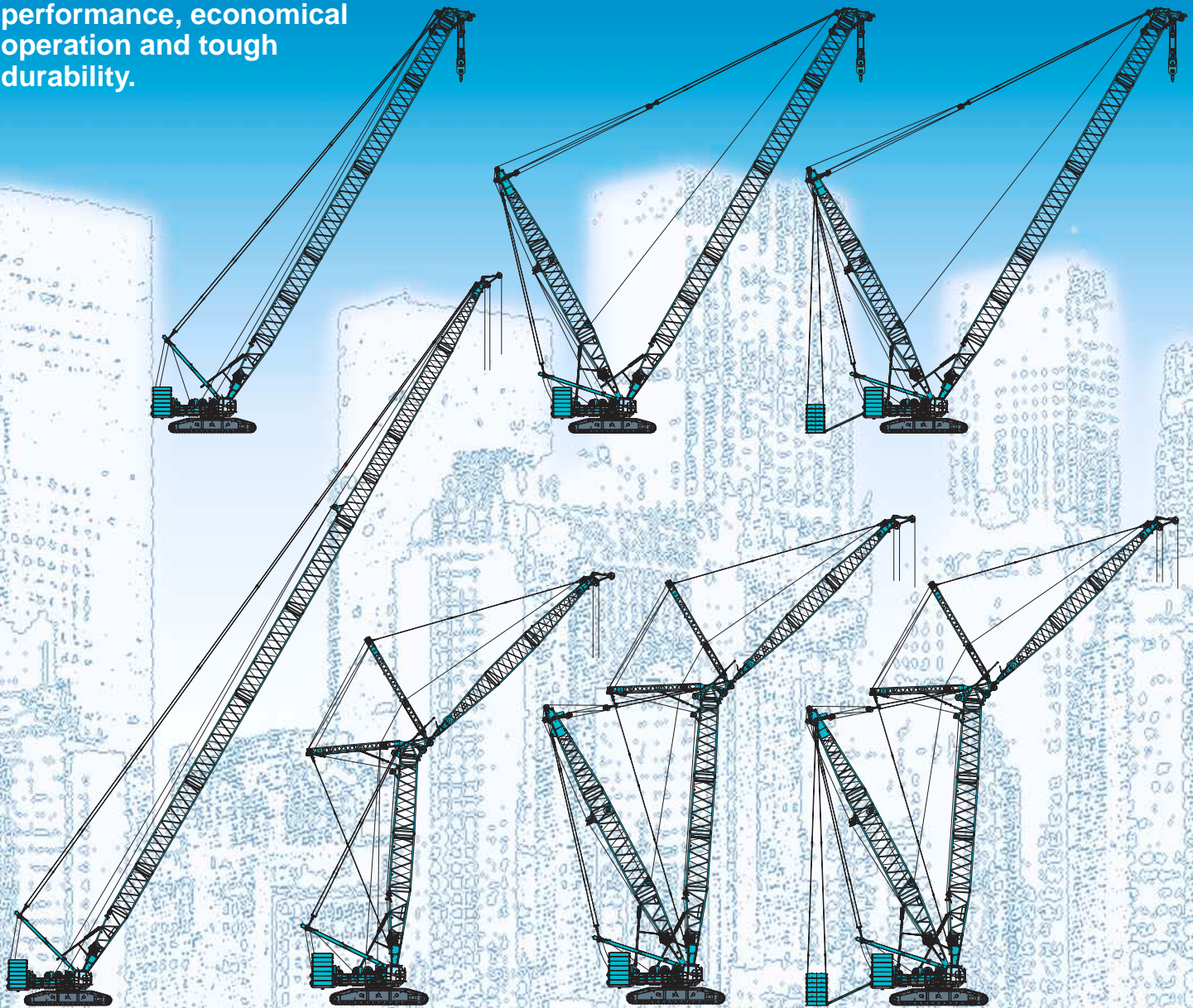


Photos in this catalog may include optional items.



# KOBELCO's awesome new expression of power, speed and efficiency.

5The CKE4000 crawler crane from KOBELCO takes advantage of new technologies to raise performance to new heights. New winches with more powerful line-pull are designed to handle the toughest jobs. Large drum capacities promote ultra-smooth operation and enhanced component service life. KOBELCO's engineering didn't stop with the CKE4000's superior performance. We designed this crane for complete self-assembly and disassembly. It is as efficient to transport as it is powerful to operate. All of this and more makes it the premier crane in its class. Add these new features to the renowned power and reliability of KOBELCO cranes, and you have the ideal combination of heavy-duty performance, economical operation and tough durability.





## PERFORMANCE

### Extremely Powerful Winches

The CK4000's powerful winches boast a rated single line pull of 13.5 tf, reducing the number of parts of line involved and improving hoisting speed. The result realizes dynamic lifting capacities and continuous trouble-free operations.

### Large Capacity Drums

Our wider, large capacity load hoist drums have a large, single-layer capacity which decreases the chances of uneven winding and increases the useful life of your wire rope.

### Outstanding lifting Capacities

Lifting capacities achieve 350 ton x 6 m with standard configuration. More than enough power for lifting girders or building power plants.

## CONTROLS & CAB

### Roomy, Comfortable Cab



### Precise Operation with Responsive Control



Full-hydraulic technology delivers quick, efficient operation with excellent precision. Pilot

pressure-assisted control allows you to control the speed and power of each function in proportion to lever movement.

### Inching Control Switch

The red switch on the boom lever grip allows easy inching control for hoist, boom hoist, and travel that the operator can activate without taking his hands off the boom hoist lever.



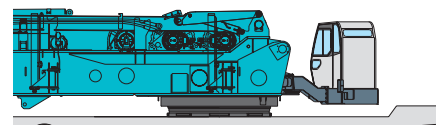
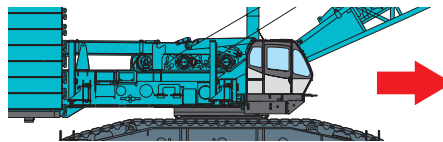
### Drum Speed Controller

Drum speed controller (for main and auxiliary hoist, boom hoist, and raising and lowering the luffing tower jib) makes it easier to move loads horizontally.

## TRANSPORTATION

### Swing Cab

The cab can be easily turned by hand toward the front of the machine during transport so that the upper machinery fits within a width of 3.0m. This enables the machine with axles to be transported on a trailer.



### Hitch on-type crawler assembly

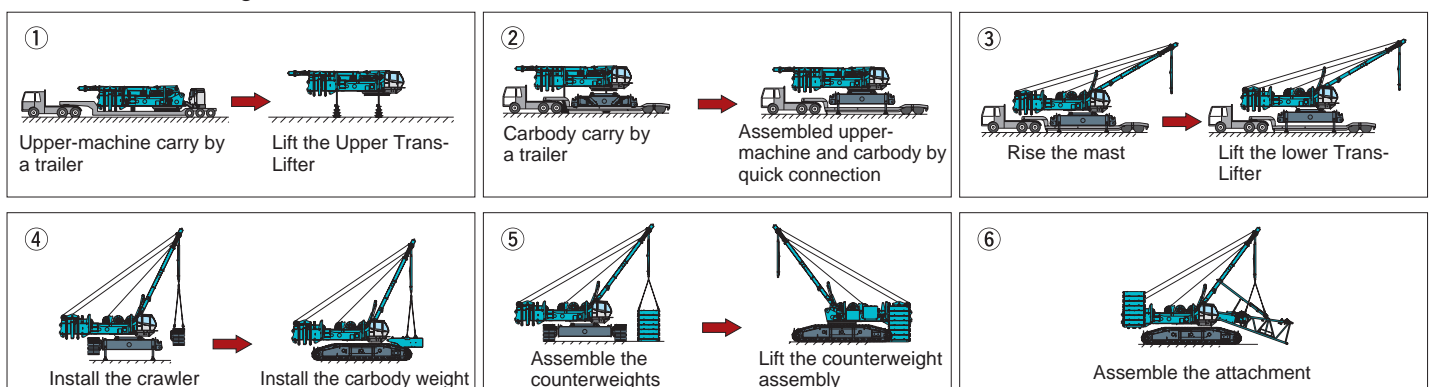
Use of hitch on-type crawler frame assembly saves considerable time and manpower.

### Self-Erection System

Use the built-in, remote controlled Translifter (jack system) to lift the CK4000 clear trailer, then drive the trailer away. Hydraulic cylinders raise the mast to their working position. The self-assembling cylinder (opt.) is used lift and attach the front and rear carbody counterweights, the crawler side frame and the boom. The rear counterweight assembly is raised into position by the gantry.



### Crane Assembly



## SAFETY

### Load Moment Indicator System



With the Load Moment Indicator System installed, the current load status can be checked at a glance, from an easy-to-read LCD screen display. In the overload condition it automatically stops crane operations.

### Function Lock Lever



Function lock lever prevents accidental operation when the operator enters or leaves the cab.

### Key-Controlled Release Switches



Safety enhancing mechanisms can be engaged or cancelled for specific operational needs by using this key. This key can be kept by safety officer to prevent any human-error.

## SIMPLIFIED MAINTENANCE

### Multi-Display



The easy-to-read LCD multi-display provides current status information on such functions as engine rpm, maintenance and on-board trouble-shooting, providing the operator with an ongoing real-time assessment of the machine's conditions at a glance.

### Easy Maintenance

Convenient filling of fuel tank and hydraulic oil tank from the side of the machine. Wide, stable catwalk provides easy access for daily maintenance.



## STANDARD EQUIPMENT

### Main Machine

- Air conditioner

### Safety Device

- Drum safety pawl • Boom backstops
- Boom over hoist auto-stop device
- Hook over hoist auto-stop device
- Swing lock pin • Signal horn
- Cab top guard
- Fire extinguisher

### Others

- Electric fuel pump • Tool kits
- Operator's manual

## OPTIONAL EQUIPMENT

### Main Machine

- Free-fall function for main and aux. winch
- Hydraulic tagline
- Reeving winch
- Foot throttle
- One way call
- Drum rotation indicators (front and rear drum)
- Service platform for machine room
- Obstacle light

### Transportation

- Counterweight self-removal
- Trans-Lifter • Crawler self-removal
- Base boom self-removal

### Attachment

- Insert boom
- Hook
- Auxiliary sheave
- Fixed jib
- Luffing jib
- Boom nesting device
- Storing guide rollers for boom nesting



Note: This catalog may contain photographs of machines with specifications, attachments and optional equipment not certified for operation in your country. Please consult KOBELCO for those items you may require. Due to our policy of continual product improvements all designs and specifications are subject to change without advance notice.

Copyright by KOBELCO CRANES CO., LTD. No part of this catalog may be reproduced in any manner without notice.



## KOBELCO CRANES CO., LTD.

17-1, Higashigotanda 2-chome, Shinagawa-ku, Tokyo, 141-8626 JAPAN  
Tel: ++81 (0) 3-5789-2130 Fax: ++81 (0) 3-5789-3372

Inquiries To: