

# Hydraulic Crawler Crane

# CKS

# 900

Model : CKS900

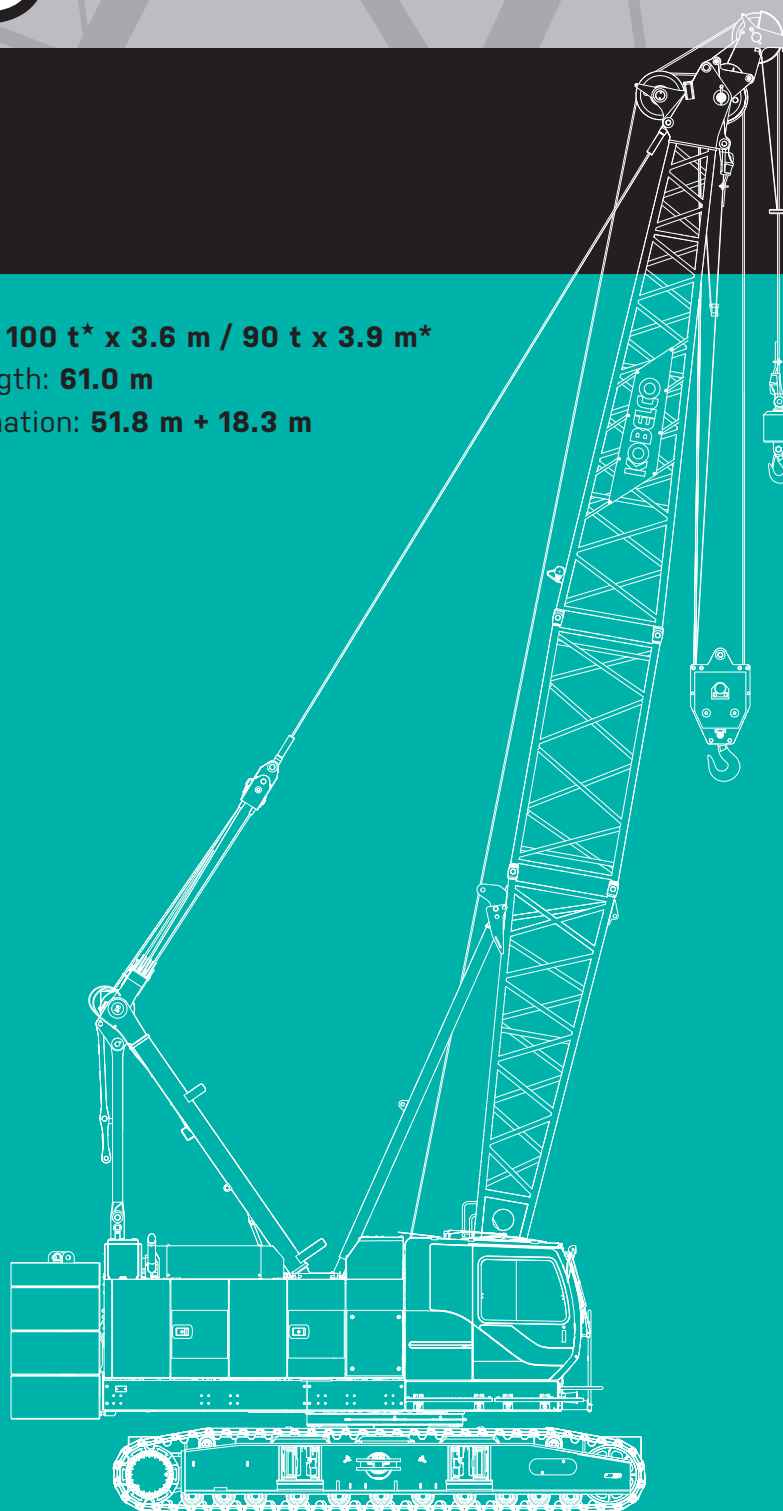
Max. Lifting Capacity: **100 t\*** x 3.6 m / **90 t** x 3.9 m\*

Max. Crane Boom Length: **61.0 m**

Max. Fixed Jib Combination: **51.8 m + 18.3 m**

\* The value are theoretical result.

\* Auxiliary sheave is necessary.



# KOBELCO



# **CKS900 CONTENTS**

**3 SPECIFICATIONS**

**5 GENERAL DIMENSIONS**

**6 BOOM AND JIB ARRANGEMENTS**

**7 WORKING RANGES**

**10 SUPPLEMENTAL DATA**

**11 LIFTING CAPACITIES**

**16 SUPPLEMENTAL DATA FOR CLAMSHELL**

**17 LIFTING CAPACITIES**

**18 SUPPLEMENTAL DATA FOR REDUCED WEIGHTS**

**19 LIFTING CAPACITIES**

**20 SUPPLEMENTAL DATA FOR BARGE**

**21 LIFTING CAPACITIES**

**22 TRANSPORTATION PLAN**

**25 PARTS AND ATTACHMENTS**

# SPECIFICATIONS



## Power Plant

**Model:** HINO J08E-VM  
**Type:** 4 cycle, water-cooled, vertical in-line 6, direct injection, turbo-charger, intercooler  
Exhaust level is equivalent with NRMM (Europe) Stage III A and/or US EPA Tier3.  
**Displacement:** 7.684 L  
**Rated power:** 213 kW/2,100 min<sup>-1</sup>  
**Max. Torque:** 1,017 N·m/1,600 min<sup>-1</sup>  
**Cooling System:** Water-cooled  
**Starter:** 24V-5kW  
**Radiator:** Corrugated type core, thermostatically controlled  
**Air cleaner:** Dry type with replaceable paper element  
**Throttle:** Twist grip type hand throttle, electrically actuated  
**Fuel filter:** Replaceable paper element  
**Batteries:** Two 12V x 136 Ah/5HR capacity batteries, series connected  
**Fuel tank capacity:** 400 L



## Hydraulic System

**Main pumps:** 3 variable displacement piston pumps  
**Control:** Full-flow hydraulic control system for infinitely variable pressure to all winches, propel and swing. Controls respond instantly to the touch, delivering smooth function operation.  
**Cooling:** Oil-to-air heat exchanger (plate-fin type)  
**Filtration:** Full-flow and bypass type with replaceable element  
**Max. relief valve pressure:**  
**Load hoist, boom hoist and propel system:** 31.9 MPa  
**Swing system:** 27.5 MPa  
**Control system:** 5.4 MPa  
**Oil Quantity (at the reference level):** 375 L



## Boom Hoisting System

Powered by a hydraulic motor through a planetary reducer.  
**Brake:** A spring-set, hydraulically released multiple-disc brake is mounted on the boom hoist motor and operated through a counter-balance valve.  
**Drum Lock:** External ratchet for locking drum  
**Drum:** Single drum, grooved for 16 mm dia. wire rope  
**Line Speed:** Single line on first drum layer  
**Hoisting/Lowering:** 70 to 2 m/min  
**Boom hoisting/lowering:** 16 mm x 150 m  
**Boom guy line:** 30 mm  
**Boom backstops:** Required for all boom length



## Load Hoisting System

Front and rear drums for load hoist powered by a hydraulic variable plunger motors, driven through planetary reducers.

**Negative Brake:** A spring-set, hydraulically released multiple-disc brake is mounted on the hoist motor and operated through a counter-balance valve. (Positive free fall brake is optional)

**Drum Lock:** External ratchet for locking drum

**Drums:**

**Front Drums:**

614 mm P.C.D x 617 mm wide drum, grooved for 26 mm wire rope. Rope capacity is 240 m working length and 360 m storage length.

**Rear Drum:** 614 mm P.C.D x 617 mm, grooved for 26 mm wire rope. Rope capacity is 165 m working length and 360 m storage length.

**Diameter of wire rope**

**Main winch:** 26 mm x 240 m

**Aux. winch:** 26 mm x 165 m

**Third winch:** 22 mm x 145 m

**Line Speed\*:**

**Hoisting/lowering:** 120 to 3 m/min

**Line Pull:**

**Max. Line Pull\*:** 208 kN {21.2 tf}

(Referential performance)

**Rated Line Pull:** 112 kN {11.4 tf}

\*Single line on first drum layer



## Swing System

Swing unit is powered by hydraulic motor driving spur gears through planetary reducer, the swing system provides 360° rotation.

**Swing parking brakes:** A spring-set, hydraulically released multiple-disc brake is mounted on swing motor.

**Swing circle:** Single-row ball bearing with an integral internally cut swing gear.

**Swing lock:** Manually, four position lock for transportation

**Swing Speed:** 4.0 min<sup>-1</sup>



## Upper Structure

Torsion-free precision machined upper frame. All components are located clearly and service friendly. Engine will with low noise level.

**Counterweight:** 31.9 ton



## Cab & Control

Totally enclosed, full vision cab with safety glass, fully adjustable, high backed seat with a headrest and armrests, and intermittent wiper and window washer (skylight and front window).

### Cab fittings:

Air conditioner, convenient compartment (for tool), cup holder, cigarette lighter, sun visor, roof blind, tinted glass, floor mat, footrest, and shoe tray



## Lower Structure

Steel-welded carbody with axles. Crawler assemblies can be hydraulically extended for wide-track operation or retracted for transportation. Crawler belt tension is maintained by hydraulic jack force on the track-adjusting bearing block.

**Carbody weight:** 14.4 ton

**Crawler drive:** Independent hydraulic propel drive is built into each crawler side frame. Each drive consists of a hydraulic motor propelling a driving tumbler through a planetary gear box. Hydraulic motor and gear box are built into the crawler side frame within the shoe width.

**Crawler brakes:** Spring-set, hydraulically released parking brakes are built into each propel drive.

**Steering mechanism:** A hydraulic propel system provides both skid steering (driving one track only) and counter-rotating steering (driving each track in opposite directions).

**Track rollers:** Sealed track rollers for maintenance-free operation.

**Shoe (flat):** 800 mm wide each crawler

**Max. gradeability:** 40%



## Weight

Including upper and lower machine, 31.9 ton counterweight and 14.4 ton carbody weight, basic boom (or basic boom + basic jib), hook, and other accessories.

Weight: 90.1 ton

Ground pressure: 101 kPa



## Attachment

### Boom & Jib:

Welded lattice construction using tubular, high-tensile steel chords with pin connection between sections.

### Boom and Jib length

	Min. Length (Min. combination)	Max. Length (Max. combination)
Crane Boom	12.2 m	61.0 m
Fixed Jib	24.4 m + 9.1 m	51.8 m + 18.3 m

## Main Specifications (Model: CKS900)

Crane Boom	
Max. Lifting Capacity	100 t * x 3.6 m / 90 t x 3.9 m *3
Max. Length	61.0 m
Fixed Jib	
Max. Lifting Capacity	10.9 t x 18.0 m
Max. Combination	51.8 m + 18.3 m
Main & Aux. Winch	
Max. Line Speed (1st layer)	120 m/min
Rated Line Pull (Single line)	112 kN {11.4 tf}
Wire Rope Diameter	26 mm
Wire Rope Length	240 m (Main), 165 m (Aux)
Brake Type (free fall)	Wet-type multiple disc brake (Optional)
Working Speed	
Swing Speed	4.0 min <sup>-1</sup> {rpm}
Travel Speed	1.7/1.1 km/h
Power Plant	
Model	HINO J08E-VM
Engine Output	213 kW/2100 min <sup>-1</sup>
Fuel Tank	400 L

Hydraulic System	
Main Pumps	3 variable displacement
Max. Pressure	31.9 MPa {325 kgf/cm <sup>2</sup> }
Oil Quantity (at the reference level)	375 L
Self-Removal Device	
	Counterweight/self-removal device (Option)
Weight	
Operating Weight	90.0 t *1
Ground Pressure	101.5 kPa
Counterweight	31,900 kg
Transport Weight	41,230 kg *2

Units are SI units. { } indicates conventional units.

Line speeds in table are for light loads. Line speed varies with load.

\*1 Including upper and lower machine, 31.9 ton counterweight, 14.4 ton carbody weight, basic boom, hook, and other accessories.

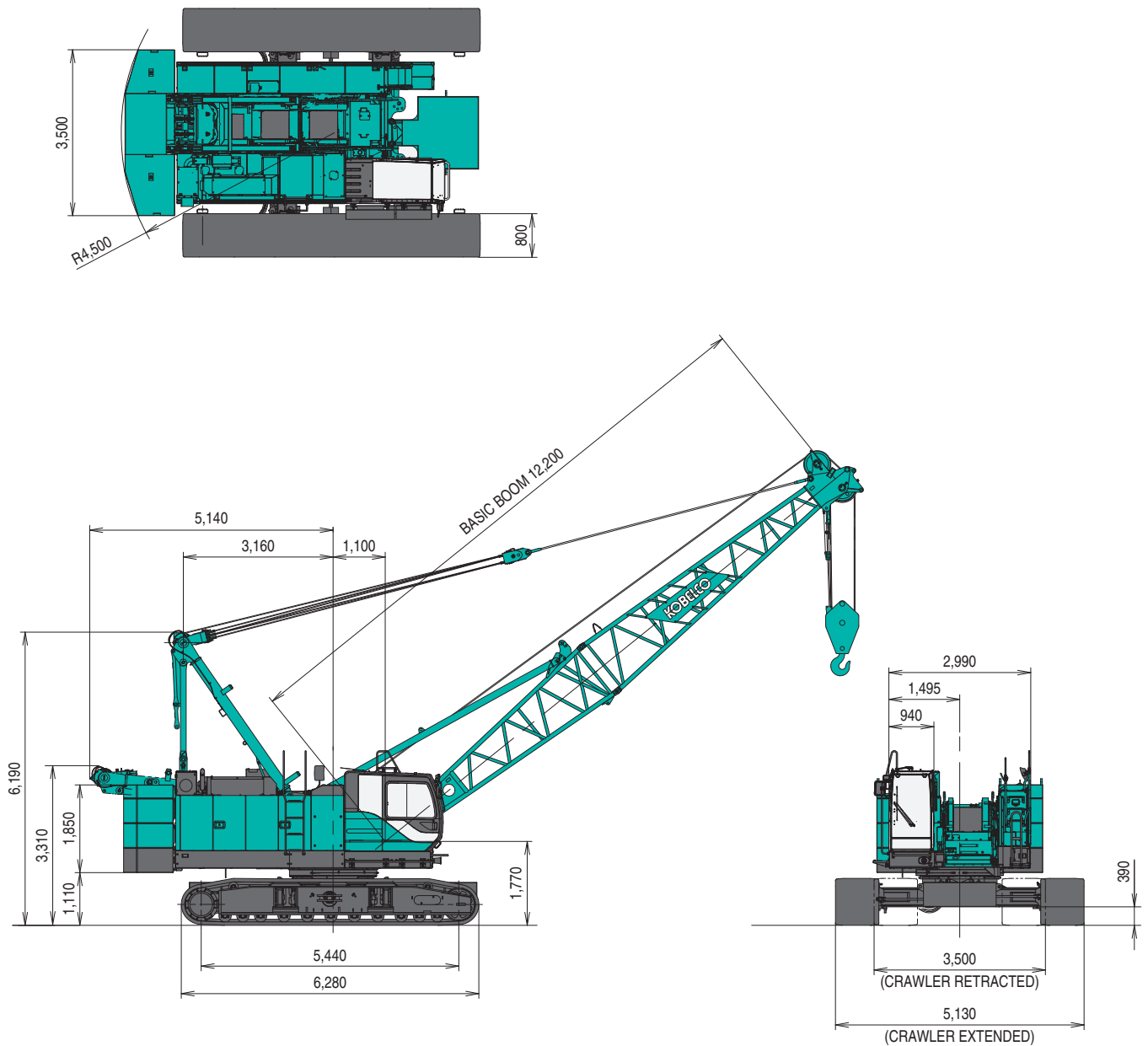
\*2 Base machine with boom base, gantry, crawlers, and wire ropes (front/boom hoist)

\*3 Auxiliary sheave is must.

\* The value are theoretical result.

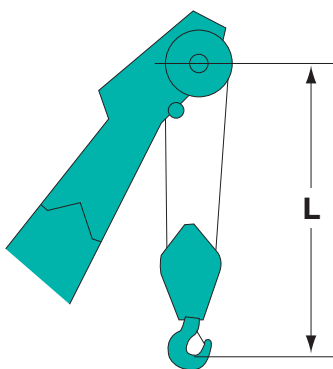
# GENERAL DIMENSIONS

(Unit: mm)

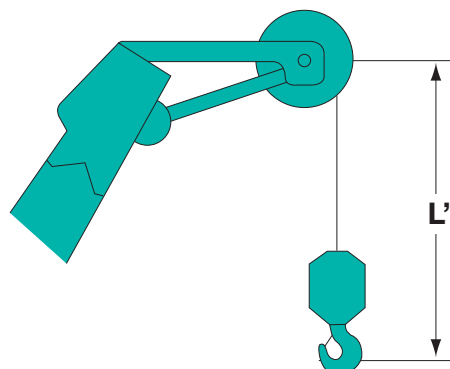


This catalog may contain photographs of machines with specifications, attachments and optional equipment.

## Limit of Hook Lifting



Hook	L
90 t hook	4.1 m
70 t hook	4.1 m
50 t hook	4.0 m
35 t hook	3.9 m



Hook	L'
Ball hook	3.5 m

# BOOM AND JIB ARRANGEMENTS

## Crane Boom Arrangements

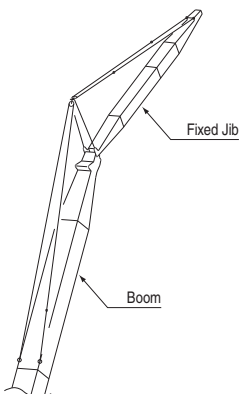
Boom length m (ft)	Boom arrangement
12.2 (40)	
15.2 (50)	
18.3 (60)	※
21.3 (70)	※
24.4 (80)	※
27.4 (90)	※
30.5 (100)	※
33.5 (110)	※
36.6 (120)	※
39.6 (130)	※

Boom length m (ft)	Boom arrangement
42.7 (140)	※
45.7 (150)	※
48.8 (160)	※
51.8 (170)	※
54.9 (180)	※
57.9 (190)	※
61.0 (200)	※

Symbol	Boom Length	Remarks
	5.8 m	Boom Base
	6.4 m	Boom Tip
	3.0 m	Insert Boom
	6.1 m	Insert Boom
	12.2 m	Insert Boom
	12.2 m	Insert Boom with lug

- △ Mark shows the boom insert with lugs attached
- ▲ Mark shows the boom insert with lugs attached and the guy line installing position when the fixed jib is used.
- ※ Mark shows the standard boom arrangement which make the boom arrangement of less than the each boom length possible.
- Mark shows the installing of the cable roller for the insert boom.

## Fixed Jib Arrangements

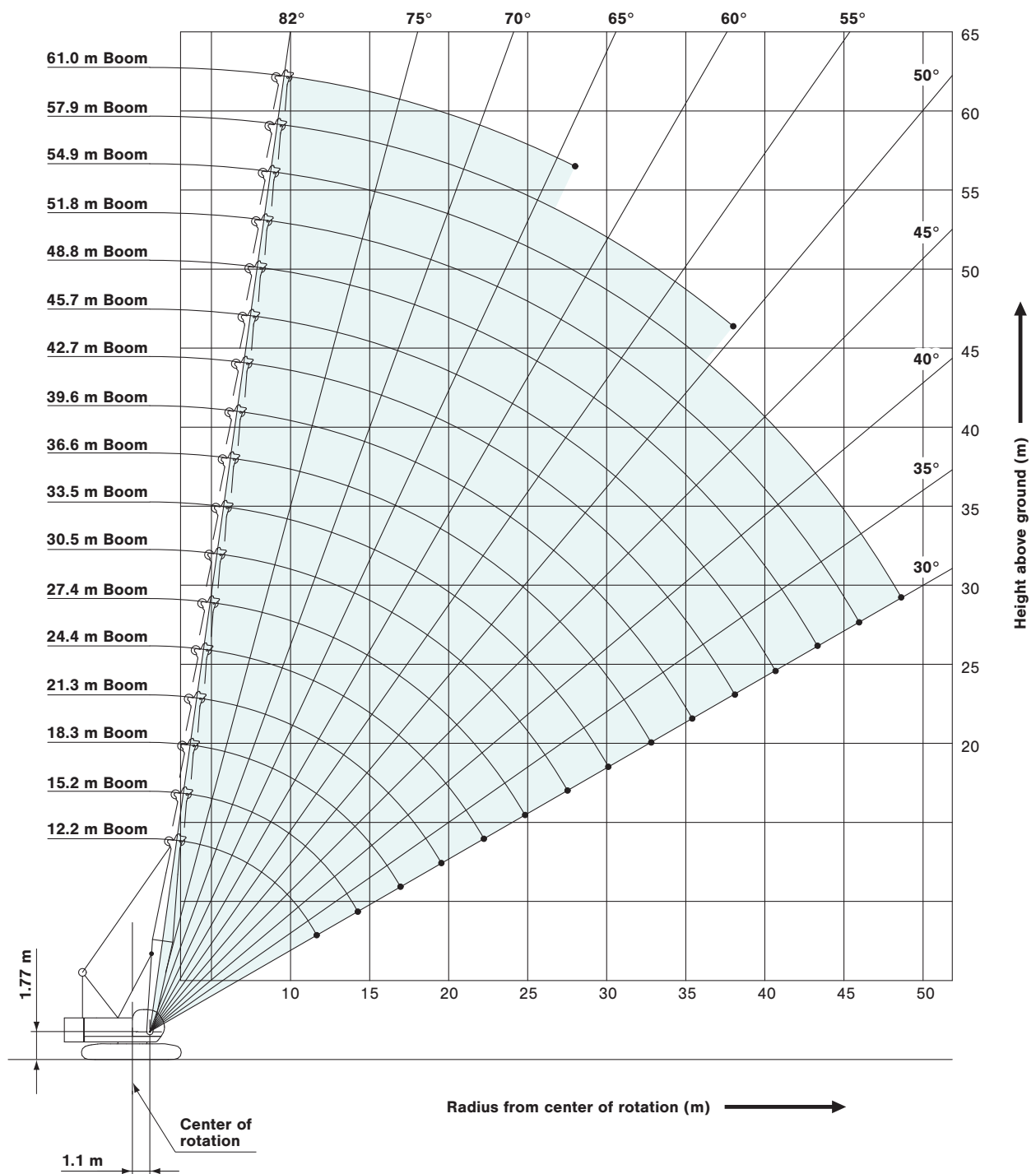


Crane boom length	Jib length m (ft)	Jib arrangement
24.4 m to 51.8 m	9.1 (30)	
	12.2 (40)	
	15.2 (50)	
	18.3 (60)	

Symbol	Jib Length	Remarks
	4.6 m	Jib Base
	4.6 m	Jib Tip
	3.0 m	Insert Jib
	6.1 m	Insert Jib

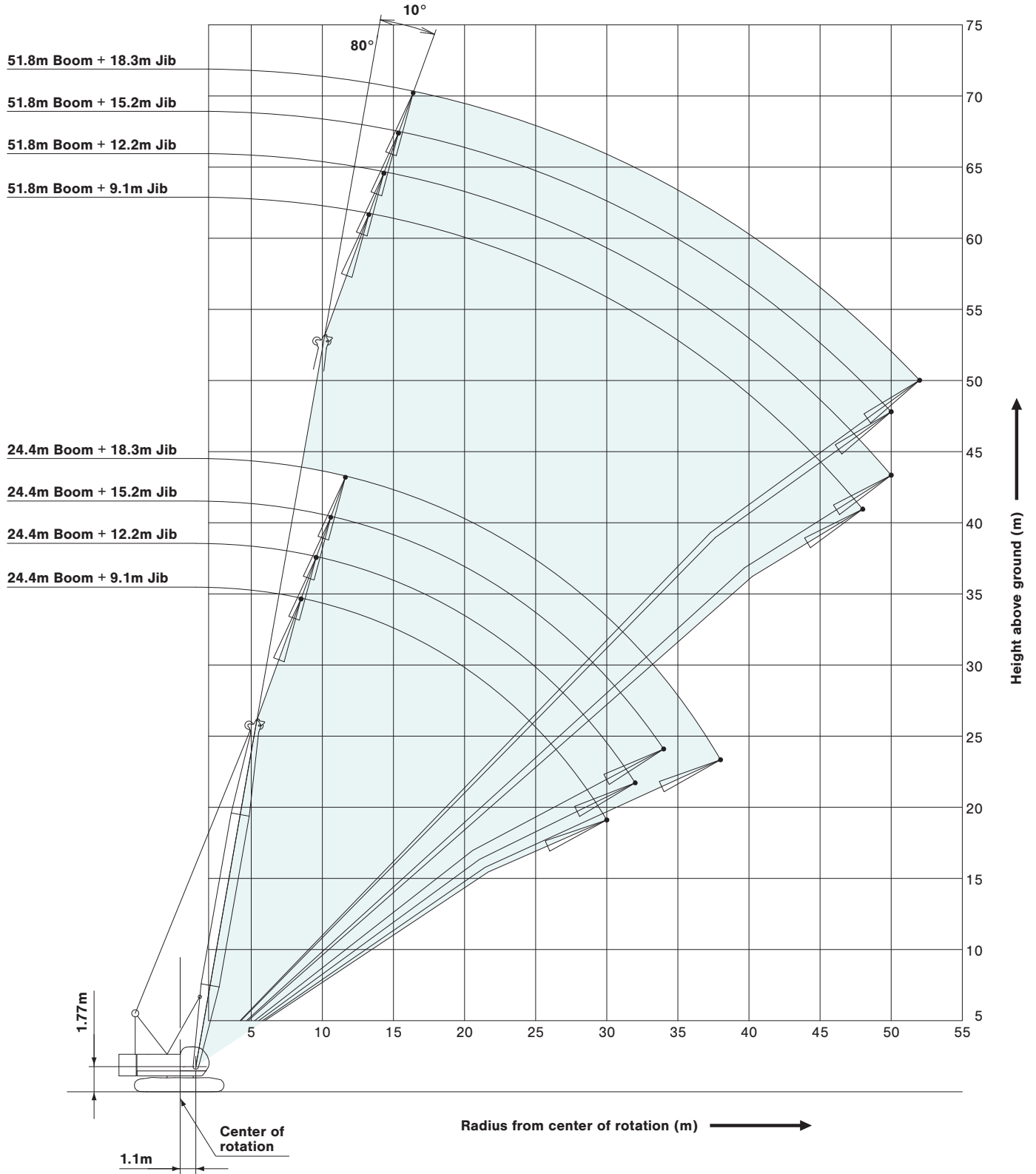
# WORKING RANGES

## Crane Boom



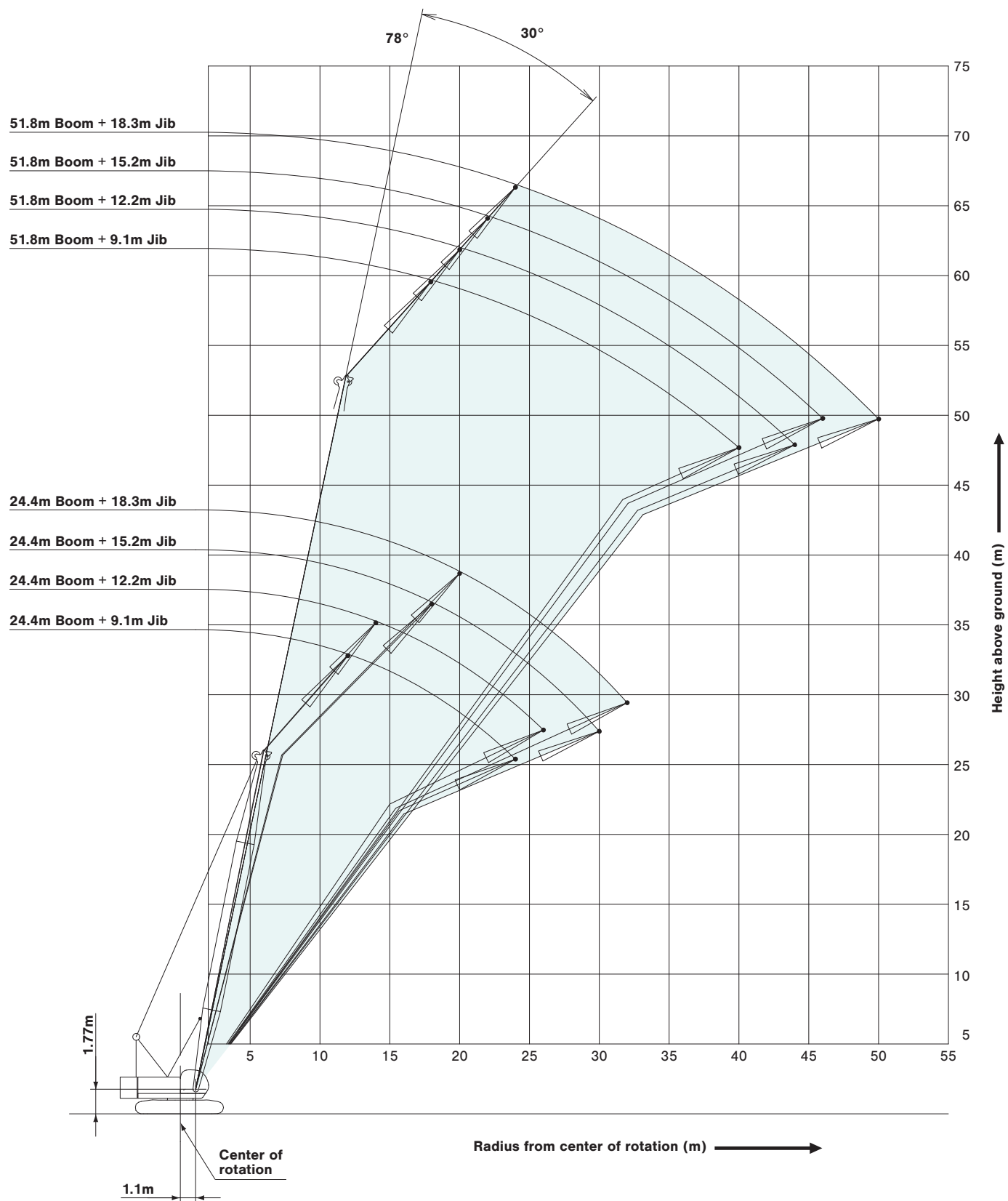


# Fixed Jib 10°



# WORKING RANGES

## Fixed Jib 30°



# SUPPLEMENTAL DATA

- Ratings according to EN13000.
- Operating radius is the horizontal distance from centerline of rotation to a vertical line through the center of gravity of the load.
- Deduct weight of hook block (s), slings and all other load handling accessories from main boom ratings shown.
- Ratings shown are based on freely suspended loads and make no allowance for such factors as wind effect on lifted load, ground conditions, out-of-level, operating speeds or any other condition that could be detrimental to the safe operation of this equipment.  
The operator, therefore, has the responsibility to judge the existing conditions and reduce lifted loads and operating speeds accordingly.
- Ratings are for operation on a firm and level surface, up to 1% gradient.
- At radii and boom lengths where no ratings are shown on chart, operation is not intended nor approved.
- Boom inserts and guy lines must be arranged as shown in the "operator's manual".
- Boom hoist reeving is 12 part line.
- Gantry must be in raised position for all conditions.
- Boom backstops are required for all boom lengths.
- The boom should be erected over the front of the crawlers, not laterally.
- Ratings inside of boxes  are limited by strength of materials.
- The minimum rated load is 1.4 (ton).
- Crawler frames must be fully extended for all crane operations.

## (Crane boom lifting)

- The total load that can be lifted is the value for weight of main hook block, slings, and all other load handling accessories deducted from crane boom ratings shown.

## (Fixed jib lifting)

- The total load that can be lifted is the value for weight of jib hook block, slings, and all other load handling accessories deducted from fixed jib ratings shown.
- The availability of fixed jib mounting
  - On crane boom : Range 24.4 m to 51.8 m.

## <Reference Information>

### Main hoist loads

No. of Parts of Line	1	2	3	4	5
Maximum Loads (kN)	112	224	335	447	559
Maximum Loads (t)	11.4	22.8	34.2	45.6	57.0

No. of Parts of Line	6	7	8
Maximum Loads (kN)	671	779	883
Maximum Loads (t)	68.4	79.4	90.0

### Auxiliary hoist loads

No. of Parts of Line	1
Maximum Loads (kN)	108
Maximum Loads (t)	11.0

Weight of hook block					
Hook Block	90 t	70 t	50 t	35 t	Ball Hook
Weight (t)	1.3	0.9	0.85	0.7	0.3

Operation of this equipment in excess of rated loads  
or disregard of instruction voids the warranty.

## Assembling the counterweight

31.9 ton counterweight  
14.4 ton carbody weight  
(Standard type)

No.4		No.5
No.3		
No.2		
No.1		

Counterweights

Carbody weights

## Assembling the counterweight

(Equipped with self removal device)  
31.3 ton counterweight  
14.4 ton carbody weight  
(Optional type)

No.4		No.5
No.2		No.3
No.1		

Counterweights

Carbody weights

- The lifting capacity does not change due to the type of counterweights (standard or optional).

# LIFTING CAPACITIES



## Crane Boom Lifting Capacities

Counterweight: 31.9 t  
Carbody Weight: 14.4 t

Unit: metric ton

Working radius (m) \ Boom length (m)	12.2	15.2	18.3	21.3	24.4	27.4	30.5	33.5	36.6	39.6	Boom length (m) \ Working radius (m)
3.6	100.0*										3.6
3.9	90.0	89.9	89.7								3.9
4.0	89.0	88.9	88.7	4.3m/68.4							4.0
4.5	79.6	79.5	79.4	68.4	4.7m/68.4						4.5
5.0	72.1	71.9	71.8	68.4	67.6	5.1m/57.0					5.0
5.5	65.8	65.7	65.5	63.6	60.6	57.0	5.6m/54.0				5.5
6.0	60.5	60.3	59.9	57.5	54.9	52.7	50.5	45.6	6.4m/41.9	6.8m/34.2	6.0
7.0	48.6	48.5	48.4	48.1	46.2	44.5	42.9	41.5	40.0	34.2	7.0
8.0	39.9	39.8	39.7	39.9	39.8	38.5	37.2	36.1	35.0	33.9	8.0
9.0	33.8	33.7	33.6	33.8	33.6	33.6	32.8	31.9	31.0	30.1	9.0
10.0	29.3	29.2	29.1	29.2	29.1	29.0	28.9	28.5	27.7	27.0	10.0
12.0	11.8m/22.9	22.9	22.8	22.9	22.8	22.7	22.6	22.6	22.5	22.3	12.0
14.0		18.8	18.6	18.8	18.6	18.5	18.4	18.4	18.3	18.3	14.0
16.0		14.4m/18.1	15.7	15.8	15.7	15.6	15.5	15.4	15.3	15.3	16.0
18.0			17.0m/14.5	13.7	13.5	13.4	13.3	13.2	13.1	13.1	18.0
20.0				19.6m/12.2	11.8	11.7	11.6	11.5	11.4	11.4	20.0
22.0					10.5	10.4	10.2	10.2	10.0	10.0	22.0
24.0					22.3m/10.3	9.3	9.1	9.1	8.9	8.9	24.0
26.0						24.9m/8.8	8.2	8.2	8.0	8.0	26.0
28.0							27.6m/7.6	7.4	7.2	7.2	28.0
30.0								6.8	6.6	6.5	30.0
32.0								30.2m/6.7	6.0	6.0	32.0
34.0									32.9m/5.8	5.5	34.0
36.0										35.5m/5.1	36.0
Reeves	8	8	8	6	6	5	5	4	4	4	Reeves

Working radius (m) \ Boom length (m)	42.7	45.7	48.8	51.8	54.9	57.9	61.0	Boom length (m) \ Working radius (m)
7.0	7.3m/31.9	7.7m/28.0						7.0
8.0	31.4	27.8	8.1m/22.1	8.5m/19.2				8.0
9.0	29.2	26.2	20.8	18.6	16.2	9.4m/13.9	9.8m/11.8	9.0
10.0	26.2	24.5	19.5	17.4	15.2	13.4	11.7	10.0
12.0	21.7	21.2	17.3	15.4	13.3	11.7	10.2	12.0
14.0	18.1	18.0	15.5	13.8	11.9	10.4	9.0	14.0
16.0	15.2	15.1	14.1	12.4	10.7	9.3	8.0	16.0
18.0	12.9	12.9	12.8	11.4	9.7	8.4	7.2	18.0
20.0	11.2	11.2	11.1	10.4	8.9	7.6	6.5	20.0
22.0	9.9	9.8	9.8	9.6	8.1	7.0	5.9	22.0
24.0	8.7	8.7	8.6	8.5	7.5	6.4	5.4	24.0
26.0	7.8	7.7	7.7	7.6	6.9	5.9	4.9	26.0
28.0	7.0	7.0	6.9	6.8	6.4	5.4	4.5	28.0
30.0	6.4	6.3	6.3	6.1	6.0	5.0	4.1	30.0
32.0	5.8	5.7	5.7	5.6	5.4	4.6	3.8	32.0
34.0	5.3	5.2	5.1	5.0	4.9	4.3	3.4	34.0
36.0	4.8	4.8	4.7	4.6	4.4	4.0	3.2	36.0
38.0	4.4	4.4	4.2	4.1	4.0	3.6	2.9	38.0
40.0	38.1m/4.4	4.0	3.9	3.8	3.6	3.3	2.6	40.0
44.0		40.8m/3.9	43.4m/3.3	3.1	3.0	2.8	2.1	44.0
48.0				46.1m/2.8	2.5	2.2	1.7	48.0
52.0					48.7m/2.4	51.4m/1.8		52.0
Reeves	4	4	2	2	2	2	2	Reeves

Note:

Ratings according to EN13000.

Ratings shown in   are determined by the strength of the boom or other structural components.

Lifting capacities may vary depending on hook used or with/without auxiliary sheave.

Please refer rated chart in operator's cabin.

\* The value are theoretical result.



# Fixed Jib Lifting Capacities (Without Main Hook Block) (Jib Offset Angle : 10°)

Counterweight: 31.9 t  
Carbody Weight: 14.4 t

Unit: metric ton

Boom length (m)		24.4				27.4				30.5				Boom length (m)	
Jib length (m)		9.1	12.2	15.2	18.3	9.1	12.2	15.2	18.3	9.1	12.2	15.2	18.3	Jib length (m)	
Working radius (m)	9.0	10.9													9.0
	10.0	10.9				10.9				10.9					10.0
	12.0	10.9	10.9	9.0		10.9	10.9	9.0		10.9	10.9				12.0
	14.0	10.9	10.9	9.0	8.1	10.9	10.9	9.0	8.1	10.9	10.9	9.0	8.1		14.0
	16.0	10.9	10.5	8.7	7.7	10.9	10.9	9.0	7.9	10.9	10.9	9.0	8.1		16.0
	18.0	10.9	9.5	7.8	6.8	10.9	10.2	8.3	7.2	10.9	10.6	8.7	7.5		18.0
	20.0	10.3	8.6	7.1	6.2	10.2	9.2	7.5	6.5	10.1	9.7	7.9	6.8		20.0
	22.0	9.0	7.8	6.5	5.6	8.9	8.4	6.9	5.9	8.8	8.9	7.2	6.2		22.0
	24.0	8.0	7.2	5.9	5.1	7.9	7.7	6.3	5.4	7.8	8.0	6.6	5.7		24.0
	26.0	7.2	6.7	5.5	4.7	7.1	7.1	5.8	5.0	7.0	7.1	6.2	5.3		26.0
	28.0	6.5	6.2	5.1	4.4	6.4	6.5	5.4	4.6	6.3	6.4	5.7	4.9		28.0
	30.0	5.9	5.8	4.8	4.1	5.8	5.9	5.1	4.3	5.7	5.8	5.4	4.6		30.0
	32.0		5.5	4.5	3.8	5.3	5.4	4.8	4.1	5.2	5.3	5.1	4.3		32.0
	34.0			4.2	3.6		4.9	4.5	3.8	4.7	4.8	4.8	4.0		34.0
	36.0				3.4			4.3	3.6		4.4	4.5	3.8		36.0
	38.0				3.2			4.1	3.4		4.0	4.1	3.6		38.0
	40.0								3.2			3.8	3.4		40.0
42.0												3.3		42.0	
44.0												3.1		44.0	
Reeves	1	1	1	1	1	1	1	1	1	1	1	1	1	Reeves	

Boom length (m)		33.5				36.6				39.6				Boom length (m)	
Jib length (m)		9.1	12.2	15.2	18.3	9.1	12.2	15.2	18.3	9.1	12.2	15.2	18.3	Jib length (m)	
Working radius (m)	12.0	10.9	10.9			10.9				10.9					12.0
	14.0	10.9	10.9	9.0	8.1	10.9	10.9	9.0		10.9	10.9	9.0			14.0
	16.0	10.9	10.9	9.0	8.1	10.9	10.9	9.0	8.1	10.9	10.9	9.0	8.1		16.0
	18.0	10.9	10.9	9.0	7.8	10.9	10.9	9.0	8.1	10.9	10.9	9.0	8.1		18.0
	20.0	10.0	10.1	8.3	7.1	9.9	10.0	8.6	7.4	9.8	9.9	9.0	7.7		20.0
	22.0	8.7	8.8	7.6	6.5	8.6	8.7	8.0	6.8	8.5	8.6	8.2	7.0		22.0
	24.0	7.8	7.8	7.0	6.0	7.5	7.7	7.3	6.2	7.4	7.6	7.7	6.5		24.0
	26.0	7.0	7.0	6.5	5.5	6.7	6.9	6.8	5.8	6.6	6.8	6.9	6.0		26.0
	28.0	6.2	6.3	6.0	5.1	6.1	6.2	6.2	5.4	6.0	6.1	6.1	5.6		28.0
	30.0	5.6	5.7	5.6	4.8	5.5	5.5	5.7	5.0	5.4	5.4	5.6	5.2		30.0
	32.0	5.1	5.2	5.2	4.5	5.0	5.0	5.1	4.7	4.8	4.9	5.0	4.9		32.0
	34.0	4.7	4.7	4.8	4.2	4.5	4.6	4.7	4.4	4.4	4.5	4.5	4.6		34.0
	36.0	4.2	4.3	4.4	4.0	4.1	4.2	4.2	4.2	4.0	4.1	4.1	4.2		36.0
	38.0	3.9	4.0	4.0	3.8	3.8	3.8	3.9	3.9	3.7	3.7	3.8	3.8		38.0
	40.0		3.7	3.7	3.6	3.4	3.5	3.6	3.6	3.3	3.4	3.4	3.5		40.0
	42.0			3.4	3.4		3.2	3.3	3.3	3.0	3.1	3.2	3.2		42.0
	44.0				3.2			3.0	3.1		2.7	2.9	2.9		44.0
46.0								2.8			2.6	2.7		46.0	
48.0								2.4			2.2	2.4		48.0	
50.0												2.1		50.0	
Reeves	1	1	1	1	1	1	1	1	1	1	1	1	1	Reeves	

Note:

Ratings according to EN13000.

Ratings shown in   are determined by the strength of the boom or other structural components.

Lifting capacities may vary depending on hook used or with/without auxiliary sheave.

Please refer rated chart in operator's cabin.

# LIFTING CAPACITIES



## Fixed Jib Lifting Capacities (Without Main Hook Block) (Jib Offset Angle : 10°)

Counterweight: 31.9 t  
Carbody Weight: 14.4 t

Unit: metric ton

Boom length (m)		42.7				45.7				48.8				Boom length (m)	
Jib length (m)		9.1	12.2	15.2	18.3	9.1	12.2	15.2	18.3	9.1	12.2	15.2	18.3	Jib length (m)	
Working radius (m)	14.0	10.9	10.9			10.9	10.9			10.9				14.0	Working radius (m)
	16.0	10.9	10.9	9.0		10.9	10.9	9.0		10.9	10.9			16.0	
	18.0	10.9	10.9	9.0	8.1	10.8	10.9	9.0	8.1	10.8	10.9	9.0	8.1	18.0	
	20.0	9.6	9.8	9.0	7.9	9.5	9.6	9.0	8.1	9.5	9.6	9.0	8.1	20.0	
	22.0	8.4	8.5	8.5	7.3	8.3	8.4	8.5	7.6	8.2	8.4	8.5	7.8	22.0	
	24.0	7.3	7.5	7.6	6.7	7.2	7.4	7.5	7.0	7.2	7.3	7.4	7.2	24.0	
	26.0	6.5	6.7	6.7	6.3	6.4	6.5	6.7	6.5	6.3	6.5	6.6	6.7	26.0	
	28.0	5.8	5.9	6.0	5.8	5.7	5.8	5.9	6.0	5.7	5.8	5.9	5.9	28.0	
	30.0	5.2	5.3	5.4	5.4	5.1	5.2	5.3	5.4	5.1	5.2	5.2	5.3	30.0	
	32.0	4.7	4.8	4.9	4.9	4.6	4.7	4.8	4.8	4.6	4.6	4.7	4.8	32.0	
	34.0	4.3	4.3	4.4	4.5	4.2	4.2	4.3	4.4	4.1	4.2	4.3	4.3	34.0	
	36.0	3.8	3.9	4.0	4.0	3.7	3.8	3.9	3.9	3.7	3.8	3.8	3.9	36.0	
	38.0	3.5	3.6	3.6	3.7	3.5	3.5	3.5	3.6	3.4	3.4	3.5	3.5	38.0	
	40.0	3.2	3.3	3.3	3.3	3.1	3.2	3.2	3.3	3.0	3.1	3.2	3.2	40.0	
	42.0	2.9	3.0	3.0	3.1	2.8	2.9	2.9	3.0	2.8	2.8	2.9	2.9	42.0	
	44.0	2.5	2.7	2.8	2.8	2.5	2.6	2.7	2.7	2.5	2.5	2.6	2.6	44.0	
	46.0	2.2	2.3	2.5	2.6	2.2	2.3	2.4	2.5	2.2	2.2	2.4	2.4	46.0	
48.0		2.0	2.2	2.3	1.8	2.0	2.1	2.2	1.8	1.9	2.1	2.1	48.0		
50.0			1.9	2.0		1.7	1.8	1.9	1.4	1.6	1.8	1.9	50.0		
52.0				1.7			1.6	1.7			1.5	1.6	52.0		
Reeves		1	1	1	1	1	1	1	1	1	1	1	1	Reeves	

Boom length (m)		51.8			
Jib length (m)		9.1	12.2	15.2	18.3
Working radius (m)	14.0	10.9			
	16.0	10.9	10.9		
	18.0	10.7	10.8	9.0	8.1
	20.0	9.4	9.5	9.0	8.1
	22.0	8.1	8.3	8.3	8.0
	24.0	7.1	7.2	7.3	7.4
	26.0	6.2	6.4	6.5	6.6
	28.0	5.6	5.7	5.8	5.8
	30.0	5.0	5.1	5.1	5.2
	32.0	4.4	4.5	4.6	4.7
	34.0	4.0	4.1	4.2	4.2
	36.0	3.6	3.6	3.7	3.8
	38.0	3.3	3.3	3.4	3.4
	40.0	2.9	3.0	3.0	3.1
	42.0	2.7	2.7	2.8	2.8
	44.0	2.3	2.4	2.5	2.5
	46.0	2.1	2.1	2.2	2.3
48.0	1.7	1.8	1.9	2.0	
50.0		1.5	1.6	1.7	
52.0				1.5	
Reeves		1	1	1	1

Note:

Ratings according to EN13000.

Ratings shown in   are determined by the strength of the boom or other structural components.

Lifting capacities may vary depending on hook used or with/without auxiliary sheave.

Please refer rated chart in operator's cabin.



# Fixed Jib Lifting Capacities (Without Main Hook Block) (Jib Offset Angle : 30°)

Counterweight: 31.9 t  
Carbody Weight: 14.4 t

Unit: metric ton

Boom length (m)		24.4				27.4				30.5				Boom length (m)	
Jib length (m)		9.1	12.2	15.2	18.3	9.1	12.2	15.2	18.3	9.1	12.2	15.2	18.3	Jib length (m)	
Working radius (m)	12.0	9.5													12.0
	14.0	9.3	6.9			9.4				9.5					14.0
	16.0	8.6	6.4			8.9	6.5			9.0	6.7				16.0
	18.0	8.0	5.9	4.8		8.3	6.1	4.9		8.6	6.2	5.0			18.0
	20.0	7.5	5.6	4.5	3.8	7.8	5.7	4.6	3.9	8.0	5.9	4.7	3.9		20.0
	22.0	7.1	5.3	4.2	3.6	7.4	5.4	4.3	3.6	7.6	5.6	4.4	3.7		22.0
	24.0	6.8	5.0	4.0	3.4	7.0	5.1	4.1	3.4	7.3	5.3	4.2	3.5		24.0
	26.0		4.8	3.8	3.2		4.9	3.9	3.2	7.0	5.1	4.0	3.3		26.0
	28.0			3.6	3.0		4.7	3.7	3.0	6.4	4.9	3.8	3.1		28.0
	30.0			3.5	2.9			3.6	2.9		4.7	3.7	3.0		30.0
	32.0				2.8			3.5	2.8			3.6	2.9		32.0
	34.0								2.7						34.0
	36.0												2.7		36.0
Reeves		1	1	1	1	1	1	1	1	1	1	1	1	Reeves	

Boom length (m)		33.5				36.6				39.6				Boom length (m)	
Jib length (m)		9.1	12.2	15.2	18.3	9.1	12.2	15.2	18.3	9.1	12.2	15.2	18.3	Jib length (m)	
Working radius (m)	14.0	9.5				9.5									14.0
	16.0	9.3	6.8			9.4				9.5					16.0
	18.0	8.8	6.4			9.0	6.5			9.2	6.6				18.0
	20.0	8.3	6.1	4.8	4.0	8.5	6.2	4.9	4.1	8.8	6.3	4.9			20.0
	22.0	7.9	5.7	4.5	3.8	8.1	5.9	4.6	3.9	8.3	6.0	4.7	3.9		22.0
	24.0	7.5	5.5	4.3	3.6	7.7	5.6	4.4	3.7	7.7	5.7	4.5	3.7		24.0
	26.0	7.1	5.2	4.1	3.4	7.0	5.4	4.2	3.5	6.9	5.5	4.3	3.5		26.0
	28.0	6.4	5.0	3.9	3.2	6.2	5.1	4.0	3.3	6.1	5.2	4.1	3.3		28.0
	30.0	5.7	4.8	3.8	3.1	5.6	4.9	3.8	3.2	5.5	5.1	3.9	3.2		30.0
	32.0		4.7	3.7	3.0	5.1	4.8	3.7	3.1	5.0	4.9	3.8	3.1		32.0
	34.0			3.5	2.9		4.6	3.6	3.0		4.6	3.7	3.0		34.0
	36.0				2.8			3.5	2.9		4.1	3.6	2.9		36.0
	38.0				2.7			3.4	2.8			3.5	2.8		38.0
40.0								2.7						40.0	
42.0												2.6		42.0	
Reeves		1	1	1	1	1	1	1	1	1	1	1	1	Reeves	

Note:

Ratings according to EN13000.

Ratings shown in   are determined by the strength of the boom or other structural components.

Lifting capacities may vary depending on hook used or with/without auxiliary sheave.

Please refer rated chart in operator's cabin.

# LIFTING CAPACITIES



## Fixed Jib Lifting Capacities (Without Main Hook Block) (Jib Offset Angle : 30°)

Counterweight: 31.9 t  
Carbody Weight: 14.4 t

Unit: metric ton

Boom length (m)		42.7				45.7				48.8				Boom length (m)	
Jib length (m)		9.1	12.2	15.2	18.3	9.1	12.2	15.2	18.3	9.1	12.2	15.2	18.3	Jib length (m)	
Working radius (m)	16.0	9.5				9.5									16.0
	18.0	9.4	6.7			9.5				9.5					18.0
	20.0	8.9	6.4	5.1		9.1	6.5	5.1		9.2	6.6	5.1			20.0
	22.0	8.4	6.1	4.8	4.0	8.4	6.2	4.9	4.0	8.5	6.3	4.9	4.1		22.0
	24.0	7.6	5.8	4.6	3.8	7.6	5.9	4.7	3.8	7.5	6.0	4.7	3.9		24.0
	26.0	6.7	5.6	4.4	3.6	6.6	5.7	4.5	3.7	6.6	5.8	4.5	3.7		26.0
	28.0	6.0	5.4	4.2	3.4	5.9	5.5	4.3	3.5	5.9	5.6	4.3	3.6		28.0
	30.0	5.3	5.2	4.0	3.3	5.3	5.3	4.1	3.3	5.2	5.4	4.1	3.4		30.0
	32.0	4.8	5.0	3.9	3.2	4.8	4.9	4.0	3.2	4.7	4.9	4.0	3.3		32.0
	34.0	4.4	4.5	3.8	3.1	4.3	4.4	3.9	3.1	4.2	4.4	3.9	3.2		34.0
	36.0	3.9	4.1	3.7	3.0	3.9	4.0	3.7	3.0	3.9	3.9	3.8	3.1		36.0
	38.0		3.7	3.6	2.9	3.5	3.6	3.6	2.9	3.5	3.6	3.7	3.0		38.0
	40.0			3.5	2.8			3.4	2.8			3.2	3.4	2.9	40.0
	42.0				2.7			3.1	2.7			2.9	3.0	2.8	42.0
	44.0				2.6				2.7				2.7	2.7	44.0
	46.0													2.6	46.0
	48.0													2.3	48.0
	Reeves	1	1	1	1	1	1	1	1	1	1	1	1	Reeves	

Boom length (m)		51.8			
Jib length (m)		9.1	12.2	15.2	18.3
Working radius (m)	18.0	9.5			
	20.0	9.3	6.6		
	22.0	8.5	6.4	5.0	
	24.0	7.5	6.1	4.8	3.9
	26.0	6.6	5.9	4.6	3.8
	28.0	5.9	5.7	4.4	3.6
	30.0	5.2	5.4	4.2	3.5
	32.0	4.7	4.8	4.1	3.4
	34.0	4.2	4.3	4.0	3.3
	36.0	3.7	3.8	3.9	3.2
	38.0	3.3	3.5	3.6	3.1
	40.0	3.0	3.2	3.3	3.0
	42.0		2.9	3.0	2.9
44.0		2.6	2.7	2.6	
46.0			2.4	2.4	
48.0				2.2	
50.0				2.0	
	Reeves	1	1	1	1

Note:

Ratings according to EN13000.

Ratings shown in   are determined by the strength of the boom or other structural components.

Lifting capacities may vary depending on hook used or with/without auxiliary sheave.

Please refer rated chart in operator's cabin.



# SUPPLEMENTAL DATA FOR CLAMSHELL RATING CHART

- Operating radius is the horizontal distance from centerline of rotation to a vertical line through the center of gravity of the load.
- Deduct weight of bucket, slings and all other load handling accessories from main boom ratings shown.
- Ratings shown are based on freely suspended loads and make no allowance for such factors as wind effect on lifted load, ground conditions, out-of-level, operating speeds or any other condition that could be detrimental to the safe operation of this equipment. The operator, therefore, has the responsibility to judge the existing conditions and reduce lifted loads and operating speeds accordingly.
- Rated loads do not exceed 66% of minimum tipping loads.
- Ratings are for operation on a firm and level surface, up to 1% gradient.
- At radii and boom lengths where no ratings are shown on chart, operation is not intended nor approved.
- Boom inserts and guy lines must be arranged as shown in the "operator's manual".
- Boom hoist reeving is 12 part line.
- Gantry must be in raised position for all conditions.
- Boom backstops are required for all boom lengths.
- The boom should be erected over the front of the crawlers, not laterally.
- Crawler frames must be fully extended for all crane operations.

## (Clamshell bucket lifting)

- The total load that can be lifted is the value for weight of bucket, slings, and all other load handling accessories deducted from main boom ratings shown.
- The weight of bucket and materials must not exceed rated load.
- Optimum bucket should be required according to material.  $\text{Bucket capacity (m}^3\text{)} \times \text{specified gravity of material (ton/m}^3\text{)} + \text{bucket weight (ton)} = \text{rated load.}$
- Bucket weight must also be decreased according to operating cycle and bucket lowering height.
- Rated loads are determined by stability and boom strength. During simultaneous operations of boom and swing, rapid acceleration or deceleration must be avoided.
- Do not attempt to cast the bucket while swinging or diagonal draw-cutting.

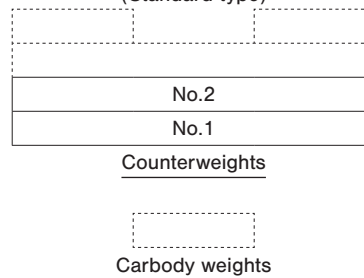
## <Reference Information>

### Main hoist loads

No. of Parts of Line	1
Maximum Loads (kN)	98
Maximum Loads (t)	10.0

### Assembling the counterweight

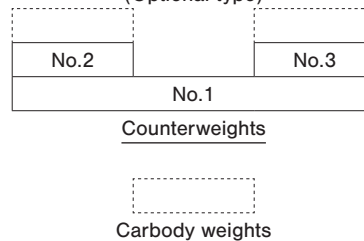
20.5 ton counterweight  
without carbody weight  
(Standard type)



### Assembling the counterweight

(Equipped with self removal device)

19.8 ton counterweight  
without carbody weight  
(Optional type)



- The lifting capacity does not change due to the type of counterweights. (Standard or optional)

Operation of this equipment in excess of rated loads or disregard of instruction voids the warranty.

# LIFTING CAPACITIES



## Clamshell Rating Charts Crane Boom Capacities

Counterweight: 20.5 t  
Without Carbody Weight  
Crawler Fully Extended

Unit: metric ton

Load radius (m) \ Boom length (m)	12.2	15.2	18.3	21.3	24.4				Boom length (m) \ Load radius (m)
5.0	10.0								5.0
6.0	10.0	10.0							6.0
7.0	10.0	10.0	10.0						7.0
8.0	10.0	10.0	10.0	9.5					8.0
9.0	10.0	10.0	10.0	9.5	8.7				9.0
10.0	9.8	9.7	9.6	9.5	8.7				10.0
11.0	9.1	9.0	8.9	8.8	8.7				11.0
12.0		8.3	8.2	8.1	8.0				12.0
13.0		7.7	7.6	7.5	7.4				13.0
14.0		7.1	7.0	6.9	6.8				14.0
15.0			6.5	6.4	6.3				15.0
16.0			6.1	6.0	5.9				16.0
17.0				5.7	5.6				17.0
18.0				5.4	5.3				18.0
19.0				5.2	5.1				19.0
20.0					4.9				20.0
21.0					4.7				21.0
22.0									22.0
23.0									23.0
24.0									24.0
25.0									25.0
26.0									26.0
27.0									27.0
28.0									28.0
29.0									29.0
30.0									30.0
<b>Reeves</b>	1	1	1	1	1				<b>Reeves</b>

Note:  
Please refer rated chart in operator's cabin.

# SUPPLEMENTAL DATA FOR REDUCED WEIGHTS RATING CHART

- Ratings according to EN13000.
- Operating radius is the horizontal distance from centerline of rotation to a vertical line through the center of gravity of the load.
- Deduct weight of hook block (s), slings and all other load handling accessories from main boom ratings shown.
- Ratings shown are based on freely suspended loads and make no allowance for such factors as wind effect on lifted load, ground conditions, out-of-level, operating speeds or any other condition that could be detrimental to the safe operation of this equipment. The operator, therefore, has the responsibility to judge the existing conditions and reduce lifted loads and operating speeds accordingly.
- Ratings are for operation on a firm and level surface, up to 1% gradient.
- At radii and boom lengths where no ratings are shown on chart, operation is not intended nor approved.
- Boom inserts and guy lines must be arranged as shown in the "operator's manual".
- Boom hoist reeving is 12 part line.
- Gantry must be in raised position for all conditions.
- Boom backstops are required for all boom lengths.
- The boom should be erected over the front of the crawlers, not laterally.
- Ratings inside of boxes  are limited by strength of materials.
- The minimum rated load is 1.4 (ton).
- Crawler frames must be fully extended for all crane operations.

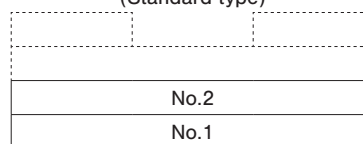
## (Crane boom lifting)

- The total load that can be lifted is the value for weight of hook block, slings, and all other load handling accessories deducted from main boom ratings shown.

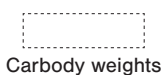
Counterweight	Carbody weight	Boom length	
		Without aux.	With aux.
20.5 ton	Without	12.2 m to 57.9 m	12.2 m to 54.9 m
19.8 ton	Without	12.2 m to 57.9 m	12.2 m to 54.9 m

## Assembling the counterweight

20.5 ton counterweight  
without carbody weight  
(Standard type)



Counterweights

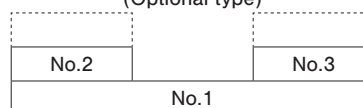


Carbody weights

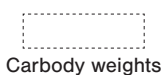
## Assembling the counterweight

(Equipped with self removal device)

19.8 ton counterweight  
without carbody weight  
(Optional type)



Counterweights



Carbody weights

- The lifting capacity does not change due to the type of counterweights (standard or optional).

## <Reference Information>

### Main hoist loads

No. of Parts of Line	1	2	3	4	5
Maximum Loads (kN)	112	224	335	447	559
Maximum Loads (t)	11.4	22.8	34.2	45.6	57.0

No. of Parts of Line	6	7	8
Maximum Loads (kN)	671	779	883
Maximum Loads (t)	68.4	79.4	90.0

### Auxiliary hoist loads

No. of Parts of Line	1
Maximum Loads (kN)	108
Maximum Loads (t)	11.0

Weight of hook block					
Hook Block	90 t	70 t	50 t	35 t	Ball Hook
Weight (t)	1.3	0.9	0.85	0.7	0.3

Operation of this equipment in excess of rated loads or disregard of instruction voids the warranty.

# LIFTING CAPACITIES



## Reduced Weights Rating Charts Crane Boom Lifting Capacities

Counterweight: 20.5 t  
Without Carbody Weight  
Crawler Fully Extended

Unit: metric ton

Load radius (m) \ Boom length (m)	12.2	15.2	18.3	21.3	24.4	27.4	30.5	33.5	36.6	39.6					Boom length (m) \ Load radius (m)
3.9	81.2	77.3	71.4												3.9
4.0	80.2	74.6	69.0	4.3m/59.0											4.0
4.5	67.1	63.2	59.1	55.8	4.7m/49.9										4.5
5.0	54.8	54.8	51.6	49.0	46.4	5.1m/42.2									5.0
5.5	46.2	46.2	45.8	43.7	41.6	39.7	5.6m/37.1								5.5
6.0	40.0	39.9	39.7	39.4	37.6	36.0	34.5	33.1	6.4m/29.8	6.8m/26.9					6.0
7.0	31.3	31.2	31.1	30.9	30.6	30.3	29.2	28.2	27.1	26.2					7.0
8.0	25.7	25.6	25.4	25.4	25.4	25.3	25.2	24.4	23.6	22.8					8.0
9.0	21.7	21.6	21.4	21.4	21.4	21.4	21.3	21.3	20.8	20.1					9.0
10.0	18.8	18.6	18.5	18.5	18.5	18.5	18.4	18.3	18.2	18.0					10.0
12.0	11.8m/15.0	14.5	14.4	14.4	14.4	14.3	14.2	14.2	14.0	13.9					12.0
14.0		11.9	11.7	11.7	11.7	11.6	11.5	11.4	11.3	11.2					14.0
16.0		14.4m/11.5	9.8	9.8	9.8	9.7	9.6	9.5	9.4	9.3					16.0
18.0			17.0m/9.0	8.4	8.3	8.3	8.1	8.1	7.9	7.8					18.0
20.0				19.6m/7.6	7.2	7.1	7.0	6.9	6.8	6.7					20.0
22.0					6.4	6.3	6.1	6.1	5.9	5.8					22.0
24.0					22.3m/6.3	5.6	5.4	5.3	5.2	5.1					24.0
26.0						24.9m/5.3	4.8	4.8	4.6	4.5					26.0
28.0							27.6m/4.4	4.3	4.1	4.0					28.0
30.0								3.8	3.7	3.6					30.0
32.0								30.2m/3.8	3.3	3.2					32.0
34.0									32.9m/3.2	2.9					34.0
36.0										35.5m/2.7					36.0
38.0															38.0
40.0															40.0
44.0															44.0
Reeves	8	8	8	6	5	4	4	4	4	4					Reeves

Load radius (m) \ Boom length (m)	42.7	45.7	48.8	51.8	54.9	57.9									Boom length (m) \ Load radius (m)
4.5															4.5
5.0															5.0
5.5															5.5
6.0															6.0
7.0	7.3m/24.1	7.7m/22.2													7.0
8.0	22.0	21.4	8.1m/19.8	8.5m/17.2											8.0
9.0	19.5	18.9	18.3	16.6	14.5	9.4m/12.5									9.0
10.0	17.4	16.9	16.4	15.5	13.5	11.9									10.0
12.0	13.8	13.7	13.5	13.1	11.9	10.4									12.0
14.0	11.1	11.1	11.1	11.0	10.6	9.3									14.0
16.0	9.1	9.1	9.1	9.0	8.9	8.3									16.0
18.0	7.7	7.7	7.7	7.6	7.5	7.4									18.0
20.0	6.6	6.6	6.5	6.4	6.3	6.3									20.0
22.0	5.7	5.7	5.6	5.5	5.4	5.4									22.0
24.0	4.9	4.9	4.9	4.8	4.7	4.6									24.0
26.0	4.3	4.3	4.3	4.2	4.1	4.0									26.0
28.0	3.8	3.8	3.8	3.7	3.6	3.5									28.0
30.0	3.4	3.4	3.4	3.3	3.1	3.0									30.0
32.0	3.1	3.1	3.0	2.9	2.7	2.6									32.0
34.0	2.7	2.7	2.6	2.5	2.3	2.3									34.0
36.0	2.4	2.4	2.3	2.2	2.0	1.9									36.0
38.0	2.1	2.1	2.0	1.9	1.7	1.7									38.0
40.0	38.1m/2.1	1.9	1.8	1.6	1.5	1.4									40.0
44.0		40.8m/1.8	43.4m/1.4												44.0
48.0															48.0
52.0															52.0
Reeves	4	2	2	2	2	2									Reeves

Ratings according to EN13000.

Ratings shown in   are determined by the strength of the boom or other structural components.

Lifting capacities may vary depending on hook used or with/without auxiliary sheave.

Please refer rated chart in operator's cabin.

# SUPPLEMENTAL DATA FOR BARGE RATING CHART

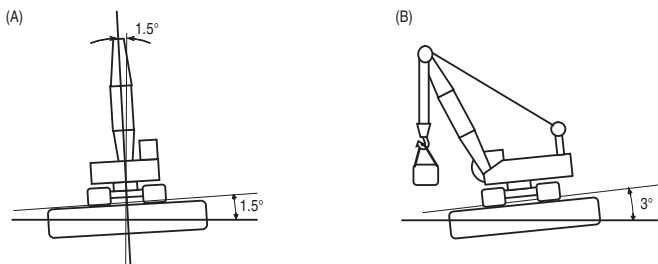
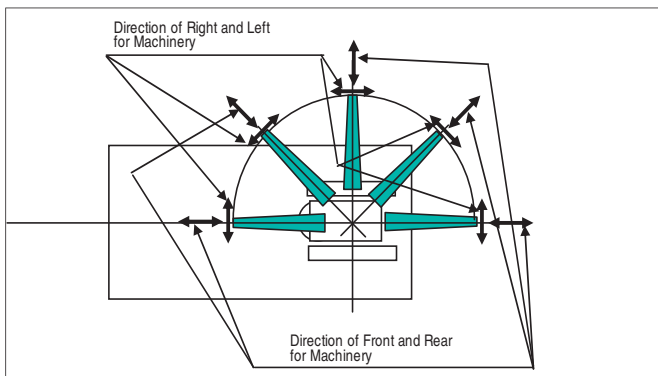
- Operating radius is the horizontal distance from centerline of rotation to a vertical line through the center of gravity of the load.
- Deduct weight of hook block (s), slings and all other load handling accessories from main boom ratings shown.
- Condition of barge stability this rating chart were determined under the condition below. The stability of barge shall meet below condition. During operation the machinery static inclination against horizontal level.

(A) Both sides (right & left) of machine

Maximum inclination shall be within 1.5 degrees

(B) Front & backward of machine

Maximum inclination shall be within 3.0 degrees



- Working area shall be inshore and smooth water.
- Applicable regulations for structure Japanese construction codes for mobile crane
  - \* Regulation of class of shipping (abs, lloyd, bv, nk, etc) are not adapted.
- At radii and boom lengths where no ratings are shown on chart, operation is not intended nor approved.
- Boom inserts and guy lines must be arranged as shown in the "operator's manual".
- Boom hoist reeving is 12 part line.
- Gantry must be in raised position for all conditions.
- Boom backstops are required for all boom lengths.
- The boom should be erected over the front of the crawlers, not laterally.
- Ratings inside of boxes  are limited by strength of materials.
- The minimum rated load is 1.4 (ton).
- Crawler frames must be fully extended for all crane operations.
- The machinery should be fastened to the deck of the barge to prevent tip over and sliding.
- Towing area
  - Towing area shall be within coastal area and quiet wave condition. Offshore and open sea is not considered for this machinery. Depend on the height of wave, counterweight shall be reduced during towing.

## (Crane boom lifting)

- The total load that can be lifted is the value for weight of hook block, slings, and all other load handling accessories deducted from main boom ratings shown.

## <Reference Information>

### Main hoist loads

No. of Parts of Line	1	2	3	4	5
Maximum Loads (kN)	112	224	335	447	490
Maximum Loads (t)	11.4	22.8	34.2	45.6	50.0

### Auxiliary hoist loads

No. of Parts of Line	1
Maximum Loads (kN)	108
Maximum Loads (t)	11.0

Weight of Hook Block					
Hook Block	90 t	70 t	50 t	35 t	11 t Ball Hook
Weight (t)	1.3	0.9	0.85	0.7	0.3

Operation of this equipment in excess of rated loads or disregard of instruction voids the warranty.

## Assembling the counterweight

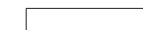
31.9 ton counterweight

14.4 ton carbody weight

(Standard type)

No.4		No.5
No.3		
No.2		
No.1		

Counterweights



Carbody weights

## Assembling the counterweight

(Equipped with self removal device)

31.3 ton counterweight

14.4 ton carbody weight

(Optional type)

No.4		No.5
No.2		No.3
No.1		


Counterweights



Carbody weights

- The lifting capacity does not change due to the type of counterweights (standard or optional).

# LIFTING CAPACITIES

 <b>Barge Rating Chart</b> <b>Crane Boom Lifting Capacities</b>										Counterweight: 31.9 t Carbody Weight: 14.4 t Crawler Fully Extended Unit: metric ton	
Load radius (m)	Boom length (m)	15.2	18.3	21.3	24.4	27.4	30.5	33.5	36.6	Boom length (m)	Load radius (m)
4.5	4.6m/50.0										4.5
5.0	44.8										5.0
5.5	37.0	40.4									5.5
6.0	31.5	36.9	6.2m/35.5	6.9m/31.4							6.0
7.0	26.7	31.4	31.2	30.9	7.5m/28.1						7.0
8.0	23.0	26.6	26.5	26.4	26.3	8.2m/24.9	8.9m/22.2				8.0
9.0	20.1	22.9	22.8	22.7	22.6	22.5	22.1	9.6m/19.4			9.0
10.0	15.8	20.3	20.2	20.1	20.0	19.9	19.8	19.1			10.0
12.0	11.9	16.1	16.0	15.9	15.8	15.7	15.6	15.5			12.0
14.0	14.4m/10.8	12.6	12.8	12.7	12.6	12.5	12.4	12.3			14.0
16.0		10.4	10.8	10.8	10.7	10.6	10.5	10.4			16.0
18.0		17.0m/8.5	8.7	9.0	9.2	9.1	9.0	8.9			18.0
20.0			19.6m/7.4	7.7	8.0	8.1	8.0	7.9			20.0
22.0				6.5	6.9	7.0	7.0	6.9			22.0
24.0				22.3m/6.3	5.9	6.1	6.2	6.1			24.0
26.0					24.9m/5.5	5.2	5.4	5.3			26.0
28.0						27.6m/4.6	4.6	4.6			28.0
30.0							4.0	4.0			30.0
32.0							30.2m/3.9	3.5			32.0
34.0								32.9m/3.2			34.0
<b>Reeves</b>		5	4	4	3	3	3	2	2		<b>Reeves</b>

**Note:**

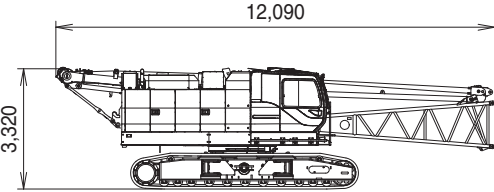
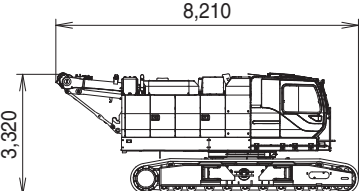
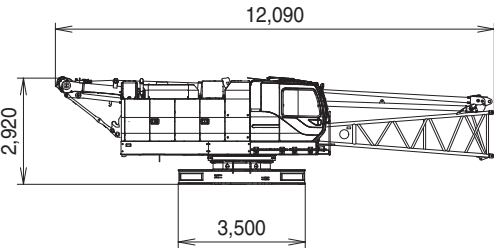
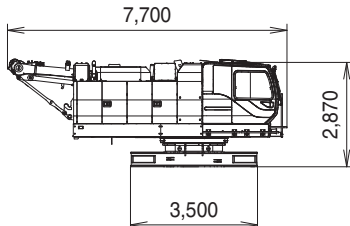
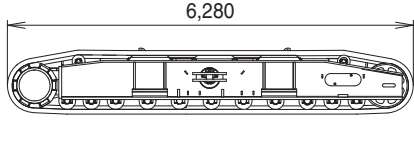
Ratings according to Japanese construction codes for mobile cranes and Japanese safety ordinance on cranes, etc.

Ratings shown in   are determined by the strength of the boom or other structural components.

Lifting capacities may vary depending on hook used or with/without auxiliary sheave.

Please refer rated chart in operator's cabin.

# TRANSPORTATION PLAN

Name	Dimension	Weight (kg)
<b>Base Machine</b> • Boom base • Gantry • Crawler • Wire rope (Front / rear / boom hoist)		41,230
<b>Base Machine</b> • Gantry • Crawler • Wire rope (Front / rear / boom hoist)		39,170
<b>Base Machine</b> • Boom base • Gantry • Wire rope (Front / rear / boom hoist) • Without crawler • Without side steps		26,870
<b>Base Machine</b> • Gantry • Wire rope (Front / rear / boom hoist) • Without crawler • Without side steps		24,810
Crawler		7,180

\*1 With the side step on cabin side : 3,170  
 With the side steps on the both sides : 3,340



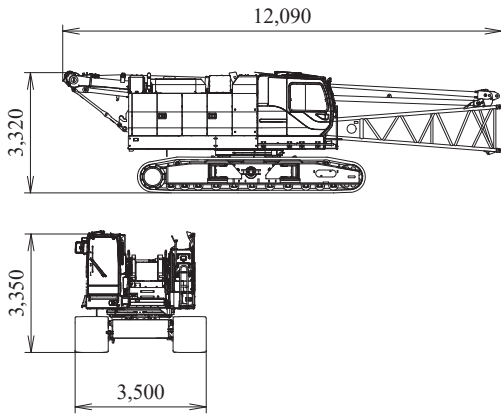




# PARTS AND ATTACHMENTS

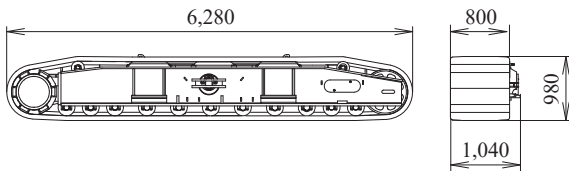
## Base Machine

Boom base, Gantry, Crawler, Wire rope (Front/rear/boom hoist)  
Weight: 41,230 kg Width: 3,500 mm



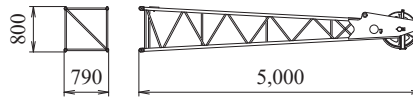
## Crawler

Weight: 7,180 kg



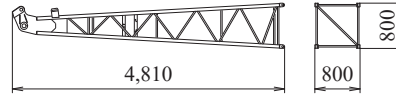
## Jib Tip

Weight: 280 kg



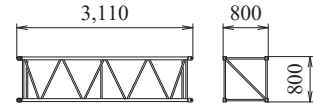
## Jib Base

Weight: 200 kg



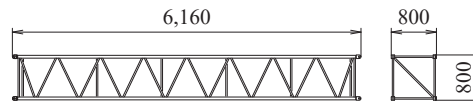
## 3.0 m Jib Insert

Weight: 100 kg



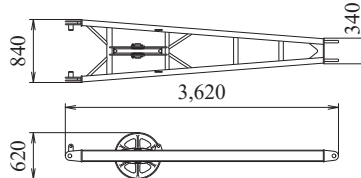
## 6.1 m Jib Insert

Weight: 180 kg



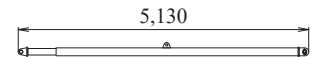
## Strut

Weight: 250 kg



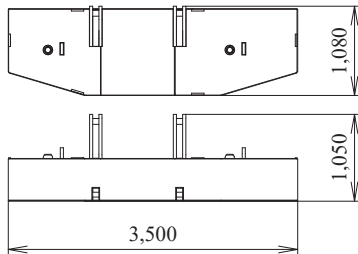
## Crane Backstop

Weight: 270 kg (1 piece)



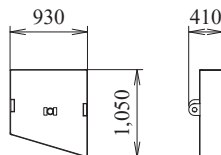
## Counterweight No.1

Weight: 10,540 kg



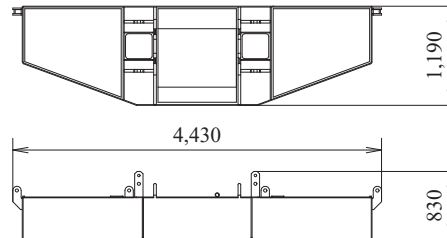
## Counterweight No.4 (L)

Weight: 1,280 kg



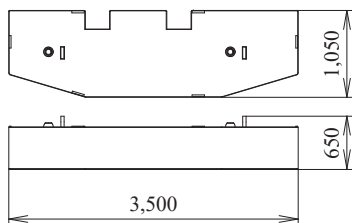
## Counterweight (1) (Option)

Weight: 8,310 kg



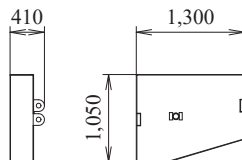
## Counterweight No.2

Weight: 9,930 kg



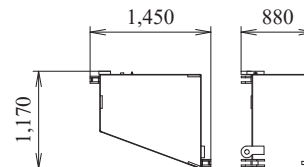
## Counterweight No.4 (R)

Weight: 1,900 kg



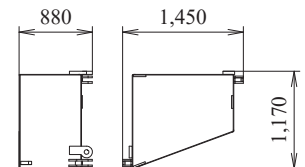
## Counterweight (L) (2) (4) (Option)

Weight: 5,750 kg



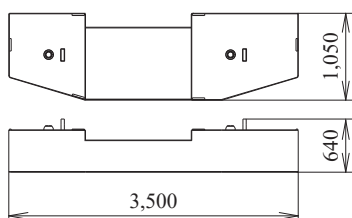
## Counterweight (R) (3) (5) (Option)

Weight: 5,750 kg



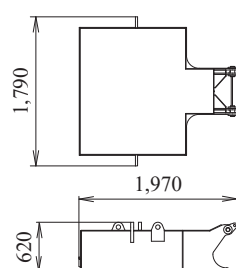
## Counterweight No.3

Weight: 8,250 kg



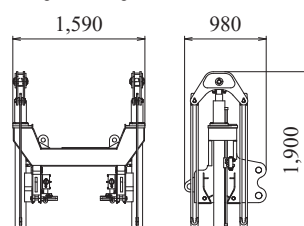
## Carbody Weight

Weight: 7,200 kg



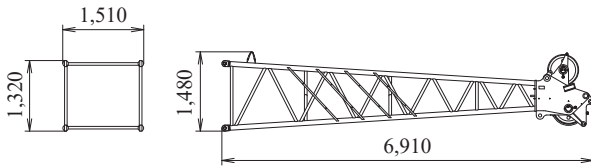
## Self removal unit (Option)

Weight: 870 kg

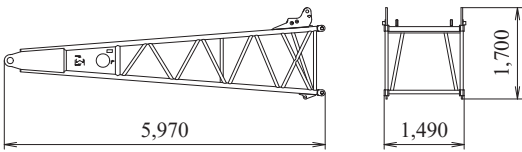


**Boom Tip**

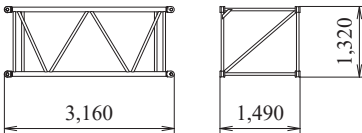
Weight: 1,220 kg

**Boom Base**

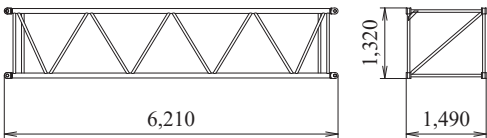
Weight: 1,120 kg

**3.0 m Boom Insert**

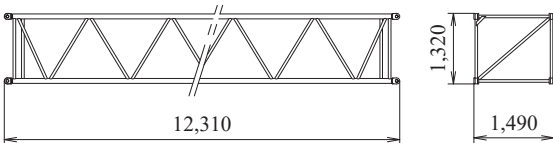
Weight: 300 kg

**6.1 m Boom Insert**

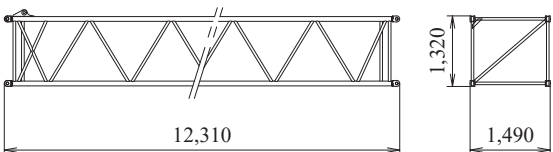
Weight: 520 kg

**12.2 m Insert Boom**

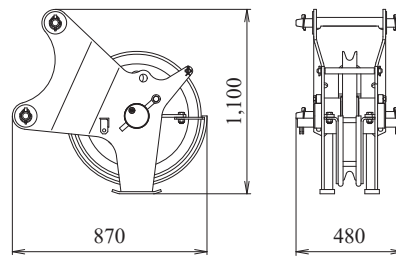
Weight: 950 kg

**12.2 m Boom Insert (with lug)**

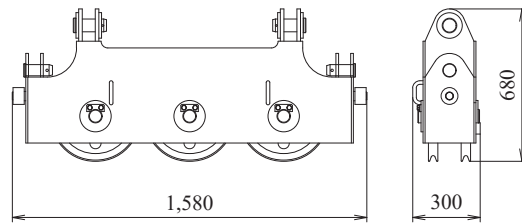
Weight: 970 kg

**Auxiliary Sheave**

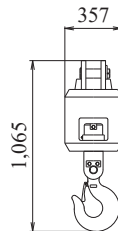
Weight: 195 kg

**Upper Spreader**

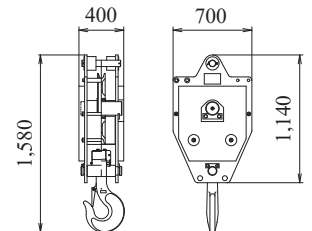
Weight: 280 kg

**Ball Hook**

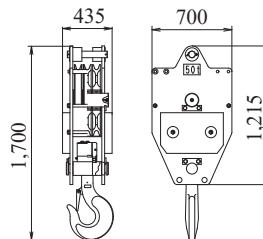
Weight: 300 kg

**35 t Hook**

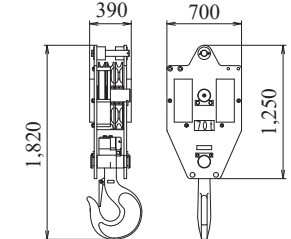
Weight: 700 kg

**50 t Hook**

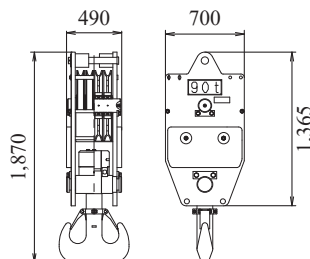
Weight: 850 kg

**70 t Hook**

Weight: 900 kg

**90 t Hook**

Weight: 1,300 kg



Note: This catalog may contain photographs of machines with specifications, attachments and optional equipment not certified for operation in your country. Please consult KOBELCO for those items you may require. Due to our policy of continual product improvements all designs and specifications are subject to change without advance notice.

Copyright by KOBELCO CONSTRUCTION MACHINERY CO., LTD. No part of this catalog may be reproduced in any manner without notice.

## **KOBELCO CONSTRUCTION MACHINERY CO., LTD.**

Inquiries To:

5-15, Kitashinagawa 5-chome, Shinagawa-ku, Tokyo 141-8626 JAPAN

Tel: +81-3-5789-2121 Fax: +81-3-5789-3372

URL: <https://www.kobelcocm-global.com>