

## What to prepare

- Print-out paper (Special paper that is about as thick as a postcard is best. Sample shown is printed on glossy photo paper.)
- Cutter knife / ruler
- Mat that can be used with a cutter
- Ballpoint pen that can no longer write, or stylus
- Paper adhesive (or glue)
- Aluminum foil, 28 cm width 110 cm (for balancing weight) or 11 1-yen coins
- Let's get creative with tools that you can use easily on your own, like tweezers, a bamboo spatula, and bamboo skewers.

## Before you start

Paper crafting is not too difficult if you follow the instructions.

However, it seems that a lot of people give up halfway upon finding that it surprisingly takes a lot of time when they thought it can be taken up easily and mastered quickly.

In most cases, it is not possible to make everything in one day.

First of all, look at the illustrations carefully until the very end to get a rough idea of the overall flow.

Then start by completing each part one at a time. So, it will be fun once you can establish a goal by trying to see how much time it takes for completion, depending on how much time is taken to complete one quarter of the overall assembly, and so on. Adults who are fast can probably assemble each part in about 2 hours.

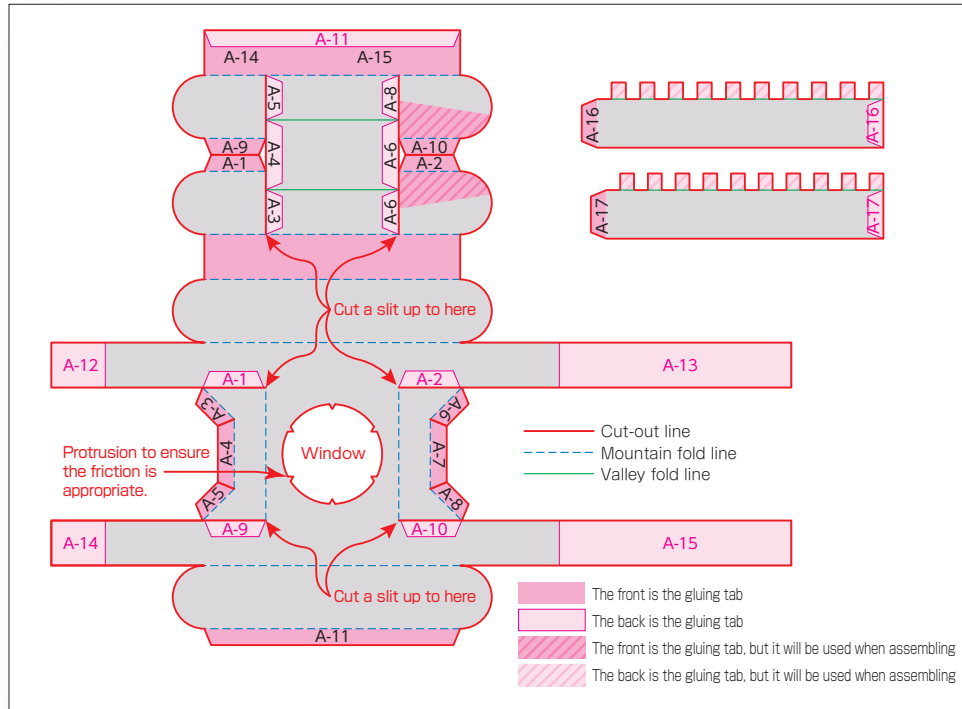
Since each section is divided into 4 parts, each section can therefore be completed in a day. However, when it comes to assembling, it is normal to do it on another day. If you are impatient, you may make a mistake, resulting in even more time being lost.

It is said that elementary school students can concentrate for about 3 hours a day.

It is probably also a good idea to start by making one part per day.



- When using a utility knife or bamboo skewer, be careful not to cut your hands or feet!
- When using a utility knife or bamboo skewer, be careful not to scratch the desk or floor!
- If the instructions are hard to understand, ask an adult for help.



Before cutting, make out the folding shape properly with a stylus and a ruler, etc.

After cutting, make creases along the folding shape.

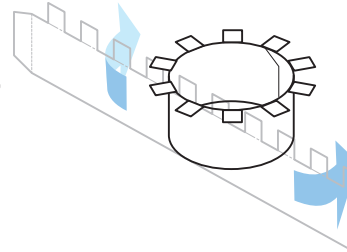
Attach it fairly securely until a rough shape is formed.

Instead of gluing right away, if you imagine the pasting procedure starting from the thin and narrow sections first, the number of mistakes you make will decrease.

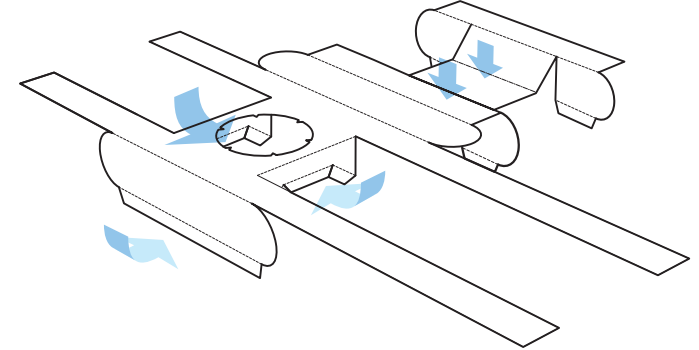
- ① Prepare the part that connect the upper structure to the undercarriage too.

Roll it into a cylinder and paste it together accurately so that the white margin does not stick out.

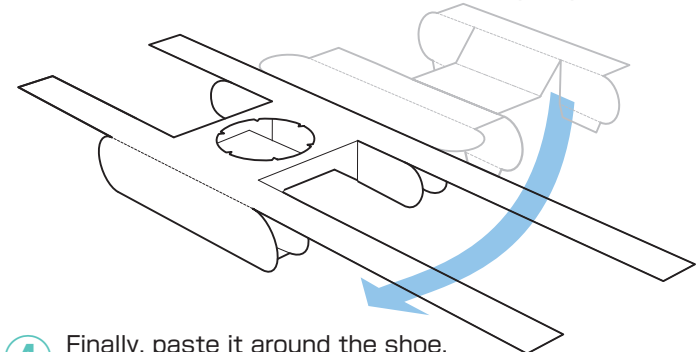
The square section will be attached to the bottom of the upper structure, so open it outwards and fold it.



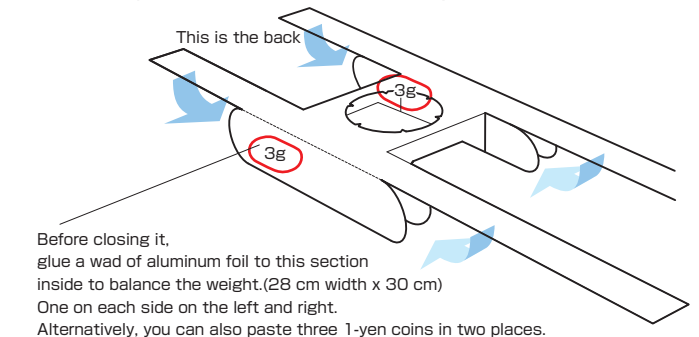
- ② Make temporary creases in the entire part, while paying attention to whether the folds are mountain or valley folds.



- ③ Gluing will be easier if you paste in sequence starting from the narrow sections and progressing to the wider sections. Paste in the order of the numbers of the gluing tabs.



- ④ Finally, paste it around the shoe. Since it was made with a little extra length, overlap it so that no white background is visible.







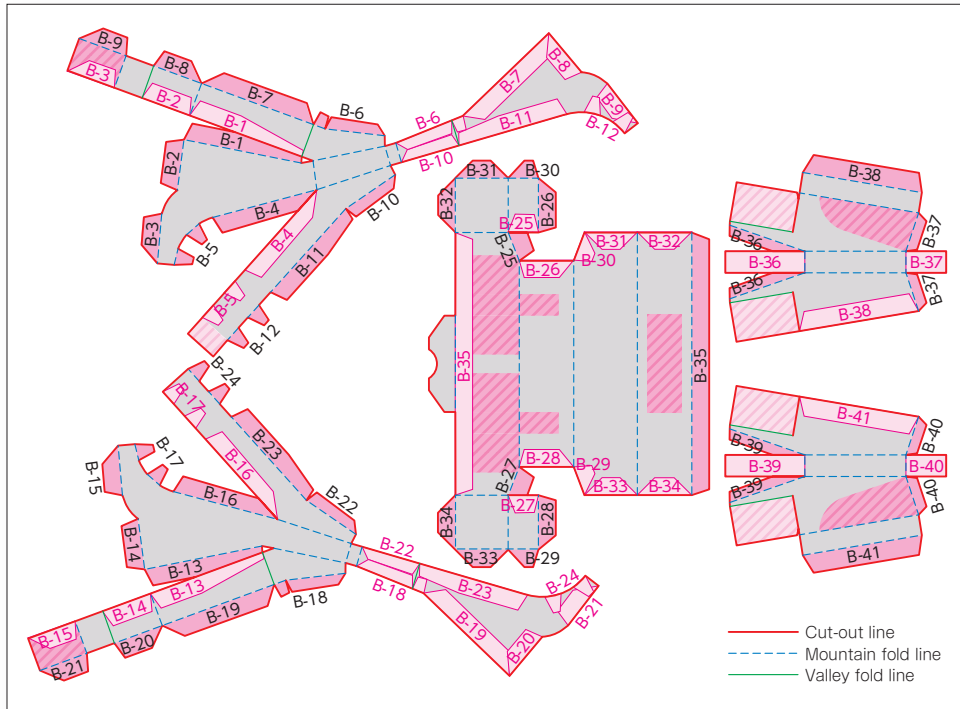
Before closing it, glue a wad of aluminum foil to this section inside to balance the weight.(28 cm width x 30 cm)  
One on each side on the left and right.  
Alternatively, you can also paste three 1-yen coins in two places.

# KOBELCO SK 135SRD

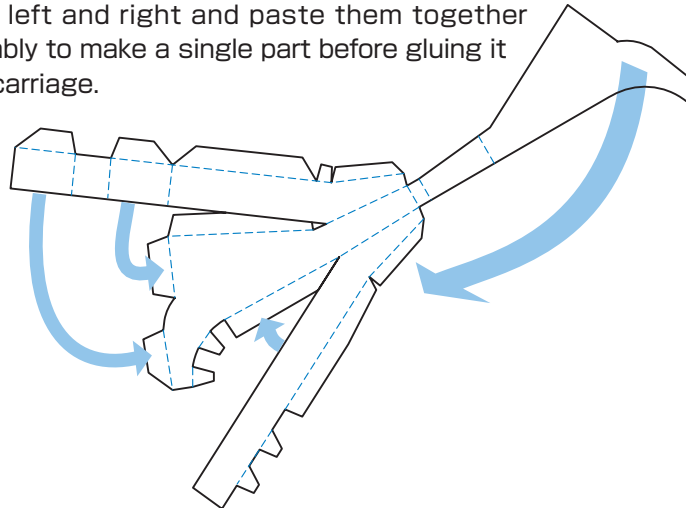
## Diagram-② Clamp arm

- Print-out paper (Special paper that is about as thick as a postcard is best. Sample shown is printed on glossy photo paper.)
- Cutter knife / ruler
- Mat that can be used with a cutter
- Ballpoint pen that can no longer write, or stylus
- Paper adhesive (or glue)
- Aluminum foil, 28 cm width 110 cm (for balancing weight) or 11 1-yen coins
- Let's get creative with tools that you can use easily on your own, like tweezers, a bamboo spatula, and bamboo skewers.

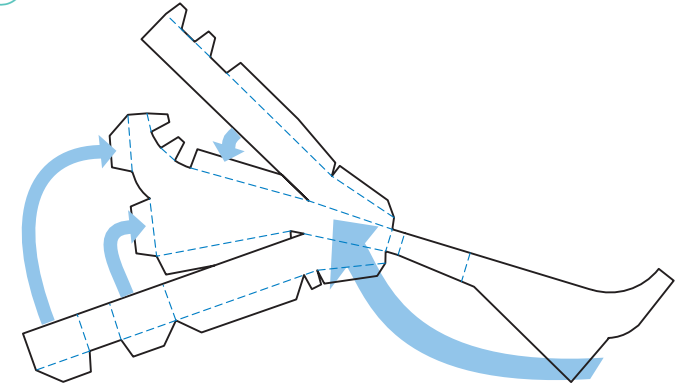
-  The front is the gluing tab
-  The back is the gluing tab
-  The front is the gluing tab, but it will be used when assembling
-  The back is the gluing tab, but it will be used when assembling



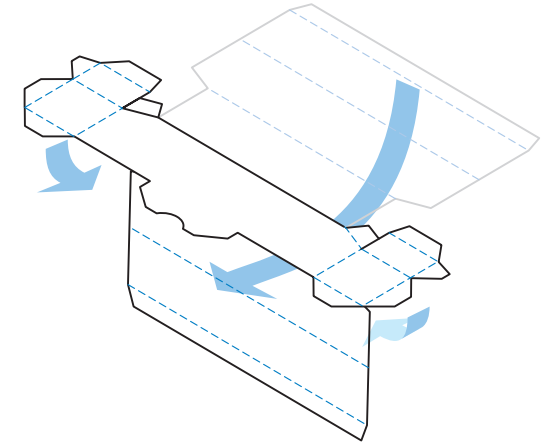
- ① Since the shape of the clamp arm is complicated, make symmetrical parts on the left and right and paste them together during assembly to make a single part before gluing it to the undercarriage.



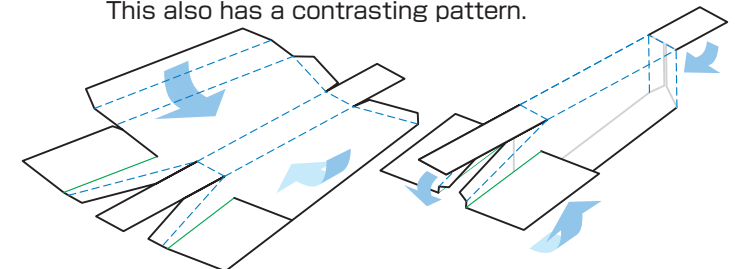
- ② Make the other contrasting clamp arm as shown on the left.



- ③ The shape of the section supporting the arm is close to a relatively simple rectangle.



- ④ This section is to be attached to the undercarriage. Fold the pasted section up with a valley fold. This also has a contrasting pattern.



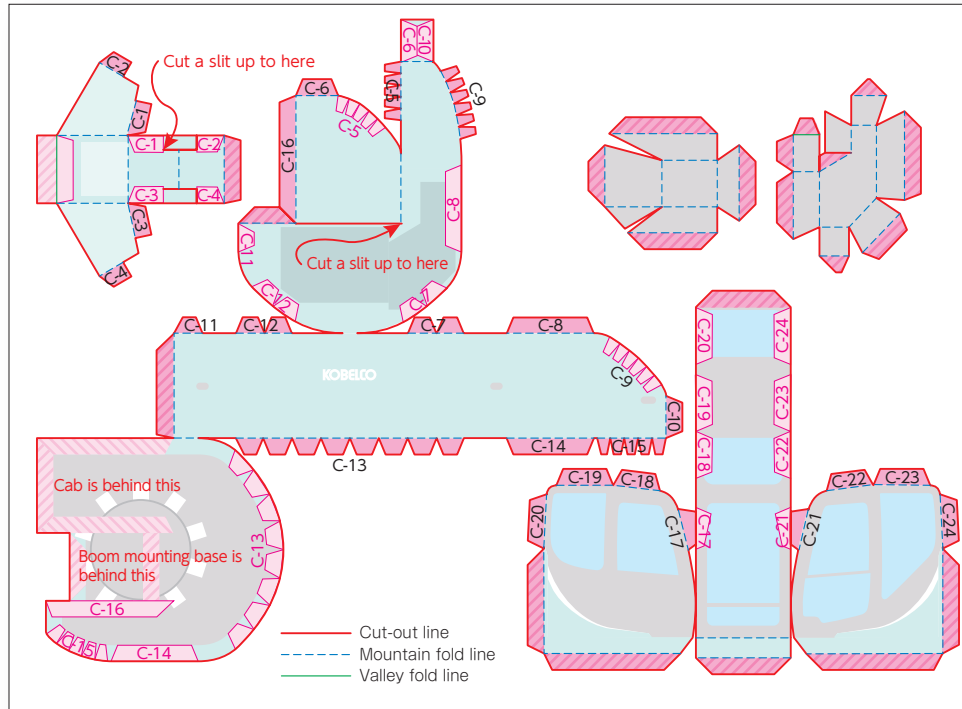
- When using a utility knife or bamboo skewer, be careful not to cut your hands or feet!
- When using a utility knife or bamboo skewer, be careful not to scratch the desk or floor!
- If the instructions are hard to understand, ask an adult for help.

# KOBELCO SK 135SRD

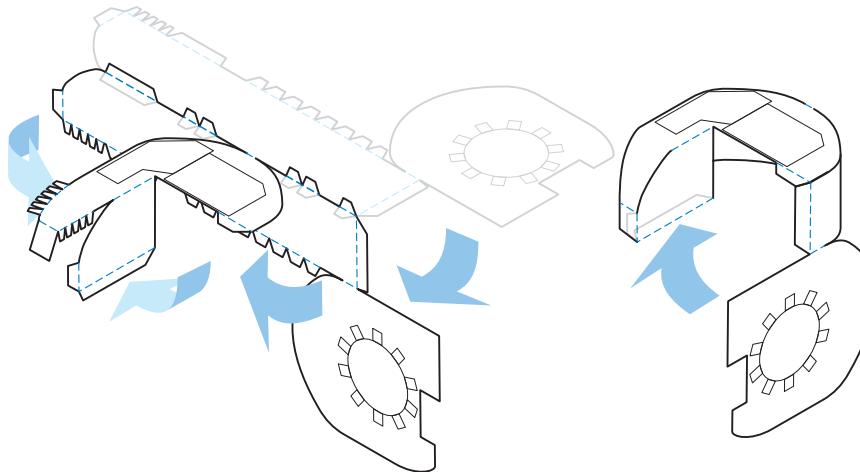
## Diagram-③ Upper structure

- Print-out paper (Special paper that is about as thick as a postcard is best. Sample shown is printed on glossy photo paper.)
- Cutter knife / ruler
- Mat that can be used with a cutter
- Ballpoint pen that can no longer write, or stylus
- Paper adhesive (or glue)
- Aluminum foil, 28 cm width 110 cm (for balancing weight) or 11 1-yen coins
- Let's get creative with tools that you can use easily on your own, like tweezers, a bamboo spatula, and bamboo skewers.

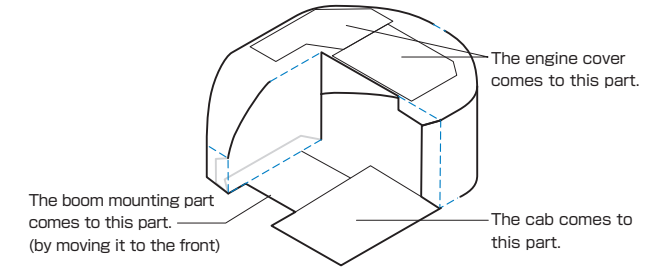
- The front is the gluing tab
- The back is the gluing tab
- The front is the gluing tab, but it will be used when assembling
- The back is the gluing tab, but it will be used when assembling



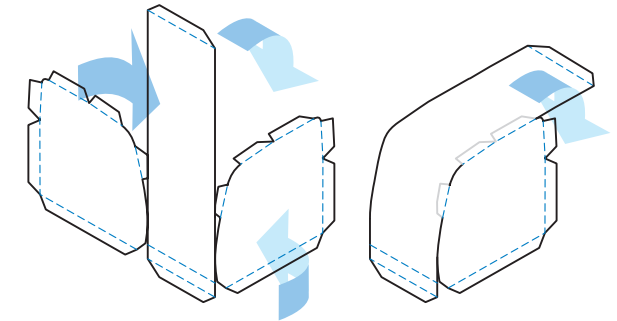
- ① All the folds of the upper structure are mountain folds in the folding shape. (Some parts of the boom mounting base and engine cover are valley folds.)



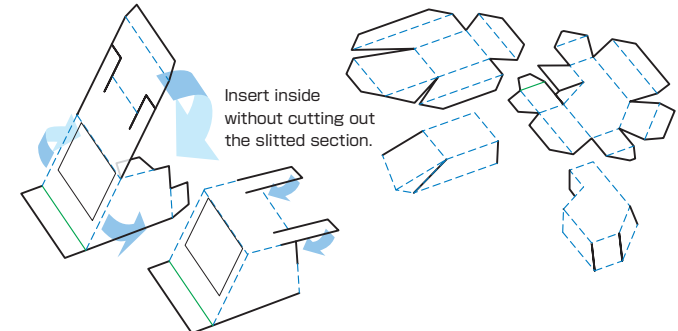
- ② Once a rough shape is visible, starting gluing from the fine areas of the fine parts first so as to achieve a beautiful finish without any deviations.



- ③ Create the cab. The front and roof sections have curved surfaces. Prepare a variety of axes according to the radius and press them against a soft object to make a curve.



- ④ Mounting part of boom and insertion part of cylinder. Both are also easy to attach with an additional two engine covers.



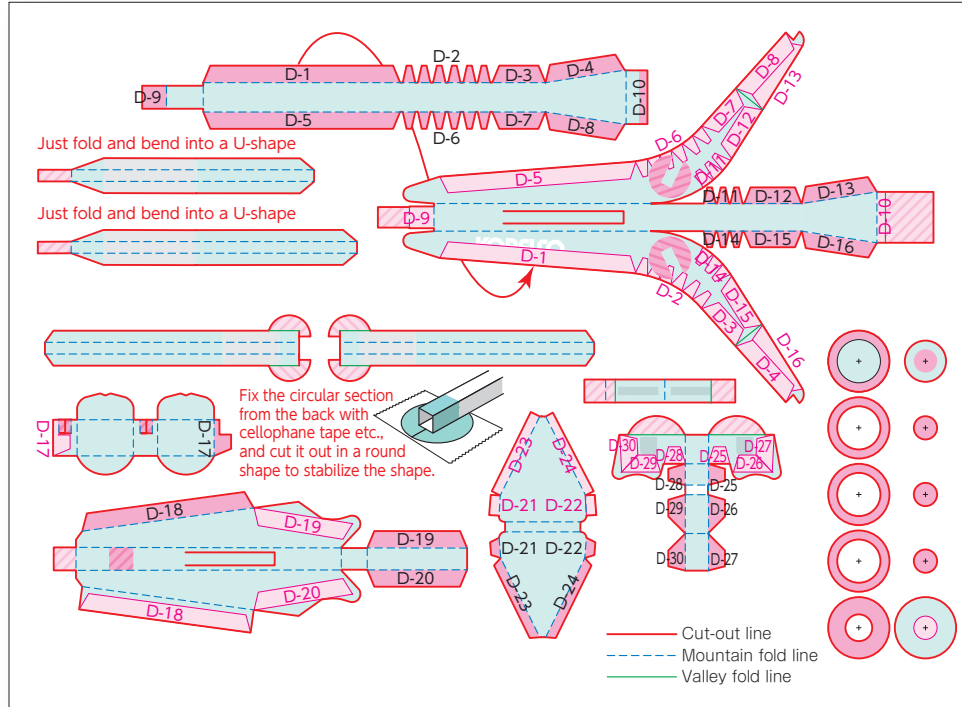
- When using a utility knife or bamboo skewer, be careful not to cut your hands or feet!
- When using a utility knife or bamboo skewer, be careful not to scratch the desk or floor!
- If the instructions are hard to understand, ask an adult for help.

# KOBELCO SK 135SRD L

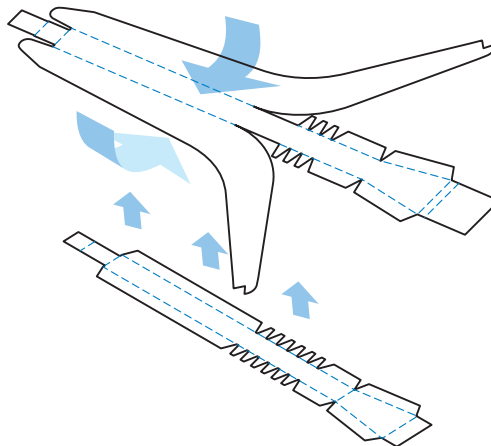
## Diagram-④ Boom/arm/attachment

- Print-out paper (Special paper that is about as thick as a postcard is best. Sample shown is printed on glossy photo paper.)
- Cutter knife / ruler
- Mat that can be used with a cutter
- Ballpoint pen that can no longer write, or stylus
- Paper adhesive (or glue)
- Aluminum foil, 28 cm width 110 cm (for balancing weight) or 11 1-yen coins
- Let's get creative with tools that you can use easily on your own, like tweezers, a bamboo spatula, and bamboo skewers.

- The front is the gluing tab
- The back is the gluing tab
- The front is the gluing tab, but it will be used when assembling
- The back is the gluing tab, but it will be used when assembling

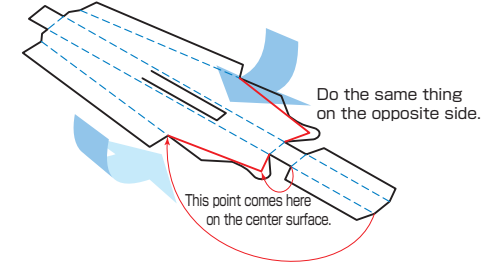


- ① Create a boom. The three sides form a single part, but the bottom is pasted separately.



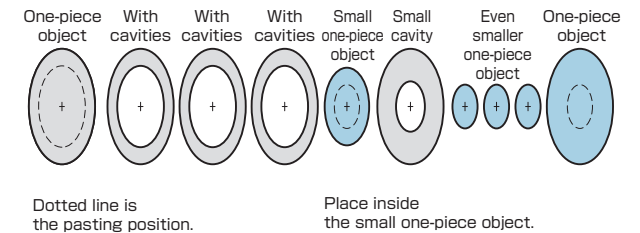
- When using a utility knife or bamboo skewer, be careful not to cut your hands or feet!
- When using a utility knife or bamboo skewer, be careful not to scratch the desk or floor!
- If the instructions are hard to understand, ask an adult for help.

- ② The four sides of the arm are connected to a single sheet of paper.



- ③ Other than these, simply fold the cylinder-related section into 3 parts vertically. Since it is thin, it is necessary to insert the folding shape properly.

- ④ The final difficult task is making where the attachment rotates. As long as the circles are pasted in order correctly, it will be alright. Make sure that you do not mix up the part with the hole and the one indicating the pasting position.



Paste the gray cylinders together.  
 Paste the blue cylinders together.  
 The gray and blue parts rotate as they are not connected.  
 The circle inserted earlier cannot go through as it is bigger than the small gray cavity.  
 Paste it to the attachment after confirming that it can be rotated.  
 If you can do it successfully the first time, that's very good.  
 It's best to work patiently.

## Diagram-⑤ Overall assembly

